

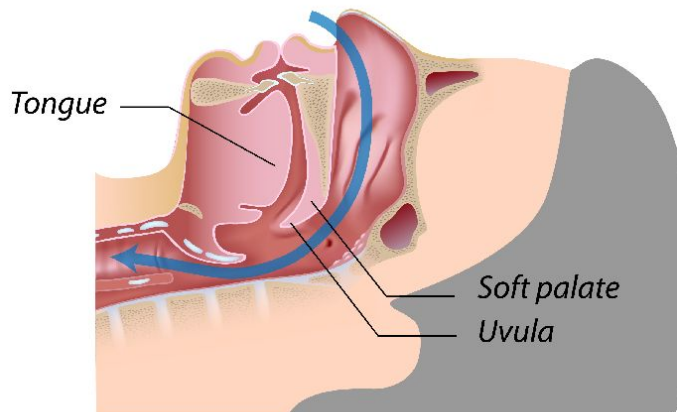




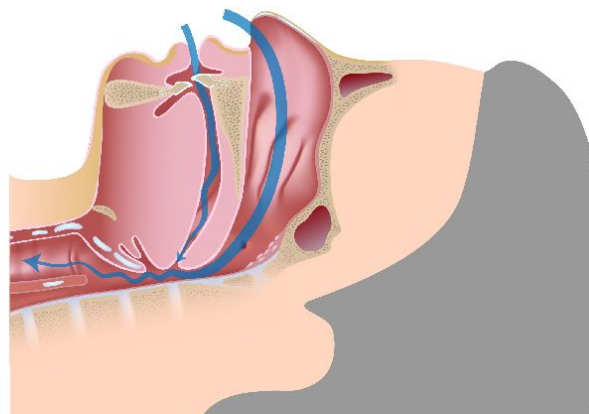




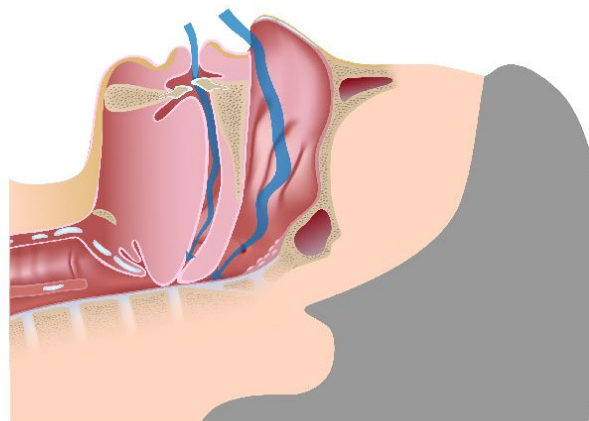
Normal breathing



Snoring - Partial obstruction of the airway



OSA - Complete obstruction of the airway





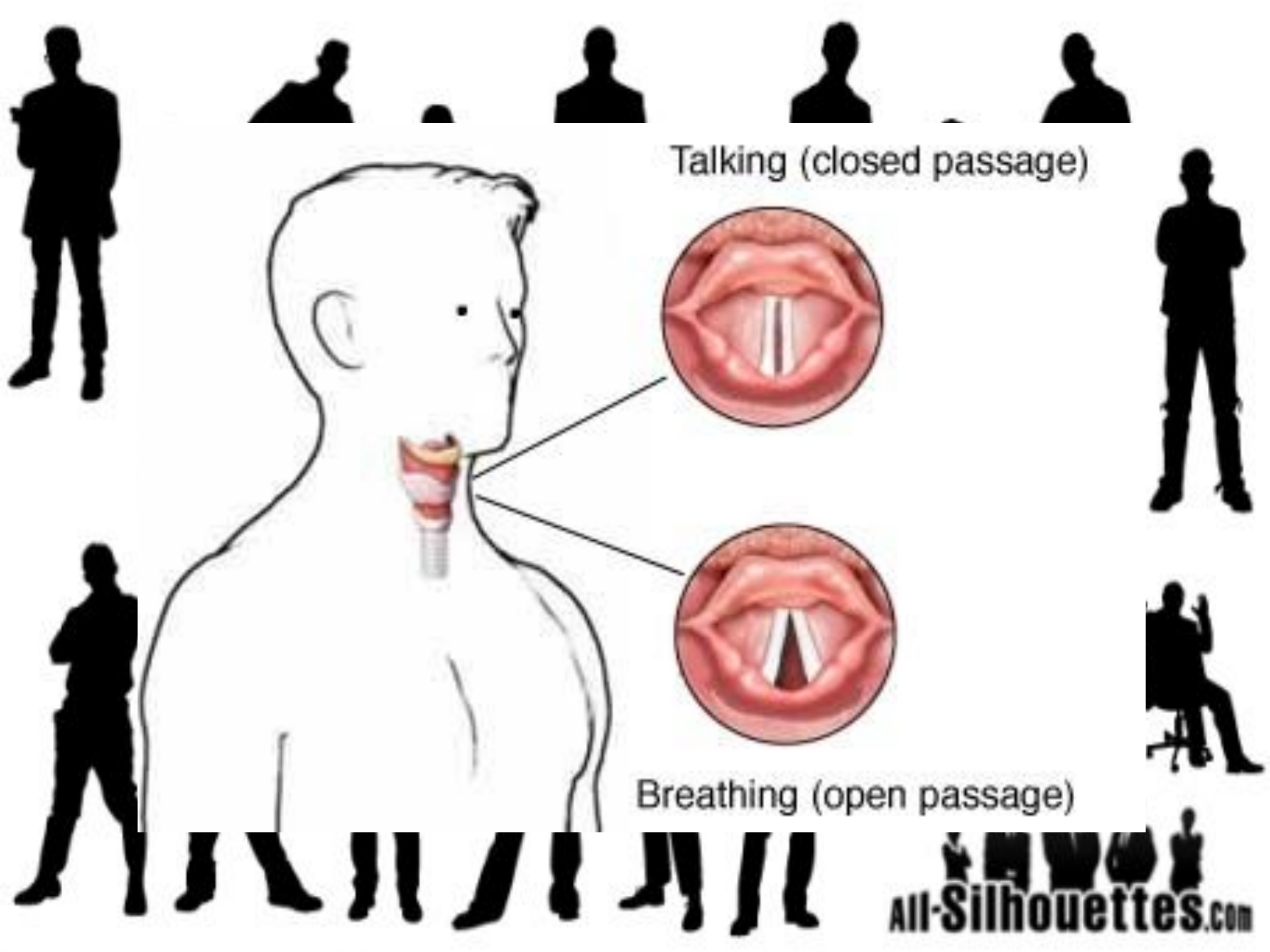


# Body Talk









Talking (closed passage)



Breathing (open passage)



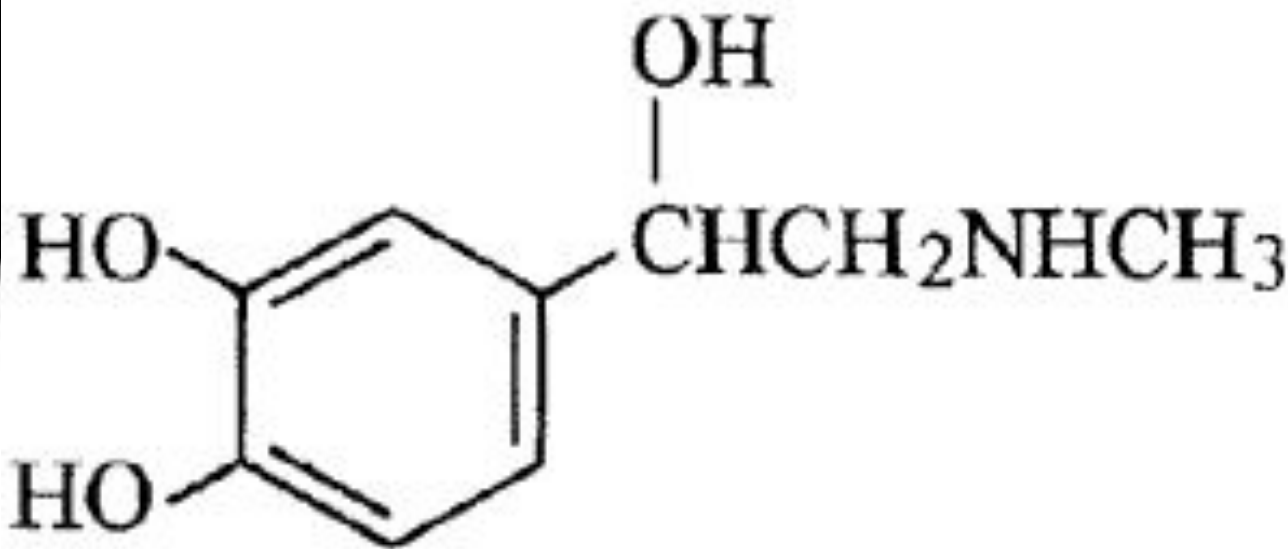


  
**All-Silhouettes.com**



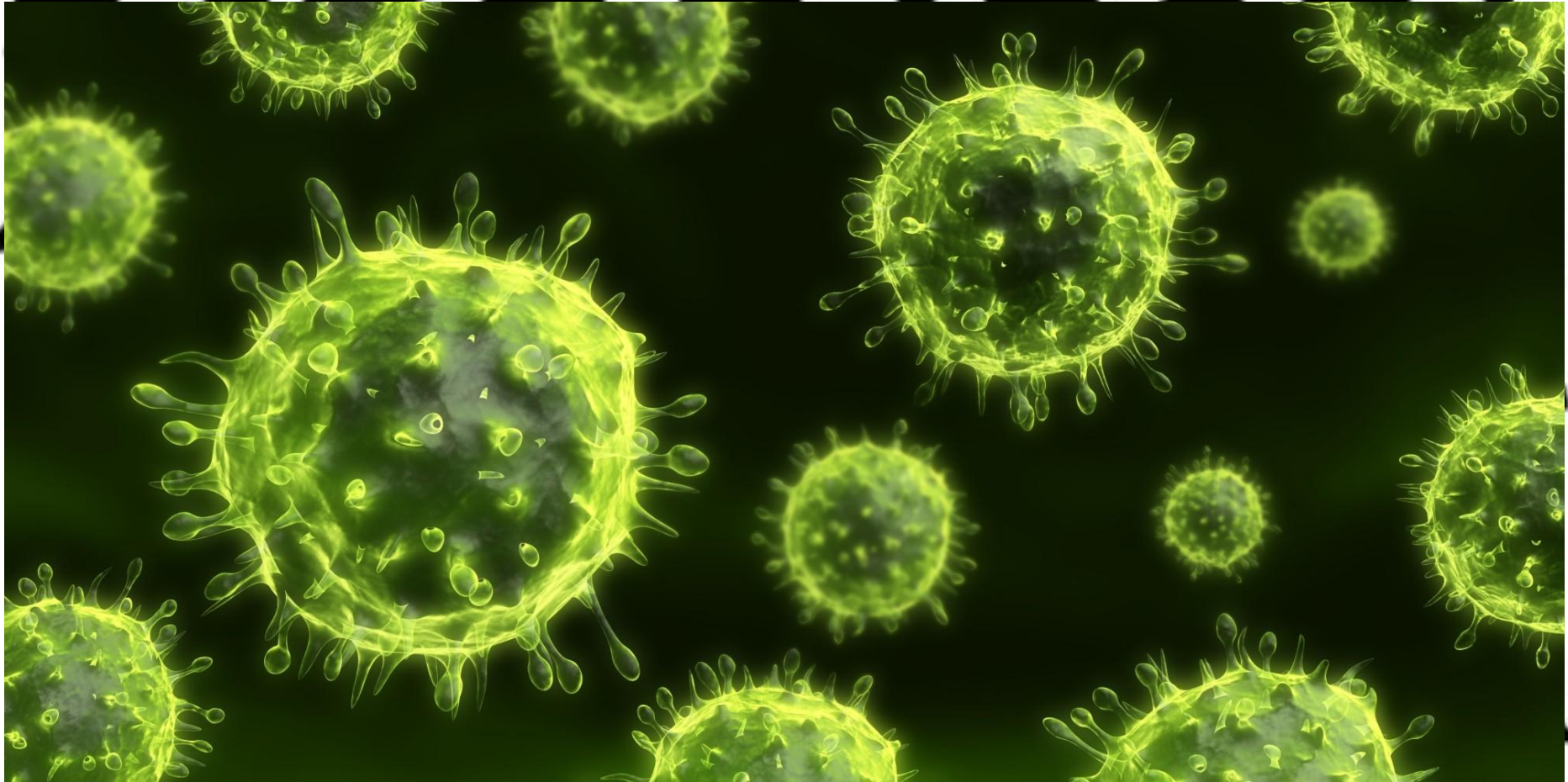










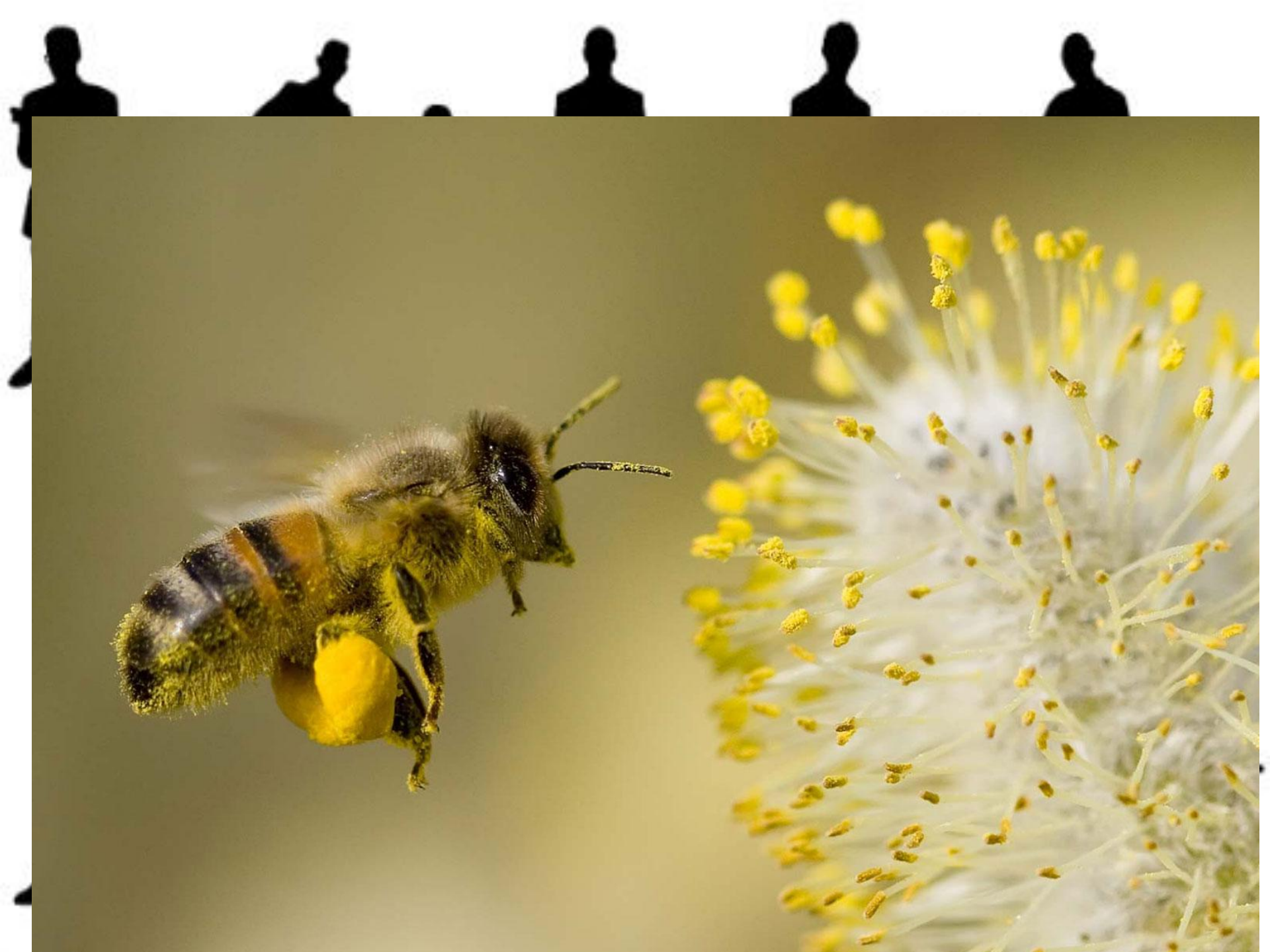


**All-Silhouettes.com**







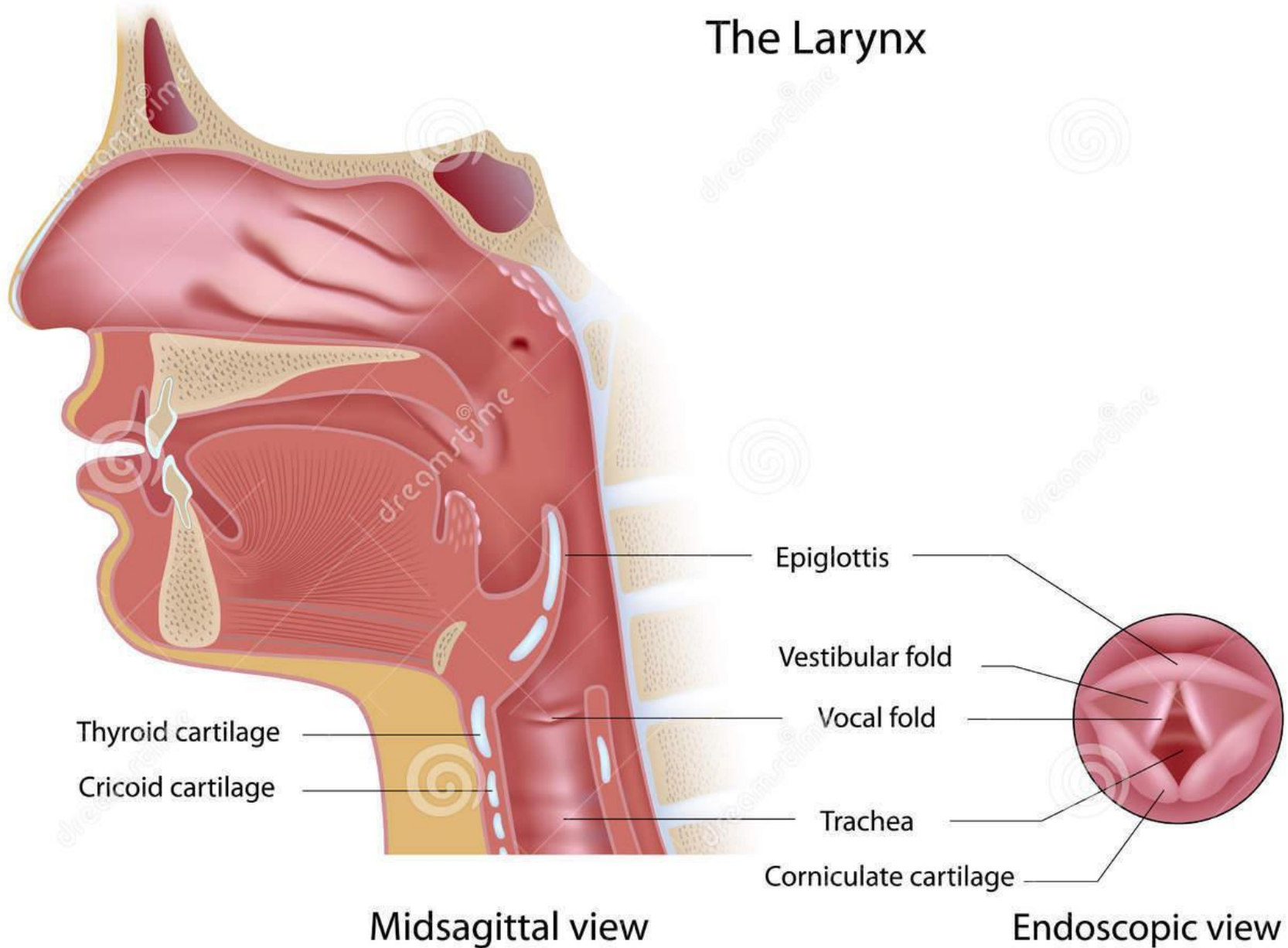






All-Silhouettes.com

# The Larynx



Midsagittal view

Endoscopic view