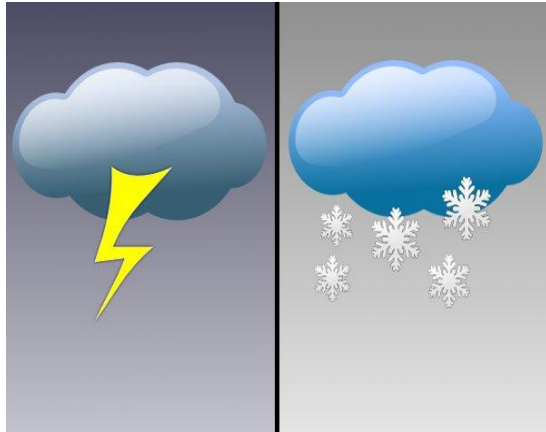


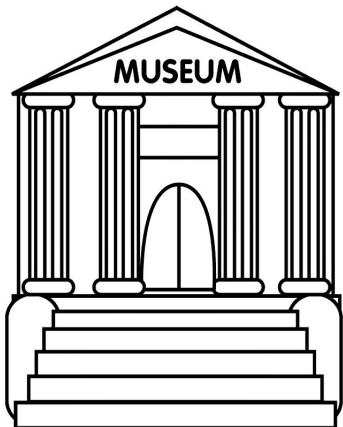


***The sights of  
London***

# The weather



- **Cold, rainy**
- Museums;
- Theatres;
- Cinemas;
- Galleries.



- **Sunny, warm**
- Open air sights;
- Parks;
- Squares.













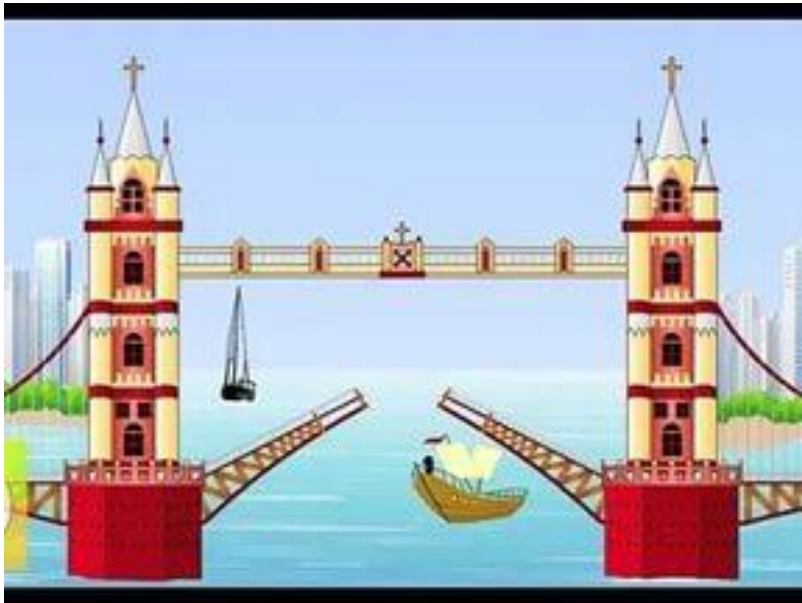
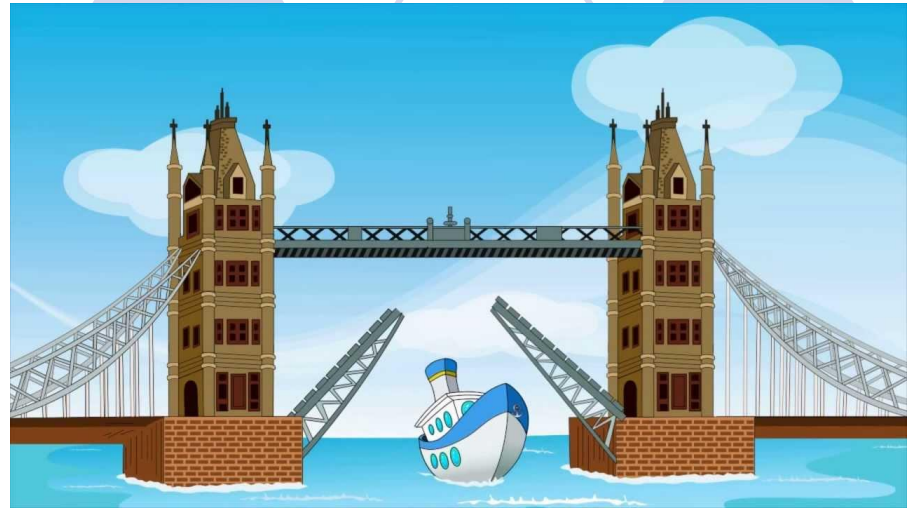












It is a great, wonderful monument to the English history.



It is situated in a very big, tall, high tower.



It is a big, huge, giant wheel.





Some cultural events and activities take place here.



Many tourists, visitors, travelers would like to hear its voice.



It opens to let ships up and down the Thames.



The guards or the soldiers are called here the Beefeaters.



It is the main cathedral or the main church in London.



lot of lovely, nice fountains are situated here.



It was a fortress, a castle, a stronghold.



It is a modern, new, contemporary building.





The persons who are people's voice,  
country's leaders speak here.



A lot of old, ancient legends are connected with it.



The statue or the monument to  
Nelson stands here.



This bridge is famous, well-known all over the world.



Church to happen sight event  
to take photos tourist lovely  
beautiful cathedral well-known  
old gallery high house  
statue to be built to  
be situated to be worth visiting  
activity visitor take place giant  
to look after castle abbey places  
of interest ancient to take care to  
take pictures to stand fortress  
museum famous wonderful nice  
monument to be interesting to visit  
to be founded building huge tall



Church - cathedral - abbey

To happen - take place

Sight - places of interest

Event - activity

To take photos - to take pictures

Tourist – visitor

Lovely - nice

Beautiful – wonderful

Well-known - famous

Old - ancient

Gallery- museum

High - tall

House - building

Statue – monument

To be built- to be founded

To be situated - to stand

To be worth visiting - to be interesting to visit

Huge - giant

To take care - to look after

Fortress -castle

- Westminster Abbey is a working cathedral.
- There are a lot of places of interest in London.
- A lot of nice fountains are situated in Trafalgar Square.
- Big Ben is famous all over the world.
- This town was build 300 years ago.
- The building is very beautiful.
- The Tower is an old castle.
- Big Ben stands in the centre of London.
- The tourists make photos of Buckingham Palace.
- The Beefeaters look after the black ravens in the Tower.
- The soldiers in front of Buckingham Palace wear big fur hats.
- The London Eye is a big wheel.
- A lot of visitors come to Westminster Abbey.
- This statue is well-known.
- A lot of activities take place in Trafalgar Square.

## Have you ever heard of Opposite Day

### When everything works other way?

When *good* means *bad*

And *right* means *wrong*.

*Night* is *day*

And *short* is \_\_\_\_\_.

*Up* is *down*

And *in* is *out*.

And *stop* means *go*

And *shush* means \_\_\_\_\_.

*I want it* means

*I really don't.*

*I'll do it* means

*I really* \_\_\_\_\_

*I'm hungry* means

*I'm really not.*

*It's cold in here* means

*It's too* \_\_\_\_\_!

And *Yes, I am a sleepy head*

Means *I'm not ready for* \_\_\_\_\_!

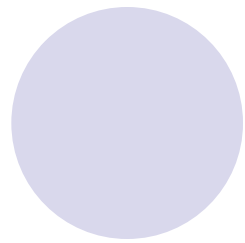
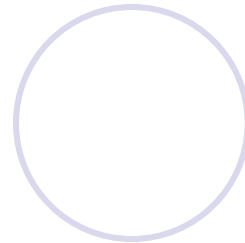
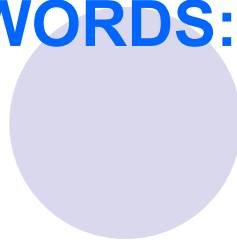
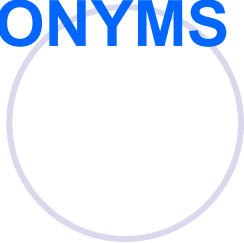
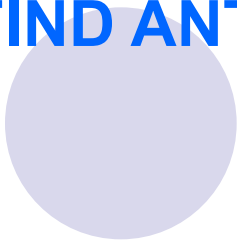
Well, that's the way you have to play

When all night long it's Opposite \_\_\_\_\_!

**ANTONYMES ARE OPPOSITES!!**



● FIND ANTONYMS TO THE WORDS:



● Bottom

●

Old

adults

●

Long

warm

●

Short

modern

●

Uncle

●

Ugly

●

Low

●

Always

●

Small


to destroy

●

Funny

dull

- Big Ben is situated in the low bridge.
- Big Ben is situated in the high tower.
- Westminster Abbey was destroyed by King Edward.
- Westminster Abbey was built by King Edward
- The equator is situated in Greenwich.
- The Prime Meridian is situated in Greenwich
- White swans live in the Tower.
- Black ravens live in the Tower.
- The guards in the Tower are called Tee drinkers.
- The guards in the Tower are called Beefeaters.
- There are a few ugly wells in Trafalgar Square.
- There are a lot of lovely fountains in Trafalgar Square.
- The Tower is a modern cinema.
- The Tower is an ancient fortress.
- The Beefeaters kill the black ravens in the Tower.
- The Beefeaters take care of the black ravens in the Tower

- 
- Nobody knows Big Ben.
  - Big Ben is well-known all over the world.
  - Tower Bridge never opens.
  - Tower Bridge opens to let the ships up and down the river.
  - The London Eye is tiny triangle.
  - The London Eye is giant wheel.
  - Only local citizens sometimes visit the Tower.
  - A lot of tourists from other countries usually visit the Tower.
  - London is a typical European capital.
  - London is different from other European capitals.
  - The Tower has a short funny history.
  - The Tower has a long cruel history .
  - In July there is a small Palma in Trafalgar Square.
  - In December there is a big Christmas tree in Trafalgar Square.
  - A few modern poems are connected with the Tower.
  - A lot of ancient legends are connected with the Tower.
  -

# *A sanguine about the lesson*



- 1. LONDON
- 2. WONDERFULL, BEAUTIFUL
- 3. GROWS, DEVELOPS, ATTRACTS
- 4. I WANT TO VISIT ONE DAY
- 5. ONE OF THE BEST CITIES OF THE WORLD.