



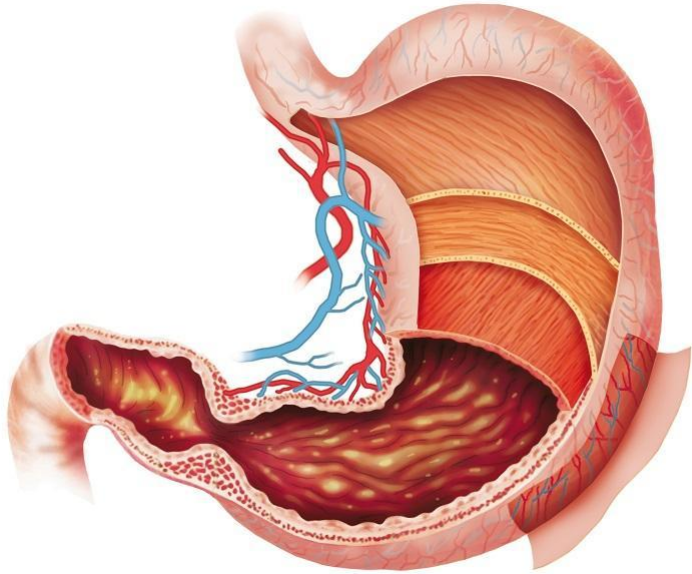
# Administration of drugs

Prepared by student of group 49fm4  
Korotkova Kristina

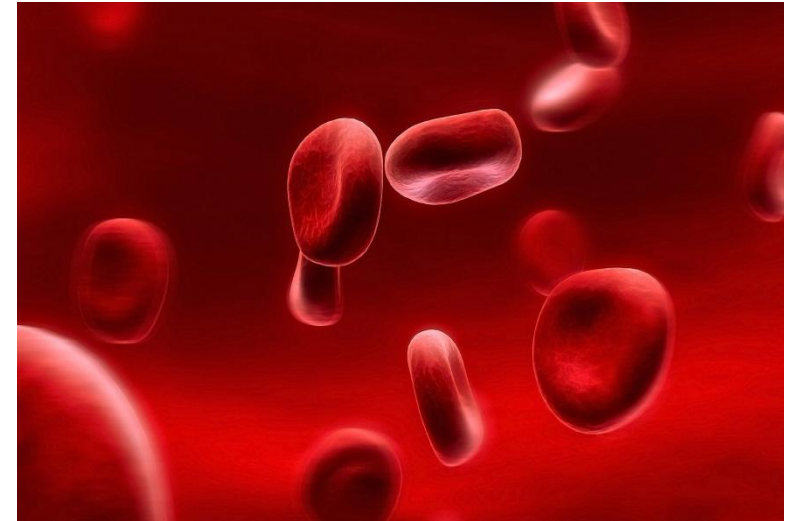
Bryansk 2016



# Oral administration



passes into the stomach



absorbed into the blood

# Sublingual administration



not swallowed



placed under the tongue



dissolve in saliva



# Rectal administration



given by rectum



difficulties such as nausea and vomiting



# Inhalation



of administration vapours or gases



taken into the nose or mouth

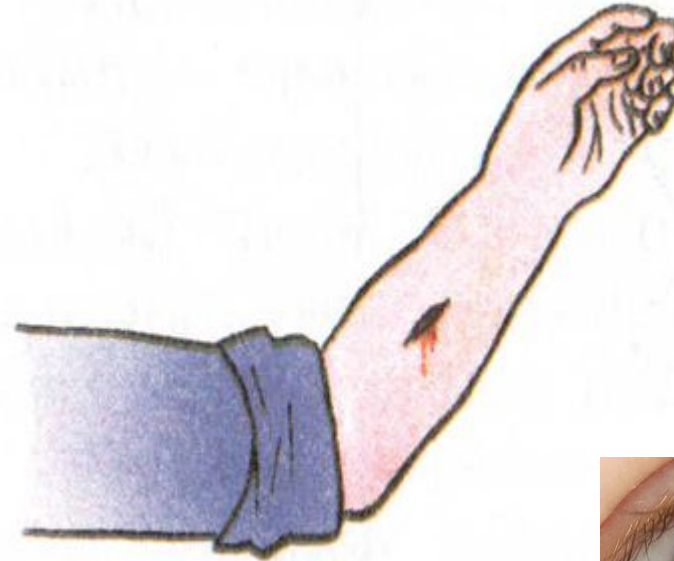


absorbed into the blood

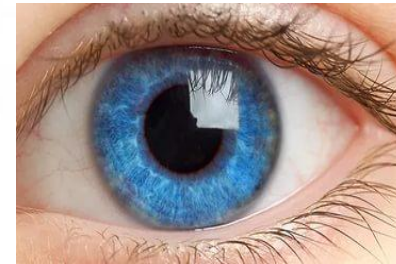
# Topical application



with skin or mucous membranes  
of the mouth



for healing abrasions  
for the treatment of wounds



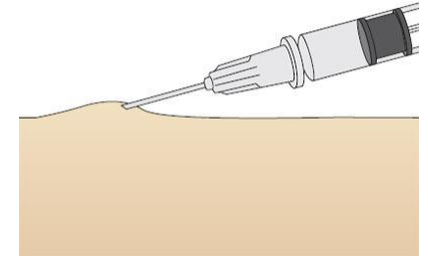
can use drugs in the eyes, ears,  
nose and vagina



# Parenteral administration



by injection through a syringe



types of injections: subcutaneous, intradermal,  
intramuscular, intravenous

**Thank you for your  
attention!**

