

# British cinema

Is made by  
Liza Skorohvatova





# The most famous films



# The most famous films



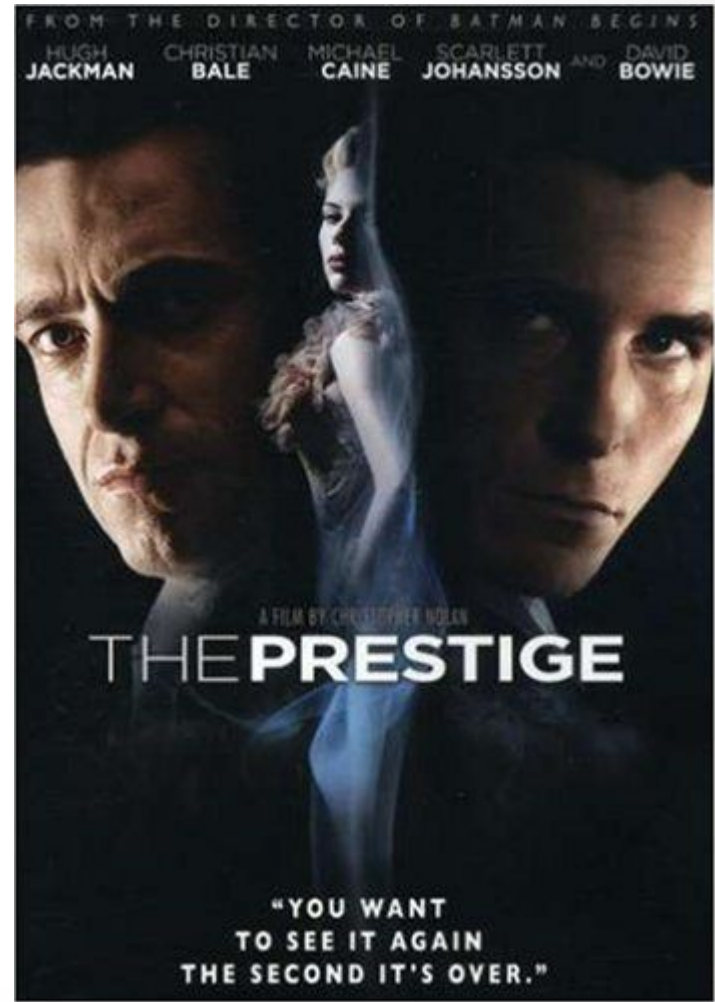
# Kate Winslet



# Anne Hathaway

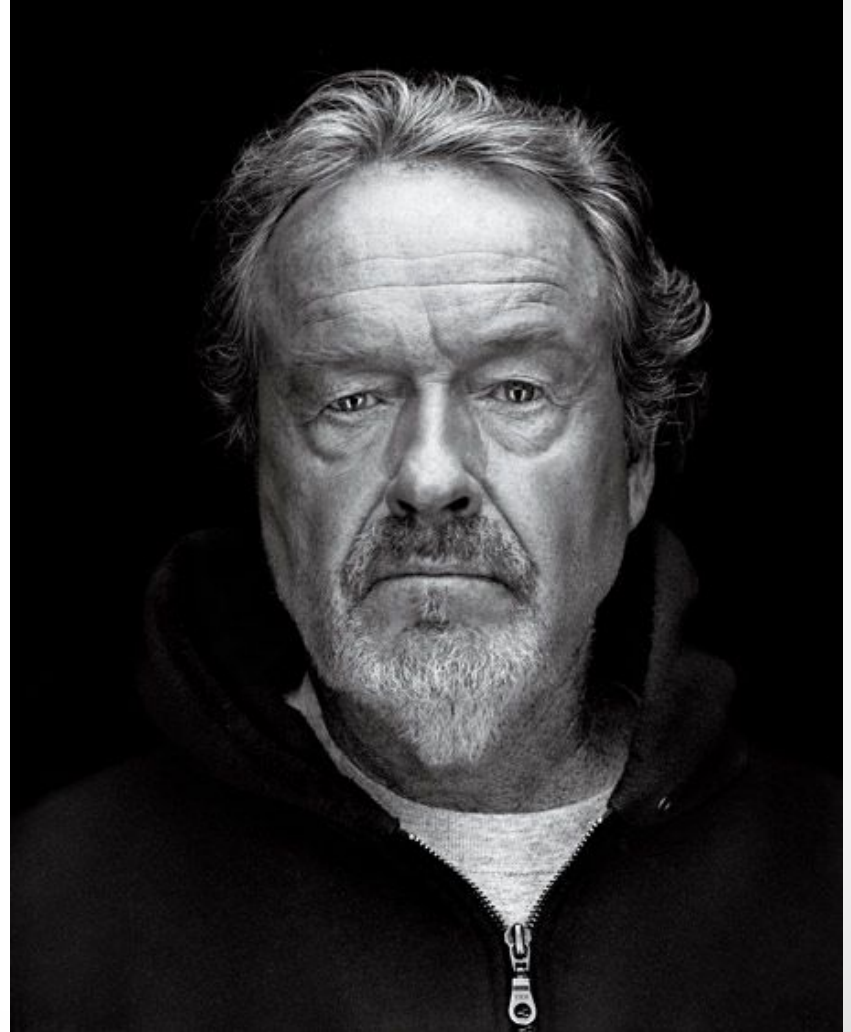


# Films





# Famous directors



# Famous performers



**B**  
**F**  
**I**

The image features the letters 'B', 'F', and 'I' in a bold, black, serif font. The 'B' is positioned at the top left, the 'F' is in the middle, and the 'I' is at the bottom right, all within a diagonal sequence. A large, semi-transparent purple circle encircles the 'F' and 'I'. A bright white lens flare with a purple glow is located at the bottom right of the circle, with a small purple dot positioned just above it. The background is solid black.