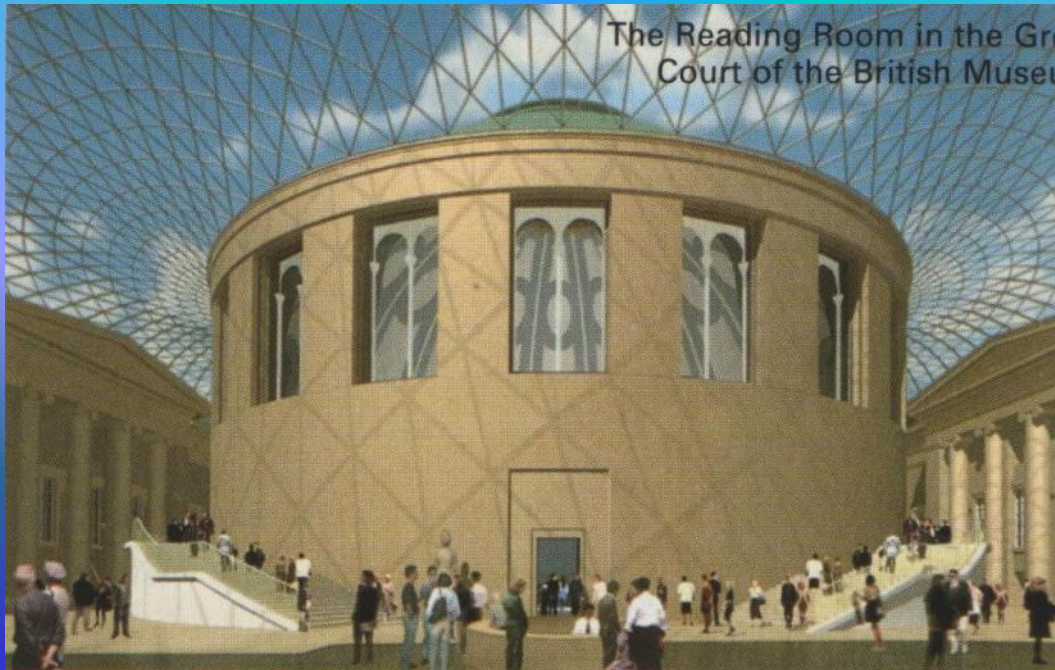


# British Museum

The British Museum displays historic objects from many cultures, including ancient Egypt, Greece and Roman British. It opened in 1759, making it the oldest public museum in the world. Its present building date from Victorian times, though it was recently extended.



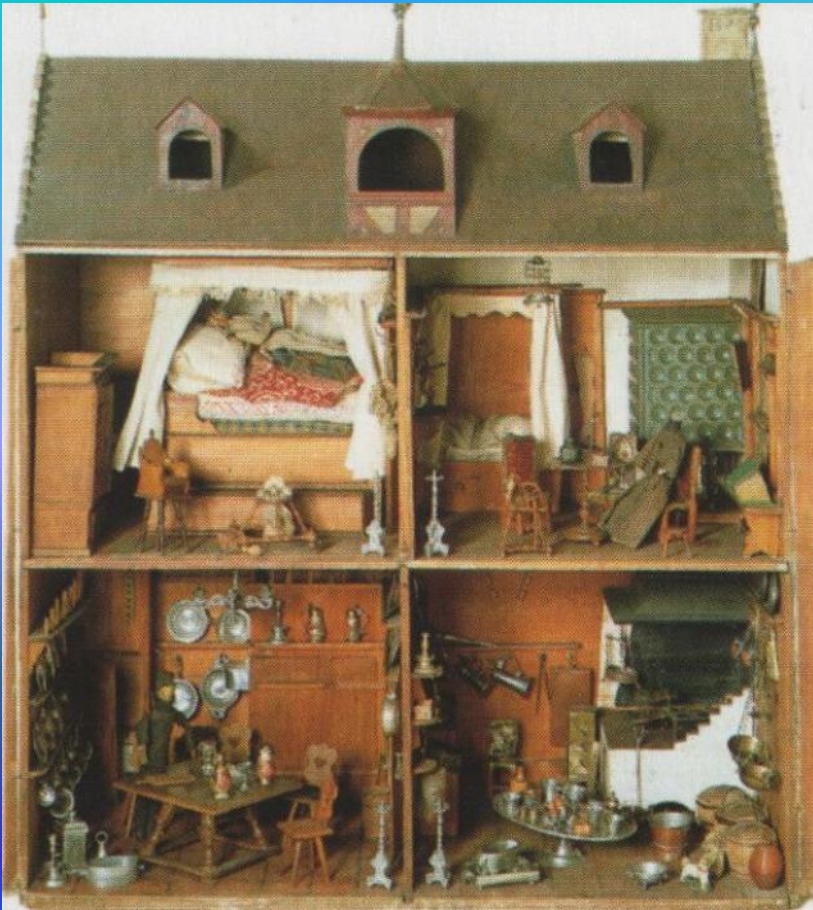


**Front entrance of British Museum**

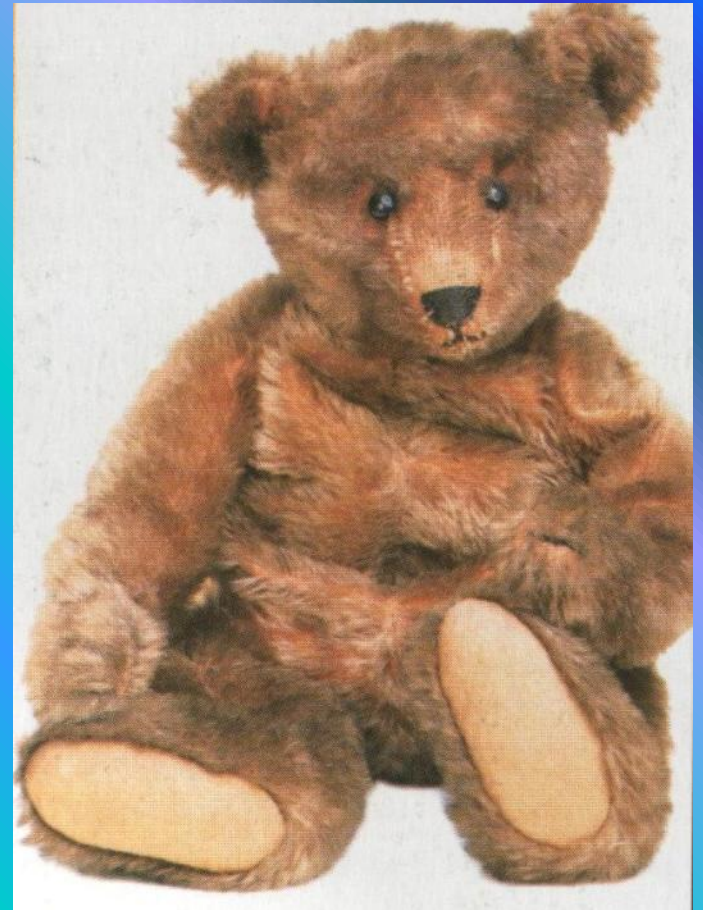
# Museum of Childhood



The Bethnal Green Museum of Childhood tells the story of childhood from the sixteenth century to today. It has one of the largest collections of toys in the world. As well as toys, you can see children's furniture and clothes, including a complete Victorian girl's wardrobe. There are workshops and events based on the collections, too.



**An old doll's  
house**



**A museum teddy  
bear**

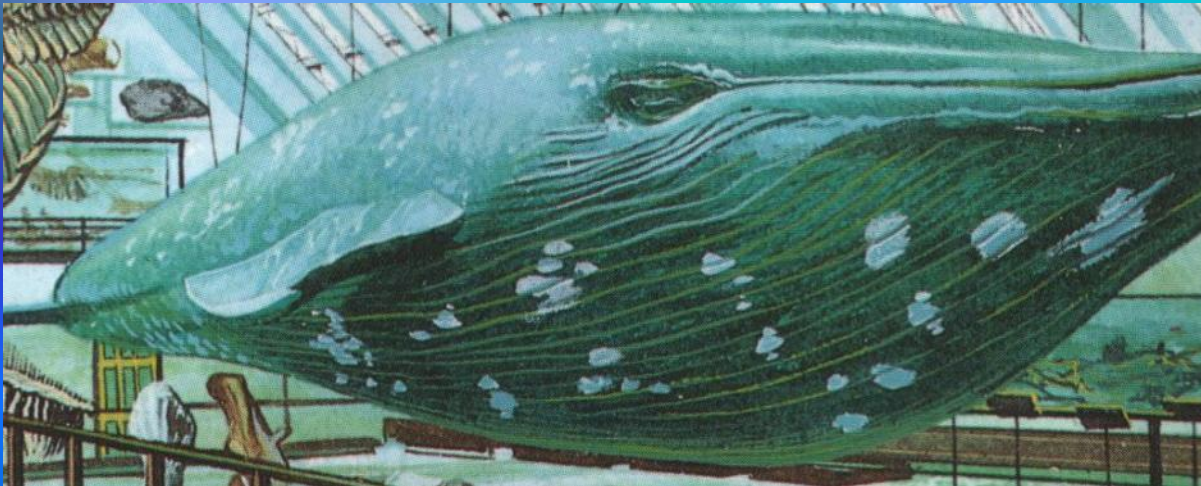
# Natural History Museum

The Natural History Museum has a huge collection of animals, plants, rocs and fossils. The display are designed to let you discover things for yourself and hands-on activities. The museum has interactive online exhibitions, too.





**Earth Galleries**

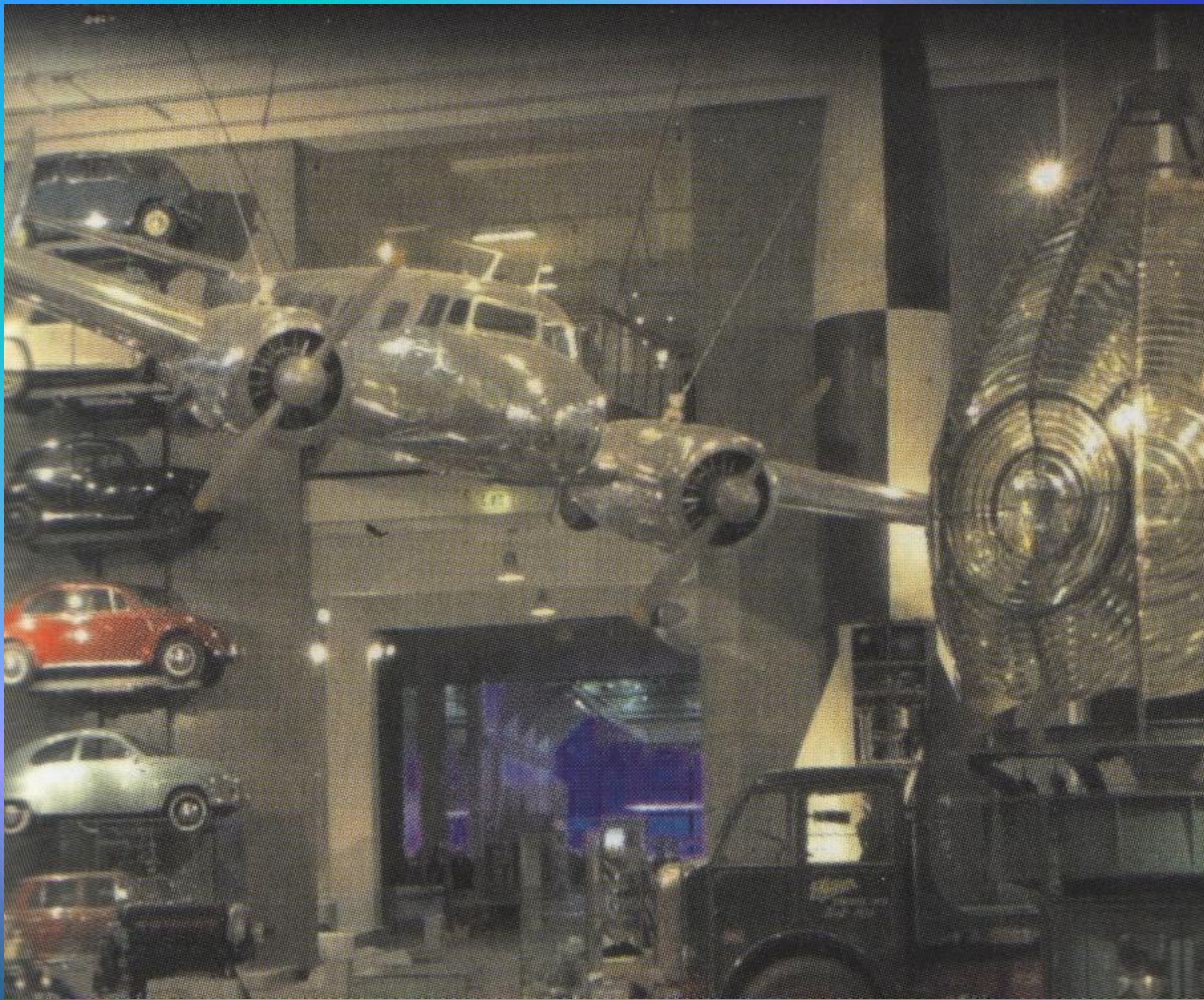


**Mammals  
Galleries**

# Science Museum

The Science Museum is designed to help people understand science both past and present. The display show everyday machines as well as very advanced ones, from ordinary calculators to real spacecraft.





**Museum machines**



# Madame Tussaud's

Madame Tussaud's is the world's most famous wax museum. Every year, over two million visitors go there to see the lifelike wax figures of famous people. You can see famous actors, models, sports, royals and politicians. Famous criminals are kept in the Chamber of Horrors.



# World of Rock & Pop

