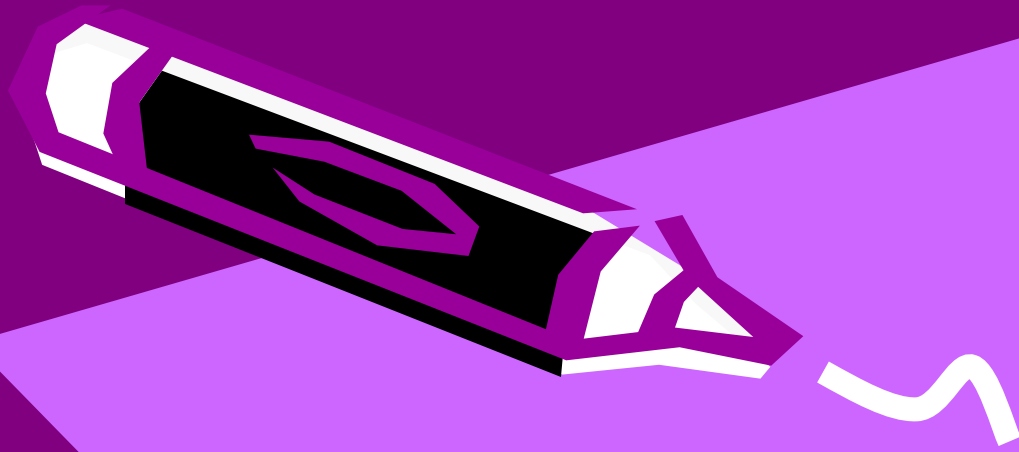


British school system!



History



- In the VI century church opened school for clergymen, later grammar schools were opened. In 1880 year education was compulsory for everybody. Since 1944, education has been available free of charge to all British children. It is compulsory for all children to go to school until the age of sixteen. For example

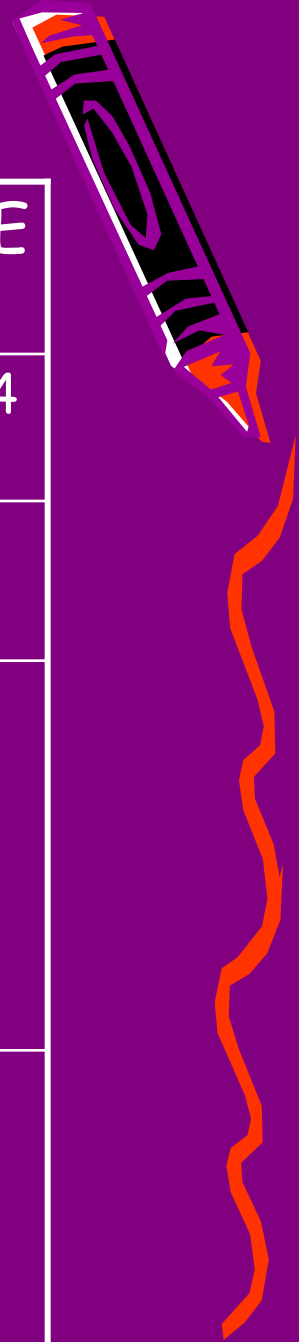


Risley

Risley has a long history of education dating back to 1583 when Sir Michael Willoughby, Lord of the Manor of Risley and his wife Catherine founded and endowed a school in the village probably in Risley Hall.



British school system!



CLASS	SCHOOL	AGE
	Nursery school playgroup or kindergarten	3 - 4
Reception class		5
Year 1		6
Year 2	Primary school Junior school	7
Year 3		8
Year 4		9
Year 5		10
Year 6		11
Year 7		Secondary school
Year 8	13	
Year 9	14	
Year 10	15	
Year 11	16	



Year 12 } Year 13 }	sixth form college	17 18
First year (fresher) second year third/final year	University or Polytechnic	19 20 21
Postgraduate	University	23

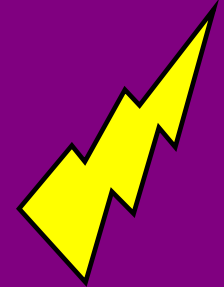
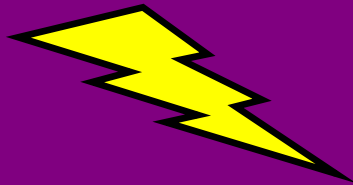
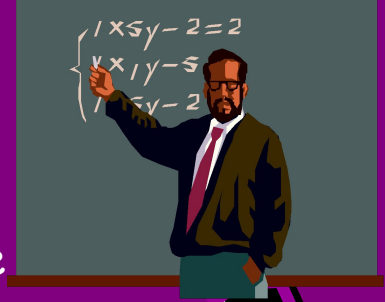


- In Britain school begins at the age of five, but before that children can go to nursery school playgroup or kindergarten at the age 3-4.
- In Primary School children learn to read and write and the basis of arithmetic. In the higher classes of Primary School (or in Middle School) they learn geography, history, religion and, in some schools, a foreign language. Then children go to the Secondary School



Secondary School

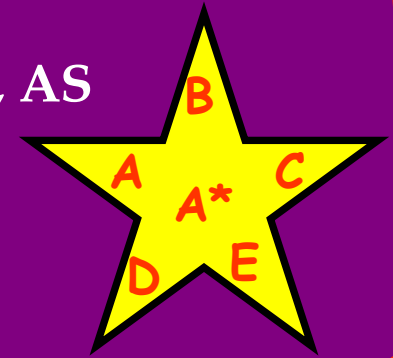
Most secondary schools in Britain are comprehensive schools: state schools, which take children of all abilities. Secondary School begins at age of 12 to 16 years. Children learn geography, history, religion, math, foreign languages, music, P.M, art...



Exams and marks



- Between the age of 14 and 16, pupils study for their GCSE (General Certificate of Secondary Education) or "O level" (Ordinary level) exams.
- Pupils must take English language, Maths, and Science for GCSE, as well as a half GCSE in a foreign language and Technology.
- In addition, they must also be taught Physical Education, religious Education and Sex Education, although they do not take exams in these subjects.
- If pupils stay on, they usually take A (Advanced) levels, AS (Advanced Supplementary) levels or GNVQs (Greater National Vocational Qualifications).
- Marks: A* - excellent, A,B,C - good, D,E - badly.



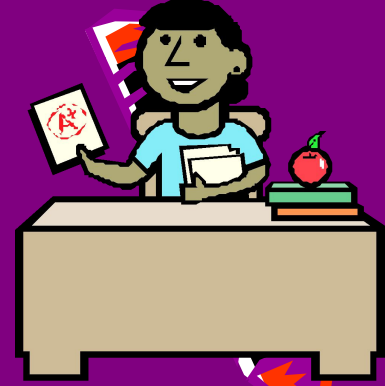
School uniform

- Most pupils in British schools wear school uniform.
The favorite colors for uniforms are blue, yellow, grey, black and maroon.



Bell Times

- 1) 8.40 a.m. - School begins
- 2) 8.45 a.m. - Registration
- 3) 8.50 a.m. - Assembly bell
- 4) 9.00 a.m. - Pupils move to lessons
- 5) 9.05 a.m. - Lesson 1
- 6) 9.45 a.m. - Lesson 2
- 7) 10.25 a.m. - Lesson 3
- 8) 11.05 a.m. - Break
- 9) 11.25 a.m. - Pupils move to lessons
- 10) 11.30 a.m. - Lesson 4
- 11) 12.10 p.m. - Lesson 5
- 12) 12.50 p.m. - Lunch time
- 13) 1.40 p.m. - Afternoon school begins
- 14) 1.45 p.m. - Registration
- 15) 1.50 p.m. - Lesson 6
- 16) 2.30 p.m. - Lesson 7
- 17) 3.10 p.m. - End of normal lessons
- 18) 3.10 p.m. - Start of additional lessons, clubs, societies, team practice, detentions, etc.



The end!



Mitsato
neon genesis evangelion