

CHARLES

I

THE KING OF ENGLAND, SCOTLAND AND IRELAND.

CHARLES I



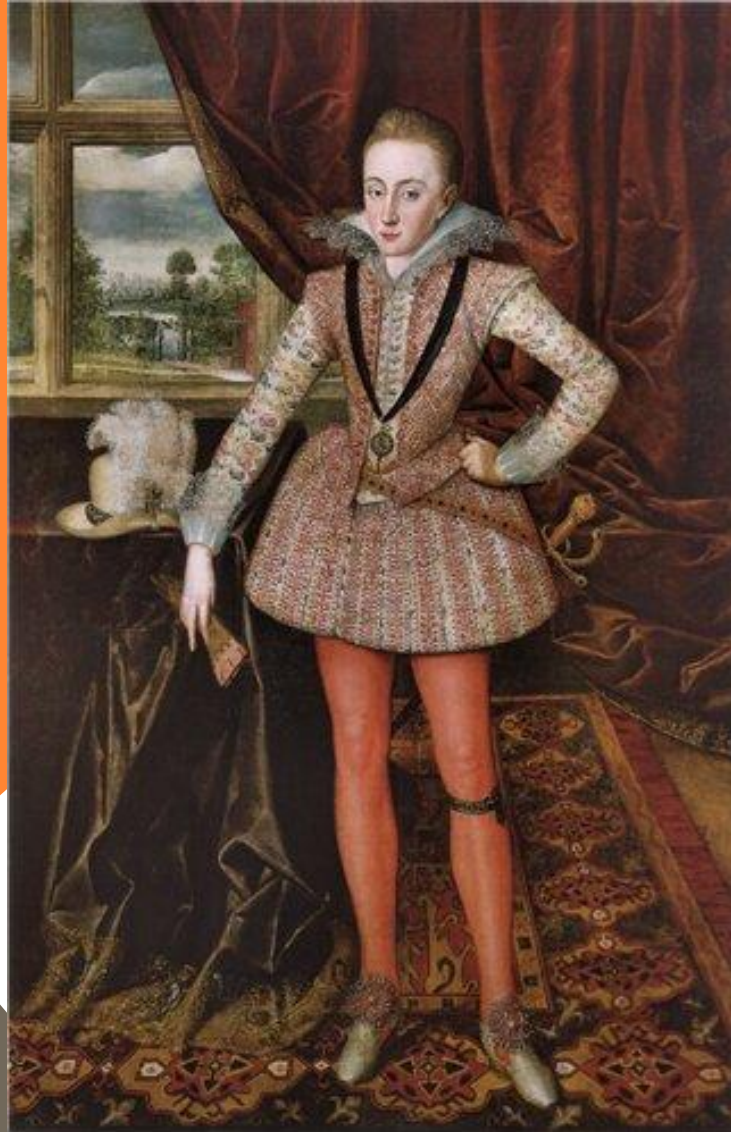
He was born on **19 November**
1600

Y



Charles I was the second son of the king of England and Scotland, James I and Anne Danish.

Y



His brother Henry, Prince of
Wales

EARLY YEARS



Charles in 1603 was elevated to the title of Duke of Albany, and in 1605, was created Duke of York. In 1612 Prince Henry died, and Charles became heir to king James I, Prince of Wales and Earl of Chester (1616).

LIFE



Charles married Henrietta Maria, daughter of Henry IV(king of France)on may 11, 1625 in the

LIFE



His children Charles II ,James II ,Henry,Mary, Elizabeth, Anna, Henrietta.

THE REIGN OF KING



He wanted to solve cases of illicit ship taxes and on religious issues.

THE PENALTY



© National Galleries of Scotland

Charles was beheaded at Whitehall January 30, 1649. He was recognized as a tyrant and a traitor.



THANK YOU FOR YOUR
ATTENTION