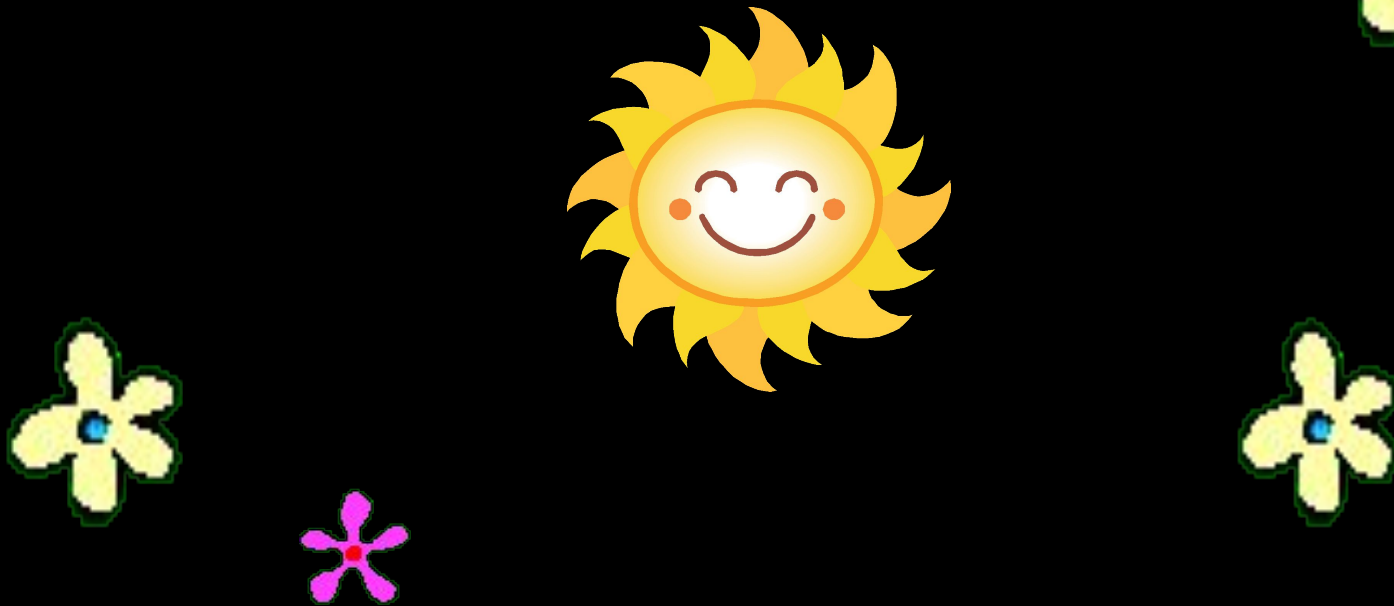


Comparison of adjectives and adverbs



- **Comparatives** of adjectives are formed with **-er** or with **more**.
- **Superlatives** are formed with **-est** or with **most**.
- Comparatives and superlatives of **adverbs** are normally formed with **more** and **most**, though there are some exceptions.



Adjectives of **one syllable**: add
-er and **-est**:

Strong stronger the strongest

Wise wiser the wisest

Dry drier the driest

Hot hotter the hottest



- People grow **older** and **wiser** every day.



Some are irregular:

Bad worse the worst

Good better the best

Far further the furthest

Far farther the farthest

Little less the least

Much more the most

Many more the most





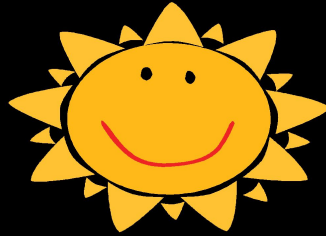
- ☐ Sunny weather is **better** than rainy weather.



- ☐ Stormy weather is definitely **the worst**.

Adjectives of **two or more syllables**
take **more** and **most** except
two-syllable adjectives which end in

-y:



Famous **more** famous the **most** famous
Beautiful **more** beautiful the **most** beautiful
Funny **funnier** the **funniest**



□ Jaan is a famous musician in his village.

□ Elvis Presley was one of the most famous rock musicians in the world.



The following **two-syllable** adjectives can take either **-er/-est** or **more/most**:

- Common, cruel, gentle, handsome, immature, mature, narrow, pleasant, polite, shallow, simple, stupid.



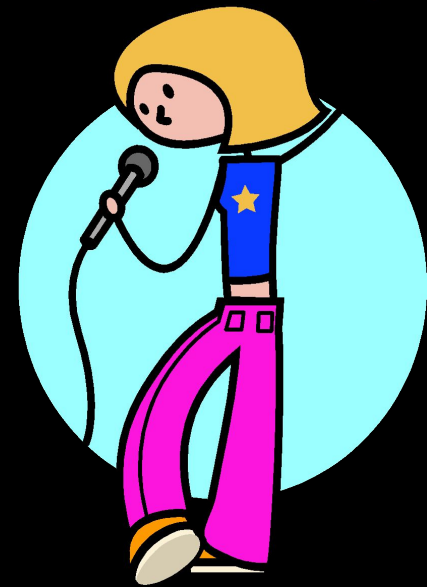
Stupid stupider the stupidest

Stupid more stupid the most stupid

Most adverbs take **more** and **most**:

Easily **more** easily **most** easily

Loudly **more** loudly **most** loudly



- I wake up **easily**, because my alarm clock rings **loudly**.

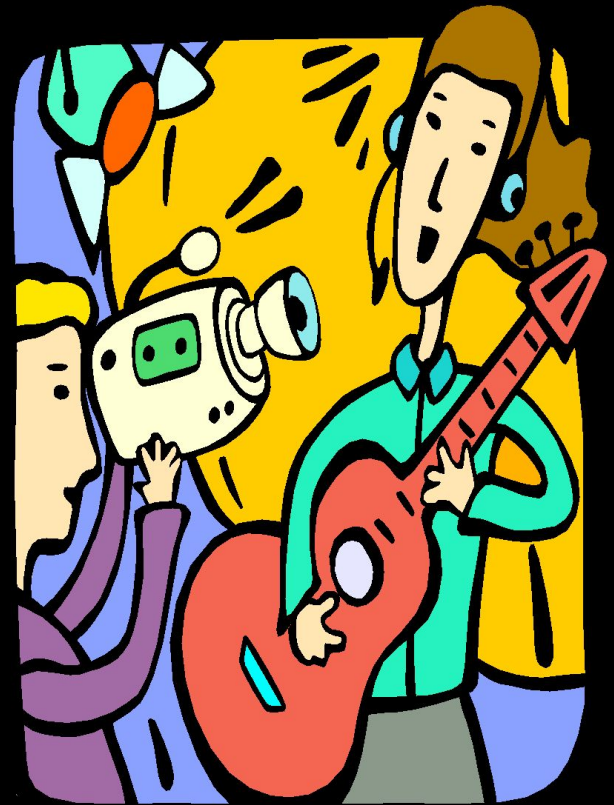


- My brother wakes up **more easily**, because his alarm clock rings **more loudly**.



Some are irregular:

Well better best
Badly worse worst



Adverbs with the same form as adjectives form comparatives and superlatives in the same way as adjectives:

Fast	faster	fastest
Early	earlier	earliest
Hard	harder	hardest



- The horse is running **fast**.



- The sheep is running **faster** than the horse.



- The dog is running **fastest**.



Sources:

- <http://www.grammarbook.com/grammar/adjAdv.asp>
- <http://www.ego4u.com/en/cram-up/grammar/adjectives-adverbs>
- <http://a4esl.org/q/h/9901/gc-advadj.html>
- <http://www.ego4u.com/en/cram-up/grammar/adjectives-adverbs/adverbs>
- http://www.englisch-hilfen.de/en/exercises_list/adjektiv_adverb.htm
- <http://www.englishexercises.org/makeagame/viewgame.asp?id=6088>
- http://www.google.ru/search?hl=ru&newwindow=1&biw=1280&bih=841&gbv=2&tbs=itp%3Aclipart&tbm=isch&sa=1&q=animals&btnG=%D0%9F%D0%BE%D0%B8%D1%81%D0%BA&oq=animals&aq=f&aqi=g10&aql=&gs_sm=s&gs_upl=236814|270886|1|19|13|0|0|0|1|340|2144|0.9.1.2|13 pictures