

# DISCOVERING PLACES OF INTEREST IN LONDON



- The Thames
- Trafalgar square
- The tower of London
- Big Ben
- Tower Bridge
- Buckingham Palace
- St Paul' Cathedral

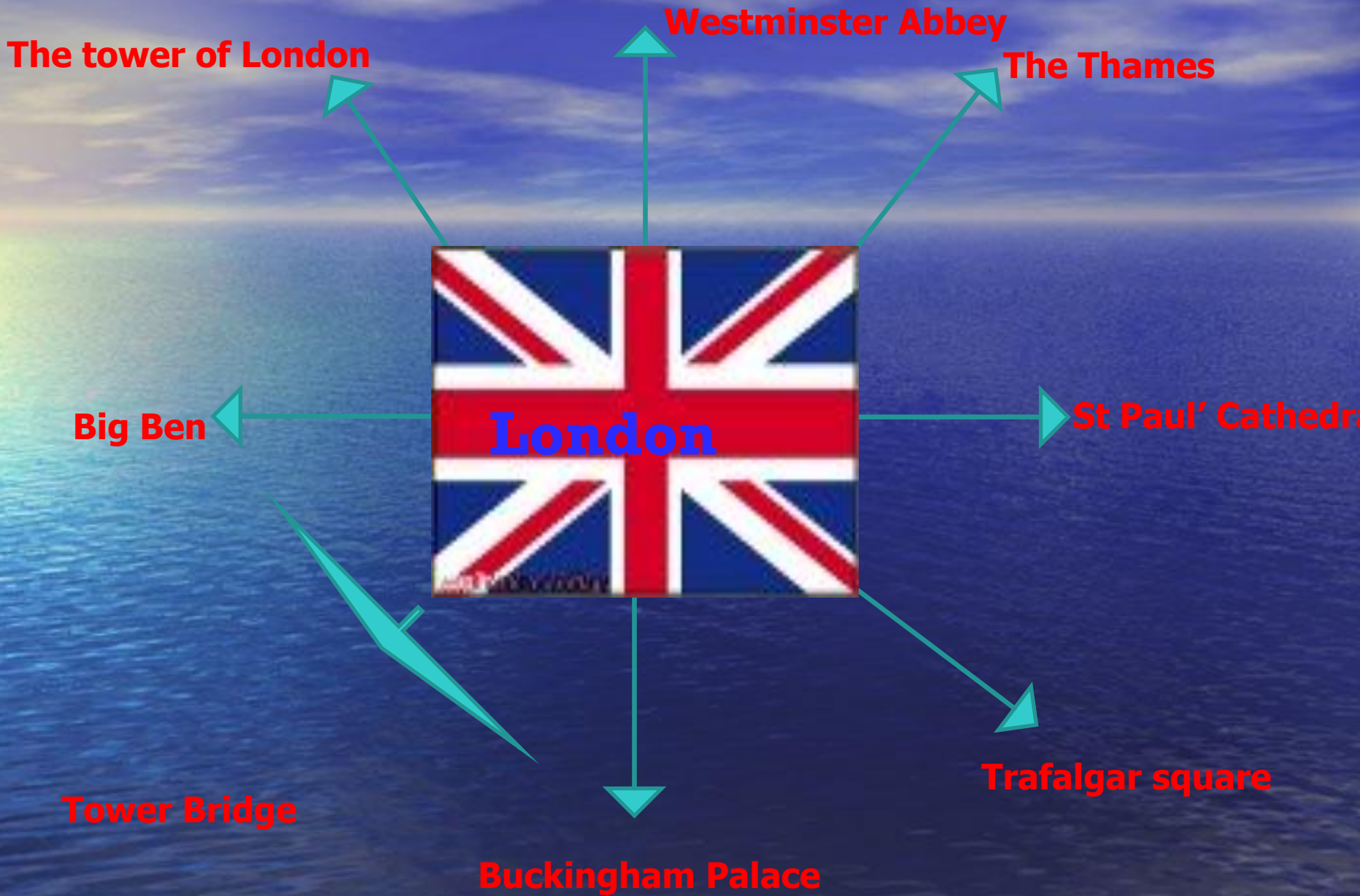
• [au]

• [ʌ]

• [ɪ]

• [w]

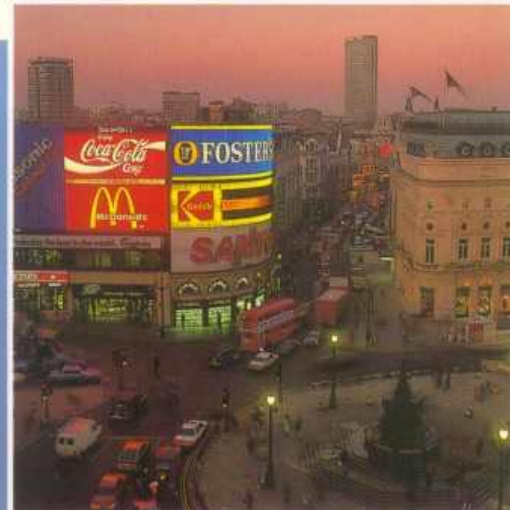
• [θ]



# London is the capital of The U.K.



**LONDON**



# The Thames



# Trafalgar Square



# Tower of London

The Tower of London has been a fortress, a palace, a prison and now it is a museum



# Big Ben





# Tower Bridge



# Buckingham palace



# The British museum



# The St. Paul's Cathedral



**Big Ben is the name  
of:**

**a) the clock tower**

**b) the architect**

**c) the church**

**The Tower of London is:**

**a) a trade center**

**b) a museum**

**c) a shop**

# The Queen lives in:

- a) the Tower of London
- b) the Houses of Parliament
- c) Buckingham Palace

**Which bridge is in  
London?**

**a) Brooklyn Bridge**

**b) Tower Bridge**

**c) Boston Bridge**



**London is situated on**

**a)The Don**

**b)The Thames**

**c) The Clyde**

