

# Do you know them?





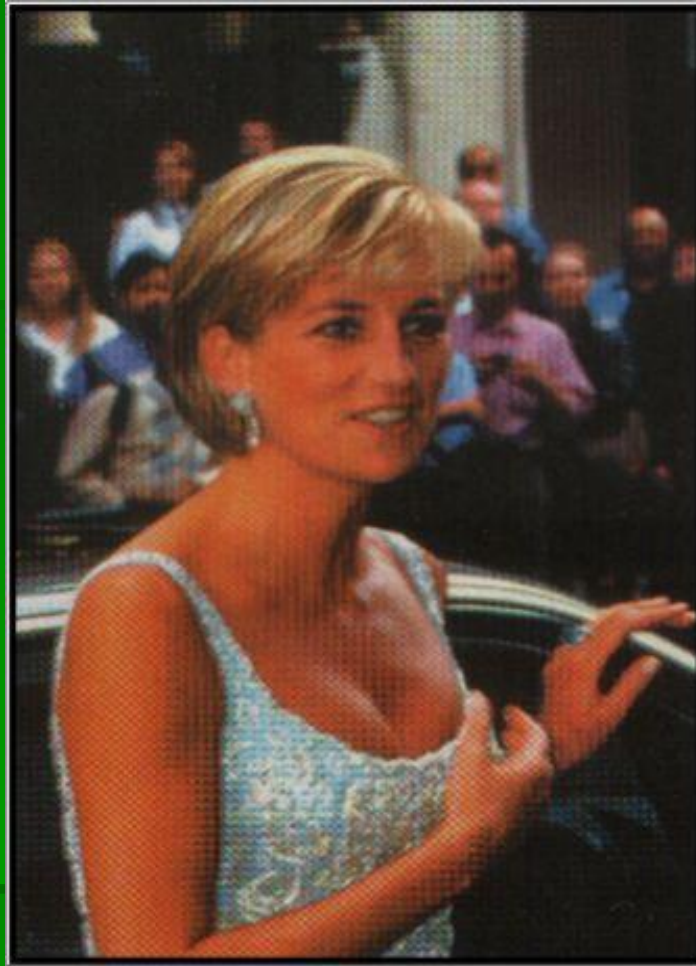
- A) Anne;
- B) Diana;
- C) Elizabeth;
- D) Camilla.



- A) Harry;
- B) William;
- C) Charles;
- D) Philip.



- A) Charles and Camilla; C) Charles and Diana;
- B) Elizabeth and Philip; D) Andrew and Sarah.



- A) Elizabeth
- B) Camilla
- C) Anne
- D) Diana



- A) Charles's family;
- B) Diana's family;
- C) Royal family;
- D) Philip's family.



- A) Elizabeth;
- B) Diana;
- C) Anne;
- D) Camilla.



- A) Elizabeth;
- B) Camilla;
- C) Diana;
- D) Anne.





- A) Arthur;
- B) William;

- C) Harry;
- D) Charles.



- A) Anne and Philip; C) Elizabeth and Harry;
- B) Elizabeth and Philip; D) Anne and William.



- A) Charles and Harry; C) Charles and William;
- B) William and Harry; D) William and Philip.



- A) Her Majesty Elizabeth ; C) Queen Victoria;
- B) Queen Elizabeth II; D) Queen Margaret.



- A) Philip;
- B) Charles;
- C) Harry;
- D) George.



- A) William;
- B) Charlie;
- C) Philip;
- D) Harry.