

Добро пожаловать на Алтай!

Составитель: Ударцева Елена Юрьевна,
учитель английского языка
ОУ : «Баевская МСОШ Алтайского края»

Welcome to Altai!





НОВОСИБИРСКАЯ
ОБЛАСТЬ

КЕМЕРОВСКАЯ
ОБЛАСТЬ

Барнаул

Новокузнецк

Горно-Алтайск

АЛТАЙСКАЯ
РЕСПУБЛИКА

Колыванский
район

Чарышский
район

оз. Чань
оз. Мал. Чань

Чулым

Новосибирское
водохранилище

Баклуши

Верхний Ирмень

Бердск

Искитим

Ленинск-Кузнецкий

Белово

Маслянино

Гурьевск

Салаир

Краснозерское

Карасук

Крутиха

Панкрушиха

Камень-на-Оби

Хабары 266'

Ордынское

Чингис

Черепаново

Сузун

Тальменка

Заринск

Новоалтайск

Тогул

Бурла

Верх. Суетка

Баево

Тюменцево

Павловск

Косиха

Налобиха

Знаменка

Славгород

Яровое

Благовещенка

Леньки

Мамонтово

Ребриха

290'

Парфеново

Калманка

Троицкое

621'

оз. Кучукское

Кулунда

Родино

Ключи

Каип

оз. Горькое

324'

Волчиха

Шалдай

Михайловский

Малиновое Озеро

Новоогорьевское

Курья

Калмыцкие Огни

Быстрый исток

Бийск

Сростки

Красногорское

Петропавловское

Белокуриха

Алтайский

1008'

Шарбакты

Шалруха

Рубцовск

Змеиногорск

1206'

Маралиха

Чарышское

2491'

Шебалино

Чемал

Большая Владимировка

Молдавы

Горняк

Третьяково

Сентелек

2299'

Усть-Кан

2506'

Онгудай

52°

54





Station
first-cities

Welcome to Barnaul



© Андрей Бирюков

Barnaul - a city in Western Siberia, on the banks of the Ob River (near a tributary of the Barnaulka), the administrative center of the Altai Region.

History

The city was founded by Akinfiy Demidov (1678-1745), a Russian founder of the mining industry in Altai in 1730.

Geography

The city is located in the steppe zone of the West Siberian Plain, on the north east of the Ob plateau on the left bank of the Ob, where the Barnaulka river flows into the Ob.

- The distance from Moscow - 3419 km.*
- The nearest big city - Novosibirsk (193 km).*
- The absolute height above sea-level city of 130-250 m.*
- The area of the city - 321 km. square.*

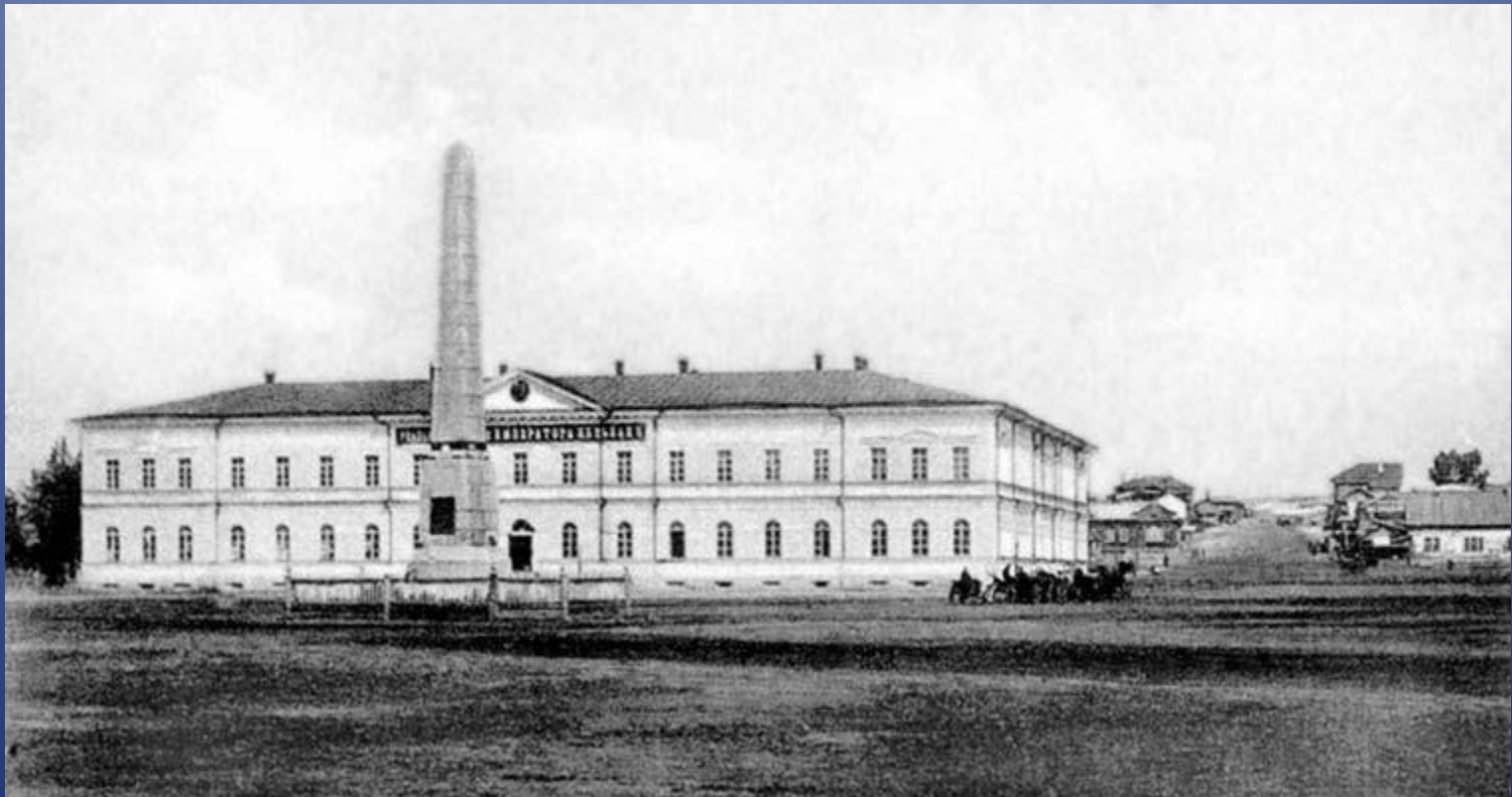




Akimphy Demidov, the son of the famous merchant and Tula citizen Nikita Demidov, started sending walkers and manufactures to Siberia in the search of furs and minerals. They found great reserves of copper ores.

Demidov square is one of the oldest areas of Barnaul. It is located in a historic city center.

The square is located between the streets of Polzunov, Pushkin and Red Army in the prospectus of the Central District.



So people honour the historical person .

Barnaul is not only administrative, but also an educational city.

In 2007 higher education in Barnaul is provided by nine public universities, which invite students not only from Altai, but from other cities and countries.



The Altai State Agrarian University



Altai State Pedagogical Academy



**Barnaul Institute of Law,
Ministry of Internal Affairs of Russia**



Altai Economics and Law Institute

Barnaul is a cultural centre

There is a lot of fun: cinema houses, theatres, different youth clubs



The third station -
famous people

Ivan Ivanovich Polzunov

He was born in March 14 1728 Ekaterinburg and lived and worked in Barnaul. Ivan Ivanovich is an outstanding Russian inventor, creator of the first steam machine in Russia.



Lieutenant General Mikhail Timofeyevich Kalashnikov

He was born in November 10, 1919 in Russia's southern Altai region.

Mikhail Timofeyevich is a Russian small arms designer, most famous for designing the AK-47 assault rifle.



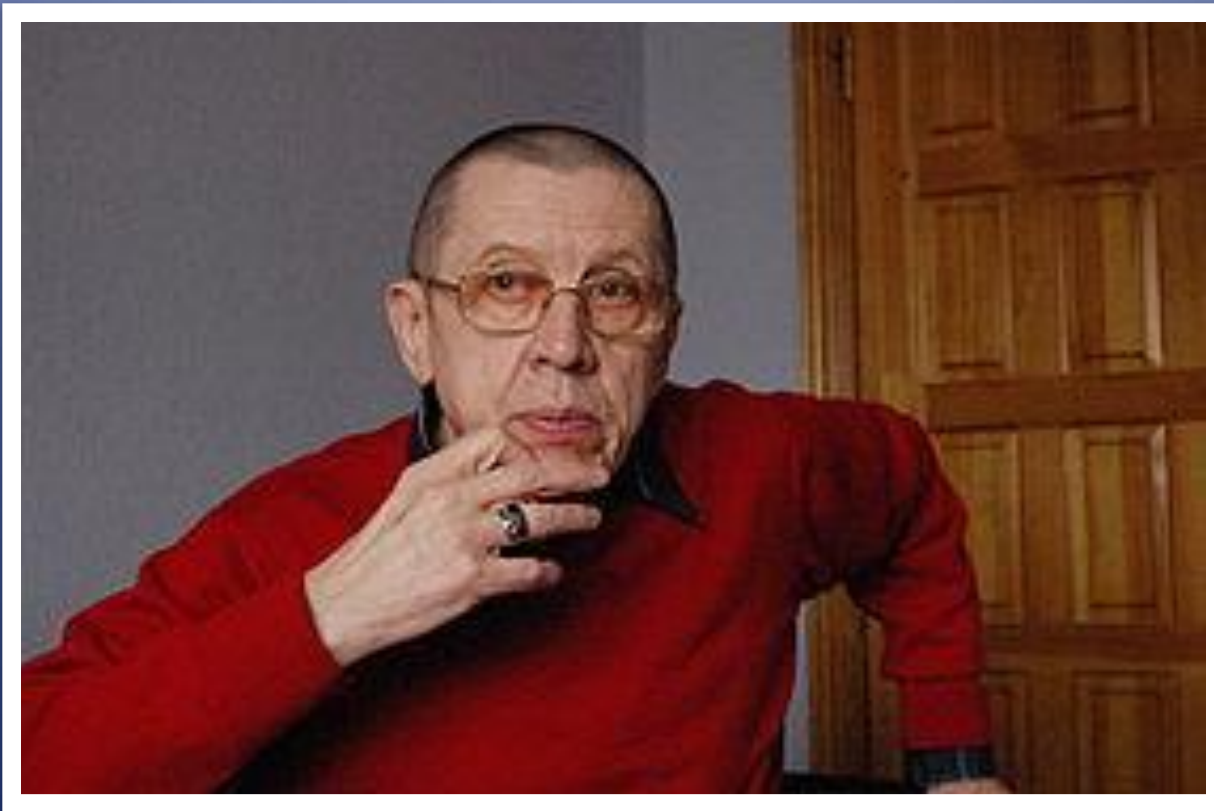
Mikhail Evdokimov

He was born in December 6 1957, in Stalinsk . Mikhail Sergeevich was an actor of the bandstand, humorist, movie actor, well-earned actor of the RF, since April 2004 to August 2005 chapters to administrations of the Altai region.



Valery Zolotukhin

He was born in June 21, 1941, Bystry Istok, the Altai Region. Valery is a Russian and Soviet film and theater actor, National Artist of Russia.



Altai is one of the best land in Russia. It is rich .
If you were born here or visited it once you will
never forget it.