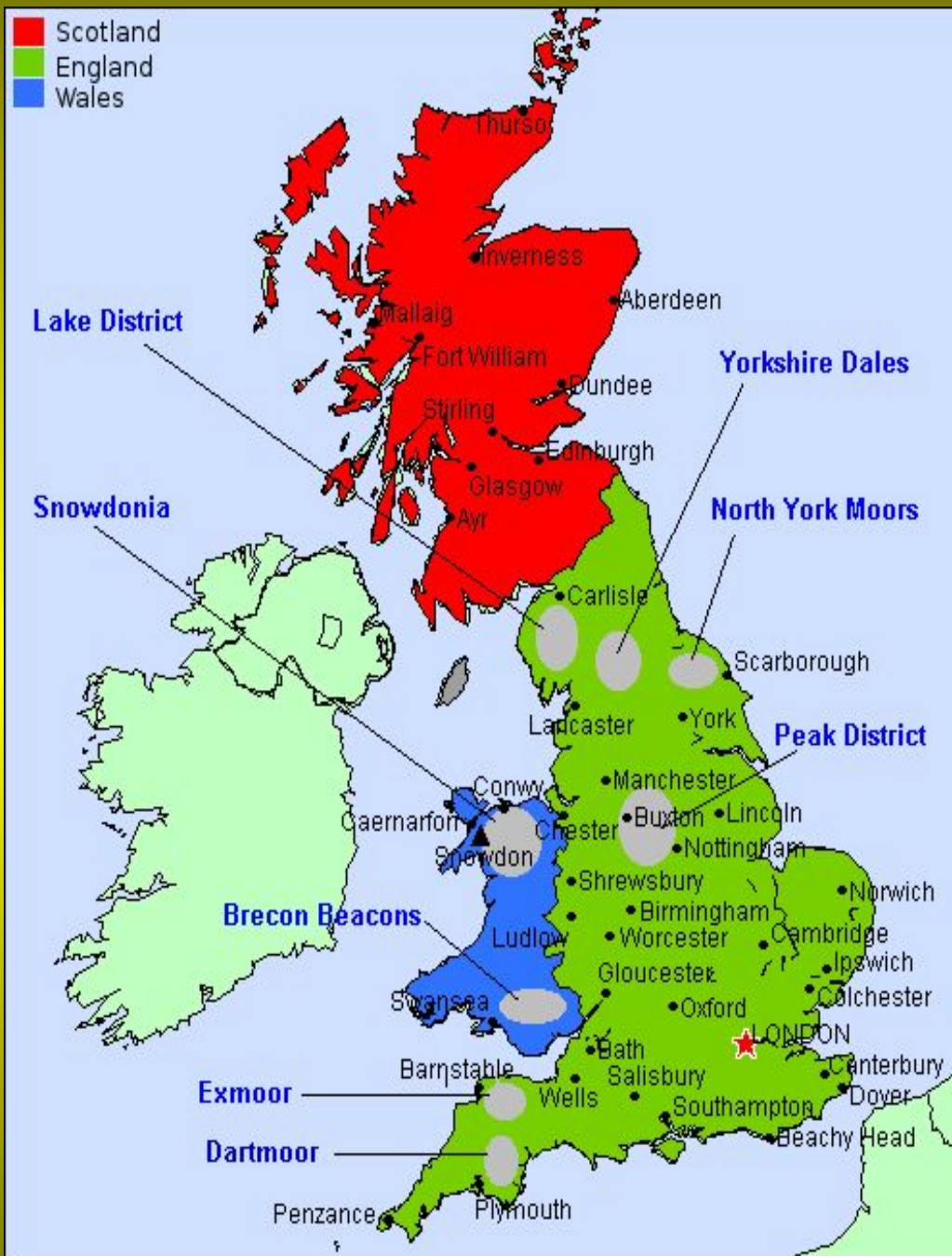


ENGLAND





Few Facts About England

England is part of the United Kingdom which is made up of England, Northern Ireland, Scotland and Wales.

England is part of the European Union. The capital of England is London.

The money used is called the pound.

The population of England is 60,776,238.

The language spoken is English.



England's Important People

- Famous authors - Beatrix Potter, Roald Dahl and J.K. Rowling



- William Shakespeare - famous for writing plays



- [Queen Elizabeth and the royal family](#)

- The Beatles - famous singing group who
- became popular in the 1960s



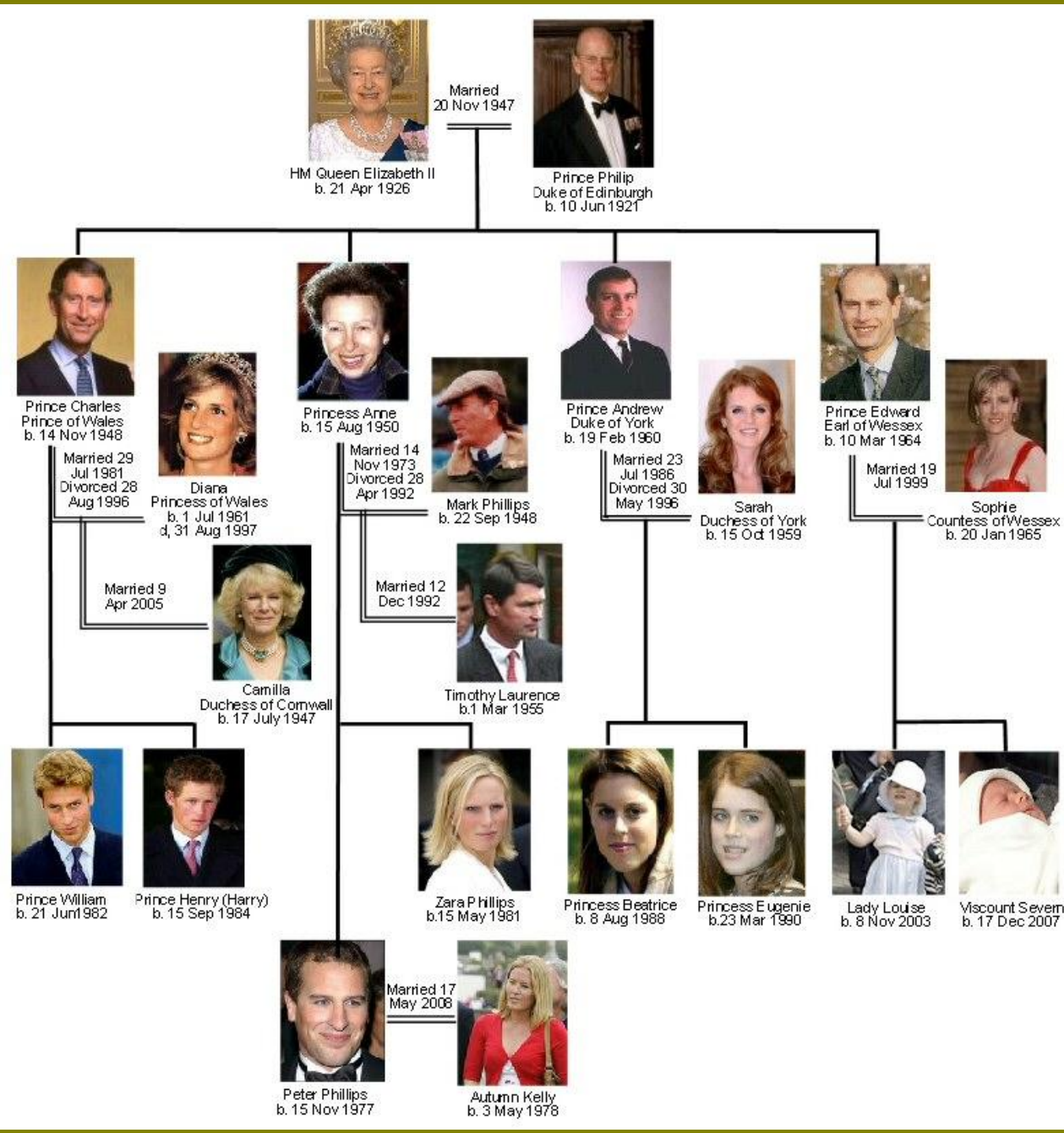
David
Beckam



Daniel
Radcliff

The royal family







Places of interest in England

London



Houses of Parliament

- Seat of the British parliament
- Big Ben – part of Houses of Parliament



Buckingham Palace

- Residence of the queen
- Change of the Guard every day, takes 45 minutes



Tower of London

- Founded by William the Conqueror in 1066-7
- royal palace and fortress, prison and place of execution, mint, arsenal, menagerie and jewel house.



- Guarded by the Beefeaters
- Their number is 36
- Ravens



St, Paul's Cathedral

- the masterpiece of Sir Christopher Wren.
- Built between 1675 and 1710
- Whispering gallery



Westminster Abbey

- many kings, queens, poets, writers and other famous inhabitants of the UK are buried there



Windsor



- one of three official residences of The Queen
- the largest inhabited castle in the world and the oldest in continuous occupation



Oxford

- The oldest university in England
- Founded in 13th century




- One of the highlights of Oxford is the Radcliffe Camera on Radcliffe Square
- designed by James Gibbs in the English Baroque style



Stonehenge



- 
- Located on Salisbury plain
 - Built approximately in 4th millennium B.C.
 - Calendar? Ritual place? Astronomical clock?

Winchester

- the most important city in England until the eleventh century



The English Lake District National Park



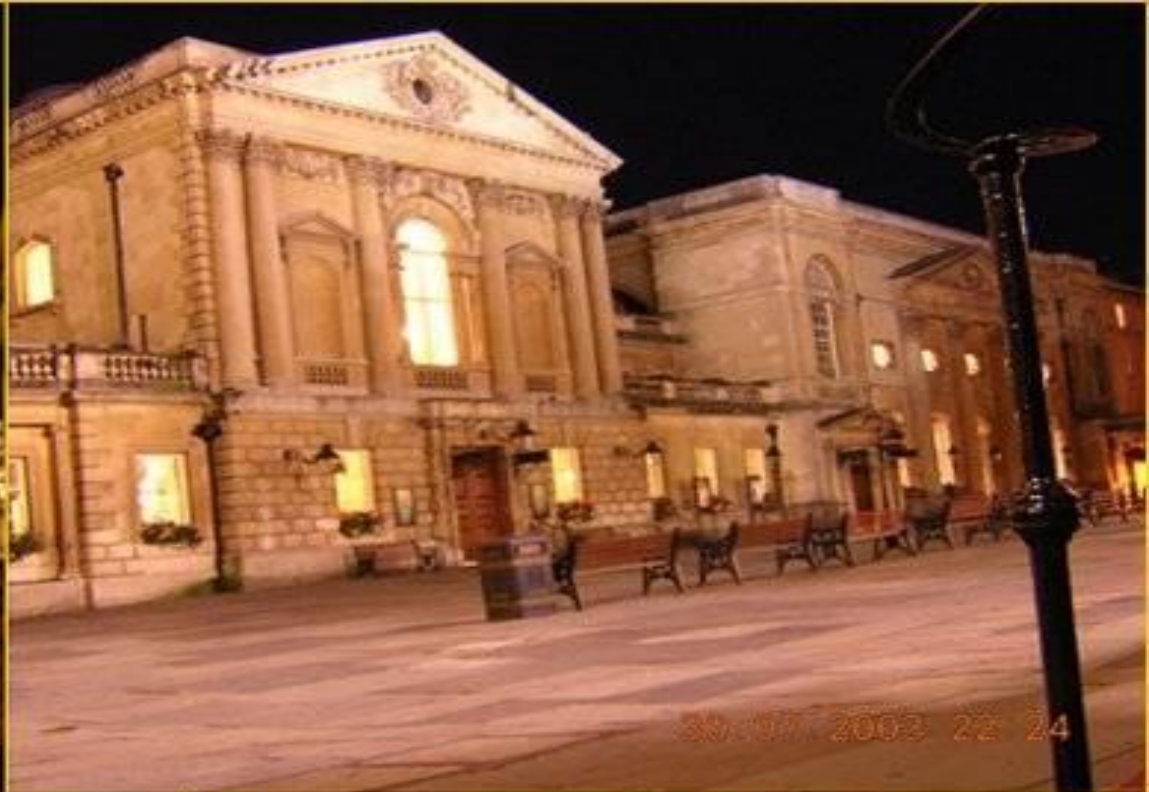
- 885 square miles in size
- 1800 miles of footpaths



Bath

- Built by Romans
- Few kilometres southwards from Bristol
- Gothic cathedral





What the English Like to Eat

- Fish and chips
- Tea and biscuits



Roast Meats (cooked in the oven for about two hours)

