

ENGLAND

England is the largest part of the UK.



The capital of England is London



Saint Patron of England is St. George



The symbol of England is a red rose



The Regions of England

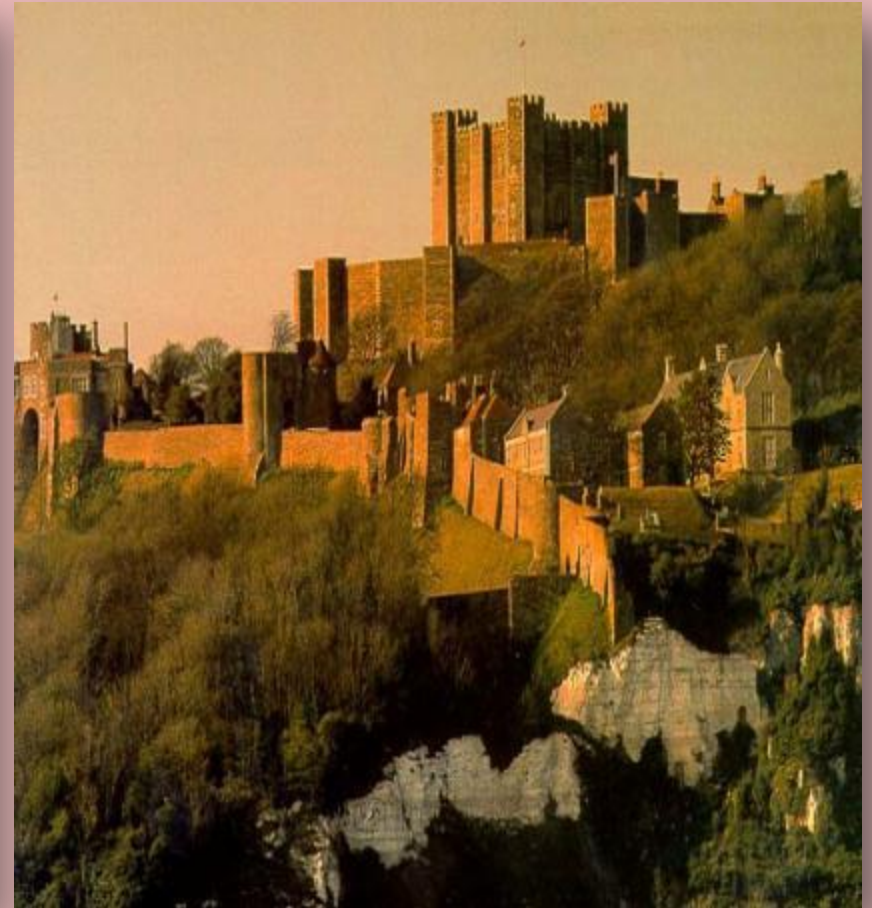
This part includes several regions:

- The Southeast
- The Southwest
- East Anglia
- The Midlands
- The North of England



The Southeast

Such historical cities as Brighton and Dover are situated here.



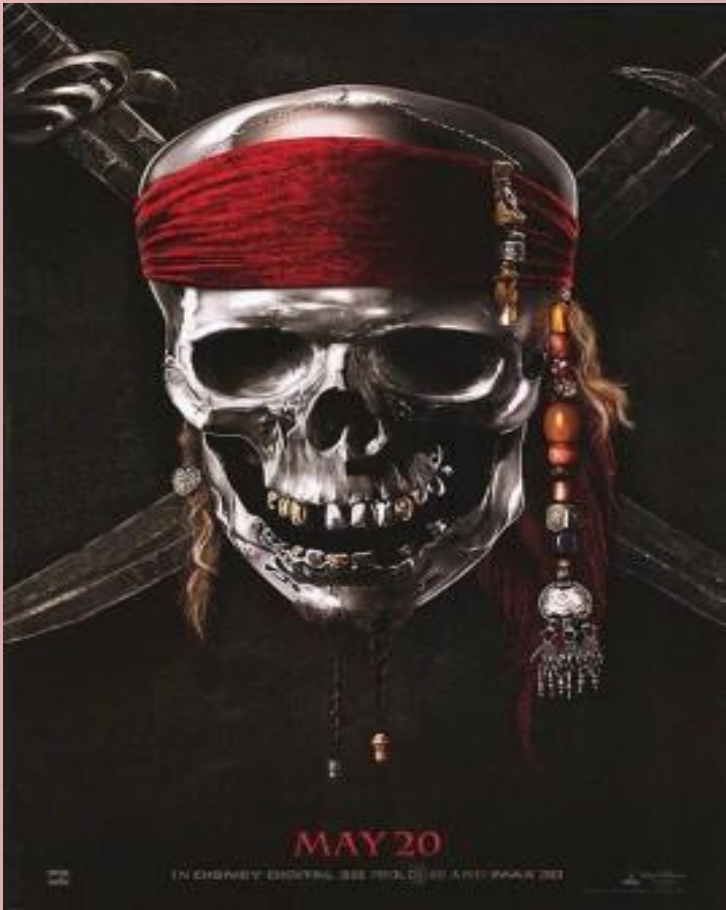
The Southeast

The County of Kent known as the garden of England is situated in the Southeast.



The Southwest

It is famous for its farming, but in the past it used to be known for its pirates.



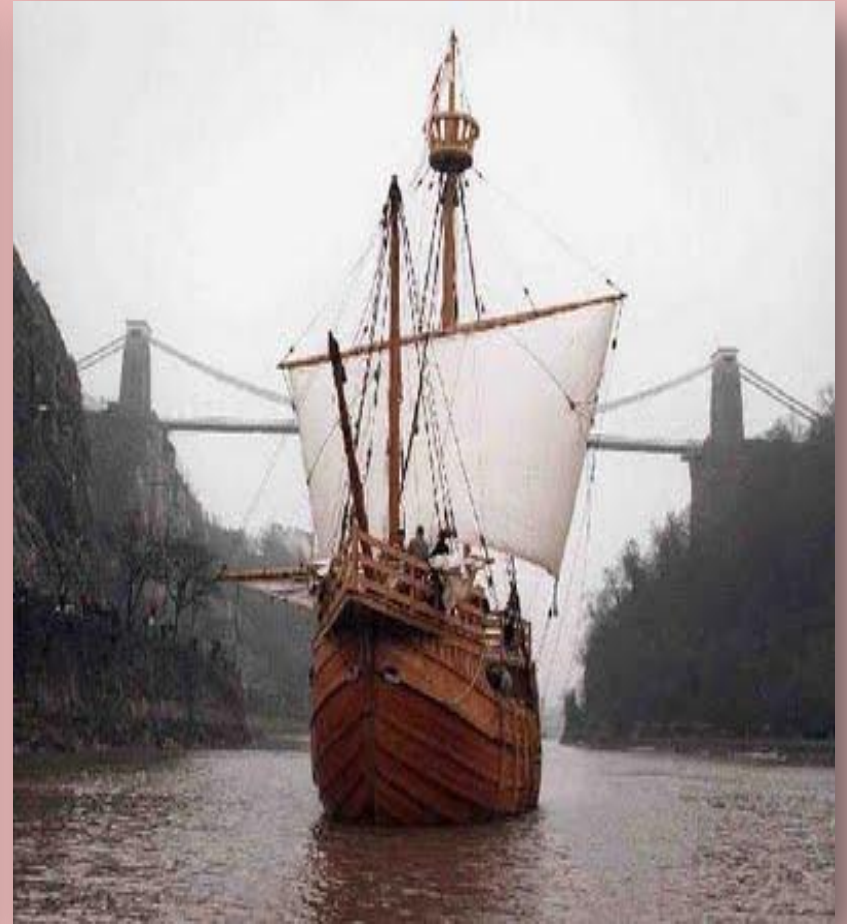
The Southwest

Stonehenge, a pre-historic monument is located here.



The Southwest

Bath and Bristol are located here too.



The Southwest

“Land’s End” is the most westerly point of Great Britain.



East Anglia

Cambridge, where the second oldest British university was founded, is in East Anglia.



The Duchess of Cambridge

Kate Middleton was given the title of the Duches of Cambridge



East Anglia

Oliver Cromwell, a famous British general and politician, was born here.



The Midlands

Manchester, Liverpool and Sheffield are situated in the heart of England, which is the Midlands.



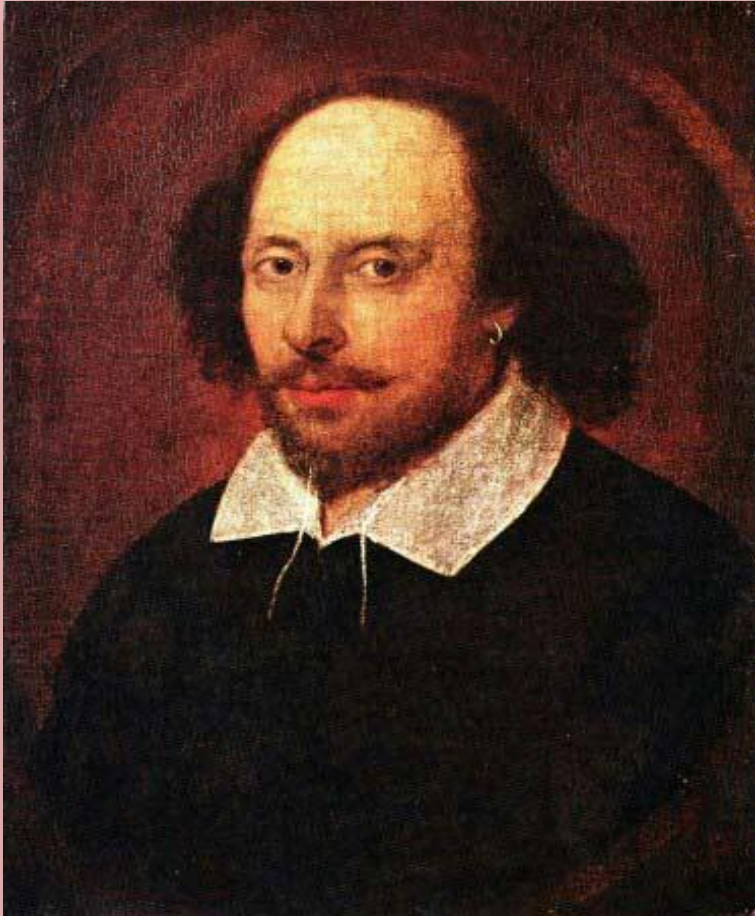
The Midlands

Stratford-upon-Avon, Shakespeare's birthplace, is popular with tourists.



The Midlands

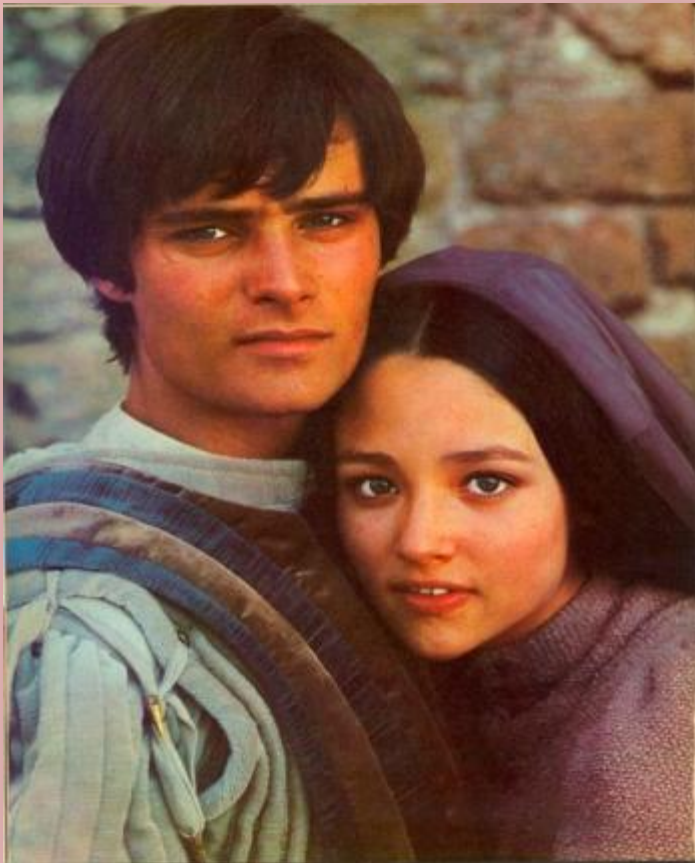
William Shakespeare is one of the world's famous writers, poets and playwrights.



Romeo and Juliet

It's one of the most famous tragedies by W. Shakespeare.

The film of Franco Zeffirelli



The film of Baz Luhrmann

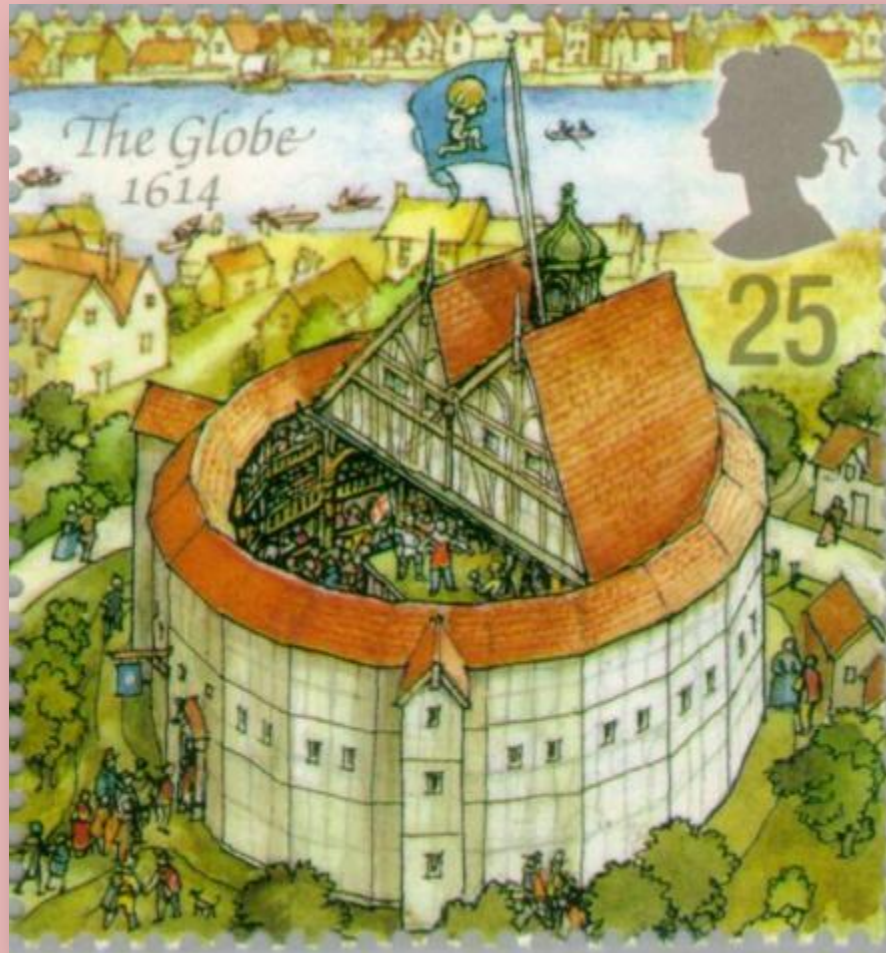


The Globe Theatre



W. Shakespeare wrote a lot of plays for the theatre. Most of his plays were performed in the New Globe Theatre.

The Globe Theatre in Shakespeare's time.



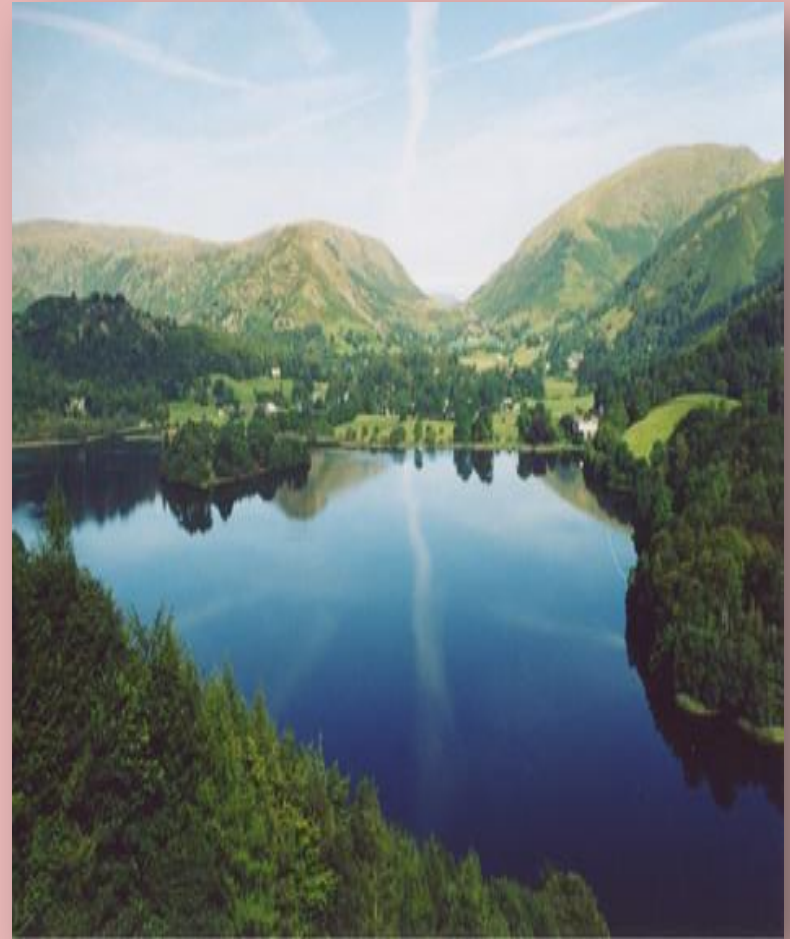
The Midlands

Oxford, another famous university city, is also connected with English culture.



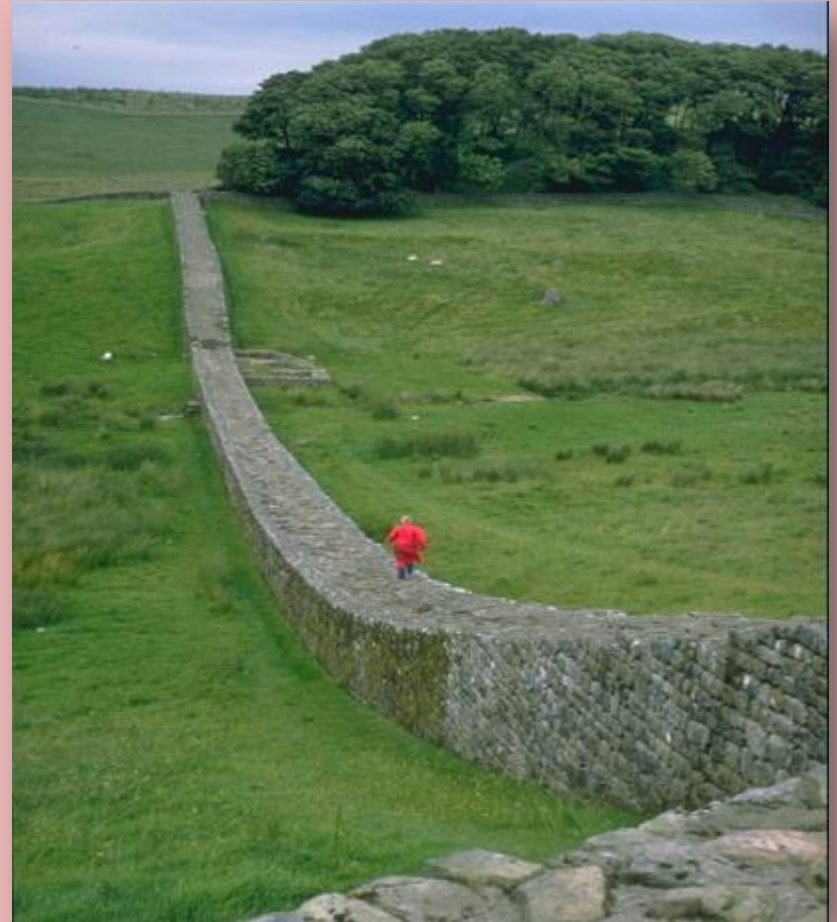
The North of England

The Lake District attracts crowds of tourists.



The North of England

Tourists come to see the ruins of the Roman Hadrian's Wall.



Использованные материалы

- Картинки из Google и Yandex.
- Учебник О.В. Афанасьевой, И.В. Михеевой для VI класса школ с углубленным изучением английского языка, лицеев и гимназий.