

Johnny Depp

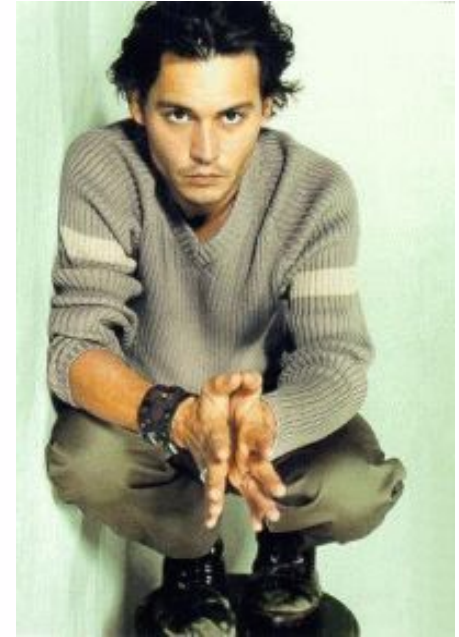


Biography

Actor, director, musician. Born **John Christopher Depp II** in Owensboro, Kentucky, on June 9, 1963. Raised in Florida, **Depp** dropped out of school at age 17 in hopes of becoming a rock musician. He fronted a series of garage bands, including The Kids, which was once opened for Iggy Pop.

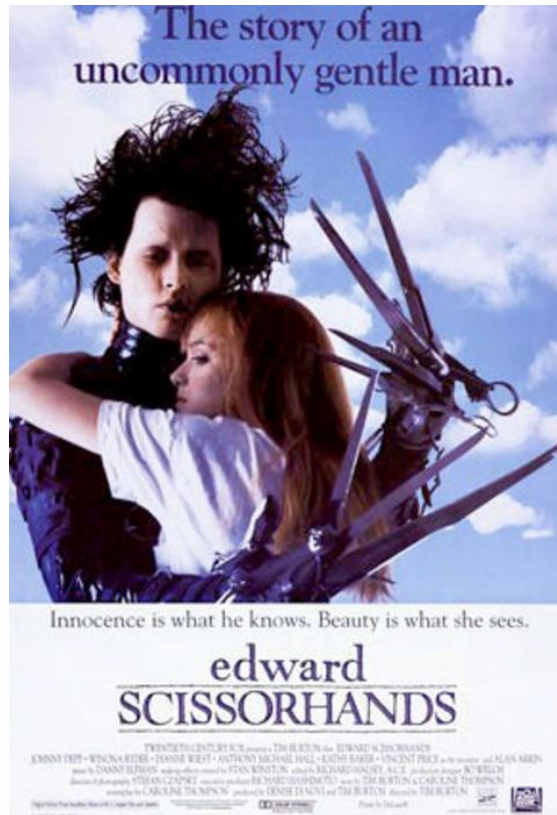
Depp got into acting after a visit to LA with his former wife, who introduced him to actor Nicolas Cage. He made his film debut in 1984's *A Nightmare on Elm Street*. In 1987, he leapt into stardom when he replaced Jeff Yagher in the role of undercover cop Tommy Hanson in the popular Canadian-filmed TV series *21 Jump Street*. In 1990, after numerous roles in teen films, **Depp** received an opportunity to exhibit his exhausting versatility in the title role of Tim Burton's fantasy *Edward Scissorhands*.





Following the film's success, **Depp** carved a niche for himself as a serious, somewhat dark, idiosyncratic performer, consistently selecting roles that surprise critics and audiences alike. He continued to gain critical acclaim and increasing popularity for his work, most notably in 1993's *Benny & Joon* and in the title role of *What's Eating Gilbert Grape* in 1993, which cast him as a young man dissatisfied with the confines of his small-town life. In 1994, he re-teamed with Burton in the lead role of *Ed Wood*.

Popular films with Johnny Depp



Edward Scissorhands (1990)



Charlie and the Chocolate Factory (2005)

Pirates of the Caribbean (2005 – 2007)



The Tourist (2010)



Awards



Premium channel «MTV», 2008
Winner:

Premium channel «MTV», 2007

Winner:

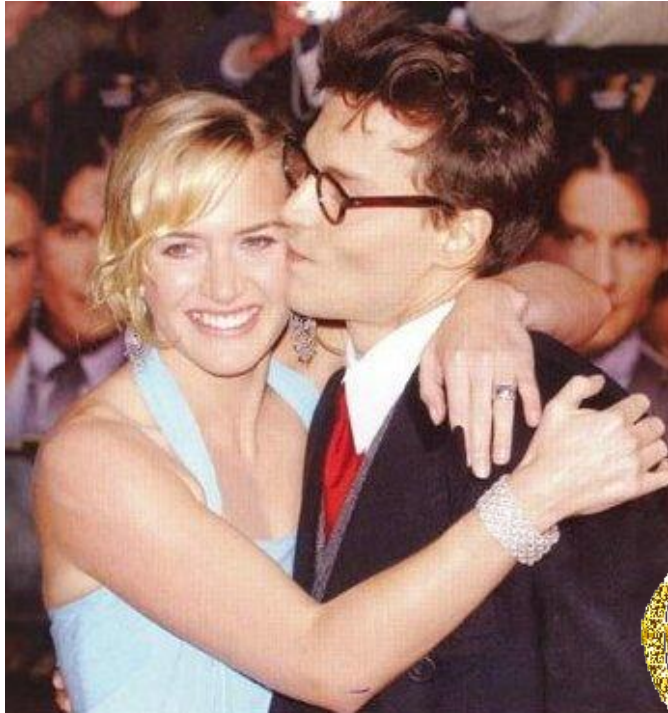
- Best actor or actress ("Pirates of the Caribbean: Dead Man's Chest")



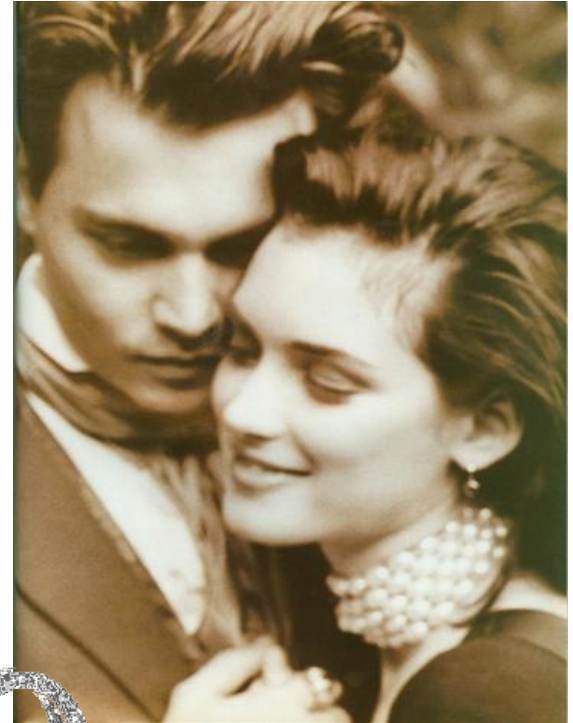
- Best Villain ("Sweeney Todd: The Demon Barber of Fleet Street")



Women Johnny Depp



Lori Allison



**Vaynonoy
Ryder**





Kate Moss



**Vanessa
Paradis**





The End