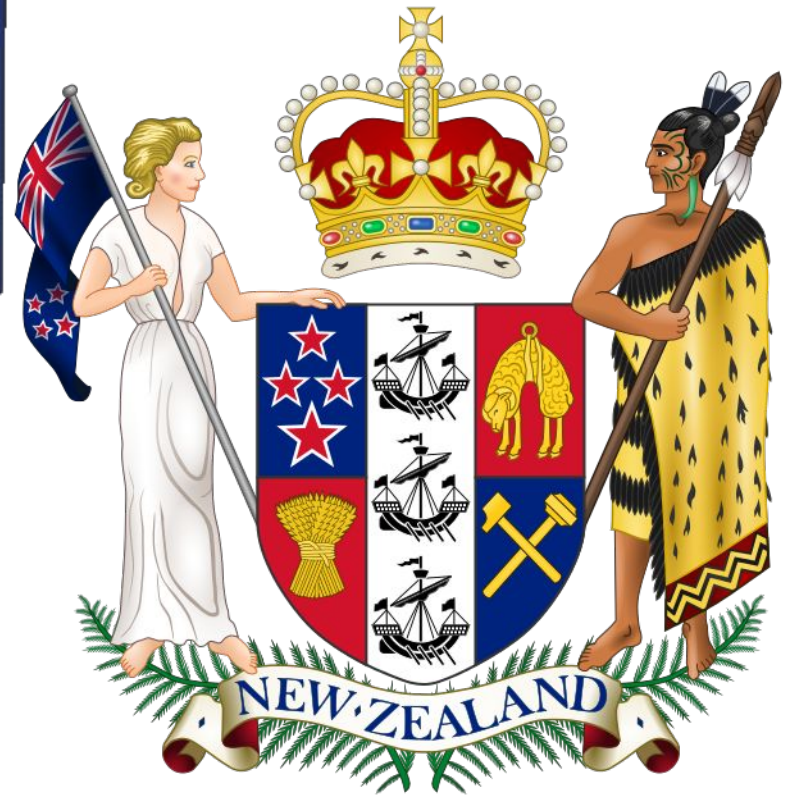


# Flag and Emblem of New Zealand



Independence Day is celebrated  
on September, 26



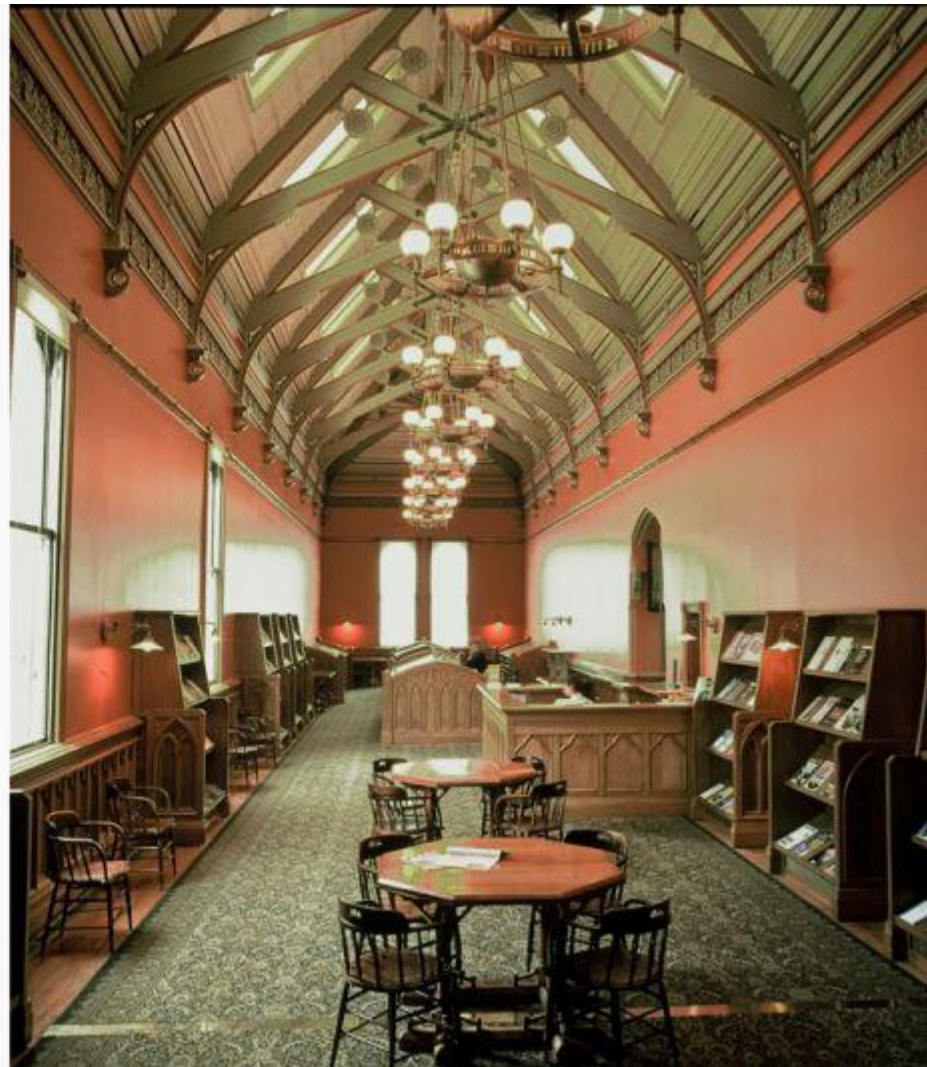


Government type is parliamentary democracy. Administrative division is the following: 93 counties, 9 districts, and 3 town districts.





**New Zealand Parliament Refurbishment**



**New Zealand Parliament Refurbishment**



Legal system is based on the English law, with special land legislation and land courts for Maoris.



**Since 6 February  
1952 the chief of the  
state is Queen  
Elizabeth II,  
represented by  
Governor General  
Dame Silvia  
Cartwright since 4  
April 2001.**



**Since 10 December 1999, the Head of the government is Prime Minister Helen Clark and Deputy Prime Minister James Anderton.**






**Since 1984 the government has accomplished major economic restructuring, transforming New Zealand from an agrarian economy to a more industrialized, free market economy that can compete globally.**



**New Zealand is heavily dependent on trade — particularly in agricultural products.**



A scenic landscape of a green valley with sheep grazing, set against a backdrop of misty mountains. The foreground is a lush green field with two white lambs standing prominently. The middle ground is filled with a large flock of sheep grazing on the grass. The background features steep, rugged mountains with some mist or low clouds hanging in the valleys between them. The sky is bright and clear.

**The main industries are mining, food processing, wood and paper products, textiles, machinery, transportation equipment.**

New Zealand's currency is New Zealand dollar.

