

# HALLOWEEN

*Сычева Ольга Михайловна,  
учитель английского языка  
ГОУ СОШ №1168 г.Москвы*



**Halloween is coming!**

**Take the quiz!**

**Get set to shiver**





- *What day is Halloween celebrated on?*
- *October 30*
- *October 31*
- *November 1*
- *March 31*





- *Which vegetable was originally used to make jack-o'-lanterns?*
- **Spinach**
- **Celery**
- **Carrots**
- **Turnips**



# Halloween



- *What colours are associated with Halloween?*
- *Red and green*
- *Orange and black*
- *Yellow and blue*





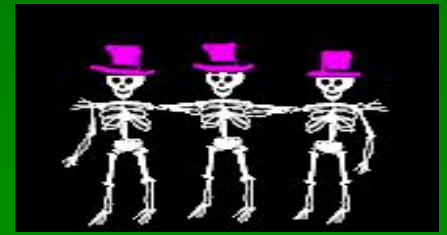
- *Which animals are the most commonly associated with witches?*
- **Black cat**
- **Red panda**
- **Green frog**
- **Yellow dog**





- *What sort of supernatural being is Dracula?*
- **Goblin**
- **Wizard**
- **Vampire**
- **Banshee**

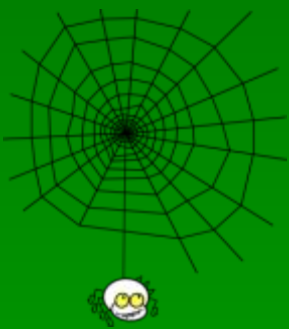




- *What is worn around the neck to keep vampires away?*
- *Garlic*
- *Pepper*
- *Onion*







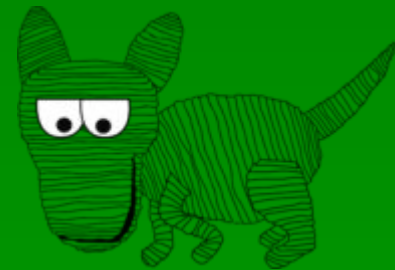
■ *If you saw a mummy chasing you in Halloween, which country would you guess it had come from?*

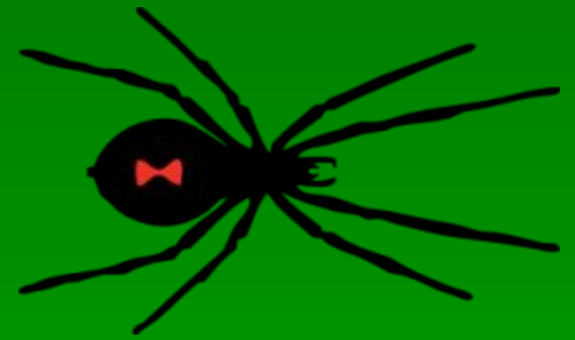
■ **China**

■ **Great Britain**

■ **Egypt**

■ **Transylvania**





- *What does a witch use for transport?*
- *A hat*
- *A broomstick*
- *A motorbike*



# Trick Treat



- *What is a pumpkin?*
- *Animal*
- *Vegetable*
- *Mineral*
- *Fruit*





- *Which of these words is another word for “ghost”?*
- **Gnome**
- **Phoenix**
- **Sprite**
- **Phantom**



# Happy Halloween



- *В презентации использованы материалы сайта: <http://www.clker.com>*
- *<http://kids.nationalgeographic.com/>*

