



169

# *Holidays*

HAPPY HAUNTING



# Christmas in Great Britain



Every year there is a big Christmas tree in the centre of London, in...

Trafalgar Square

# Christmas in Great Britain

A very big Christmas tree in the centre of London is a present from ...

to the people of Great Britain.

the people of Norway



# Christmas in Great Britain

People put their present  
under the tree on ...

Christmas Eve





# In Britain, Santa Claus enters houses

- by climbing through the window
- by coming down the chimney
- through the front door.
- through the back entrance



# Christmas in Great Britain

Correspondence between the place and the things:

On the Christmas tree      Toys

Little colored lights

Under the Christmas tree      Colored balls

Stockings

Near beds      Presents



In the old Christmas Song, there are 12 days of Christmas. The first day of Christmas is

- 25th December
- 15th December
- 6th December



The background of the slide is white with several black musical notes and staves scattered around. There are two horizontal staves, one above and one below the central text box. Various musical notes, including eighth and quarter notes, are floating in the air.

## A 'carol' is

- a pie traditionally eaten on Christmas day
- a religious Christmas song
- a Christmas party with dancing

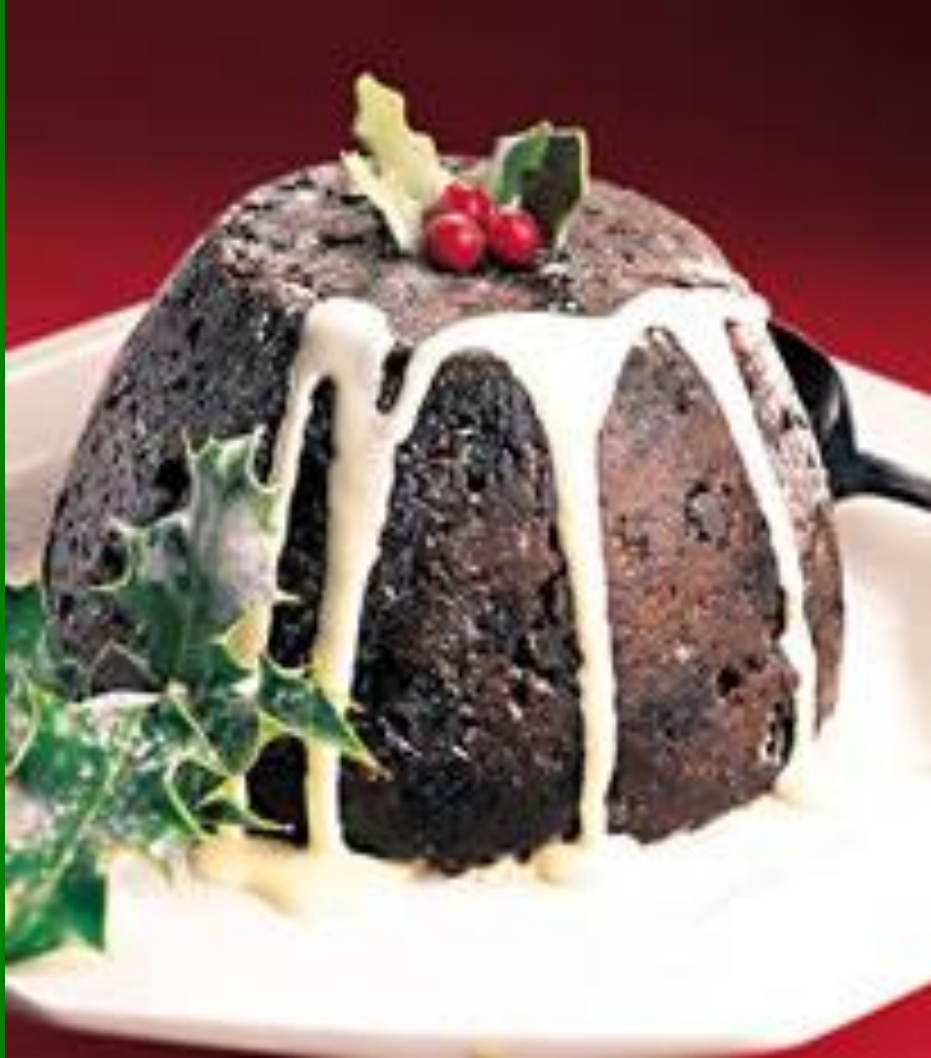


# Which of these would you NOT see on top of a British Christmas tree?

- a star
- a fairy
- Santa Claus



# A traditional Christmas pudding is made



- a week before Christmas
- on Christmas morning
- up to 3 months before Christmas

# dinner British families usually have

- Beef
- Turkey
- Chicken
- Apples
- Soup
- Salami



# Christmas in Great Britain

The correct order of events:

- For Christmas lunch people eat turkey, potatoes and vegetables.
- Then they have tea
- Then they have the Christmas pudding



# The correct chronological order is

- New year
- Mother's Day
- Easter
- Fool's Day



# Correspondence between English holidays and their dates.



*Christmas*

*in April*

*Easter*

*on the 31st of October*

*New Year*

*on the 25th of December*

*Mother's Day*

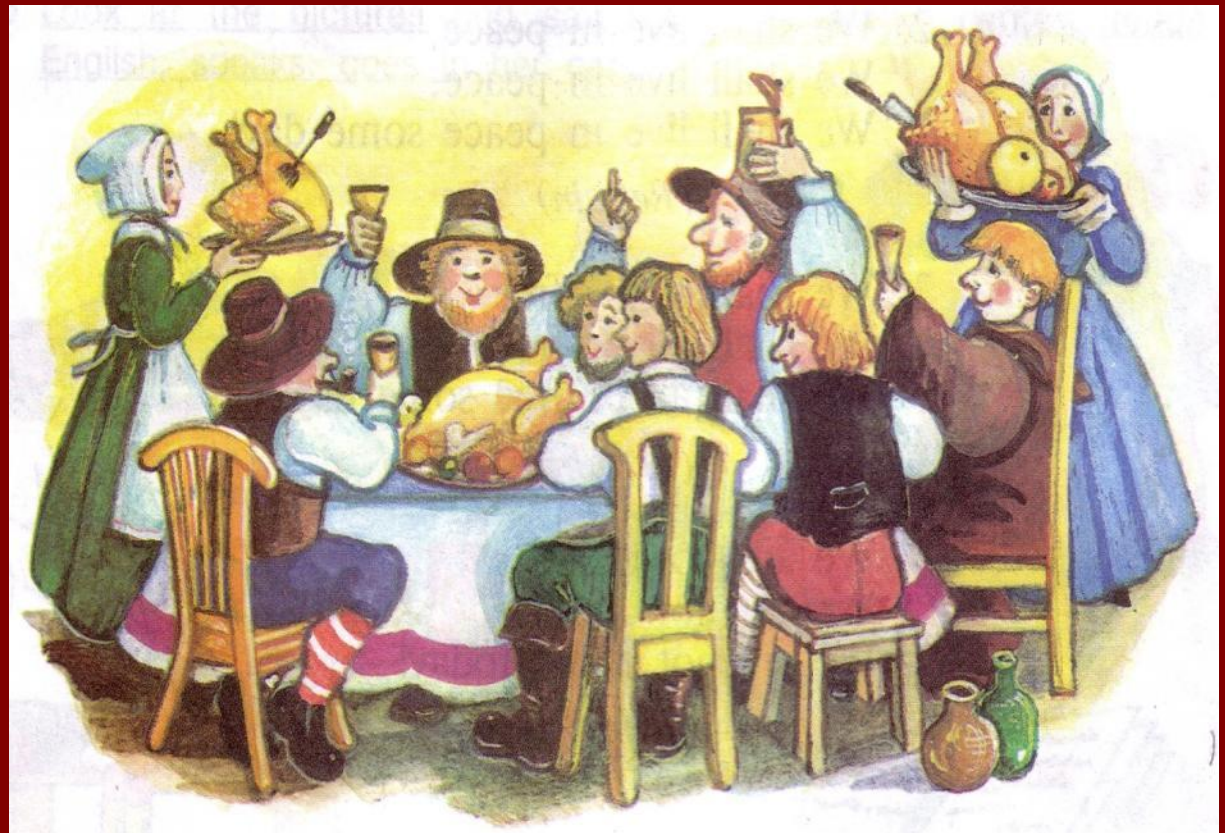
*on the 31st of  
December/  
1st of January*

*Halloween*

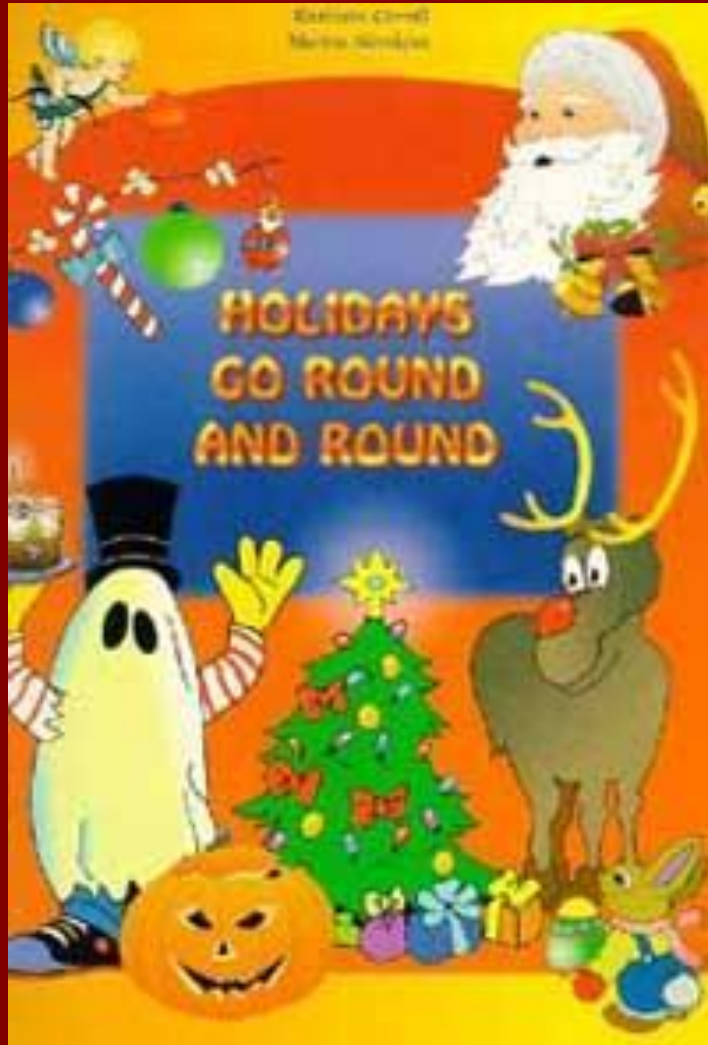
*on the 26th of March*

# 11. The traditional food of thanksgiving Day is ... .

- turkey-
- beef -
- pork -



5. People usually ... for the New Year.  
+ make promises



6. People call St.  
Valentine the ...  
+Saint of Love



### 3. Thanksgiving Day is an ... holiday

- a) British -
- b) French -
- c) American +
- d) Indian -



(COURTESY BOSTON PUBLIC LIBRARY)

# The English year

Children get chocolate  
Ester eggs or rabbits  
on

...

Easter Sunday





# The English year

**On Halloween  
people say:**

- **Trick or treat**
- **April Fool!**
- **Happy New Year**
- **Merry Christmas**



If you solve the rebuses you'll find what presents Santa Claus has in his bag

a)



b)



c)



d)

