



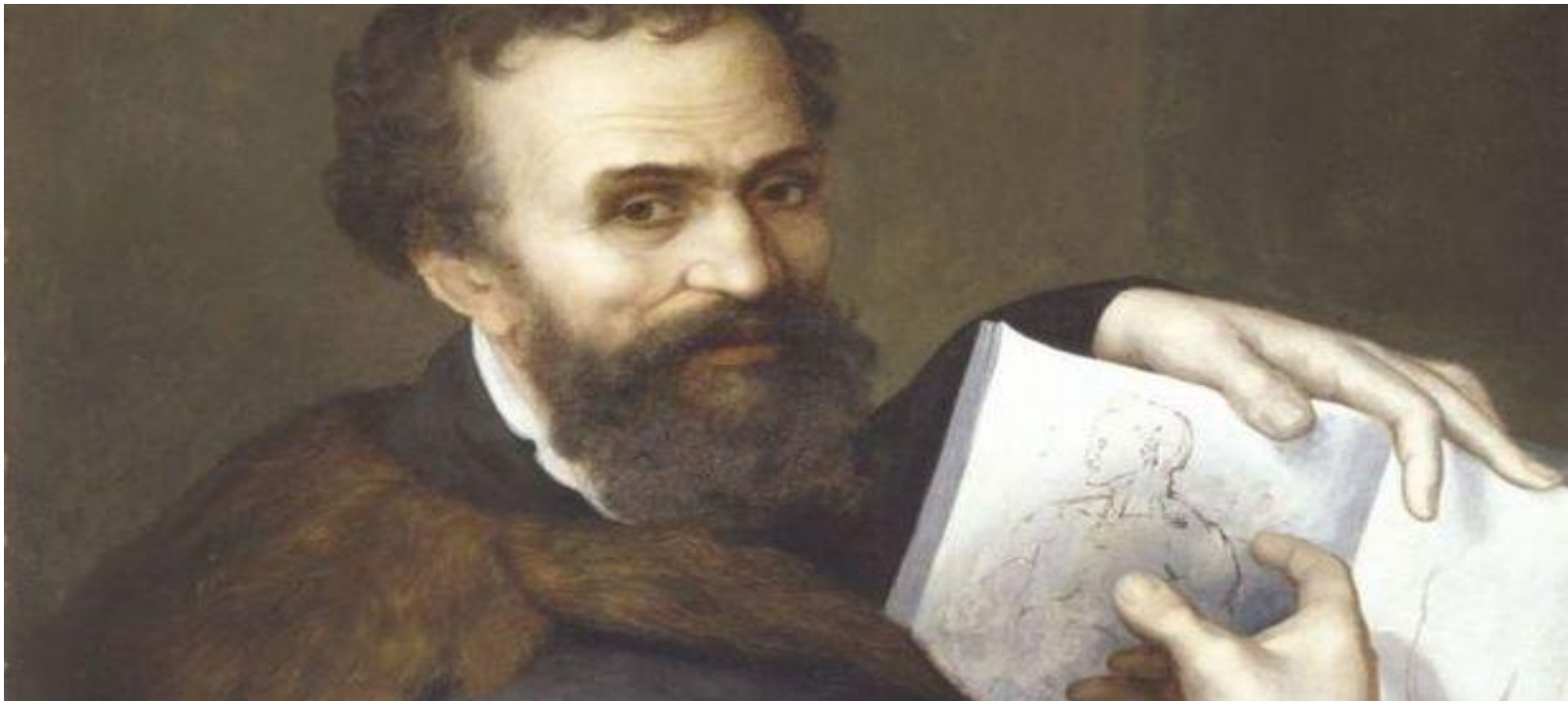
***MICHELANGELO DI LODOVICO
BUONARROTI SIMONI***

Michelangelo di Lodovico Buonarroti Simoni

(6 March 1475 – 18 February 1564), commonly known as Michelangelo, was an Italian sculptor, painter, architect, poet, and engineer of the High Renaissance who exerted an unparalleled influence on the development of Western art. Despite making few forays beyond the arts, his versatility in the disciplines he took up was of such a high order that he is often considered a contender for the title of the archetypal Renaissance man, along with his fellow Italian Leonardo da Vinci.



Michelangelo was considered the greatest living artist in his lifetime, and ever since then he has been held to be one of the greatest artists of all time. A number of his works in painting, sculpture, and architecture rank among the most famous in existence. His output in every field during his long life was prodigious; when the sheer volume of correspondence, sketches, and reminiscences that survive is also taken into account, he is the best-documented artist of the 16th century.



Two of his best-known works, the Pietà and David, were sculpted before he turned thirty.

Pietà



David



Despite his low opinion of painting, Michelangelo also created two of the most influential works in fresco in the history of Western art:

- *The Last Judgment*, or *The Last Judgement* is a fresco by the Italian Renaissance master Michelangelo executed on the altar wall of the Sistine Chapel in Vatican City. It is a depiction of the Second Coming of Christ and the final and eternal judgment by God of all humanity. The souls of humans rise and descend to their fates, as judged by Christ surrounded by prominent saints including Saints Catherine of Alexandria, Peter, Lawrence, Bartholomew, Paul, Sebastian, John the Baptist, and others.



- The Sistine Chapel ceiling, painted by Michelangelo between 1508 and 1512, is a cornerstone work of High Renaissance art.

The ceiling is that of the large Papal Chapel built within the Vatican between 1477 and 1480 by Pope Sixtus IV after whom it is named, and was painted at the commission of Pope Julius II. The chapel is the location for papal conclaves and many important services.



In his lifetime he was also often called Il Divino ("the divine one"). One of the qualities most admired by his contemporaries was his *terribilità*, a sense of awe-inspiring grandeur, and it was the attempts of subsequent artists to imitate [4] Michelangelo's impassioned and highly personal style.





WORKS

- ***Madonna and Child***

The Madonna of the Steps is Michelangelo's earliest known work. While the Madonna is in profile, the easiest aspect for a shallow relief, the child displays a twisting motion that was to become characteristic of Michelangelo's work. The painting heralds the forms, movement and colour that Michelangelo was to employ on the ceiling of the Sistine Chapel.





- *Male figure*



Bacchus by Michelangelo,
early work (1496–97)



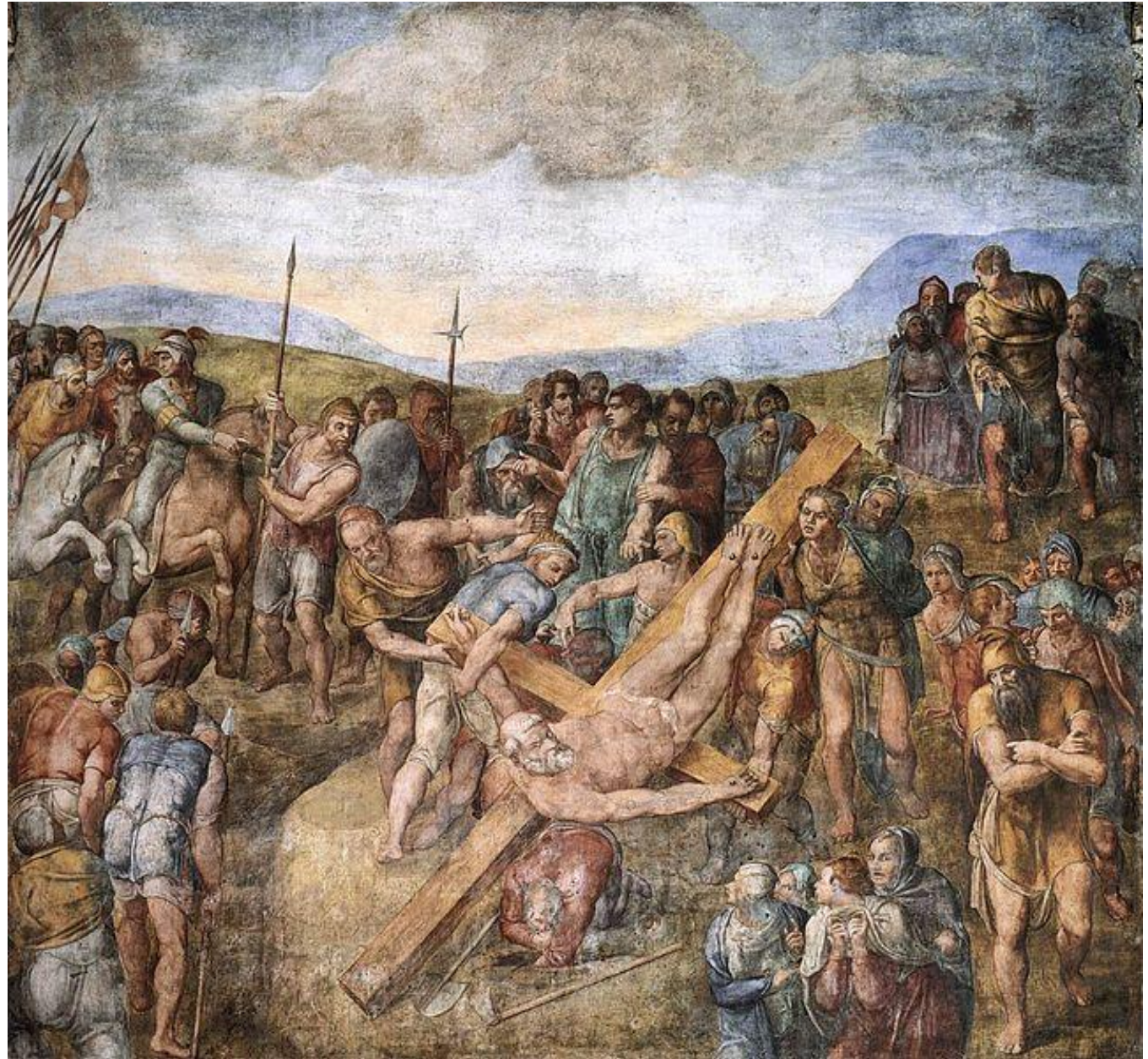
Angel by Michelangelo, early work (1494–95)

- *Figure compositions*

Michelangelo's relief of the Battle of the Centaurs, created while he was still a youth associated with the Medici Academy, is an unusually complex relief in that it shows a great number of figures involved in a vigorous struggle.

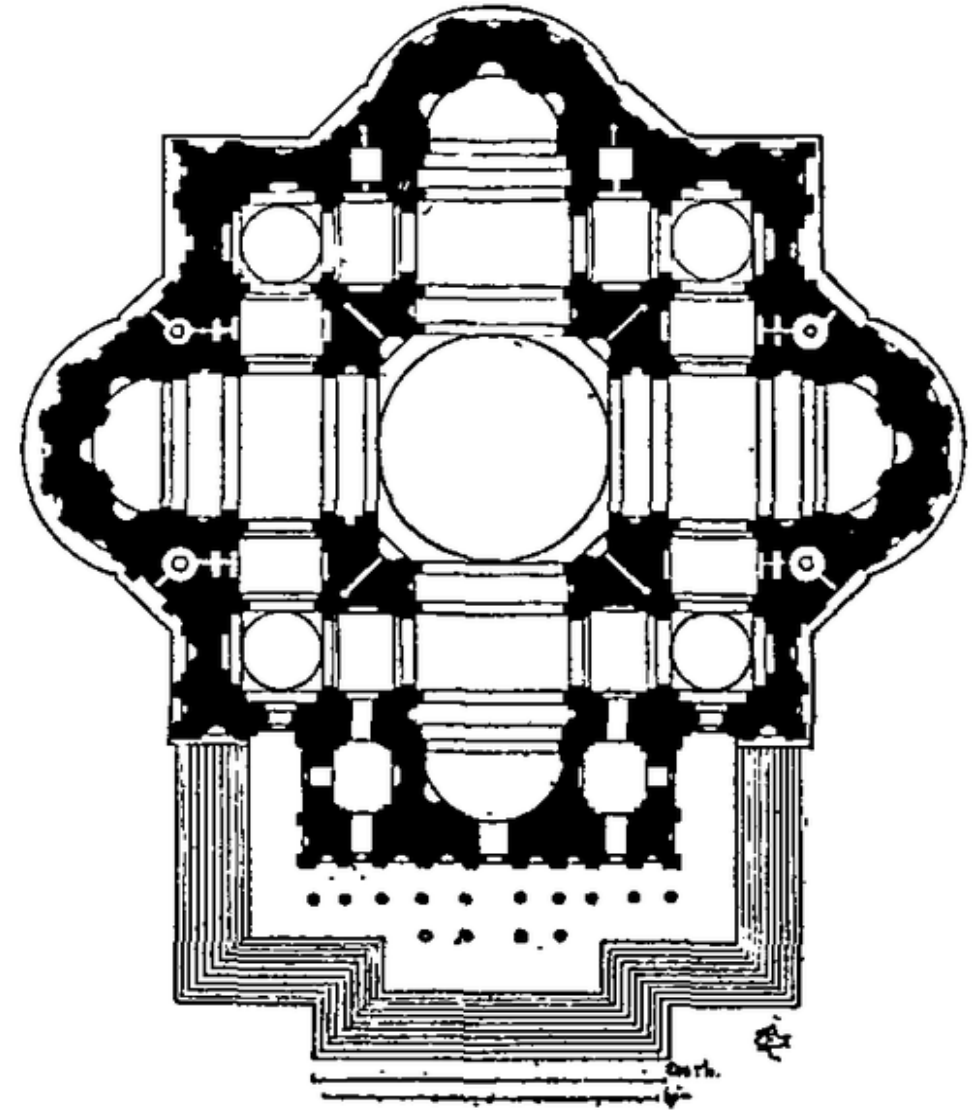
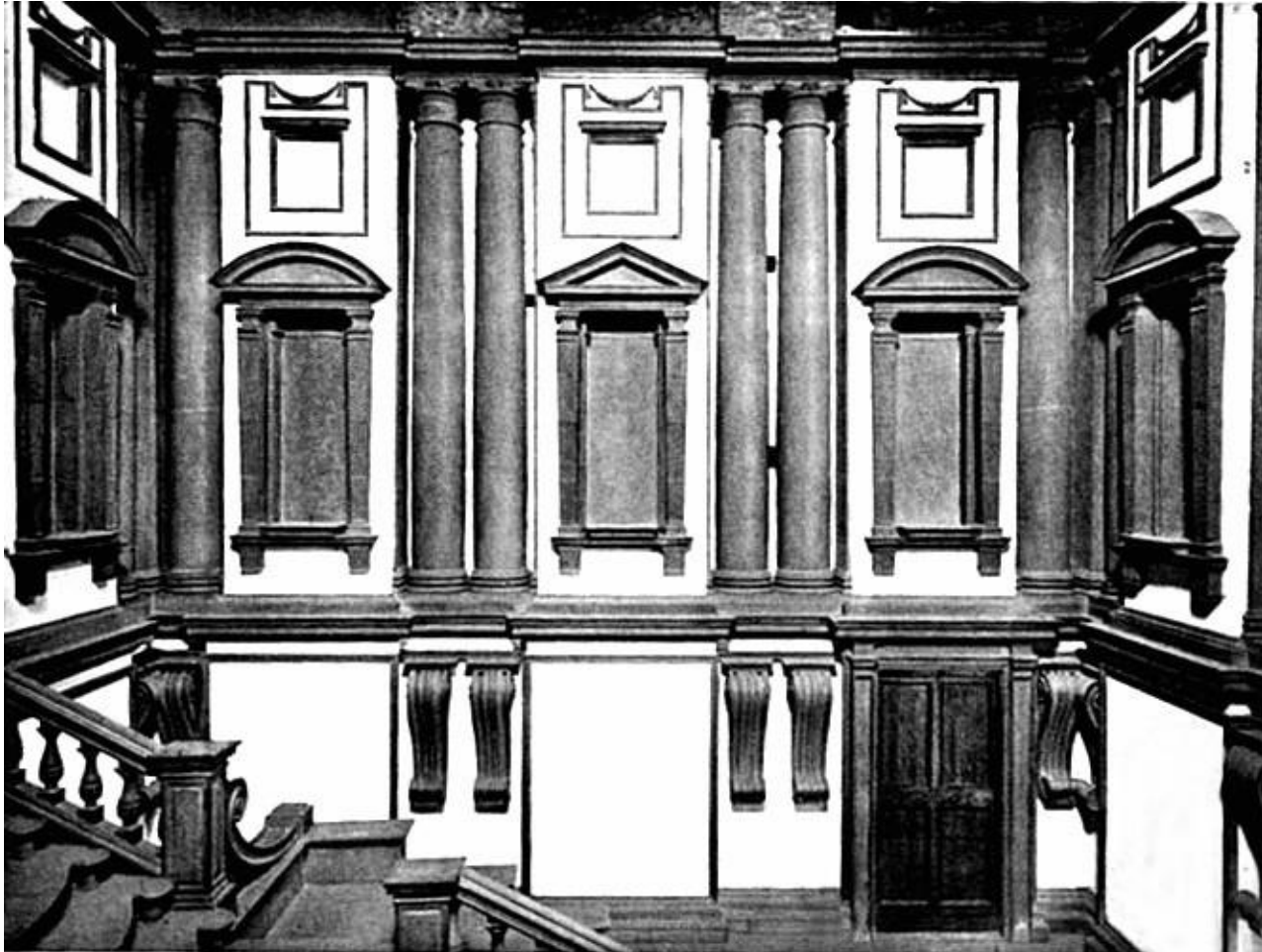


In the Crucifixion of Peter soldiers busy themselves about their assigned duty of digging a post hole and raising the cross while various people look on and discuss the events. A group of horrified women cluster in the foreground, while another group of Christians is led by a tall man to witness the events. In the right foreground, Michelangelo walks out of the painting with an expression of disillusionment.



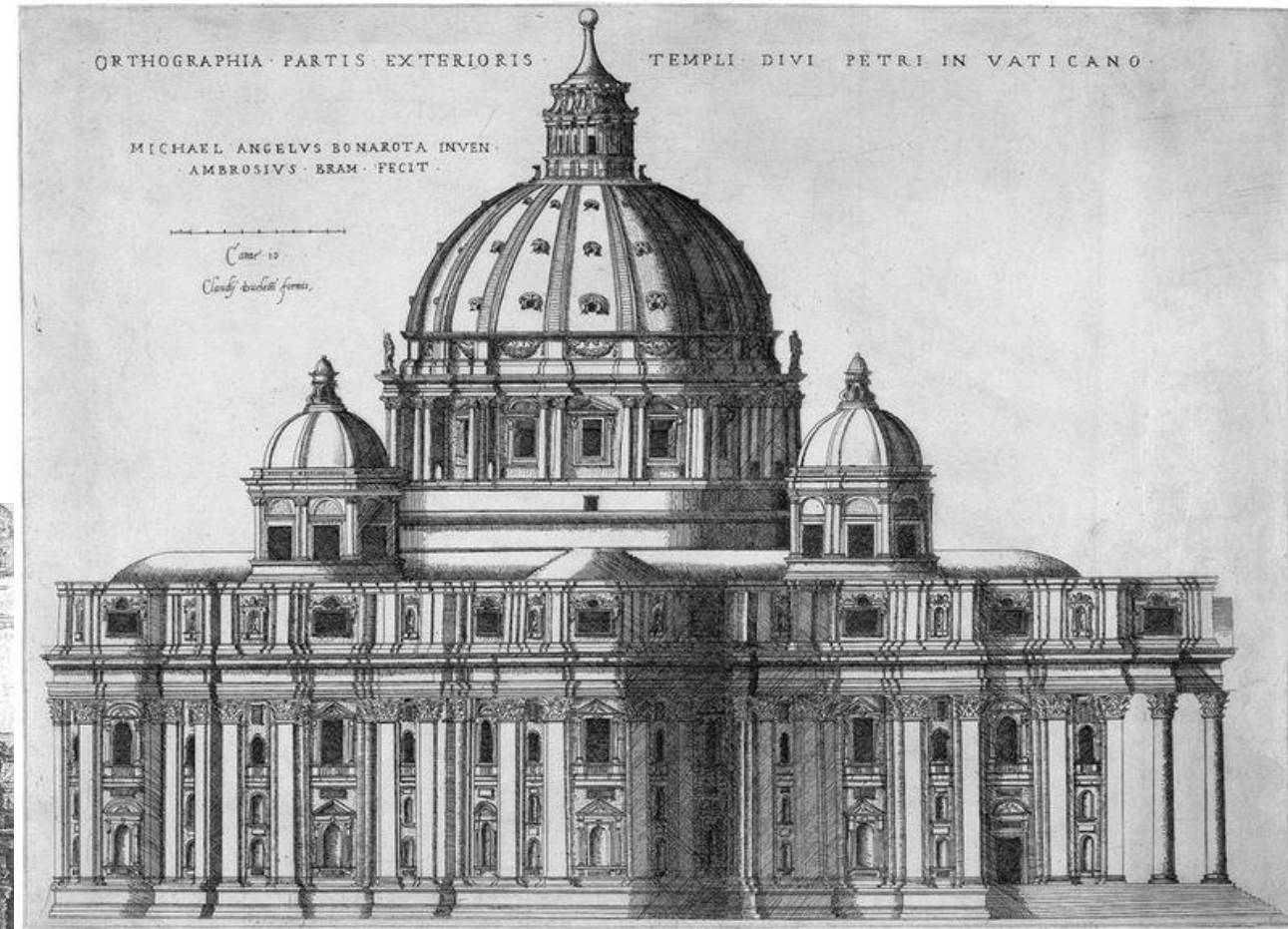
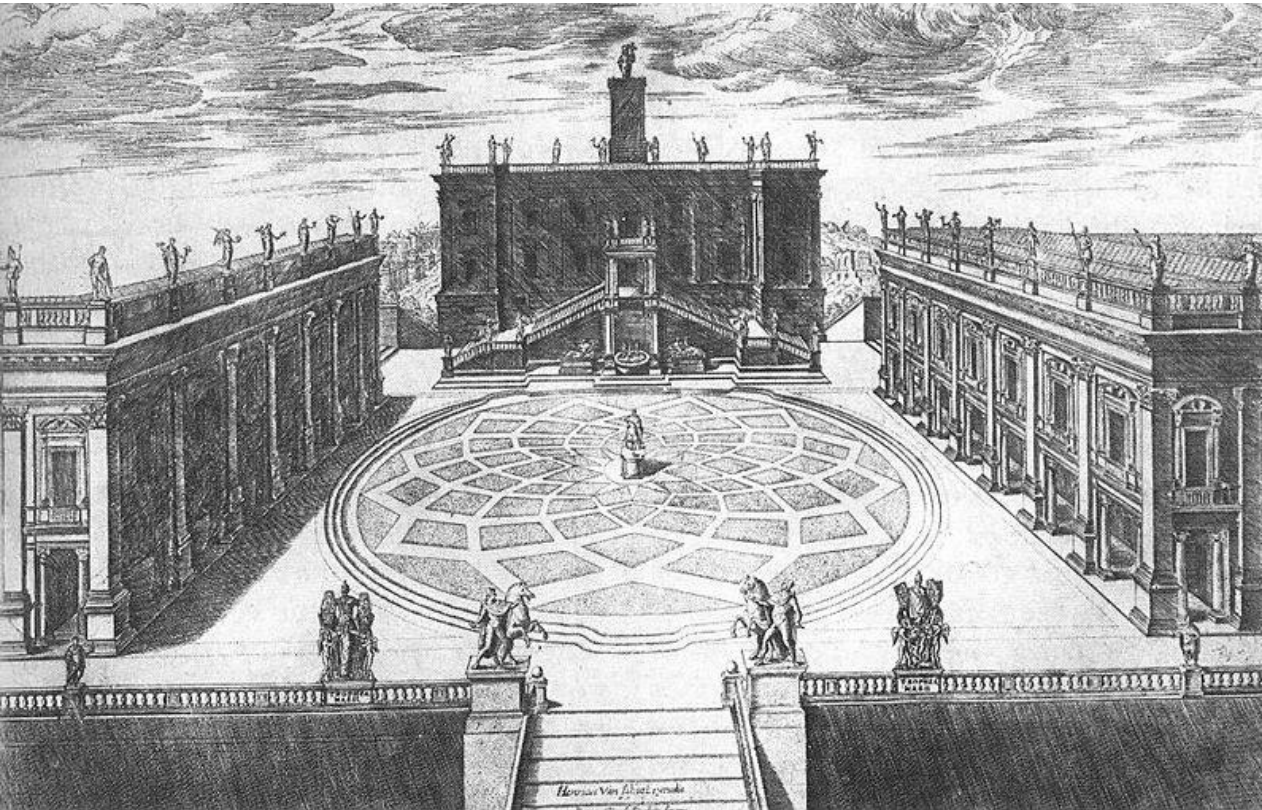
- *Architecture*

The vestibule of the Laurentian Library has Mannerist features which challenge the Classical order of Brunelleschi's adjacent church



Michelangelo's design for St Peter's is both massive but contained, with the corners between the apsidal arms of the Greek Cross filled by square projections

Michelangelo's redesign of the ancient Capitoline Hill included a complex spiralling pavement with a star at its centre



The exterior is surrounded by a giant order of pilasters supporting a continuous cornice. Four small cupolas cluster around the dome

• *Death*



The *Rondanini Pietà* (1552–64)



The *Pietà of Vittoria Colonna* (c. 1540)



Michelangelo and Tiberio Calcagni, *Pieta Firenze* (c. 1550-61)



Statue of Victory (1534), Palazzo Vecchio, Florence