


*MUSEUMS OF
LONDON*



Created: Yanina Vasilevskaya

Form 9





**LONDON OFFERS ENDLESS
POSSIBILITIES FOR TOURISTS
INTERESTED IN MUSEUMS AND
EXHIBITIONS.**



*10 LONDON MUSEUMS THAT
ARE WORTH VISITING*

NATURAL HISTORY MUSEUM



The museum building was built in 1880 by the famous architect at the time - Alfred Waterhouse. The building is decorated with sculptures depicting animals and plants, surrounded by a small park. The museum consists of two parts - a research and exhibition .

If you want somewhere to go to London with the child , it is one of the best options: especially for children , unusual, fun and educational. The museum is open daily from 10:00 to 17:50 , and on the last Friday of every month - until 22:30. Admission is free for all.

BRITISH MUSEUM



British Museum was founded in 1753 with the permission of the British Parliament. Its exposition occupies 94 galleries. Since 1926, every quarter of the magazine British Museum Quarterly, reflecting the ongoing events in the museum . Among the exhibits - a sculpture of the pharaoh Ramses II, granite head of Tuthmosis III, statues of gods and stone sarcophagi . Hours: Daily: 10:00 - 17:30 , Thursdays and Fridays, some departments are open until 20:30. Admission: free .

SCIENCE MUSEUM

Museum exhibition halls are equipped with the latest technology , here you 'll be able to check the scientific discoveries , become a member of an expedition into space at the famous Apollo ship using 3D and 4D simulators , as well as the scientific view movies in 3D IMAX cinema. Will especially enjoy this museum for children because all the exhibits , there are more than 15,000 , it is possible to touch .



Hours: Daily from 10.00 to 18.00 . Entrance to the museum is free.

TATE MODERN



The museum opened in 2000 in the former Bankside Power Station power plant. You can see here the beautiful work of artists such as Cezanne, Bonnard , Matisse , Picasso, Rothko , Dali, Pollock , Warhol and Bourgeois.

Opening Hours : Sunday - Thursday from 10.00 to 18.00 , Friday and Saturday from 10.00 to 22.00 . The museum is closed from 24 to 26 December . Entrance to the museum is free .

VICTORIA AND ALBERT MUSEUM

Victoria and Albert Museum is the world's largest museum of art and design , it contains exhibits of more than 3,000 summer folk art. As with all public museums UK, free entrance here any day of the year.

Open daily from 10.00 to 17.45 and Friday from 10.00 to 22.00 . The museum is closed from 24 to 26 December .



MADAME TUSSAUD'S LONDON

Founded in 1835, is divided into 14 thematic interactive areas where exposed to more than 1000 Wax . Computer simulation of voice , noise tracking , 4D- animation in the background and tracks the movements of the wax will make your appointment with the characters real and unforgettable.



Hours: 9:00 - 19:00.

Login : children (4 - 15 years)

THE LONDON DUNGEON



Thrilling rides , special effects play these actors and dark corridors . You may encounter the horrors such as medieval torture , plague, Jack the Ripper and Sweeney Todd.



Open daily except Christmas .
Ticket price : £ 21.00.

IMPERIAL WAR MUSEUM

The main purpose of the museum - is to show how severe can be a war for all mankind. Now the museum is undergoing a global reconstruction of the building and most of the exhibits under restoration. Guns, tanks, planes , submarines and even a missile "Polaris" height of 19 meters like the boys of all ages. Open daily from 10.00 to 17.00 , cash do 16.30 work . Entrance to the museum is free



ROYAL OBSERVATORY GREENWICH

Here are located several museums - Planetarium 120 places , house-museum of Astronomer Royal , John Flamsteed , the museum of astronomical and navigational instruments . If you come to the statue of General Wolfe , you will have an excellent view of London. Do not forget to take a photo with one foot in the East , and the other - in the Western Hemisphere!

Open daily from 10.00 to 18.00 , cash do17.30 work , the museum is closed from 24 to 26 December . Entrance to the museum is free .



MUSEUM OF LONDON

The ancient Saxons , stunning the Middle Ages, the turbulent years of the civil wars , the horrors of the plague and fires busting - all reflected in his expositions . In the Gallery of Modern London you can stroll through the streets of Victorian London and admire the magnificent carriage Lord Mayor.

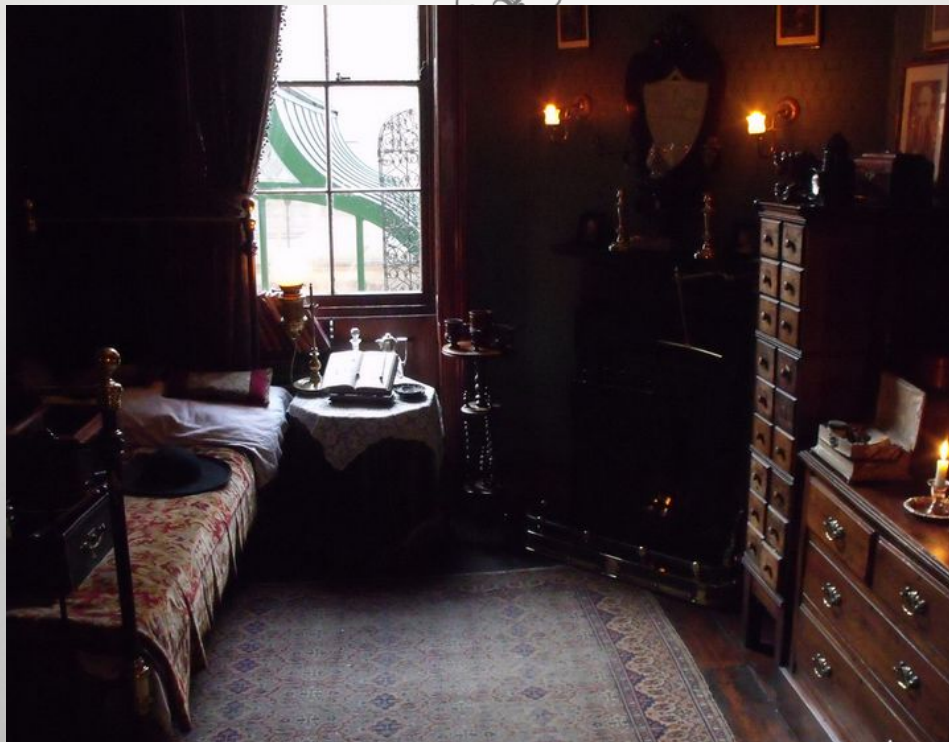
Open daily from 10.00 to 18.00 , cash do17.30 work , the museum is closed from 24 to 26 December . Entrance to the museum is free .



IT IS ALSO WORTH VISITING
SHERLOCK HOLMES MUSEUM IN
LONDON



ROOM DETECTIVE




ESSENTIAL ATTRIBUTES DETECTIVE



BREAKFAST TABLE





I hope you enjoyed it.

***THANK YOU FOR YOUR
ATTENTION.***



THE END