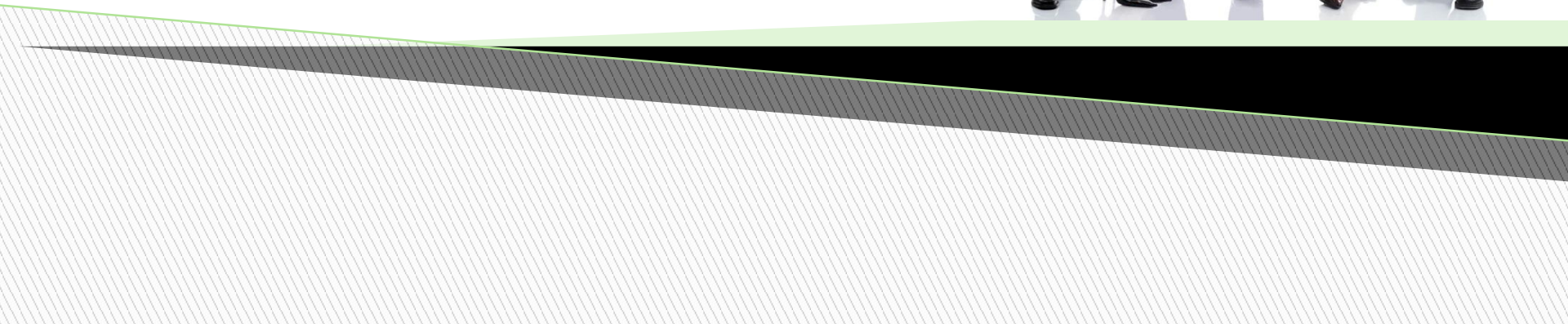


# My future professionior







**PROFESSION**

WORK  
TRAIN

EMPLOYERS

OFFICE  
ACTIVITY  
MISSION  
DAILY

AGENCY  
ENTERPRISE  
WORLD  
EMPLOYEE

RECRUITMENT

PRACTICE COMMUNICATION

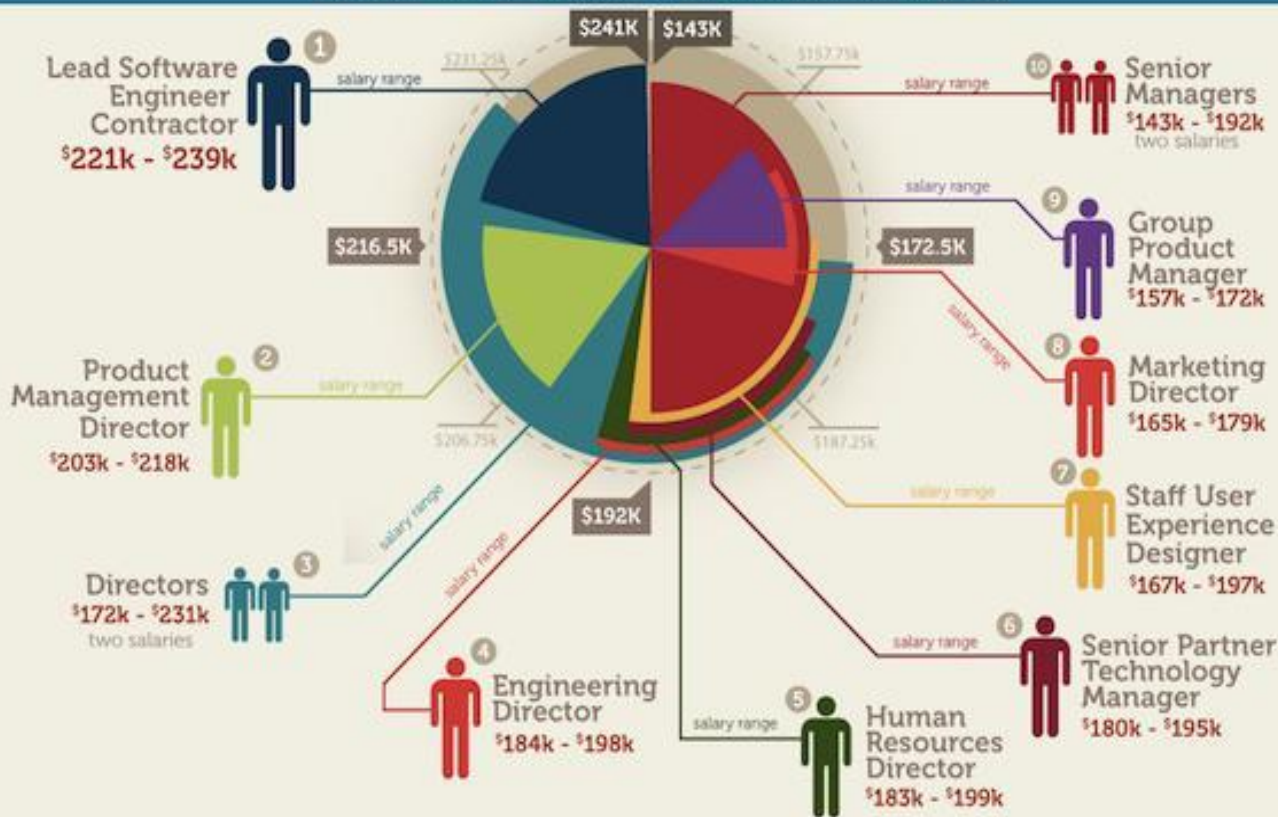
TASK

WORK



# top 10 salaries at Google™

RANGE FROM \$143,000 TO \$241,000 PER YEAR.



# Which jobs are the lowest paid?

<b>Male full-time workers</b>	<b>% below £3.60</b>	<b>of which are* below £3.00</b>
Waiters	25%	44%
Bar staff	21%	22%
Security guards	14%	40%

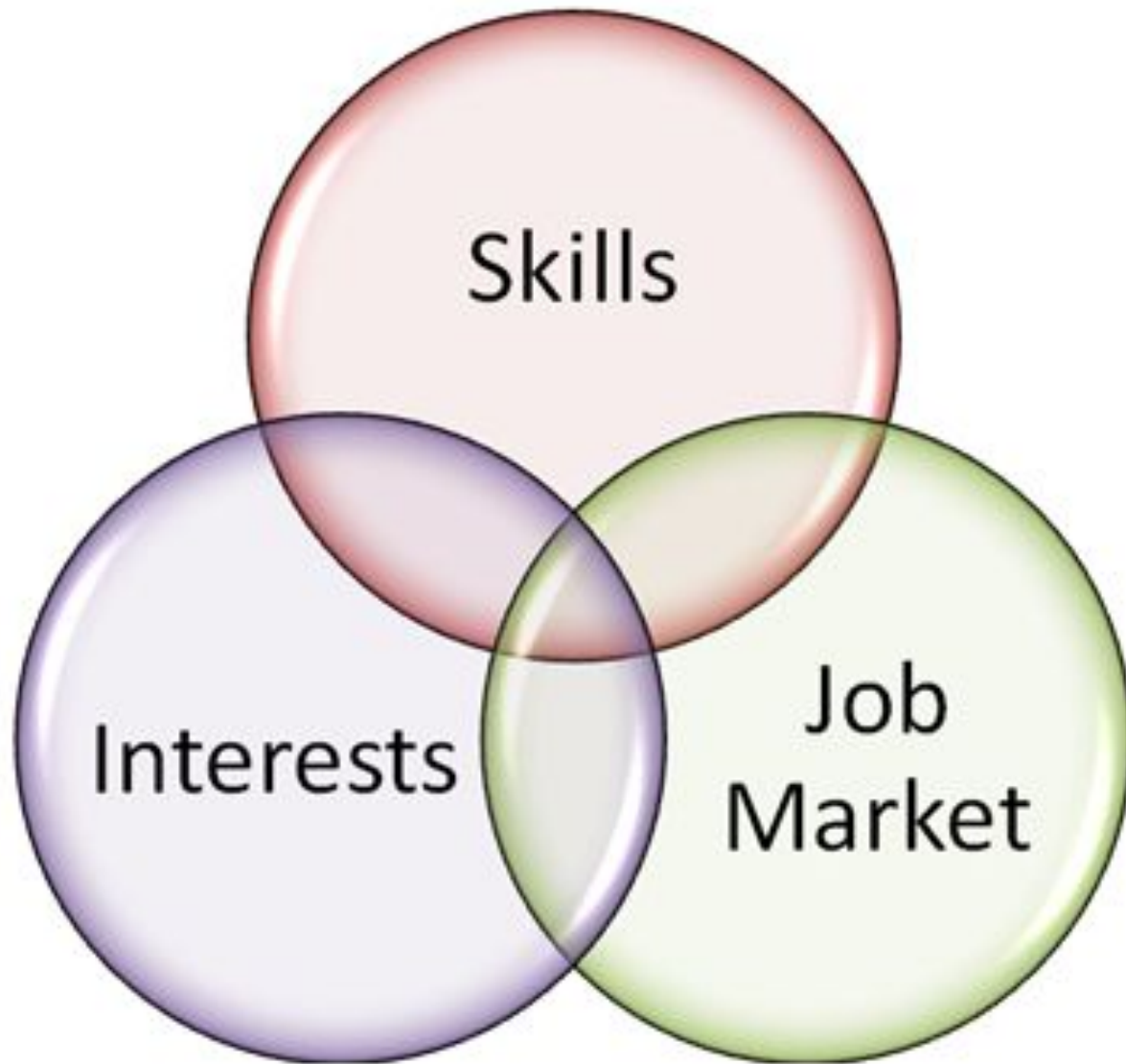
<b>Female full-time workers</b>		
Hairdressers	47%	43%
Bar staff	35%	27%
Childcare assistants	26%	48%

<b>Female part-time workers</b>		
Waitresses	51%	16%
Hairdressers	30%	21%
Cleaners	29%	27%

\* Refers to % of low paid only earning under £3  
SOURCE: Figures supplied by LPC survey 1998





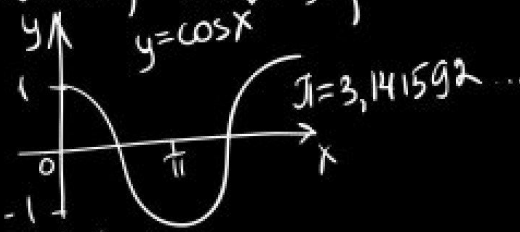
Skills

Interests

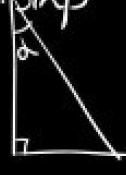
Job  
Market

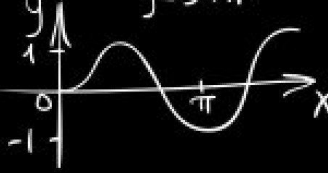


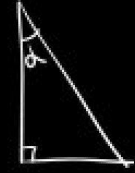
$\cos^2 \alpha = 1 - \sin^2 \alpha$   
 $\sin^2 \alpha + \cos^2 \alpha = 1$   
 $\pi = 3,141592 \dots$

$y = \cos x$   


$\sin(\alpha - \beta) = \sin \alpha \cdot \cos \beta - \cos \alpha \cdot \sin \beta$   
 $\sin(\alpha + \beta) = \sin \alpha \cdot \cos \beta + \cos \alpha \cdot \sin \beta$   
 $\cos(\alpha - \beta) = \cos \alpha \cdot \cos \beta + \sin \alpha \cdot \sin \beta$   
 $\cos(\alpha + \beta) = \cos \alpha \cdot \cos \beta - \sin \alpha \cdot \sin \beta$



$y = \sin x$   






**PROJECT**  
**MANAGEMENT**  
**COST**  
**TIME**  
**CONTROL**  
**PROCESS**  
**PLANNING**  
**DEVELOPMENT**  
**COSTS**  
**CONSTRUCTION**  
**WORK**  
**SYSTEMS**  
**CRITICAL**  
**WELL**  
**NECESSARY**  
**HUMAN**  
**COMPLEX**  
**RESPONSIBILITIES**  
**KNOWLEDGE**  
**USE**  
**TECHNIQUES**  
**MONITORING**  
**VS**  
**CONTRACT**  
**INTERNATIONAL**  
**MANAGING**  
**PRODUCT**  
**PART**  
**CHAIN**  
**ACTIVITIES**  
**STAGES**  
**SCOPE**  
**EXECUTION**  
**MODEL**  
**STANDARDS**  
**METHODOLOGY**  
**PERFORMED**  
**SPECIFIC**  
**FIELDS**  
**TYPICALLY**  
**COMMON**  
**EXTREME**  
**CONSTRUCTION**  
**PRINCE2**  
**CLOSING**  
**EVENT**  
**RESOURCES**  
**PLAN**  
**EDIT**  
**INCLUDE**  
**BASED**  
**GUIDE**  
**CHAINS**  
**OVERALL**  
**CHANGES**  
**MAY**  
**STRUCTURE**  
**RESOURCE**  
**STAGE**  
**FOLLOWING**  
**QUALITY**  
**PHASE**  
**MAYBE**  
**COMPLETE**  
**NEEDED**  
**MAYBE**  
**STRUCTURE**  
**RESOURCE**  
**STAGE**  
**FOLLOWING**  
**QUALITY**  
**PHASE**  
**MAYBE**  
**COMPLETE**  
**NEEDED**  
**MAYBE**  
**STRUCTURE**  
**RESOURCE**  
**STAGE**  
**FOLLOWING**  
**QUALITY**  
**PHASE**  
**MAYBE**  
**COMPLETE**  
**NEEDED**





**THE END**