

NATIONAL SYMBOLS

**К УМК И.Н.
Верещагиной,
О.В. Афанасьевой,
5 класс
LESSON 5**



Подготовлено
учителем
английского языка
Соболевой Алевтиной
Владимировной.
МОУ «Гимназия №4»,
г.о. Электросталь,
Московская область.
2011 год

A symbol is something which represents an idea. The purpose of a symbol is to communicate meaning.



Every country and nation has places, sights or buildings that can be used as their symbols.

Here are the most known and popular symbols that describe the three biggest countries:

Russia

America

Great Britain

THE NATIONAL SYMBOLS OF GREAT BRITAIN

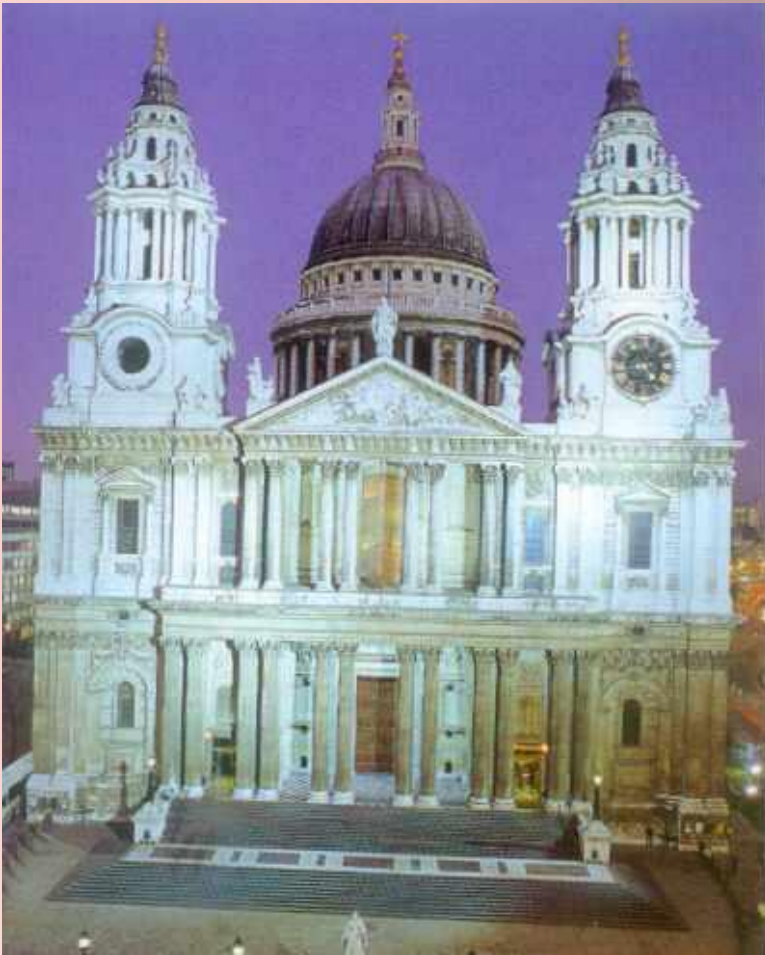


Big Ben



Big Ben is the name of the bell on the clock. It is one of the most famous symbols of London. The clock is on the tower of the Houses of Parliament. It is 98 meters high. The bell is about 14 tons. It is named after Sir Benjamin Hall, the first Commissioner of Works.

ST PAUL'S CATHEDRAL



St Paul's Cathedral is another symbol of London. It is the greatest English Church where many state ceremonies take place. In the basement of the cathedral there are the graves of many prominent people and national heroes. The famous English architect **Sir Christopher Wren (1632-1723)** designed it after the Great Fire (1666). It took him 35 years. It is a beautiful building with many columns and towers. The cathedral is 175 m long and 111 m high.

The Houses of Parliament

- The building is actually called the Palace of Westminster, but is more commonly known as the Houses of Parliament. They are the home of the British Government. The building contains 1200 apartments. Among them are the House of Lords and the House of Commons. When the House is in session a Union Jack (the flag of the UK) flies from the Victoria tower by day and a light burns in the Clock Tower by night.



THE NATIONAL SYMBOLS OF THE USA



US

A

One of the famous symbols of the USA is the Statue of Liberty. It is a gift from the French government to the United States.



The statue of Liberty is a woman who holds a torch up high. She symbolizes a welcome to a land of freedom. It was put up in New York Harbor in 1886.



The White House

The Capitol is the place where the Congress meets . It is in the centre of Washington, DC.



The White House has been the residence of the President since 1800. It is the oldest public building in Washington and one of the most beautiful. It is located at 1600 Pennsylvania Avenue in Washington, DC.

The American Bald Eagle is the national symbol of the country. It symbolizes each individual's independence and strength. It was officially adopted in June 20, 1782.



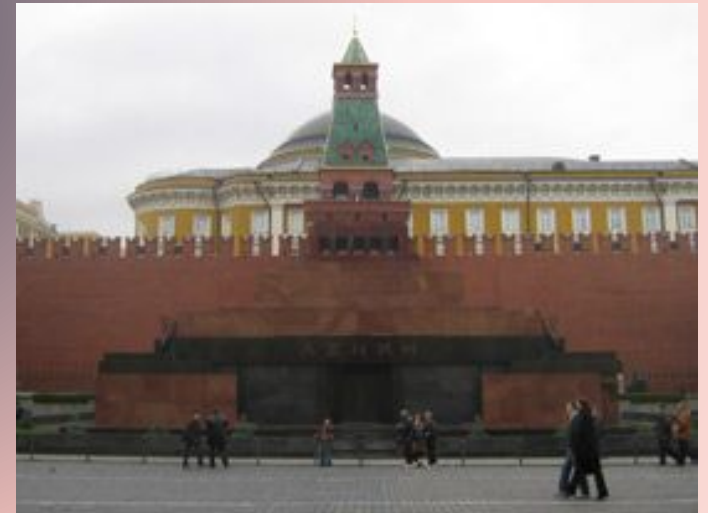
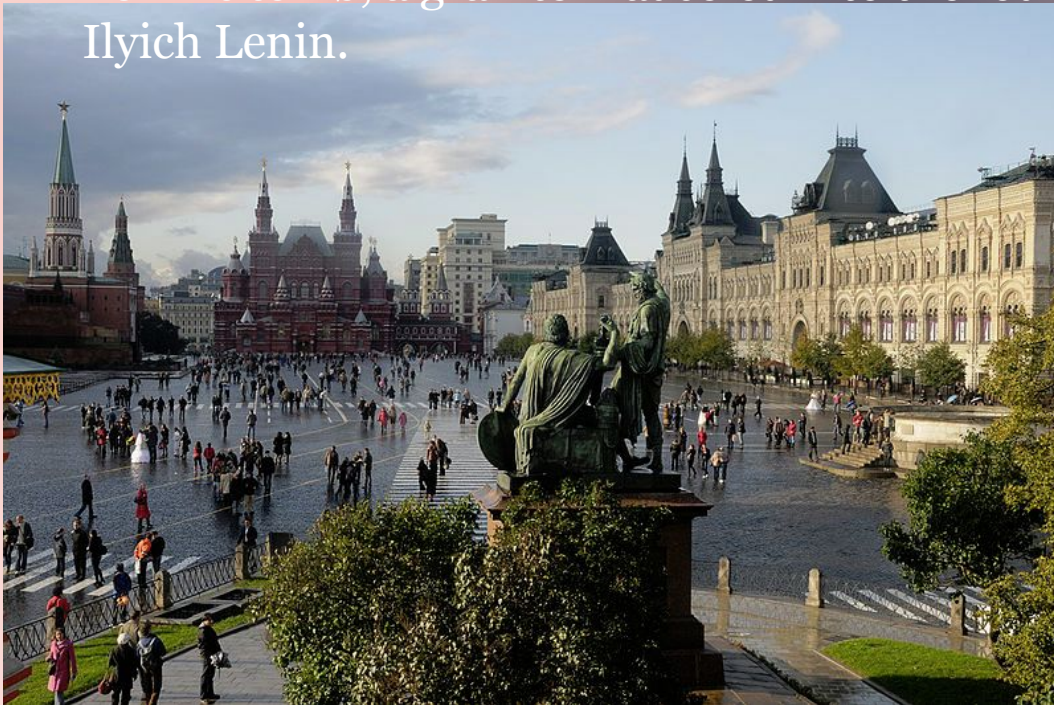
THE NATIONAL SYMBOLS OF RUSSIA

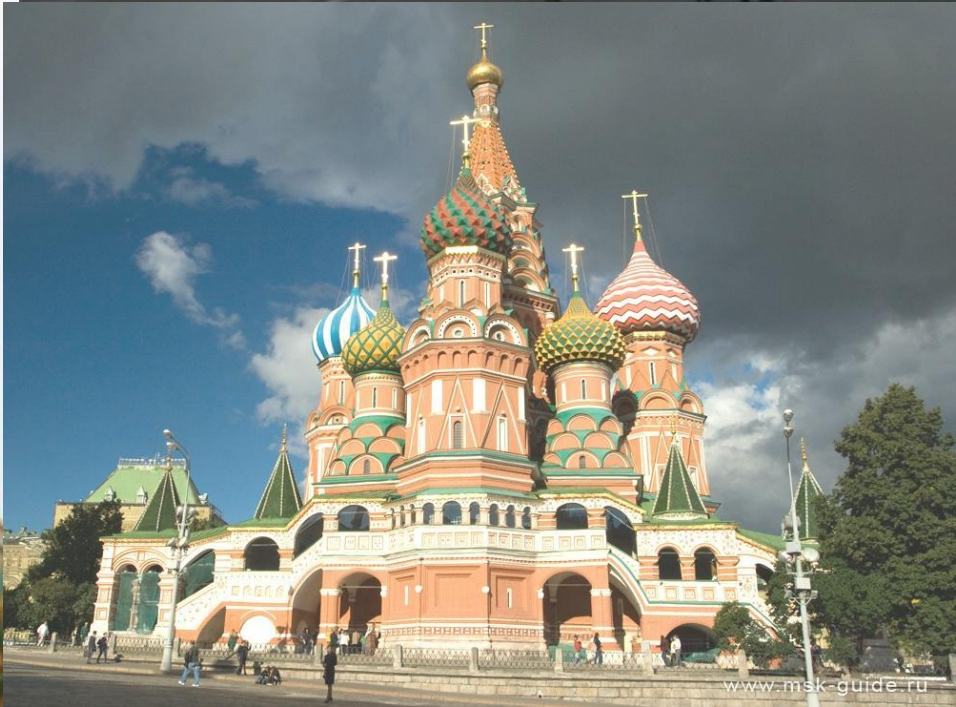


RED SQUARE



Red Square is the heart of Moscow. It is the most beloved and most visited place of the city. On its four sides stand the Kremlin, GUM- Department Store, State Historical Museum and St. Basil's Cathedral - the centres of government, commerce, history and religion. The square is also home to Lenin's tomb, a granite mausoleum to the founder of Socialism – Vladimir Ilyich Lenin.

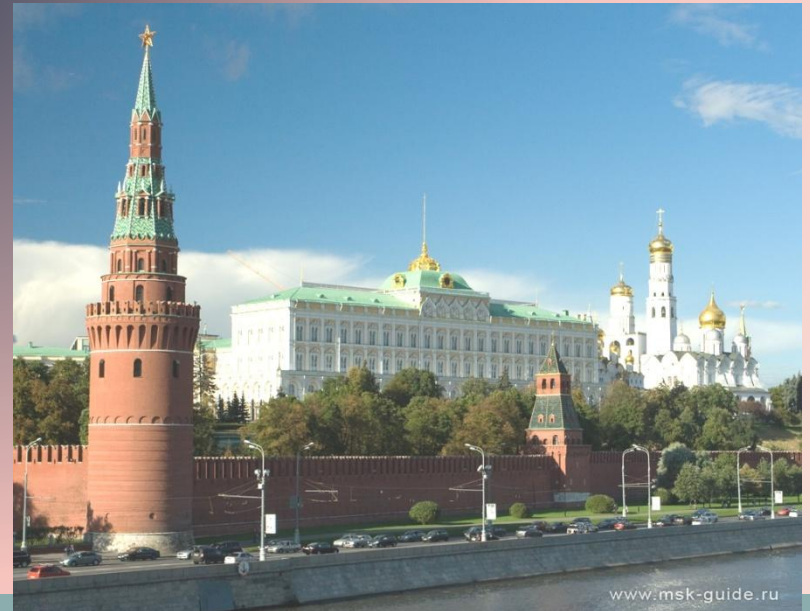
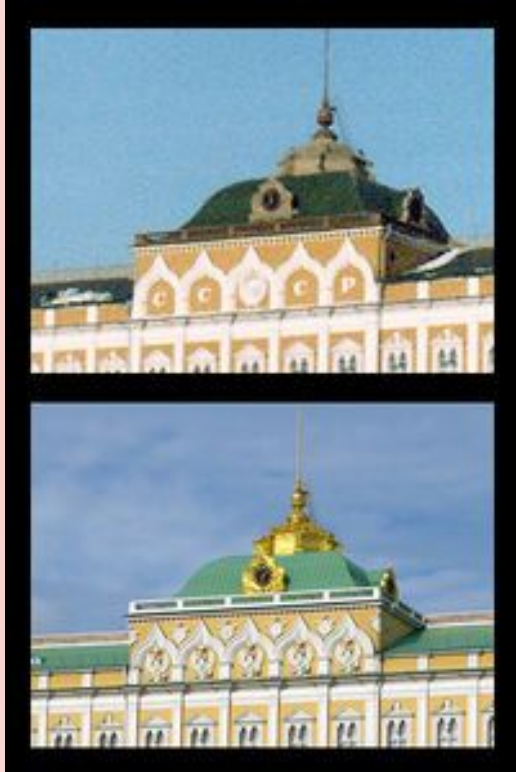




The Kremlin

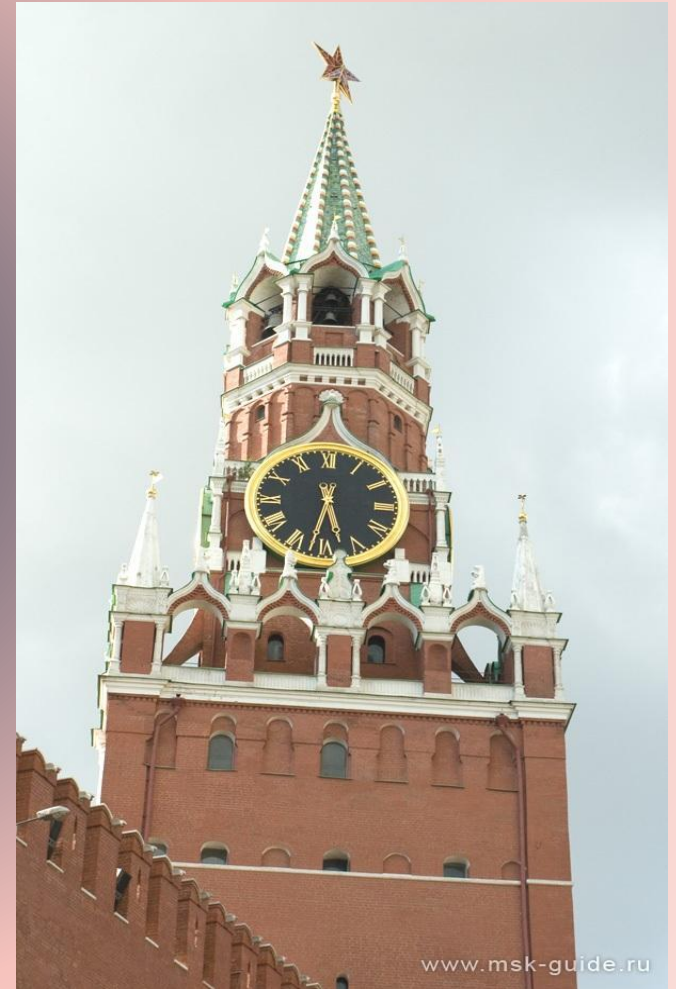


- **The Kremlin** is a historic fortified complex at the heart of Moscow. It overlooks the Moskva River to the south, Saint Basil's Cathedral and Red Square to the east and the Alexander Gardens to the west. Its red brick walls and 20 towers were built at the end of the 15th century.



The Spasskaya Tower.

- The Kremlin includes four palaces, four cathedrals and the Kremlin Wall with towers. The most famous is the Spasskaya Tower. It is also the symbol of Russia and Moscow. It has a famous clock; one can hear the clock on the radio.
- The Kremlin is the official residence of the President of Russia.



ST. BASIL'S CATHEDRAL

The **Cathedral of the Protection of Most Holy Theotokos on the Moat** (Собор Покрова Пресвятой Богородицы, что на Рву) is popularly known as **Saint Basil's Cathedral** (Собор Василия Блаженного). It is a Russian church erected on Red Square in Moscow in 1555–61. It was built on the order of Ivan the Terrible (Иван Грозный) to commemorate the capture of Kazan.

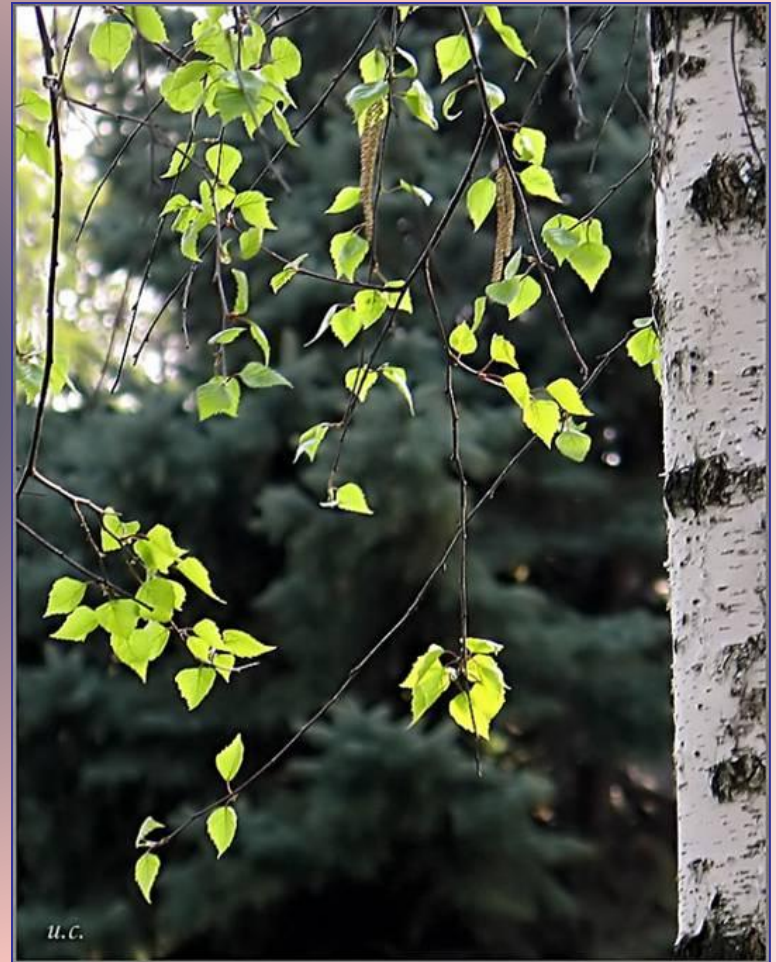
In front of the Cathedral there is **Monument to Minin and Pozharsky** (Па́мятник Ми́нину и Пожа́рскому). It is a bronze statue commemorating two Russian national heroes.



The birch tree.



Another symbol of Russia which all Russian people know and love is **the birch tree**. You can find these trees everywhere. People sing beautiful songs with poetic words about birch trees.



Questions to answer:



1. What are the most famous national symbols of Great Britain?
2. What is Big Ben?
3. Who built St. Paul's Cathedral? What is there in the basement of the cathedral?
4. What is the Palace of Westminster ?
5. How many rooms are there in the Houses of Parliament? What is on the Victoria Tower when Parliament sits?

Questions to answer (2):



1. What national symbols of the USA can you name?
2. How did the Statue of Liberty appear in New York?
3. Where is the Capitol?
4. How long has the White House been the residence of the President?
5. Which bird symbolizes freedom and independence in the USA?

Questions to answer (3):



1. Can you think of any Russian national symbols?
2. What is the most visited place in Moscow? Do you know why Red Square is called “red”?
3. What can you see on Red Square?
4. How many towers has the Kremlin got? What is the Spasskaya Tower famous for?
5. Why was St. Basil’s Cathedral built? What is there in front of it? Do you know who these people were?
6. What is the most popular tree in Russia?



WELL DONE!

THANKS!



Источники информации:



- www.wikipedia.org
- УМК Верещагиной И.Н.. Афанасьевой О.В.
для 5 класса