

National Park "Land of Leopard"



Фотосъезд Букумр Старо.ХК
AMURECO.RU



- Land of the Leopard National Park was established to preserve the natural environment in the population of the Far Eastern leopard.
- The park was established in 2012 and 5 April. Its total area - 261,868.84 hectares. By the "Land of Leopard" park area adjoining reserve "Cedar Pad".

Особо охраняемые территории юго-запада Приморского края

Условные обозначения

- Заповедники
- Национальные парки
- Охранные зоны
- Район разработки нового карьера



- национа
- восстанк



44°0'
43°30'
43°0'
42°30'

131°0' 132°0'

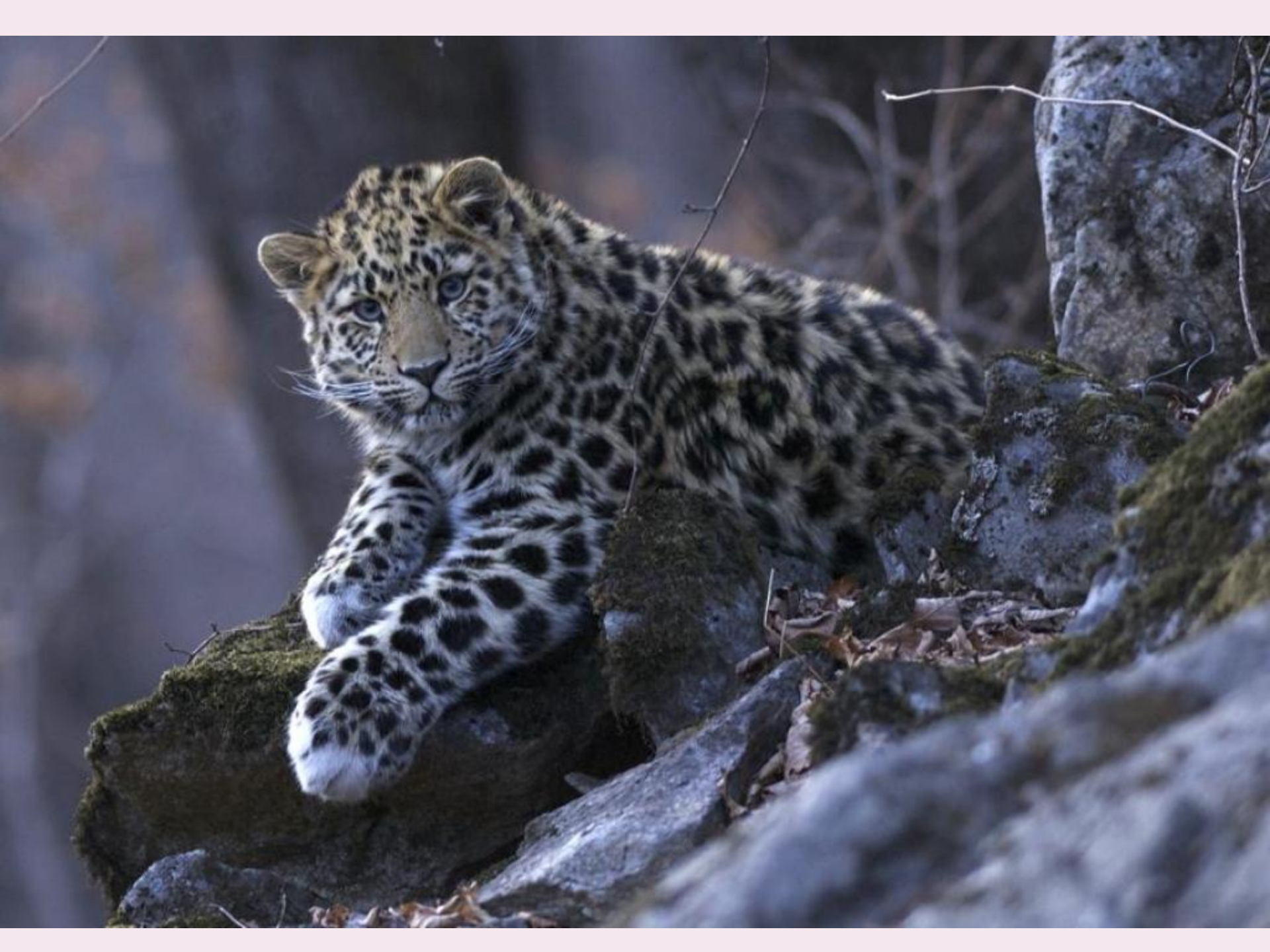
(с) НП "Прозрачный мир"

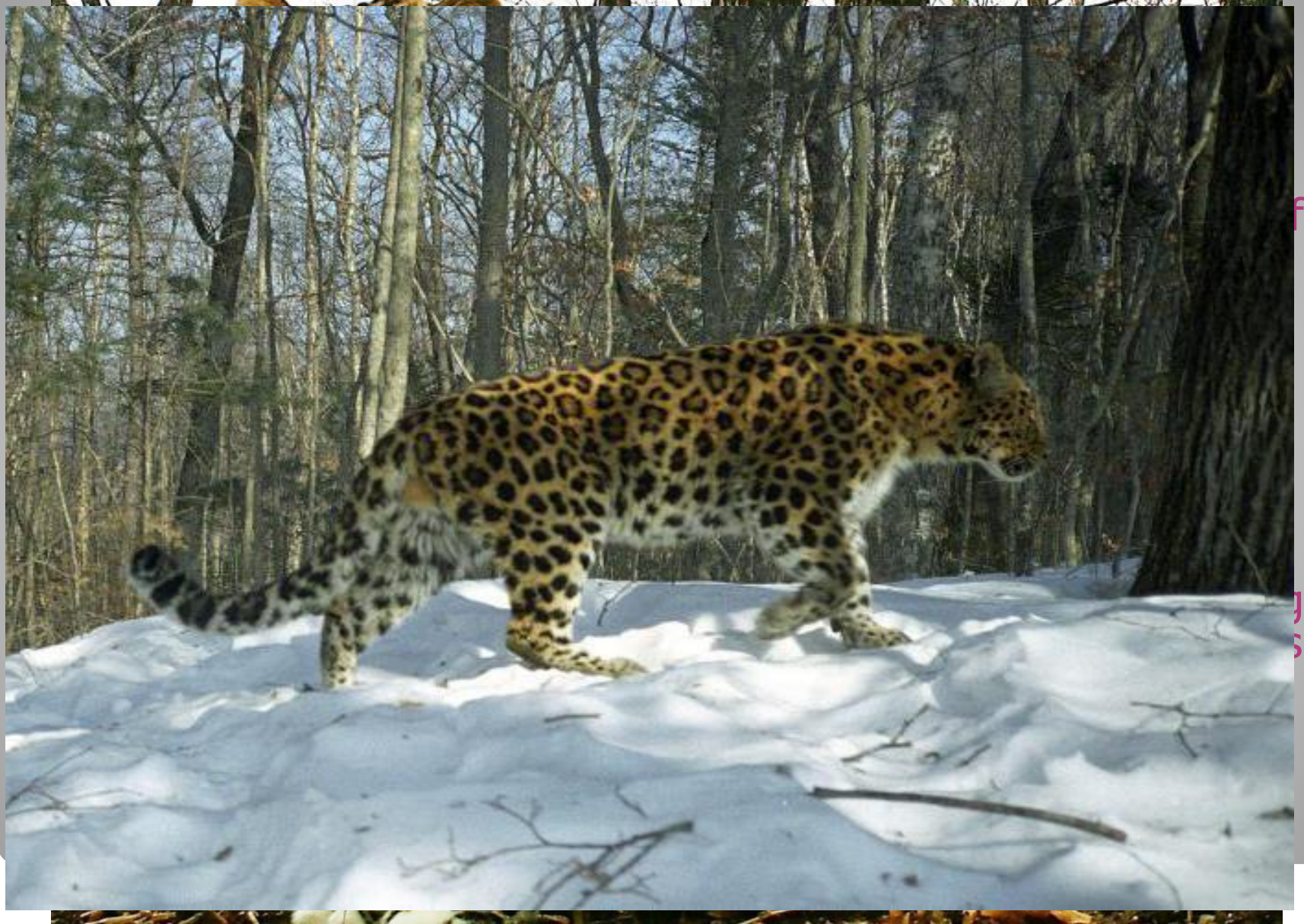




Фотограф Денис Кочетков

- The forests and meadows nature reserve inhabited by the Amur takydromus, Adders, runners. The rotten stumps, trees, flowering meadows are found numerous insects. Here you can see exotic butterflies, in particular pavlinoglazok Brameya and Artem, moths erebomorfa and Ussuri, Donaciinae Schrenk.
- On a protected area inhabited by different species of mammals. Rodents are presented in the first red-gray vole. Usual greater long-tailed hamster, shrew, otter, speakers, American mink.
- Among the rare species - Ussuri Procellariiform and Ikonnikova bat, giant shrew and most small mammal in Russia - a tiny shrew. In addition, in the national park can be seen flying squirrel, chipmunk, shrub Manchurian hare.
- Among the large mammals common wild boar, roe deer, Himalayan black bear. Less commonly, in a protected area meets musk deer and sika deer. It is home to the representatives of the cat family: wild cat Far East, Far Eastern leopard, the Amur tiger.
- "Land of Leopard" Quite a varied bird fauna of the national park. Wood warblers inhabit (Whitehead and svetlogolovaya) zheltospinnaya and blue flycatcher, brown hawk-owl, Indian scops owl. Also here there are the following types of birds: gray wagtail, mandarin duck, kingfisher, Brown Dipper.





f env

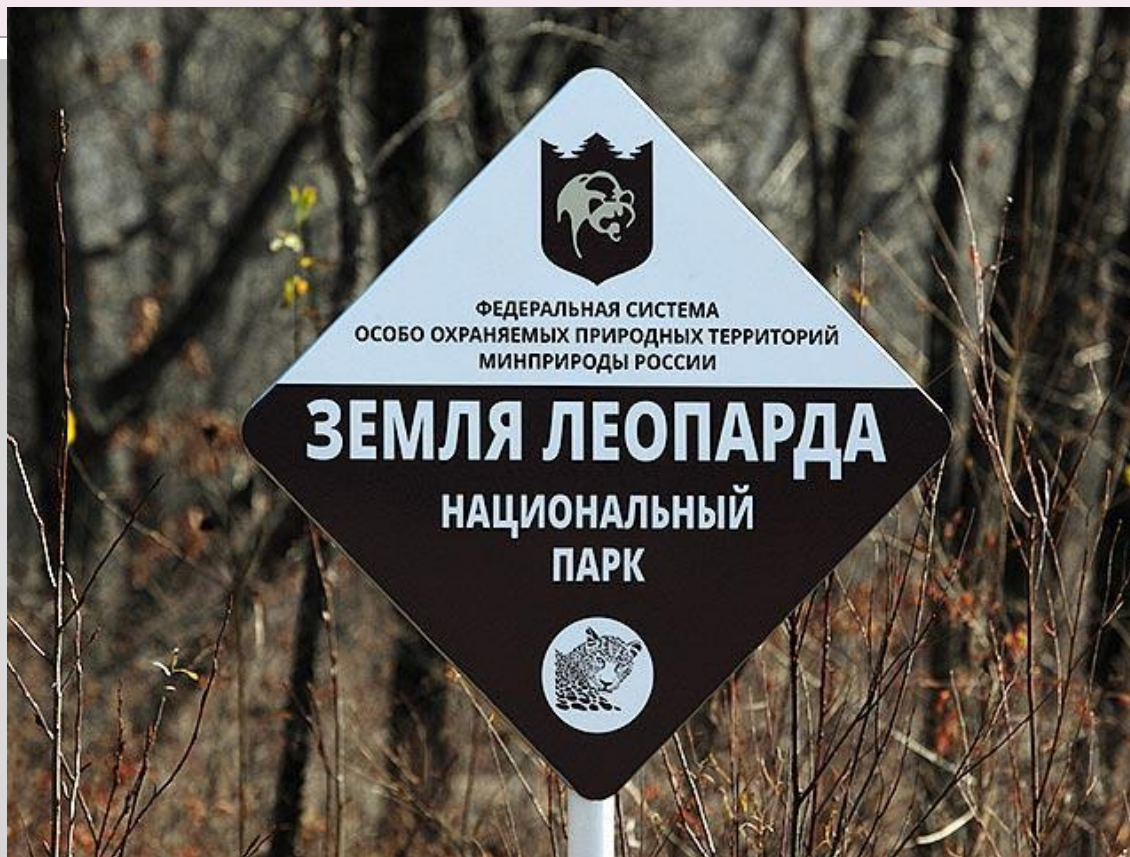
J
S

● T
● T
m
p
b
c
c
a
z
L



d
oute
nts,
se
e"

Leopard trail



From this information it can be concluded that the plot of land on which there is a National Park, it is an amazing and unique, to which people have to take good care of, thus preserves the population of the animal and plant worlds.

For the sake of curiosity and extreme sensations can visit this place and remember this day for the rest of life.



Thank you