



ENVIRONMENTAL POLLUTION



Types of pollution

An aerial photograph of a river or stream. The water is dark and murky, with a thick layer of brown sediment or silt visible in the center. The banks are composed of reddish-brown soil and some sparse green vegetation. The overall scene depicts significant water pollution.

- Air Pollution
- Water Pollution
- Thermal Pollution
- Soil Pollution
- Radioactive Pollution

Air pollution

The background of the slide is a photograph of an industrial facility. Two prominent, tall, dark smokestacks are the central focus, each emitting a thick, billowing plume of white smoke that rises into the sky. The sky is a clear, bright blue. In the lower portion of the image, the dark silhouettes of industrial buildings and structures are visible against the sky.

Imbalance in the quality of air so as to cause adverse affects on the living organisms existing on earth.

Causes of air pollution

The background of the slide is a photograph of an industrial facility. Several tall, dark smokestacks are visible, with thick white plumes of smoke rising from them into a sky filled with large, white, fluffy clouds. The overall scene is somewhat hazy, suggesting air pollution. The text is overlaid on the left side of the image.

1. Natural sources

- Volcanic eruptions
- Forest fires
- Pollen grains of flowers

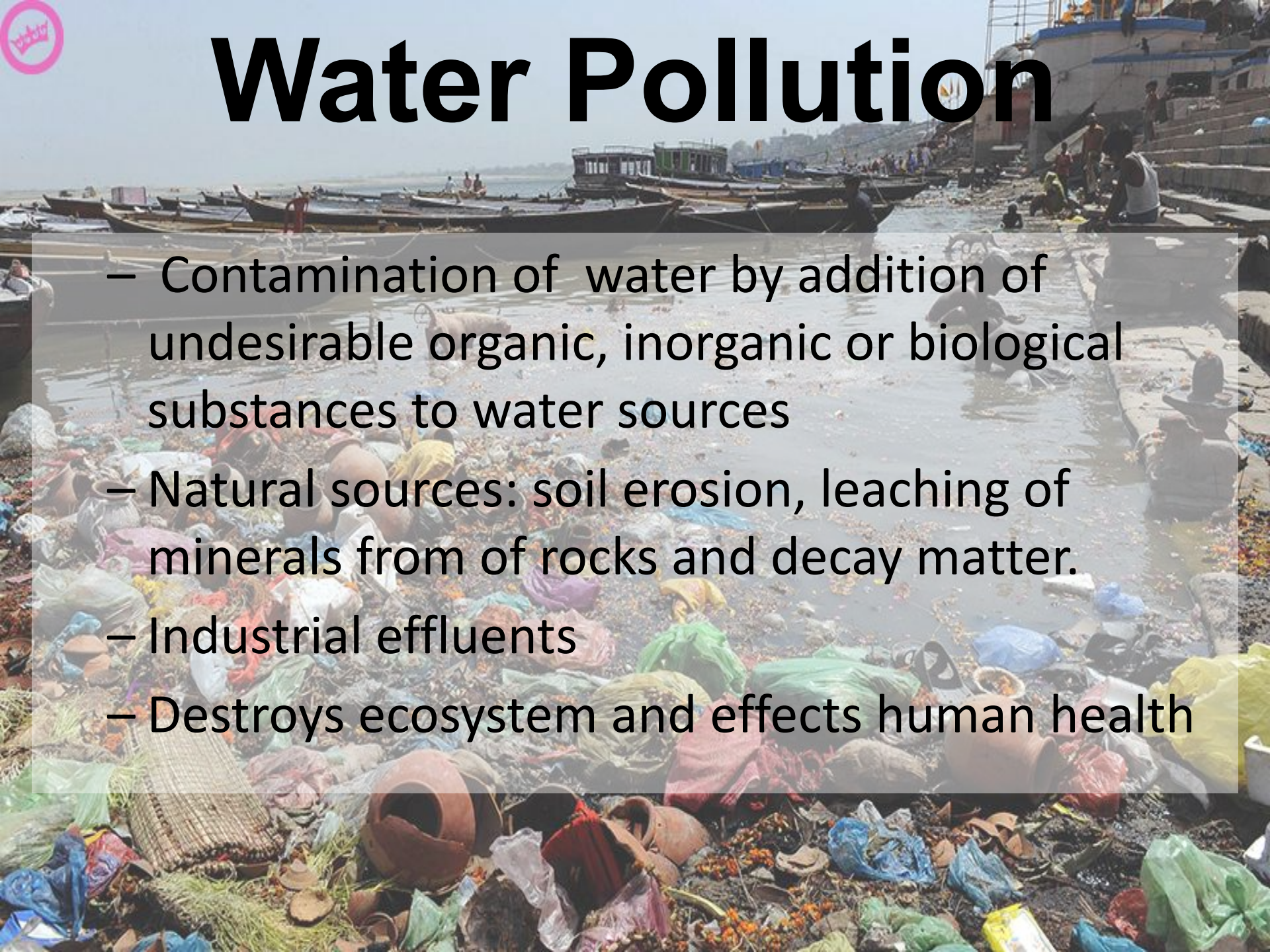
2. Man-made sources

- Deforestation
- Emission from vehicles
- Rapid industrialization
- Wars



Water Pollution

- Contamination of water by addition of undesirable organic, inorganic or biological substances to water sources
- Natural sources: soil erosion, leaching of minerals from of rocks and decay matter.
- Industrial effluents
- Destroys ecosystem and effects human health





Sources of water pollution

- Community waste waters
- Industrial wastes
- Agricultural sources
- Under ground water pollution
- Marine pollution
- Thermal pollution



Soil pollution

- Undesirable change in the physical, chemical or biological property which adversely affects its productivity
- Caused by dumping of wastes, agrochemicals and as indirect result of air pollution

Sources of Soil Pollution

- Domestic wastes
- Agricultural wastes
- Industrial wastes
- Excretory products
- Salination



Radioactive pollution

The background of the slide features a photograph of a nuclear power plant. Several large, white, conical cooling towers are visible, each emitting a thick plume of white steam that rises into the air. The scene is set against a clear, bright sky, and the overall lighting is bright, suggesting a sunny day. The towers are arranged in a row, and the steam creates a sense of industrial activity and heat.

- Physical pollution that affects air, water and soil. Caused by ionizing radiations of harmful nature emitted from disintegrating atomic nuclei.
- The natural sources include cosmic rays that reaches the earth surface and radiations from radium 224, uranium 235 thorium 232 etc

Man made sources

The background of the slide is a photograph of a nuclear power plant. Several large, white, hyperboloid cooling towers are visible, each emitting a thick plume of white steam that rises into the air. The scene is captured in a slightly hazy, overcast light, giving it a somewhat somber or industrial feel. The towers are arranged in a row, with some in the foreground and others receding into the distance.

- Nuclear weapons
- Reactors and Nuclear fuel
- Waste waters containing these wastes
- X-rays used in medical practices
- Ultra violet rays present in solar radiations

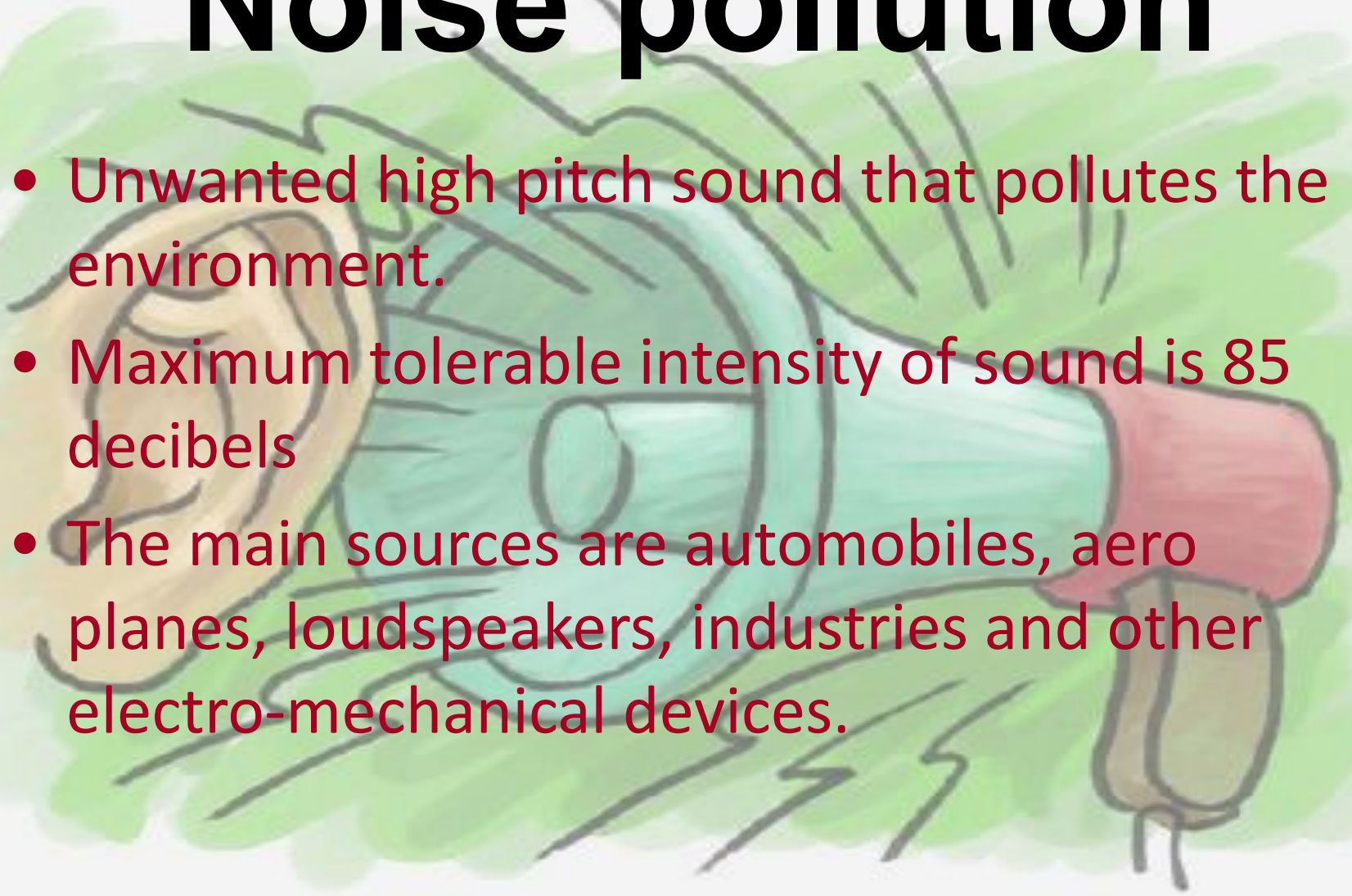
Effects

The background of the slide is a photograph of a nuclear power plant. It features several large, white, hyperboloid cooling towers that are emitting thick plumes of white steam. The scene is set against a clear, bright sky, and the overall lighting is bright, suggesting a sunny day. The towers are arranged in a row, with the central one being the most prominent.

- Mutation
- Cancer
- Radioactive substances in food chain cause retarded growth and bone cancer.
- Increases infant mortality rate

Noise pollution

- Unwanted high pitch sound that pollutes the environment.
- Maximum tolerable intensity of sound is 85 decibels
- The main sources are automobiles, aero planes, loudspeakers, industries and other electro-mechanical devices.



Effects of noise pollution

- Damage to ear drum and impairment to hearing.
- Damages heart, liver and brain
- Emotional disturbances and behavioral changes
- Leads to anxiety and stress



Thermal Pollution

The term thermal pollution has been used to indicate the detrimental effects of heated effluents discharged by various power plants.

Causes of thermal pollution

A large industrial power plant facility, likely a coal-fired or nuclear plant, is shown in the background. The plant features a complex network of metal scaffolding, pipes, and several tall, cylindrical smokestacks. The facility is situated near a body of water, with a dark, rocky or vegetated shoreline in the foreground. The sky is clear and blue.

- Nuclear power plants
- Coal fired power plants
- Industrial effluents

The End

