

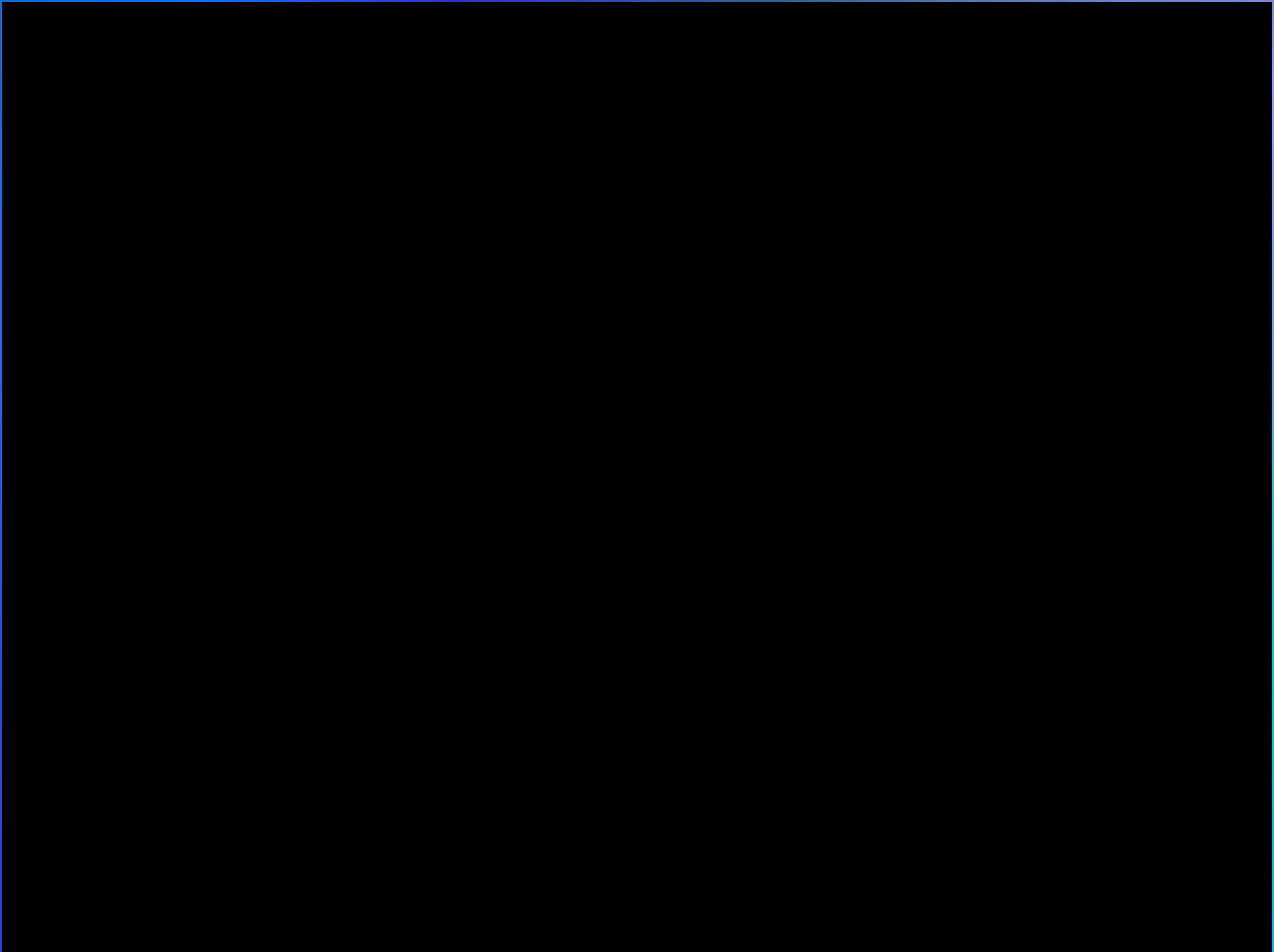
A satellite view of Earth from space, showing the Americas and surrounding oceans. The image is a high-resolution satellite photograph of the Earth, showing the Americas and surrounding oceans. The text "TV show" is overlaid in the upper center.

TV show

PLANET EARTH



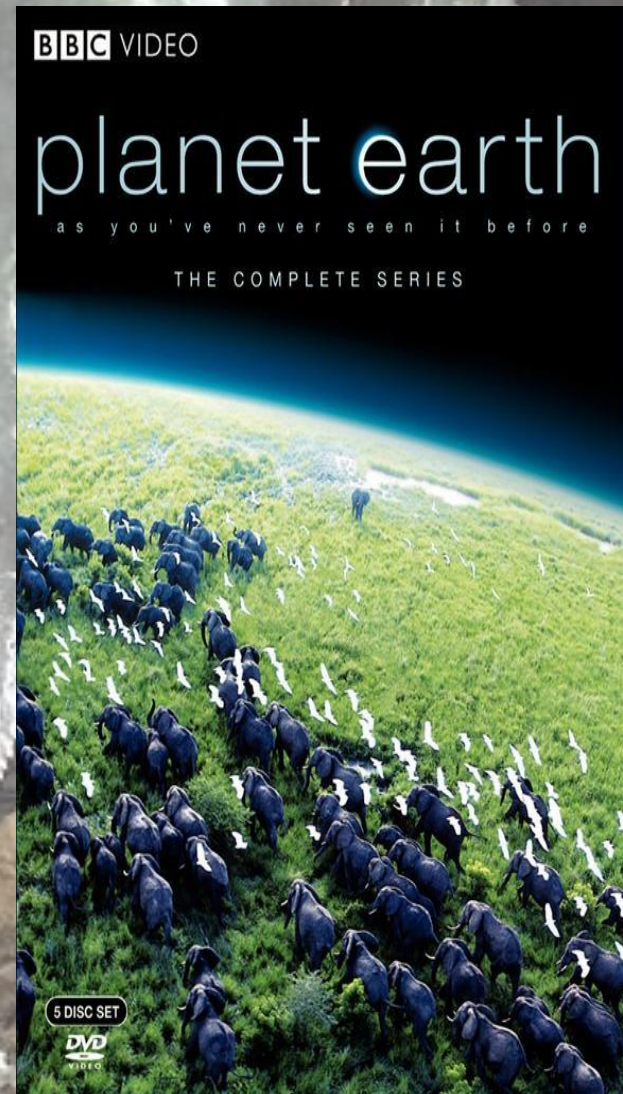
My favorite TV show is "Planet Earth"
on the Discovery Channel.

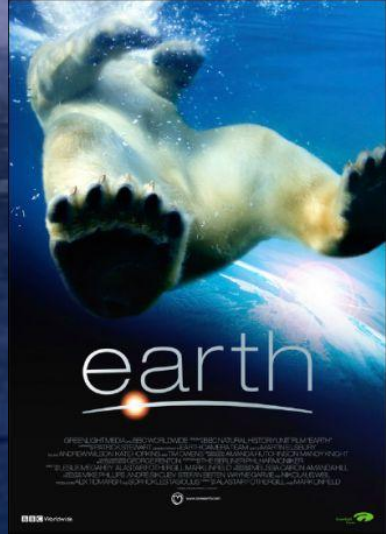


I am confident that this program is breaking all records of popularity among others of popular TV shows.



I think this is the best source of information for people, who interest in the awesome beauty of the Earth and wants to understand the way this complex mechanism, learning about such things as energy and light, wind and fire, planets and stars, and much more.






Program series
"Planet Earth"
appeared in 2006.
The program was
launched the
Department of
Natural channel
BBC. For five years,
there is this
program, it became
the most expensive
series of

"Planet Earth" was released for the first time the UK in March 2006 on the channel BBC One, and a year later she continued her winning streak in the American show Discovery Channel. By June 2007, a series of television programs "Planet Earth" was shown in 130 countries around the world.



The background of the slide is a photograph of two humpback whales swimming in clear, deep blue water. The whales are positioned diagonally, with one slightly above and to the right of the other. Their bodies are dark, and their heads are visible, showing the characteristic hump. The water is bright blue, and there are some light reflections on the surface of the water at the top of the frame.

Series comprises eleven episodes,
each of which is a review of the
various habitats of living
organisms on Earth.



AWARDS

"Planet Earth" received a number of awards in the UK and the U.S., as well as a number of awards at film festivals of wildlife around the world.



KINOPOISK.

THE END
THANK YOU FOR ATTENTION!

