

*Predictors of existential  
fulfillment in romantic  
relationships*

*Elena Ukolova, Vladimir Shumskiy*

National Research University “Higher School of  
Economics”, Moscow

# Research problem

What contribution to the existential fulfillment in the romantic relations is made by:

- gender
- age
- duration of the relationship
- psychodynamics traits
- relation to himself
- authenticity

# Research problem

*shortly*

What contribution to the existential fulfillment in the romantic relations is made

by psychodynamics  
and

by noodynamiks?

# The main hypothesis

The attitude towards himself, alienation from himself and steady traits of character are equivalent predictors of an existential fulfillment in close interpersonal relations between man and woman.

# *Derivative hypothesis*

- the indicator of attitude towards himself and the level of existential fulfillment in relationships have direct interrelation;
- the level of subjective alienation and the level of existential fulfillment in relationships have inverse interrelation;
- indicators of steady traits of character (personal profile) and the level of existential fulfillment in relationships have inverse interrelation

# Research methods

(Russian versions)

- Test of Existential Motivations in Interpersonal Relationships (TEMIR - Ukolova, Shumskiy, Osin, 2014);
- Satisfaction With Life Scale (SWLS - Diener, Emmons, Larsen, Griffin, 1985);
- Subjective Happiness Scale (SHS - Lyubomirsky, Lepper, 1999);



# Research methods

(Russian versions)

- The questionnaire of attitude towards himself (Stolin, Pantileev, 1985);
- The Alienation Test (Maddi, Kobasa, Hoover, 1980);
- Mini-Mult - short version of MMPI, Minnesota Multiphasic Personality Inventory (Kincannon, 1968)

# Sample

264 respondents:

85 males (32%)

179 females (68%)

an age range between 18 and 54

(M= 24.91)

which are in close relationship with a particular person of the opposite sex lasting more than six months



# Sample

Duration of relationships (months):

min: 6

Max: 336

Mean: 46,5

Median: 36

# Results

# Interrelations

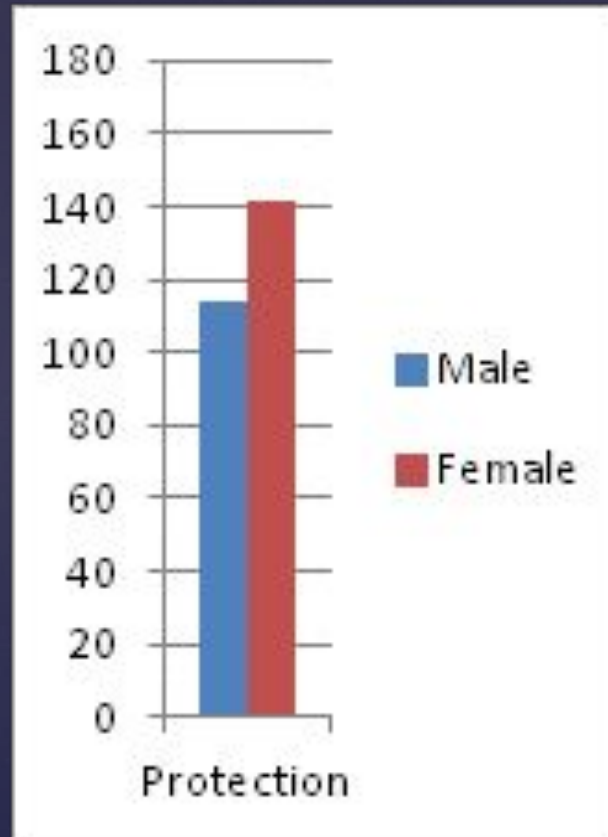
	Existential Fulfillment in interpers. Relat. (Efir)		
	Correlation coefficient	Significance (2-tailed)	N
Exis. Fulfillment IR	1		264
Satisfaction with Life	0,649**	0,000	264
Happiness Scale	0,502**	0,000	264
Self-relation General	0,410**	0,000	264
Alienation General	-0,471**	0,000	264
Hypochondriasis	-0,282**	0,000	264
Depression	-0,434**	0,000	264
Hysteria	-0,420**	0,000	264
Psychopathia	-0,479**	0,000	264
Paranoia	-0,382**	0,000	264
Psychasthenia	-0,403**	0,000	264
Schizophrenia	-0,363**	0,000	264
Hypomania	-0,139*	0,024	264

\*\* 0,01 significance

\*0,05 significance

# Gender differences

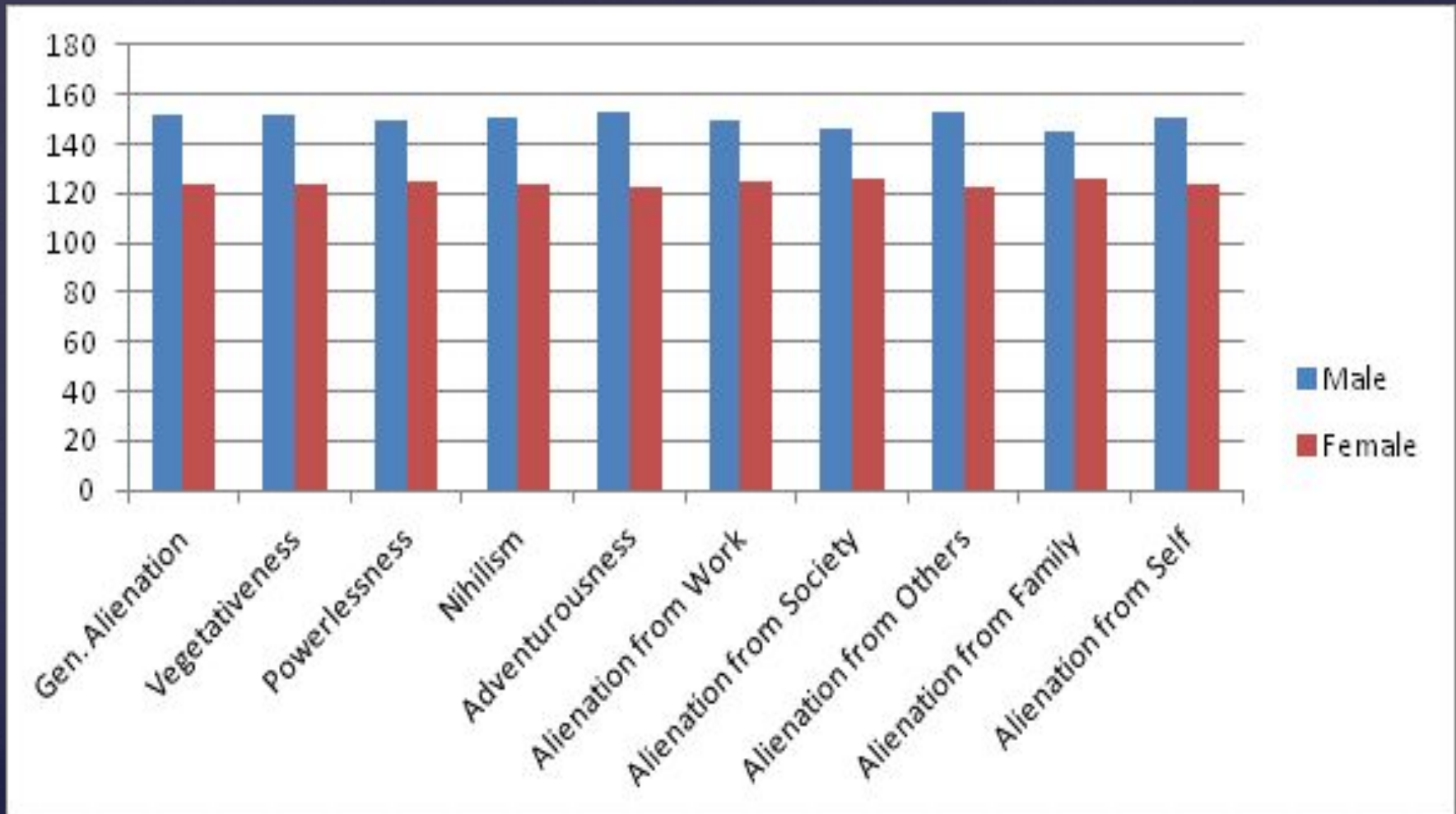
comparison of average ranks by Mann-Whitney criterion



TEMIR

# Gender differences

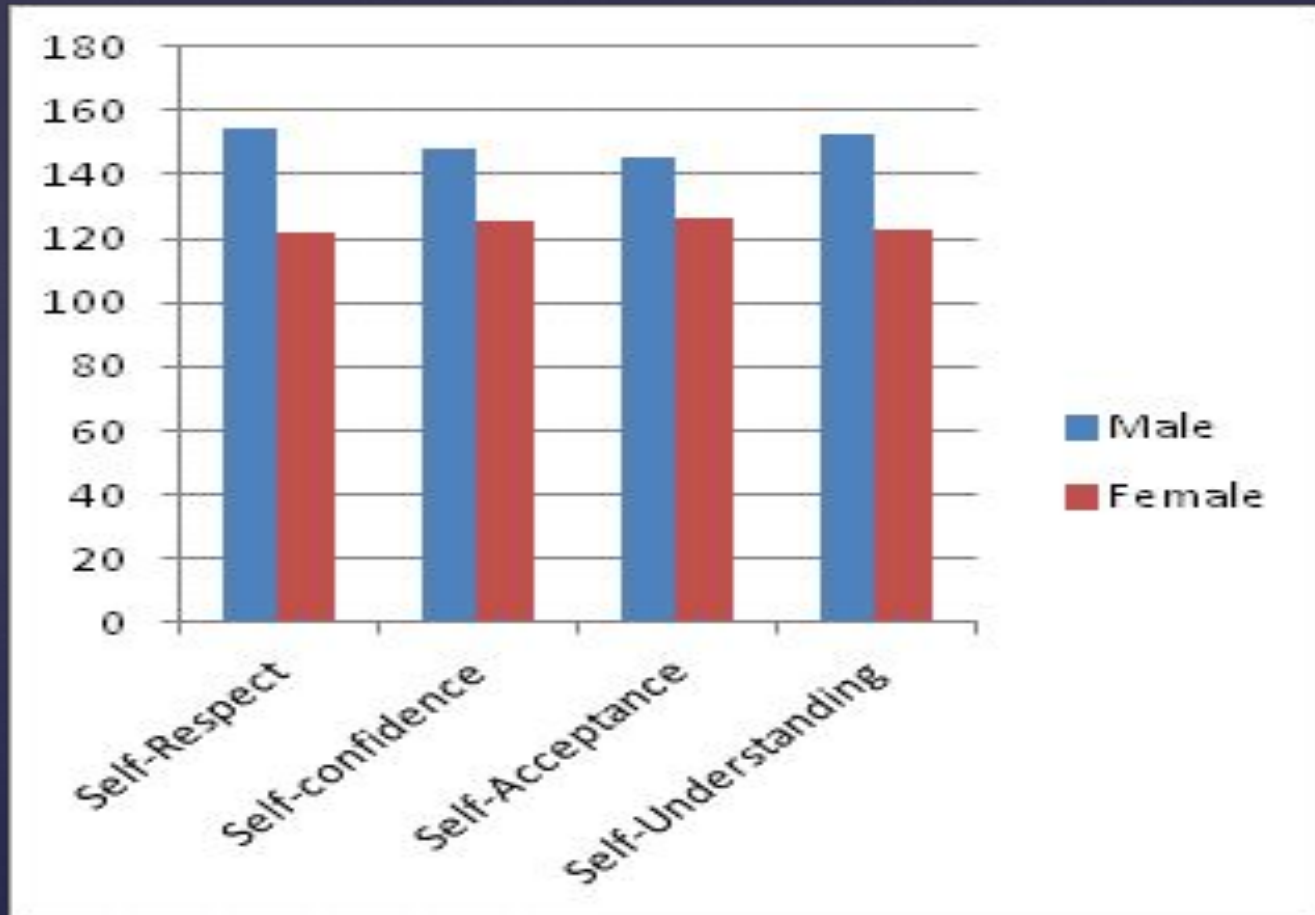
comparison of average ranks by Mann-Whitney criterion



Alienation Test

# Gender differences

comparison of average ranks by Mann-Whitney criterion

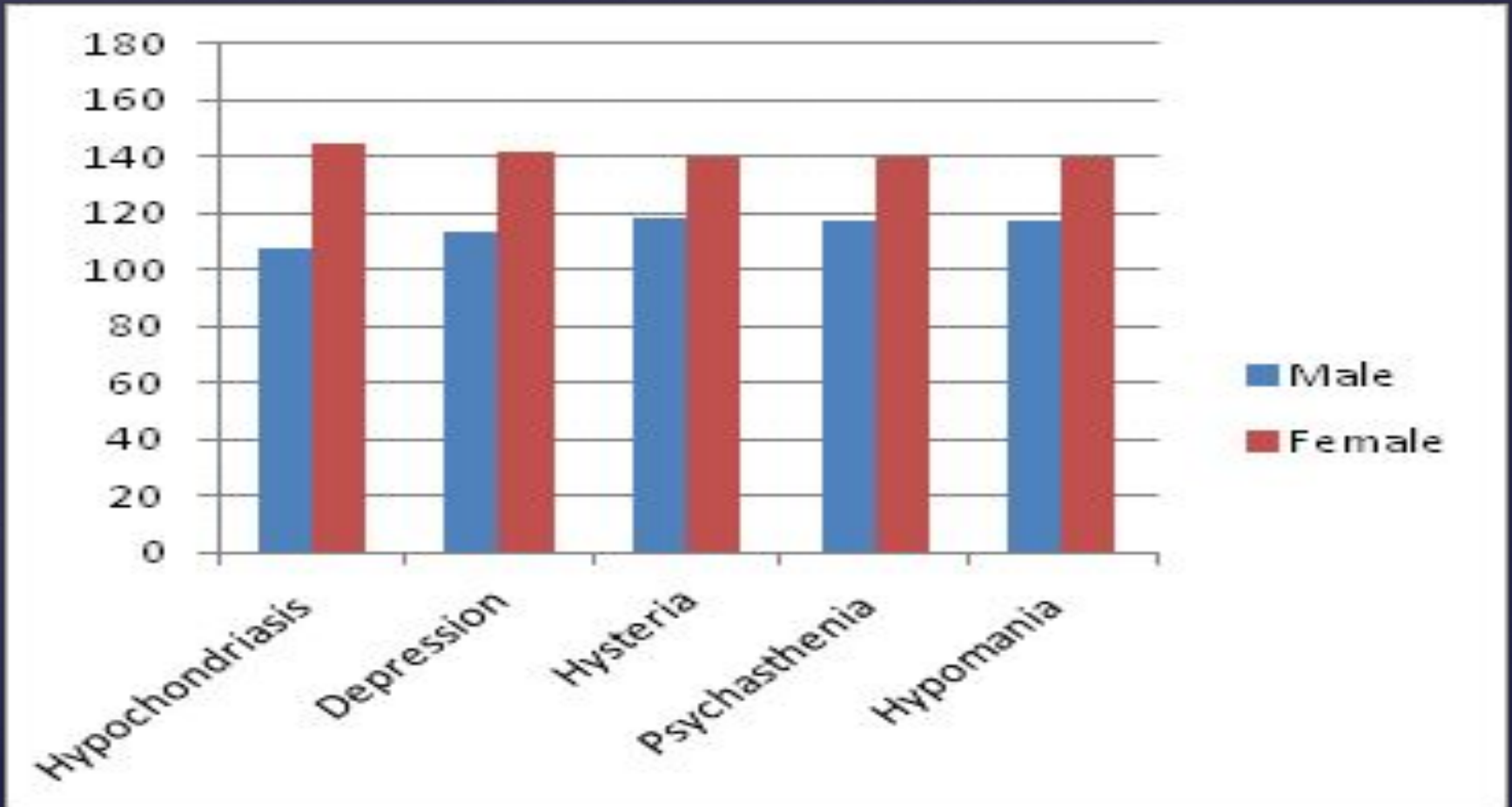


The questionnaire of attitude towards himself



# Gender differences

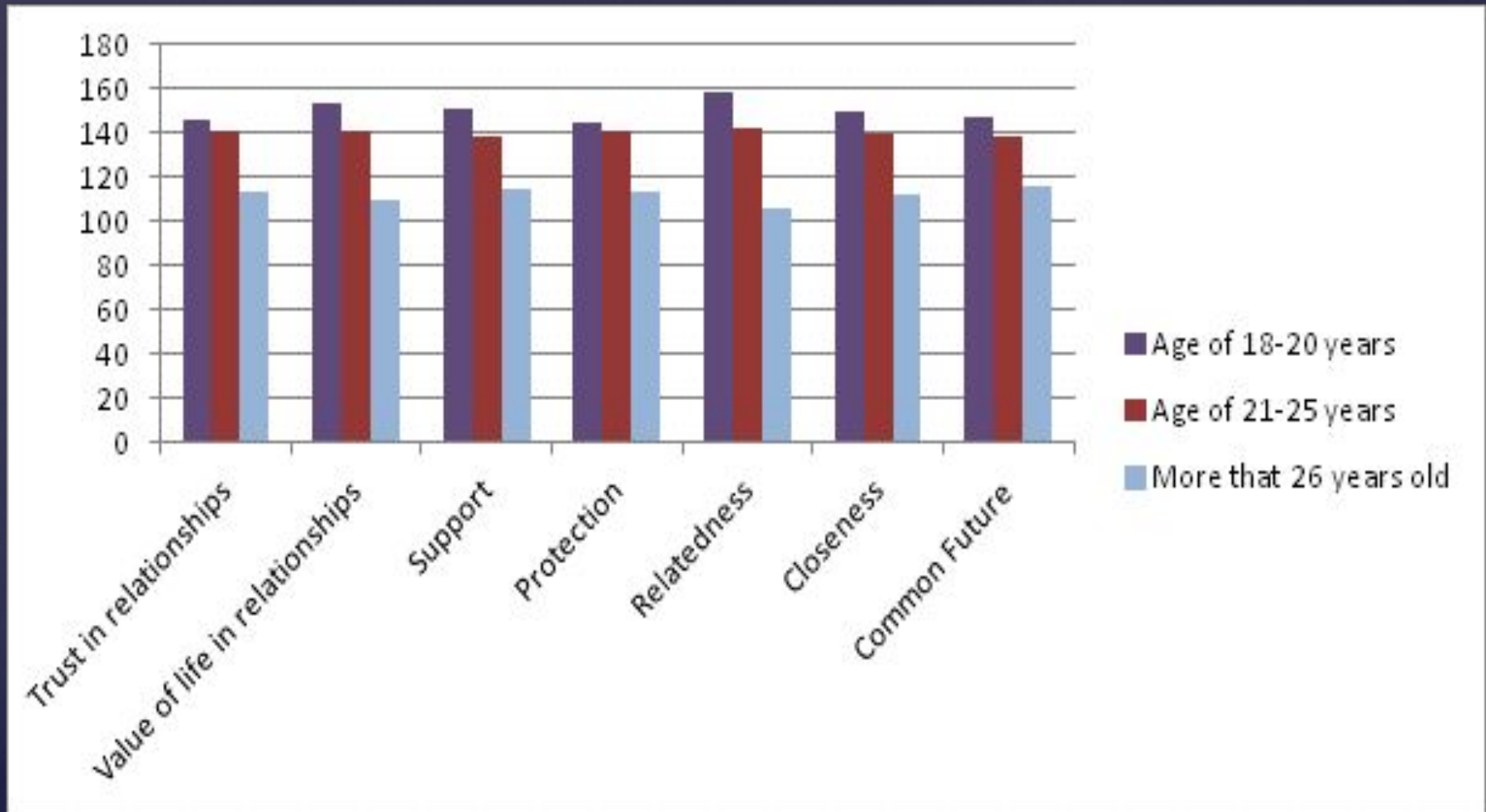
comparison of average ranks by Mann-Whitney criterion



MINI-MULT (short version of MMPI)

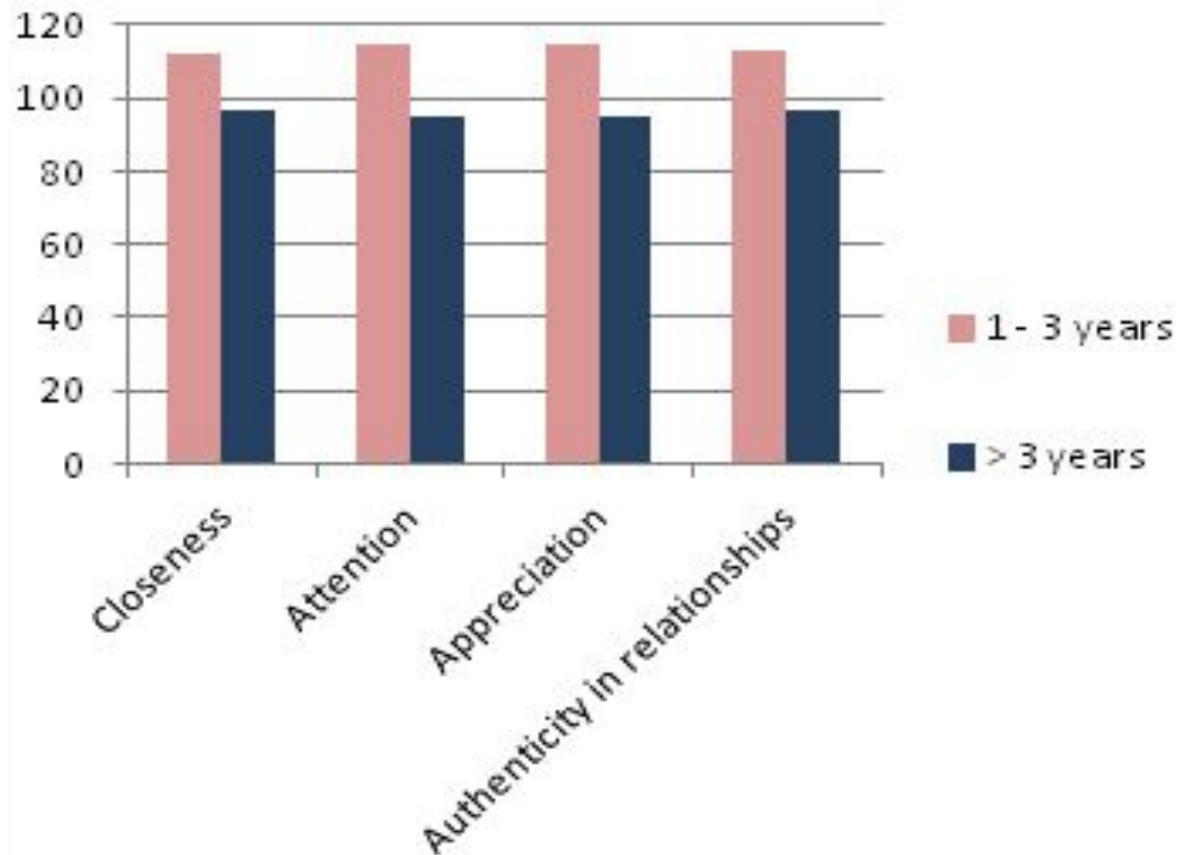
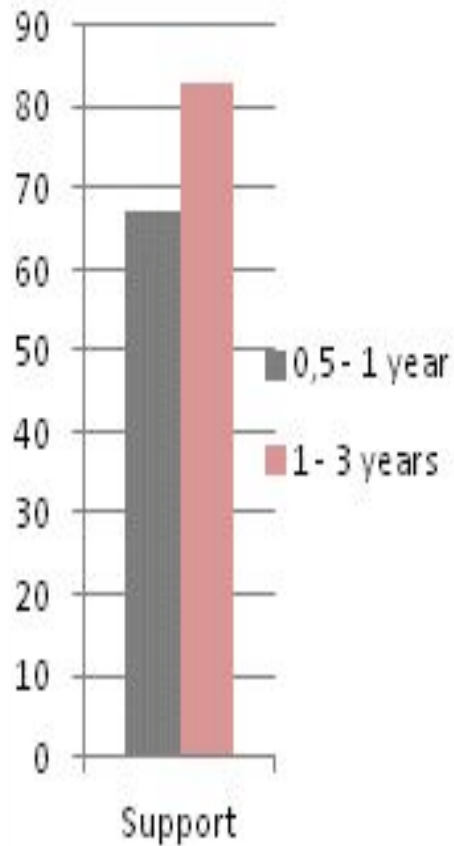
# Age differences

comparison of average ranks by Kruskal-Wallis test



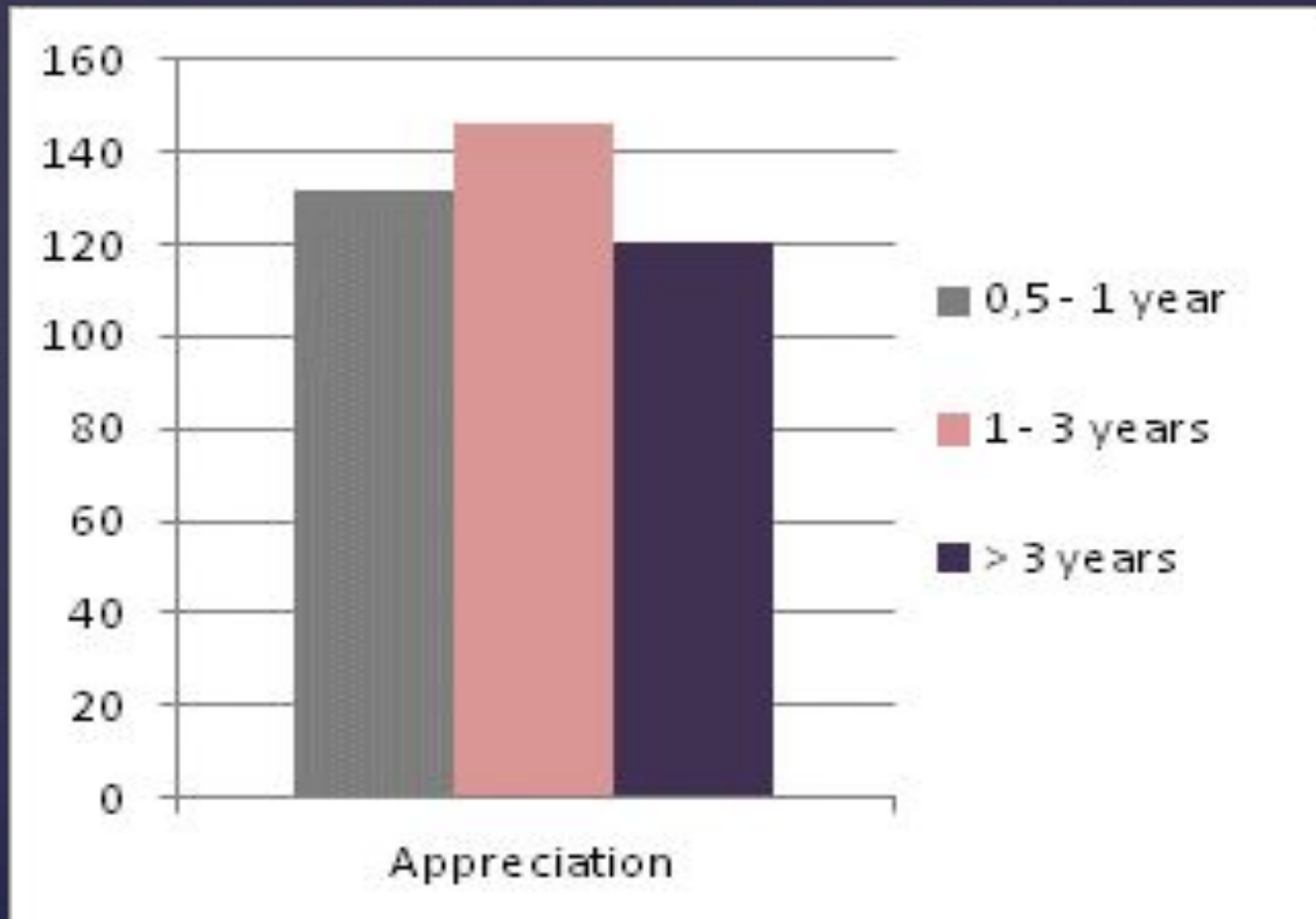
# Duration of the relationships differences

comparison of average ranks by Mann-Whitney criterion



# Duration of the relationships differences

comparison of average ranks by Kruskal-Wallis test



TEMIR

# Regression analysis

Method: Standard

**Dependent Variable:** Existential Fulfillment in Interpersonal Relat. General (Efir)

3 groups of **Predictors:**

1. Gender, Age, Duration of the relationship

2. Alienation General, Self-relation General

3. Psychodynamics traits (Mini-Mult) –

Hypochondriasis, Depression, Hysteria, Psychopathia,

Paranoia, Psychasthenia, Schizophrenia, Hypomania

# Regression analysis: Stage 1

## Predictor

	Gender, Age, Durat. of Rel.	Alienation General, Self-relation General	Psychodynamics traits (Mini-Mult)
R Square	0,018	<b>0,333</b>	<b>0,432</b>
R Square change	0,018	<b>0,315</b>	<b>0,099</b>
F change	1,179	13,136	5,273
Significance	0,321	<b>0,000</b>	<b>0,000</b>

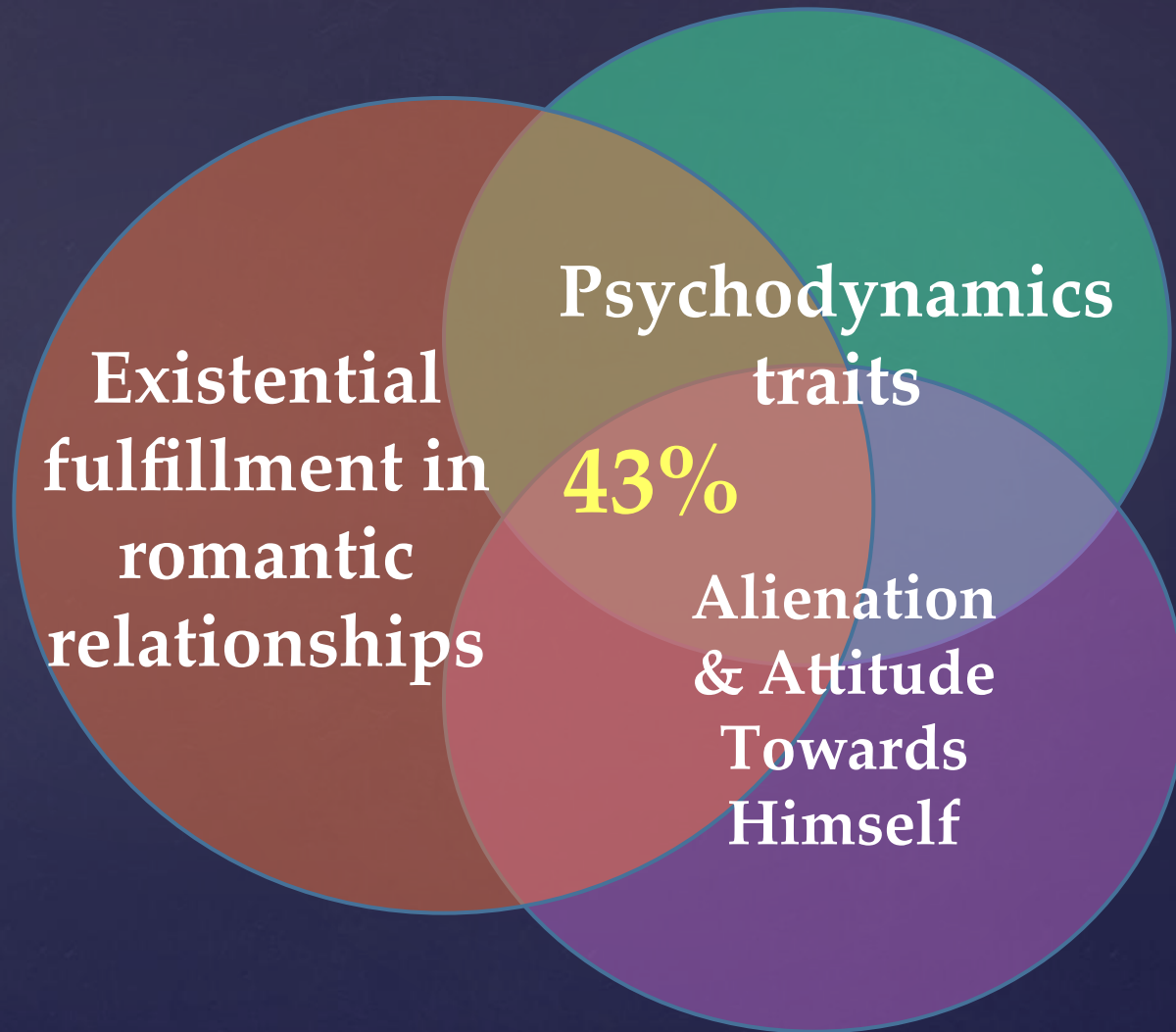


# Regression analysis: Stage 2

## Predictor

	Gender, Age, Durat. of Rel.	Psychodynamics traits (Mini-Mult)	Alienation General, Self-relation General
R Square	0,018	<b>0,329</b>	<b>0,432</b>
R Square change	0,018	<b>0,312</b>	<b>0,103</b>
F change	1,179	14,577	4,866
Significance	0,321	<b>0,000</b>	<b>0,000</b>

# Predictors of existential fulfillment in romantic relationships



Thank you for attention!