



Christmas in Great Britain



Read the new words:

Christmas tree



Christmas Eve



Yule Log



The Nativity Play



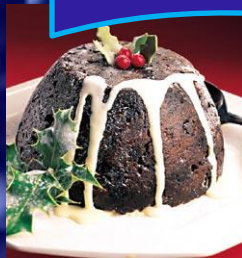
Waits and carols



Robin



Christmas pudding



Read the new words:

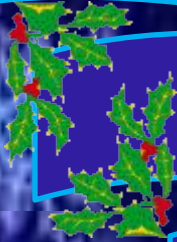
Christmas Turkey



Mince Pies



Holly



Mistletoe

Candles



Crackers



Santa Claus



Christmas Day

Christmas Day is on the 25th of December. It is the greatest holiday in Britain. English people celebrate this holiday with big dinners. Children have a lot of fun. They play under Christmas trees, find presents in their Christmas stockings, eat Christmas pudding, watch pantomimes. The grown-ups don't work on that day.



Robin



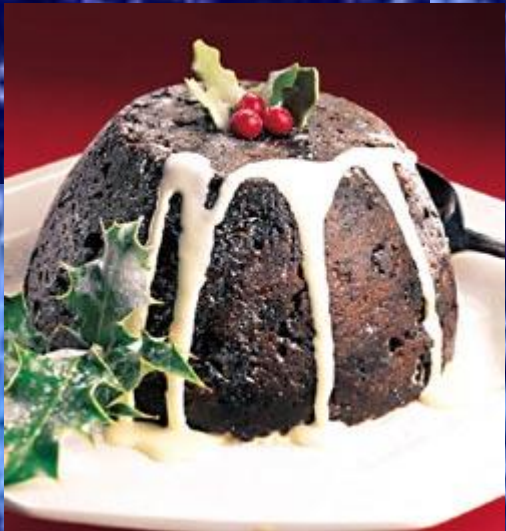
Many years ago postmen had bright red coats. They looked like robins. At Christmas they brought many Christmas cards. And people began to think about a robin as a Christmas bird. You can see it on almost every Christmas card.

Christmas Cards



Every English family sends and receives many Christmas cards. Traditionally there is a robin on almost every card. And you know already that a robin is a Christmas bird. Sometimes there is a bunch of holly on the Christmas card. You can read on the card: "Merry Christmas!"

Christmas Pudding



Christmas pudding was first made many, many years ago. Now it is the highlight of Christmas dinner. Children often put holly on the pudding. Traditionally a coin is placed into the pudding. It brings luck to a person who finds it.



Santa Claus

Who's got the beard that's long and white?

Santa's got the beard that's long and white.

Who comes around on a special night?

Santa comes around on a special night.

Special night, beard that's white.

Must be Santa, must be Santa, must be Santa, Santa Claus.



Quiz

1. When do English people celebrate Christmas?



2. What day comes after Christmas?



3. What day is before Christmas?

Christmas Eve



4. What bird is it?



Robin

5. What plant is it?



Holly

6. What do English people have for Christmas dinner?



Christmas turkey

