



Пояснительная записка

Вспомогательный глагол to be. Введение нового материала

Одним из самых трудных моментов при обучении английскому языку на начальном этапе является объяснение спряжения английского глагола "to be". Качество усвоения учебного материала учащимися зависит от того, как подается материал. Использование различных упражнений - один из наиболее подходящих способов объяснения учащимся английской грамматики. Используя компьютер, LCD-проектор и заранее подготовленный на Microsoft PowerPoint слайды, можно добиться эффективного усвоения нового материала. Урок разработан для изучения учащимися 5-х классов спряжения глагола "to be".

LIVE AND LEARN
WELCOME!!!

Be – Present Simple

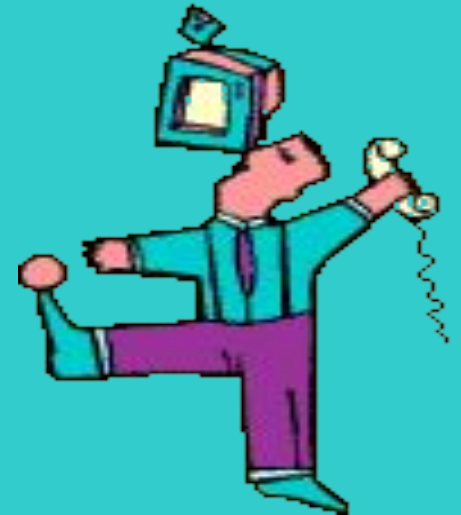
Pay attention to the forms
of the verb ***to be*** !



BE A CLOWN



Be a clown, *be* a clown
Some are big, some are small,
They can do anything at all
Be a clown, *be* a clown.



Who are you ?



1.«Hello, I **am** Tom! Who **are** you?

2. «Hi, we **are** Alison and Robert. I **'m** Scottish. He **'s** English. We **'re** great friends»



1. «These **are** my dog and my cat. They **are** very clever. They **'re** friends too»



Complete the table for column + ?.

AM/IS/ARE



+	?
I <i>am</i> (I` <i>m</i>)	<i>Am</i> I?
He
She <i>is</i> (she` <i>s</i>)
It	<i>Is</i> it?
We	<i>Are</i> we?
You <i>are</i> (you` <i>re</i>)
They	<i>Are</i> they?

Complete the table for column -.
AM/IS/ARE

I **am** (**`m**) not

.....

.....

It **is** not (**isn`t**)

We **are** not (**aren`t**)

.....

They **are** not (**aren`t**)



Grammar: there *is/are*.

Look, say and write.

There **is** a Teddy Bear
on the table.



There **are** two Teddy Bears
on the table.



How many Teddy Bears *are there* on the table?





How many balloons *are there* ?



TO BE. YES/NO QUESTIONS.

■ **Is** Tom from London?

■ Yes, he **is**./No, he **isn't**.



■ **Are** these flowers?

■ Yes, these **are** flowers.

■ **Are** these blue flowers?

■ No, they **are** not.

■ They **are** red and white.



THE TEDDY BEAR SONG

Where, oh where

Is my teddy bear?

Is he in the living room?

Is he in the pink bathroom?

Where, oh where

Is my teddy bear?

In the kitchen, on the chair?

In my favourite blue armchair?

Where are you,

My little Ted?

Here you are,

In my bed!



WH QUESTIONS

1. «Where is Tom from?»
2. «He is from London.
1. «Who is from London?»
2. «Tom is.»



OR QUESTIONS



1. «Is Tom from London
or not?»
2. He is from London.»

TAG QUESTIONS



«Tom is from London,
isn`t he?»»

FILL IN THE BLANKS.

- What ... your name?
- ...you ten years old?
- How old...you?
- What ...your brother`s name?
- ...he six or nine?
- He is a student,...n`t he?



You are brave!!!



5