

# DESERT

Арисова Дарья

Исламова Алиса

Мешкова Юля

Азбукина Дарья

5"В" класс

Учитель: Злобина

Ирина Григорьевна

# DESERT FACTS

---

## Sahara desert

The Sahara Desert is the largest desert in the world.

People often travel by camel.



# DESERT FACTS

---

## Gobi desert

The Gobi Desert is the coldest desert in the world.



# DESERT FACTS

---

Australian desert

Nearly half of Australia is a desert.



You can see kangaroos there.



# DESERT FACTS

---

## Arabian desert

The Arabian Desert has the most sand and lots of sand dunes.



# DESERT FACTS

---

## Turkestan Desert

There is lots of oil in the Turkestan Desert



# DESERT FACTS

---

## Kalahari Desert

San people live in the Kalahari Desert  
in  
Southern Africa.



# KALAHARI DESERT

---

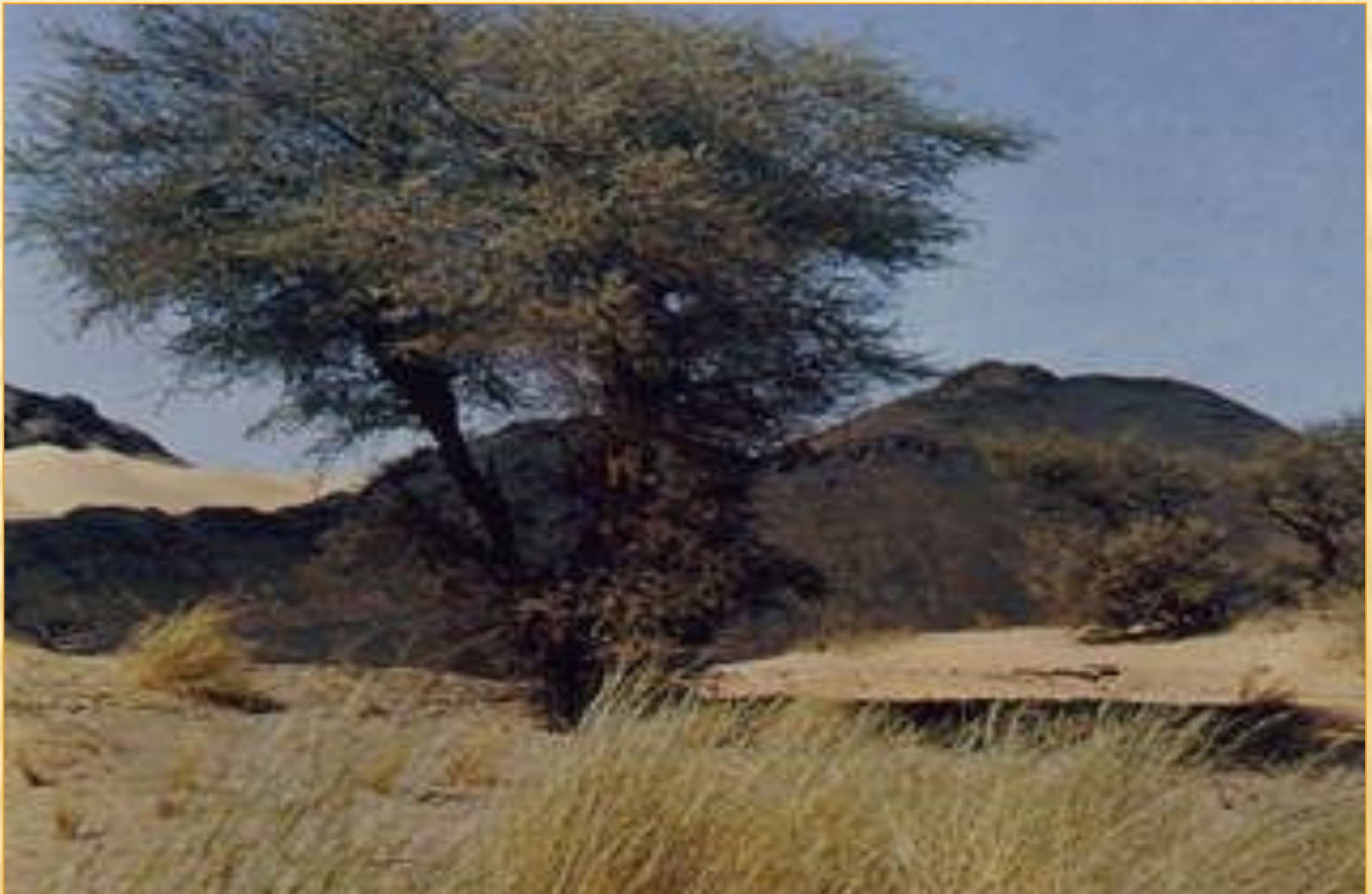
The Kalahari Desert is a large arid sandy area in Southern Africa. It extends 900,000 square kilometres, covering much of Botswana and parts of Namibia and South Africa. The Kalahari supports some animals and plants because most of it is not a true desert. There are small amounts of rainfall and the summer temperature is very high.



# KALAHARI DESERT

---

Previously havens for wild animals from elephant to giraffe. For predators such as lion and cheetah. The riverbeds are now mostly grasing spots. The Kalahari Desert was once a much wetter place. The Kalahari supports a variety of fauna and flora. The native flora includes acacia trees and many other herbs and grasses. In the rainy season, tens of thousands of flamingos visit these pans. The Kalahari has a number of game reserves – the Central kalahari Game Reserve, the world's second largest protected aria. Animals that live in the rigion include brown hyenas, lions, giraffes, jackals, antelope and many of birds and reptiles.



Acacia tree



Elephants



Giraffes



Lions



Cheetahs



Flamingos



Hyenas





Jackals



Antelopes