

SALAR DE UYUNI

ΣΑΛΑΡ ΔΕ ΟΥΝΙ

Made by: Gordienko I., Golubeva A.
PGSGA
04.11

CONTENTS

formation of the lake

geology and climate

economic influence

name

flora and fauna

tourism

- Hotels
- Train cemetery

FORMATION

Lake Minchin (30,000 years ago)

Lake Tauca (13,000 years ago)

Coipasa (11,500 years ago)

Poopó Lake

Uru Uru Lake

Salar de Coipasa

Salar de Uyuni

GEOLOGY



CLIMATE

- stable average temperature:
 - in January 21 °C
 - in June 13 °C
- cold nights
 - between -9 and 5 °C
- the rainfall is low
 - except for January

ECONOMIC INFLUENCE

Contains:

- sodium
- potassium
- lithium
- magnesium
- borax



contains about **50%** of the world's lithium reserves

NAME

salar -
salt flat

+

=

uyuni -
a pen (enclosure)

a salt flat
with
enclosures



FLORA



Giant Cacti

FLORA

Thola



Quinoa



FAUNA



Flamingos

FAUNA



**Horned
Coot**

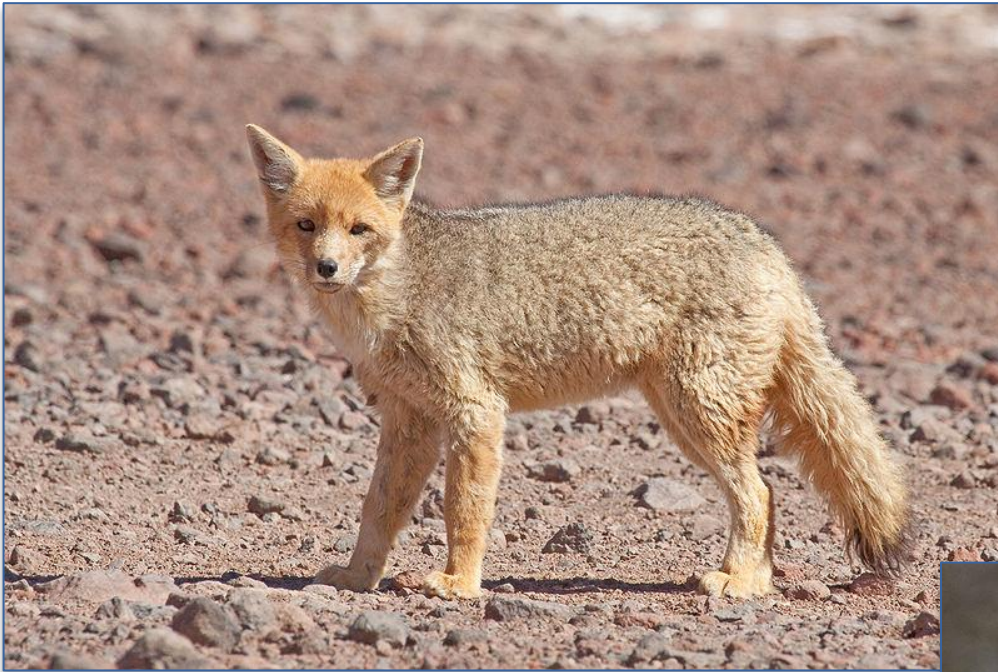


**Andean
Goose**



**Andean
Hillstar**

FAUNA



Culpeo

Viscacha



TOURISM: HOTELS



TOURISM: HOTELS



TOURISM: TRAIN CEMETERY





»» **Thanks**
for your
attention!