

SEATTLE

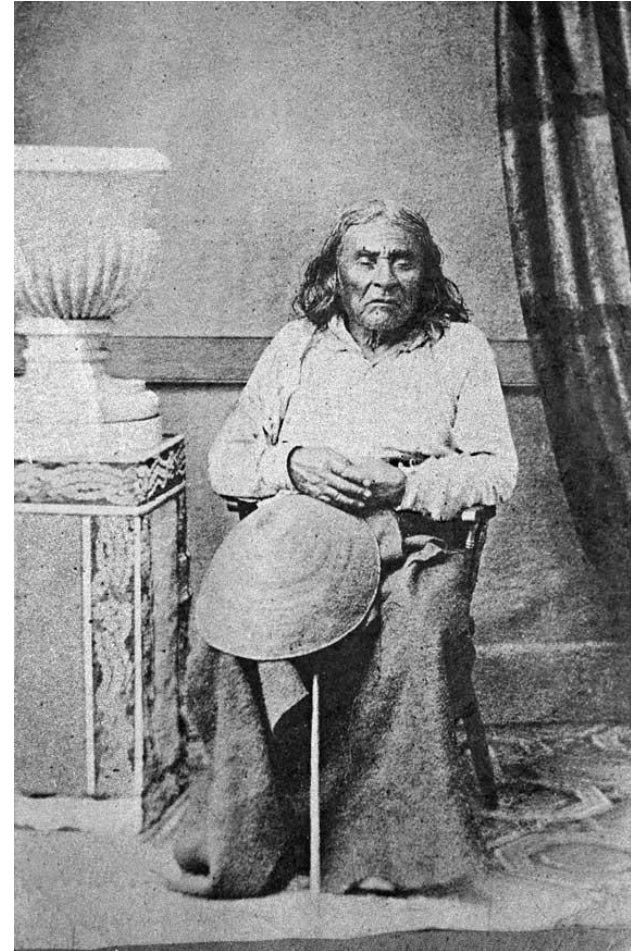
COMPLETED THE SECOND YEAR STUDENT
GROUP 2273 ERSHOVA SAMANTHA

Seattle is the largest city in the North-Western U.S. and in Washington state in particular, a major sea port. The city is the administrative center of King County. Located between Puget sound and lake Washington.

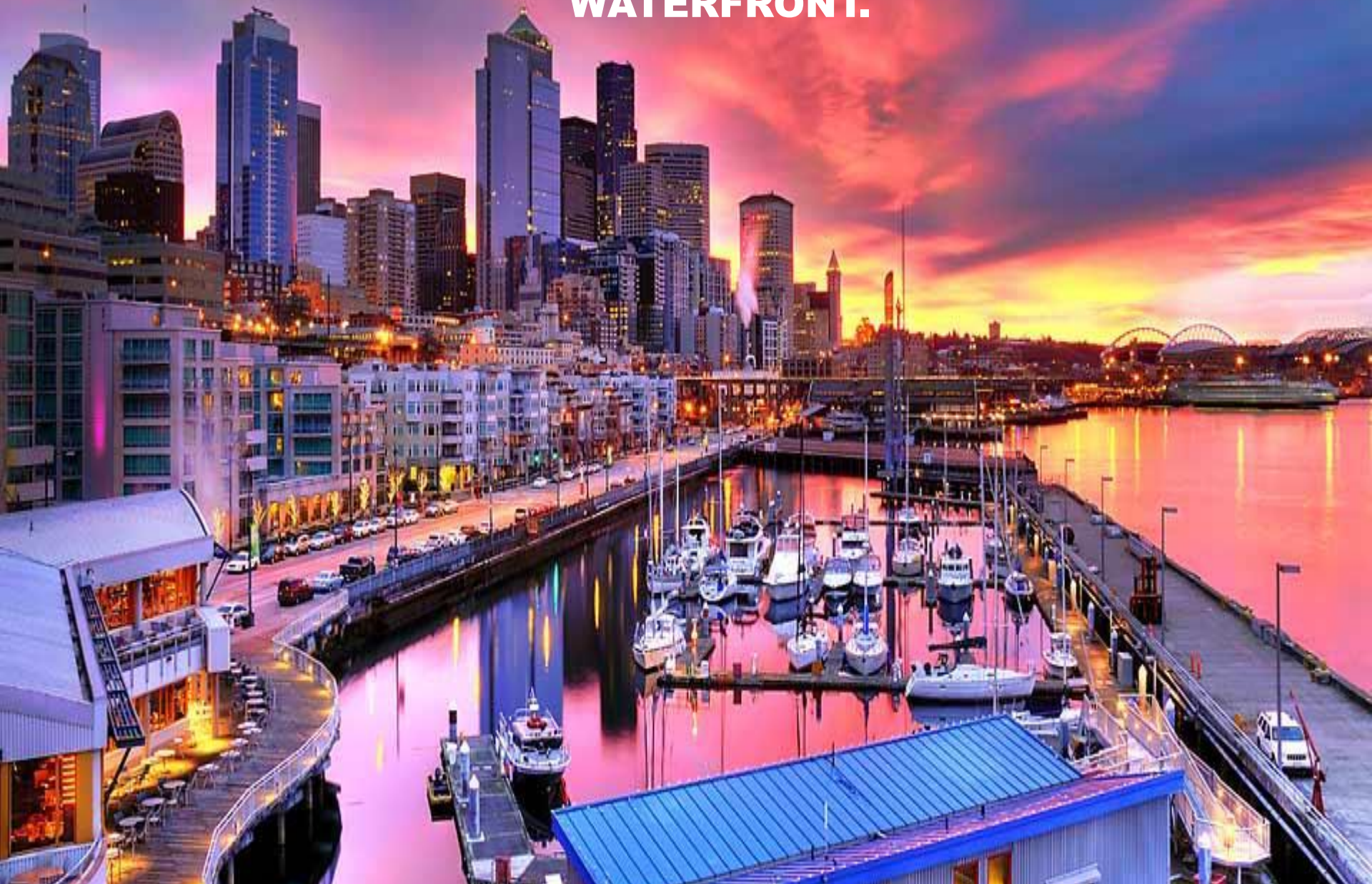
THE HISTORY OF SEATTLE

The first white settlers was a group of Collins, who tried to stake a claim at the mouth of the river Duwamish September 14, 1851. However, despite the fact that they were the first on the site, the land was able to write to the scout group Danny, what happened on 28 September 1851. In this circumstance, the head scout David Denny, sent a message to Portland, where the other members where encouraged to come to the settlement as soon as possible and all together. It occurred on 15 November, a group led by Arthur Denny came across the ocean and found the patient, the David and the unfinished winter. The settlement was named Alki point.

After the first winter, marked by frequent showers and strong winds, almost the entire group Danny moved to a new place, which was called Duwamps or Duwamps. Remaining at the old place, the settlers renamed the village in new York Alki. In the next few years the two villages vied for the site of the main settlement, however, eventually won Duwamps. Since 1853 one of the founders of Duwamps, David Maynard campaigned for the renaming of Duwamps in Seattle, in appreciation to the leader of Cially, the main proponent of the cooperation of the Indian population of the North-Western United States with white colonists. This campaign came to fruition pretty soon, in 1855, the settlement was given the status of a city called Seattle.



THE DOWNTOWN SEATTLE AND FERRY AT THE CENTRAL WATERFRONT.



THE CITY IS SITUATED ON HILLY TERRAIN, BUT THE LANDSCAPE IS NOT MONOTONOUS. THEY SAY THAT SEATTLE, LIKE ROME, LIES ON SEVEN HILLS: CAPITOL HILL, FIRST HILL, WEST SEATTLE, BEACON HILL, QUEEN ANNE HILL, MAGNOLIA HILL, AND THE DENNY HILL.





SINCE 1869 THE UNOFFICIAL NICKNAME OF THE CITY WAS "THE ROYAL CITY", OR RATHER "THE QUEEN CITY", WHICH COMES FROM THE "PACIFIC QUEEN OF CITIES", SO CALLED THE SEATTLE TO PORTLAND ONE REAL ESTATE AGENCY, HOWEVER IN 1982 THE OFFICIALS OF KING COUNTY (WHICH IS OWNED AND SEATTLE) HELD AN OFFICIAL COMPETITION FOR THE UNOFFICIAL NICKNAME, THE RESULT OF WHICH WAS CHOSEN THE TITLE "THE EMERALD CITY". THE STREAM OF NEW SOFTWARE ARE THE "GATEWAY TO ALASKA", "RAIN CITY" AND "JET CITY" (THANKS TO BOEING). FROM THE NAME OF THE INHABITANTS OF SEATTLE CAN BE TRANSLATED AS "SETLITE".

SEATTLE

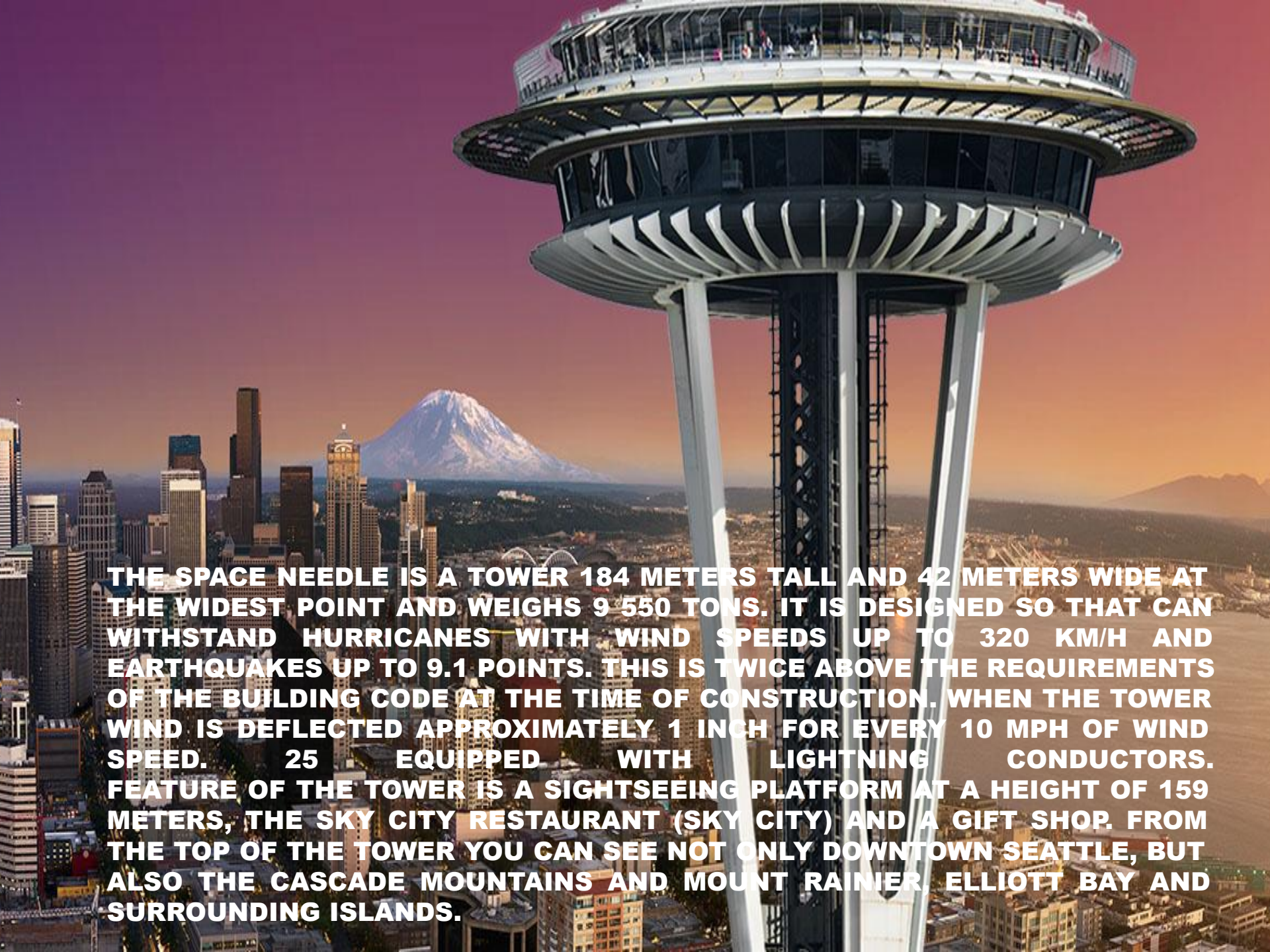


NORTH
SEATTLE
COMMUNITY
COLLEGE



SEATTLE IS KNOWN FOR MANY ACHIEVEMENTS, AMONG WHICH ARE THE FOLLOWING: THE BIRTHPLACE OF GRUNGE, THE CULTURE OF CONSUMPTION OF COFFEE (AMERICAN COFFEE, MANY NETWORKS WERE BASED IN SEATTLE), HIGH LEVEL OF EDUCATION AMONG THE INHABITANTS (MORE THAN 51 % OF THE POPULATION OF SEATTLE HAD HIGHER EDUCATION).

... YOU'RE WELCOME



THE SPACE NEEDLE IS A TOWER 184 METERS TALL AND 42 METERS WIDE AT THE WIDEST POINT AND WEIGHS 9 550 TONS. IT IS DESIGNED SO THAT CAN WITHSTAND HURRICANES WITH WIND SPEEDS UP TO 320 KM/H AND EARTHQUAKES UP TO 9.1 POINTS. THIS IS TWICE ABOVE THE REQUIREMENTS OF THE BUILDING CODE AT THE TIME OF CONSTRUCTION. WHEN THE TOWER WIND IS DEFLECTED APPROXIMATELY 1 INCH FOR EVERY 10 MPH OF WIND SPEED. 25 EQUIPPED WITH LIGHTNING CONDUCTORS. FEATURE OF THE TOWER IS A SIGHTSEEING PLATFORM AT A HEIGHT OF 159 METERS, THE SKY CITY RESTAURANT (SKY CITY) AND A GIFT SHOP. FROM THE TOP OF THE TOWER YOU CAN SEE NOT ONLY DOWNTOWN SEATTLE, BUT ALSO THE CASCADE MOUNTAINS AND MOUNT RAINIER, ELLIOTT BAY AND SURROUNDING ISLANDS.

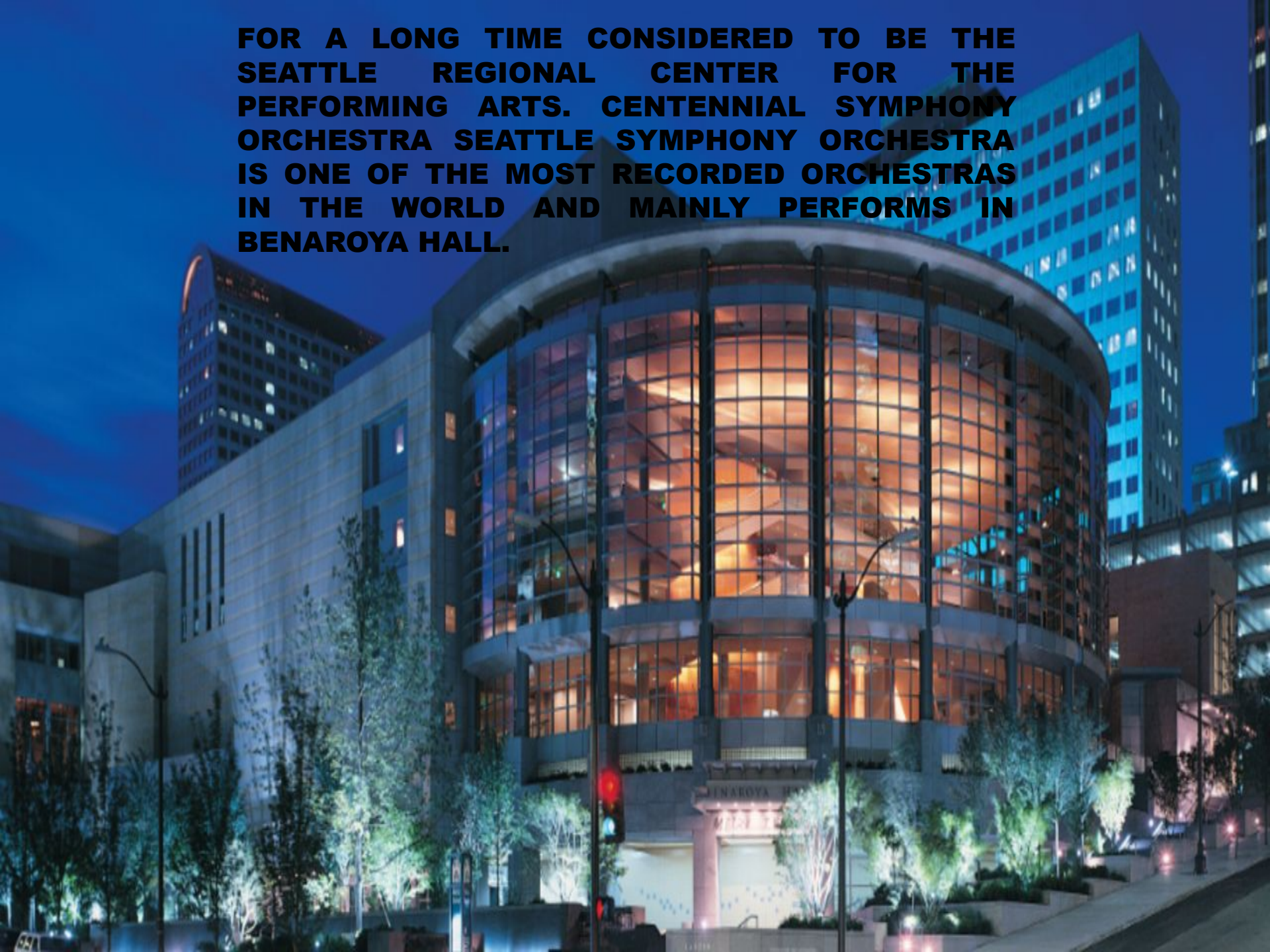
A nighttime photograph of the Pike Place Market Public Market Center. The main sign is illuminated in red neon, with the words 'PUBLIC MARKET CENTER' stacked vertically. To the right of the sign is a large, illuminated clock face. Above the building on the right is a sign that reads 'MEET THE PRODUCER'. In the foreground, there are festive light decorations, including a large carrot-shaped light sculpture and a tree-shaped light sculpture. The sky is dark blue, and the overall scene is vibrant with city lights and holiday decorations.

PUBLIC MARKET CENTER

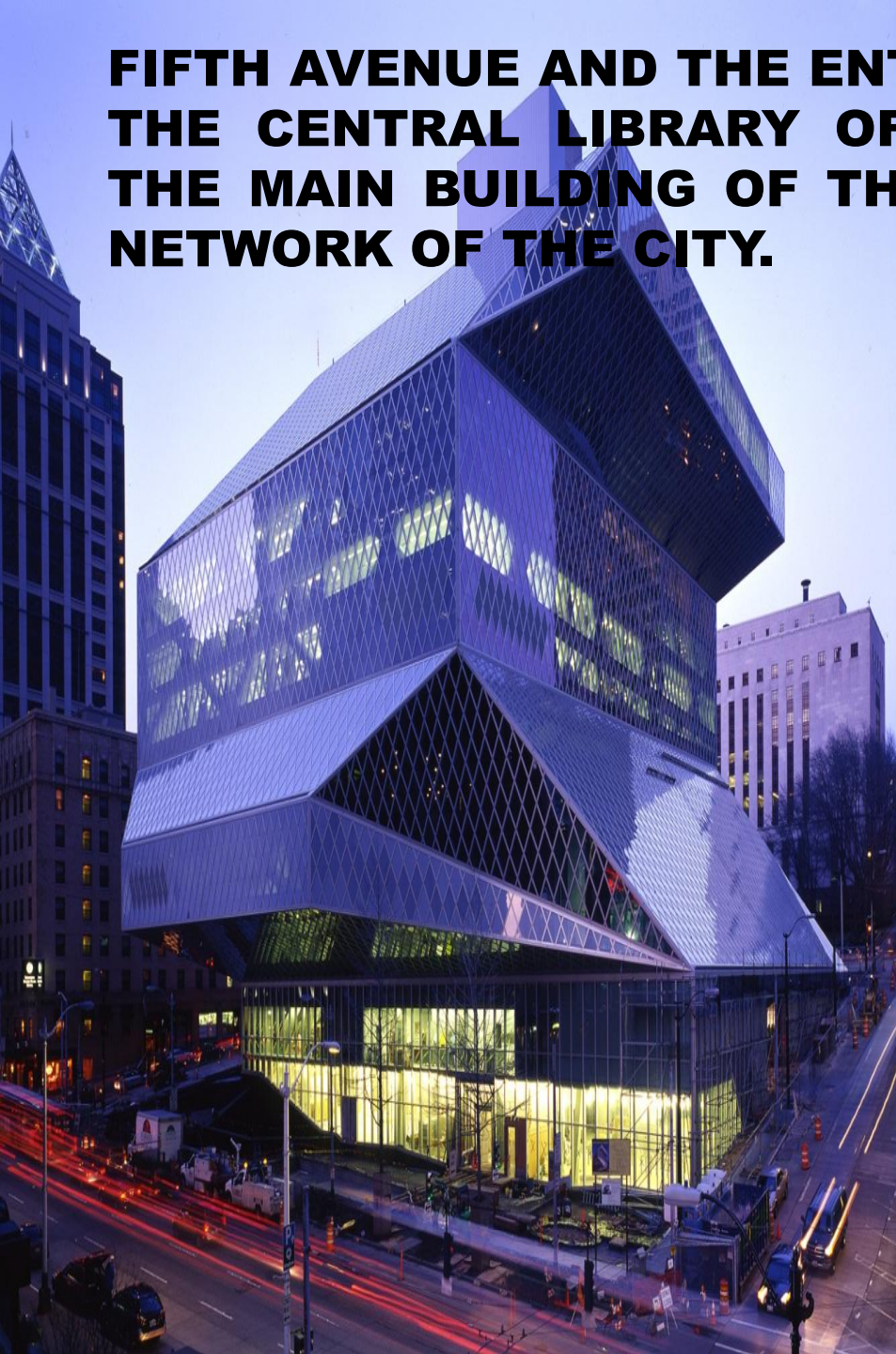
MEET THE PRODUCER

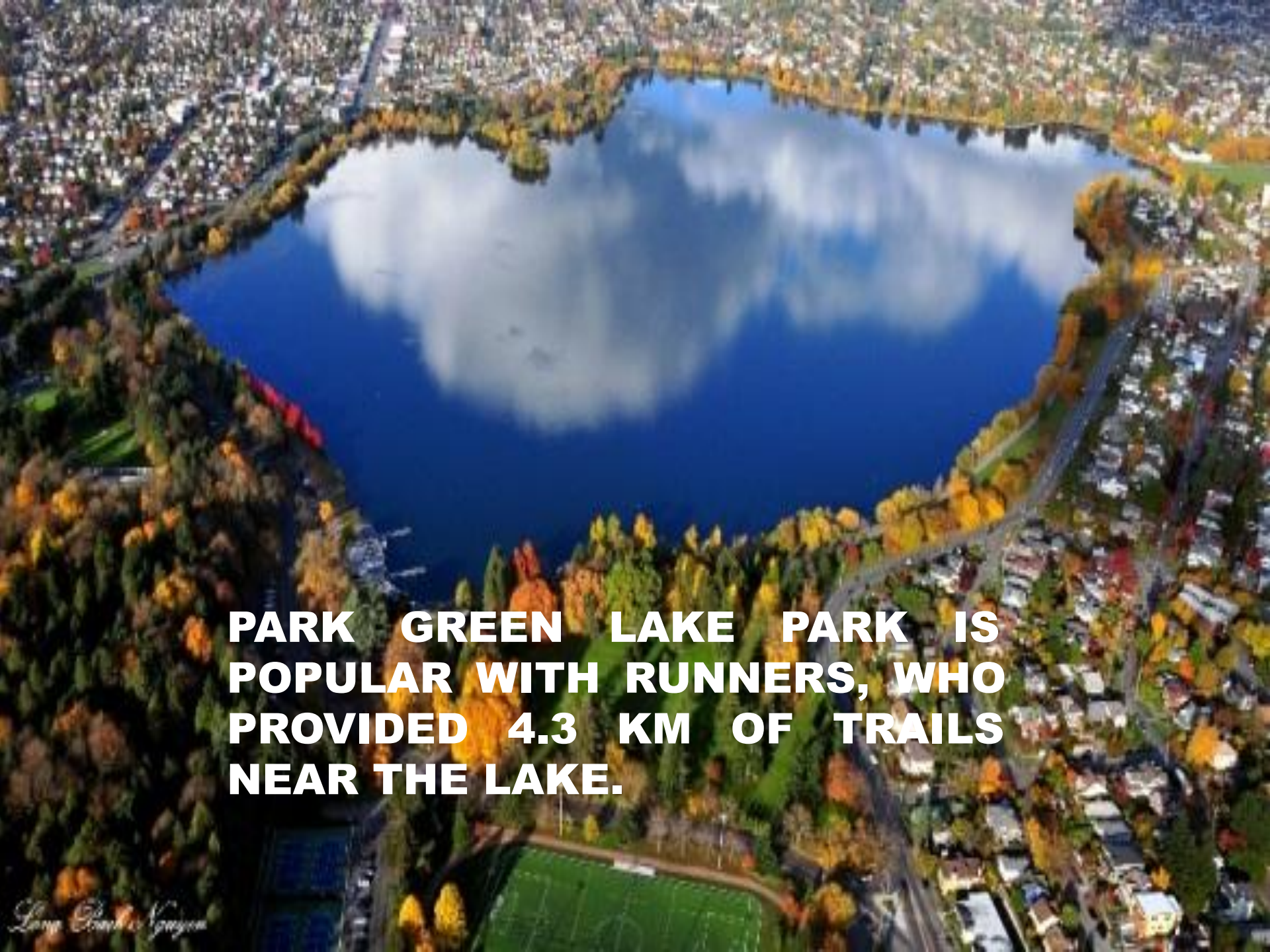
THE PIKE PLACE MARKET PUBLIC MARKET, LOCATED ON THE PACIFIC COAST OF ELLIOT BAY IN SEATTLE, WASHINGTON, USA, OPENED ON AUGUST 17, 1907, IT IS ONE OF THE OLDEST CONTINENTAL U.S. MARKETS. PIKE PLACE MARKET — THE MARKET SEAFOOD AND AGRICULTURAL PRODUCE OF SMALL FARMERS AND ARTISANS. ALSO ACTS AS A KIND OF STAGE FOR STREET PERFORMERS, CLOWNS AND SINGERS, THAT, APPARENTLY, IS THE REASON FOR ITS GREAT POPULARITY AMONG TOURISTS FROM ALL OVER THE WORLD. PIKE MARKET IS LOCATED IN DOWNTOWN SEATTLE AND IS SITUATED ON 9 ACRES. THE NAME OF THE MARKET GOT THROUGH THE HOMONYMOUS STREET, IN WHICH IS A PIKE PLACE.

FOR A LONG TIME CONSIDERED TO BE THE SEATTLE REGIONAL CENTER FOR THE PERFORMING ARTS. CENTENNIAL SYMPHONY ORCHESTRA SEATTLE SYMPHONY ORCHESTRA IS ONE OF THE MOST RECORDED ORCHESTRAS IN THE WORLD AND MAINLY PERFORMS IN BENAROYA HALL.



**FIFTH AVENUE AND THE ENTRANCE TO
THE CENTRAL LIBRARY OF SEATTLE,
THE MAIN BUILDING OF THE LIBRARY
NETWORK OF THE CITY.**



An aerial photograph of Green Lake Park in Seattle, Washington. The central feature is a large, dark blue lake that reflects the sky and surrounding trees. The lake is surrounded by a dense forest of trees in various shades of green, yellow, and orange, indicating autumn. A paved path runs along the edge of the lake, and a road is visible on the right side. The surrounding area includes residential buildings and parking lots. The text is overlaid in the lower-left quadrant of the image.

**PARK GREEN LAKE PARK IS
POPULAR WITH RUNNERS, WHO
PROVIDED 4.3 KM OF TRAILS
NEAR THE LAKE.**

SEATTLE PACIFIC IS LOCATED BETWEEN THE BAY OF PUGET SOUND ON THE WEST AND LAKE WASHINGTON ON THE EAST. THE MAIN PORT CITY SITUATED ON THE BANKS OF ELLIOTT BAY, BELONGING TO THE PUGET SOUND. TO THE WEST OF THIS BAY IS THE KITSAP PENINSULA AND OLYMPIC MOUNTAINS ON THE OLYMPIC PENINSULA.



EAST OF LAKE WASHINGTON AND SEATTLE SUBURBS ARE LAKE SAMMAMISH AND THE CASCADE MOUNTAINS. THE AREA, QUITE SUITABLE FOR ON SAILING YACHTS, SKIING, CYCLING, CAMPING AND LONG WALKS ON FOOT, IS AVAILABLE ALMOST THROUGHOUT THE YEAR.