

# *Kazakh-Russian medical university*

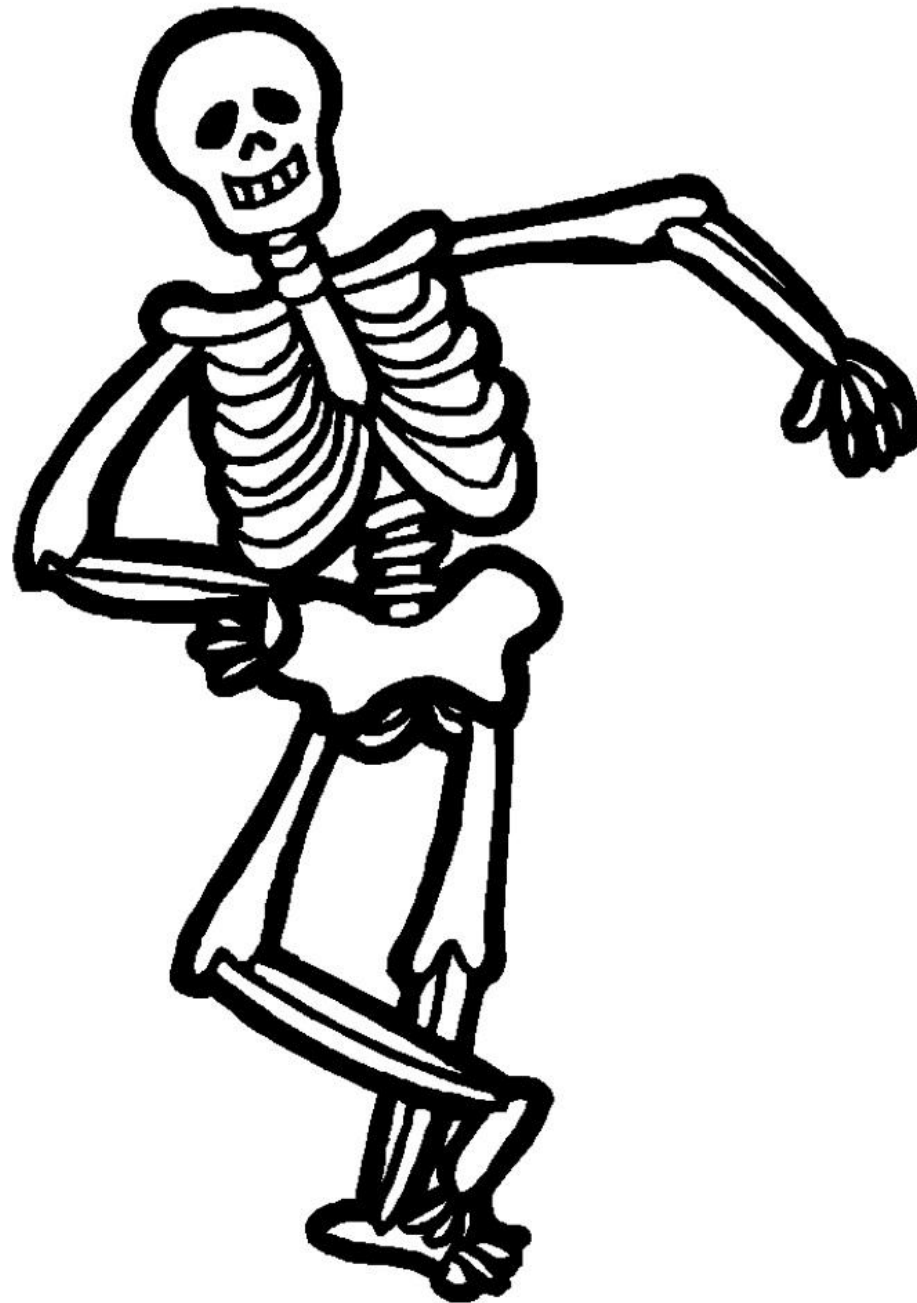
Independent work

**Theme: The Skeleton**

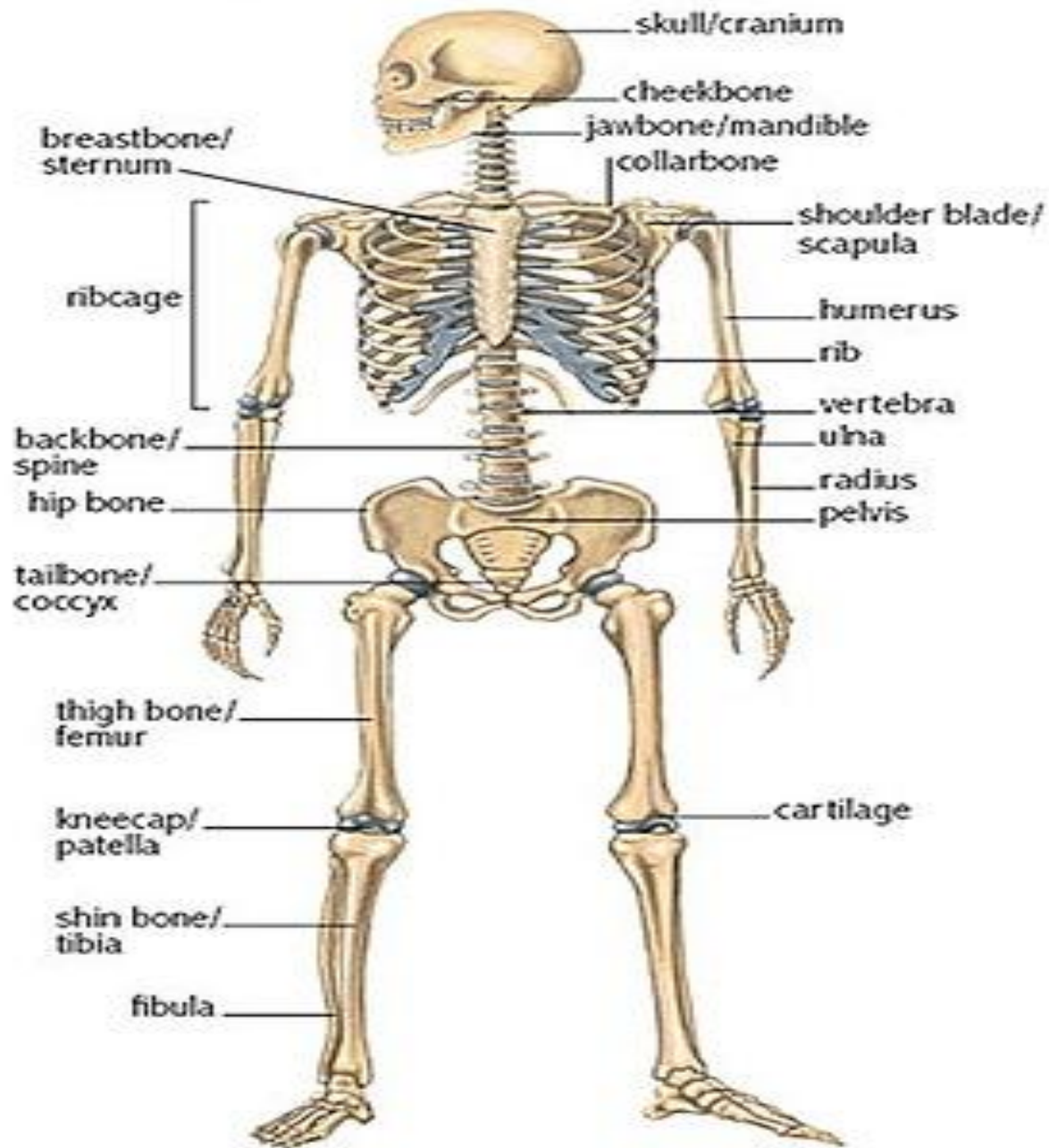
**Group:112<B> GM**

**Checked by: Kakhrimankyzy A.**

**Almaty 2014**

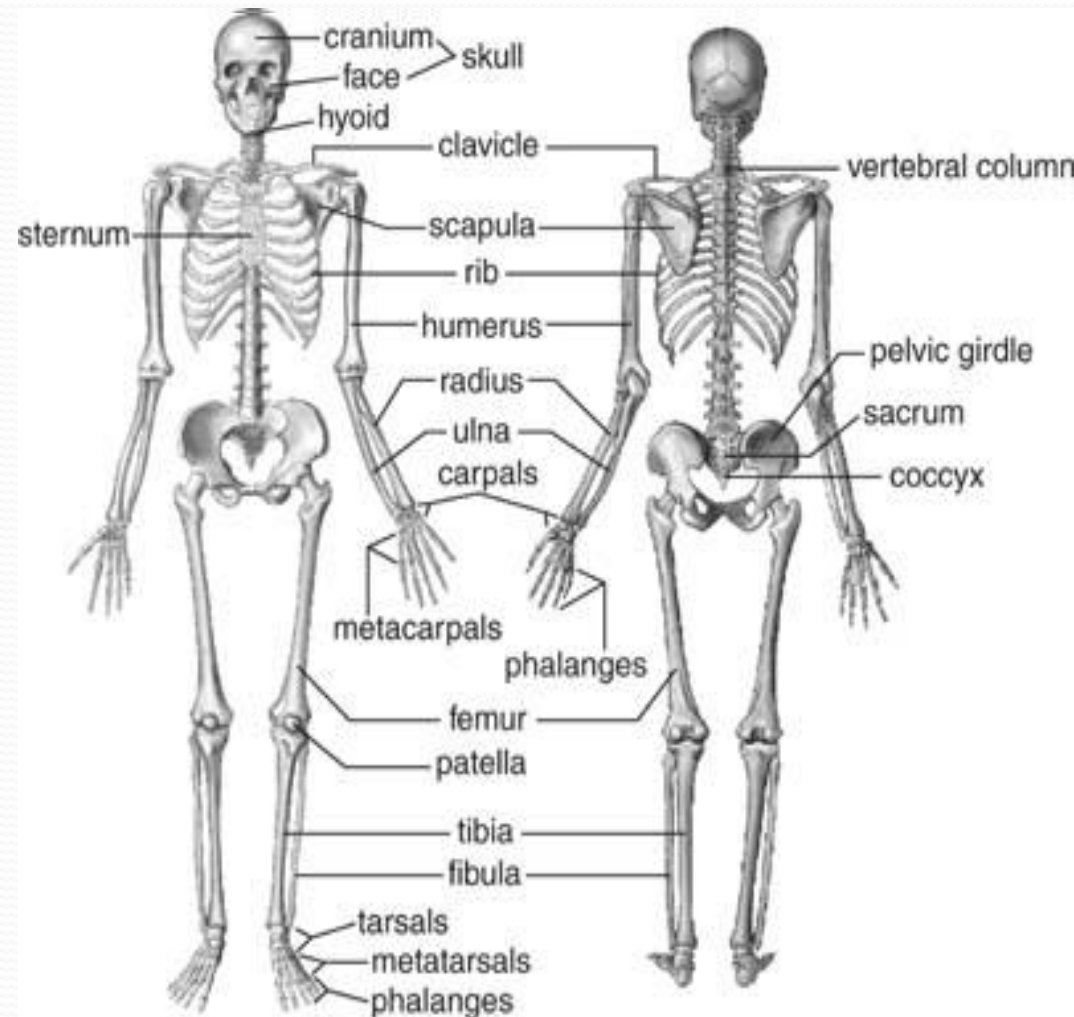


## the skeleton



# Human Skeleton

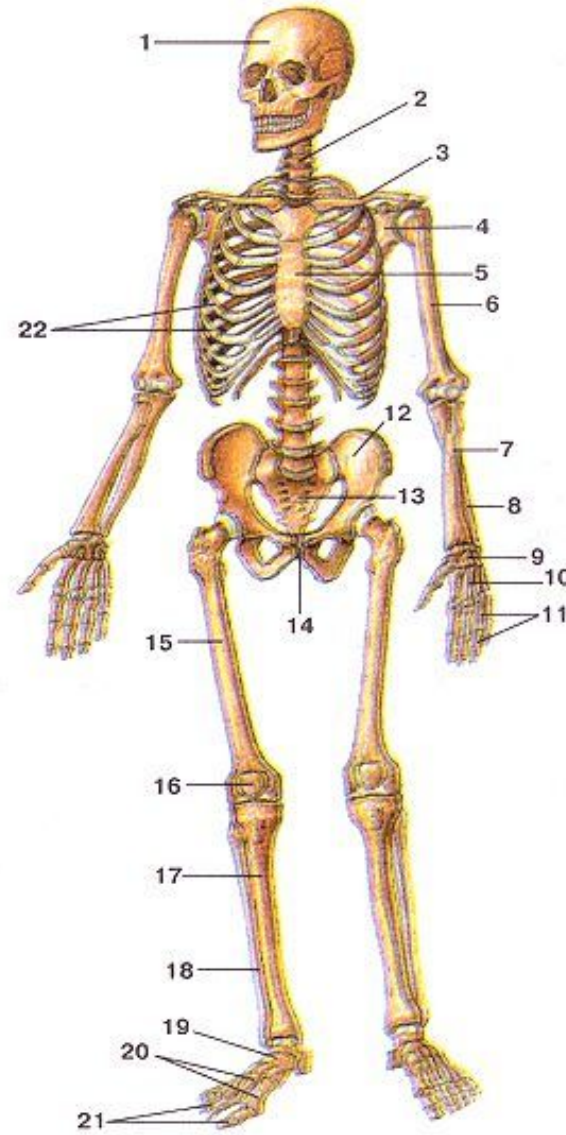
- 206 Bones
- **Axial skeleton:** (80 bones) in skull, vertebrae, ribs, sternum, hyoid bone
- **Appendicular Skeleton:** (126 bones)- upper & lower extremities plus two girdles
- Half of bones in hands & feet



# Thorax cage

- Ribs
- Thoracic vertebrae
- Sternum
- Costal cartilages
  - True ribs are directly attached to the sternum (first seven pairs)
  - Three false ribs are joined to the 7<sup>th</sup> rib.  
Two pairs of floating ribs

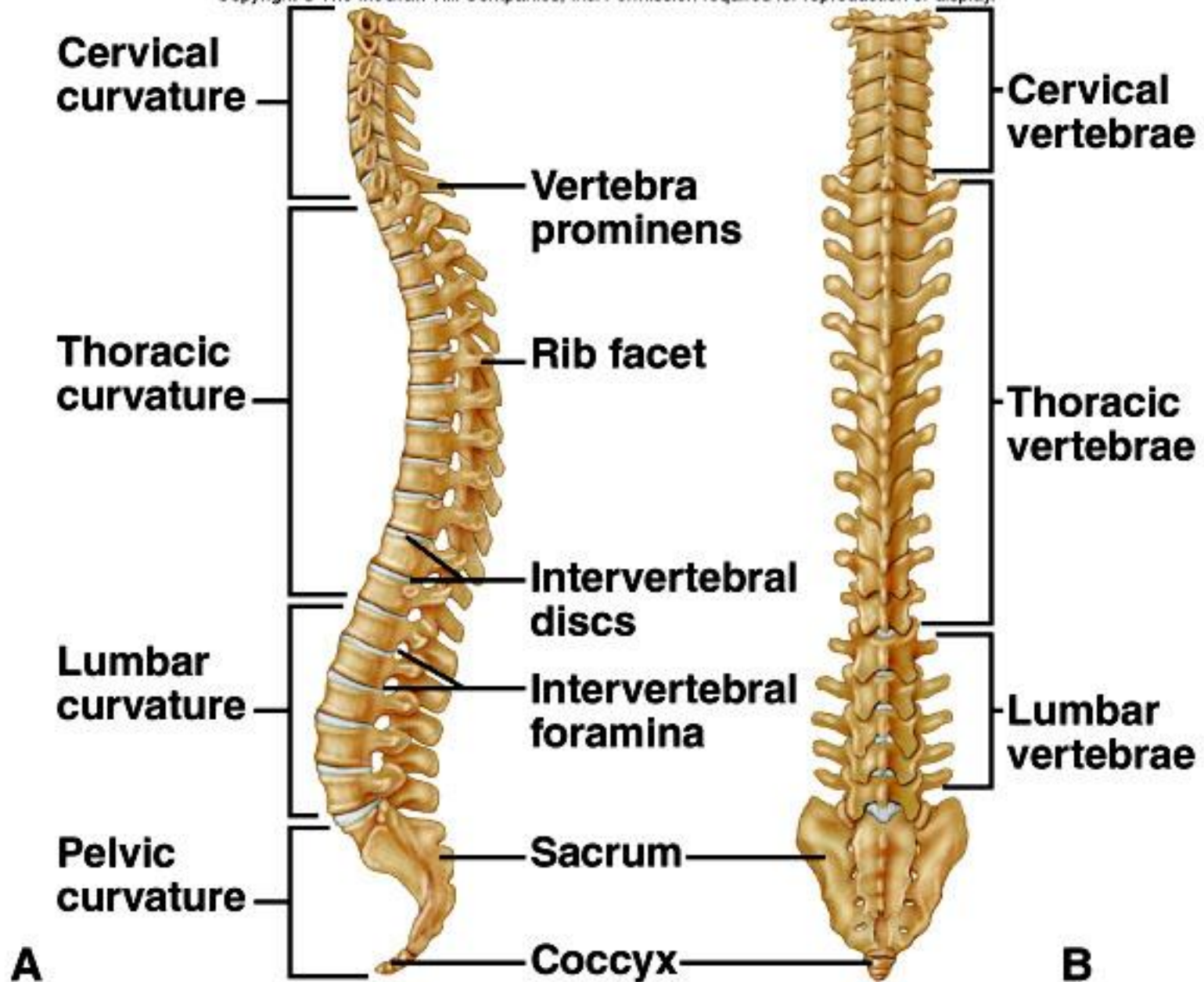
22 bones in skull  
6 in middle ears  
1 hyoid bone  
26 in vertebral column  
25 in thoracic cage  
  
4 in pectoral girdle  
60 in upper limbs  
60 in lower limbs  
2 in pelvic girdle  
  
206 bones in all



# Vertebral column

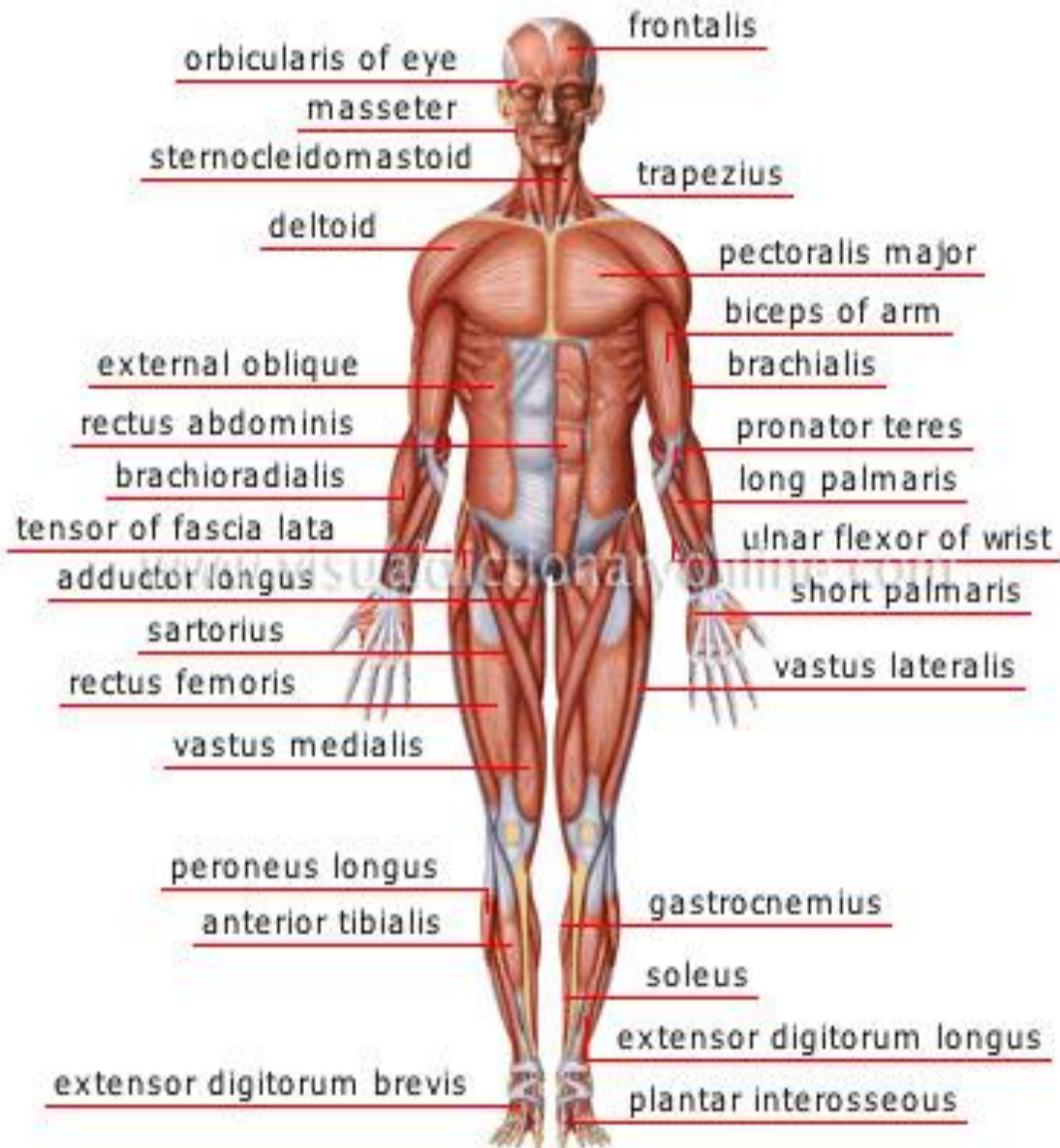
- 7 cervical vertebrae
- 12 thoracic
- 5 lumbar
- 1 sacrum (5 fused)
- 1 coccyx (4 fused)

Vertebrae vary in size and morphology











**Thanks for  
attention!**