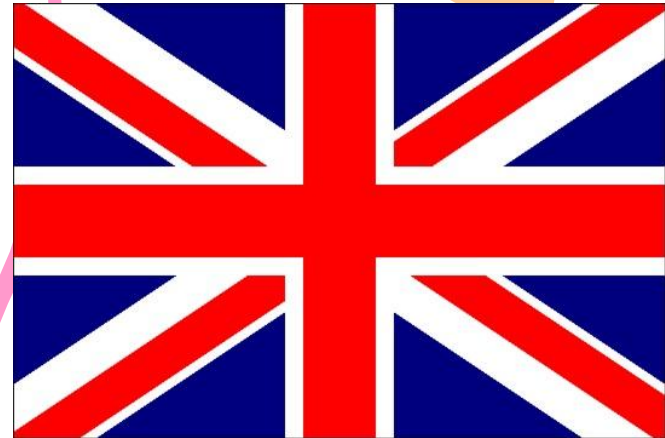
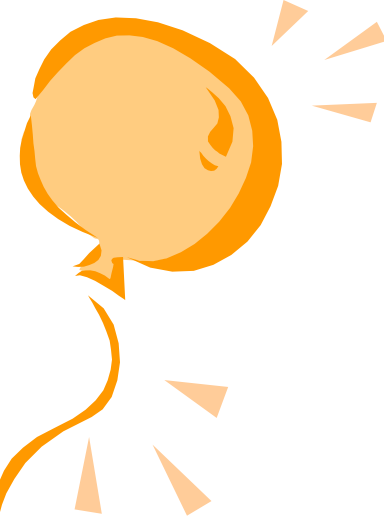


**We see, hear,  
speak, do and  
all will be OK!**



**What is the  
weather like in  
Britain?**



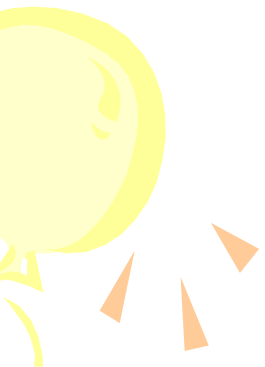
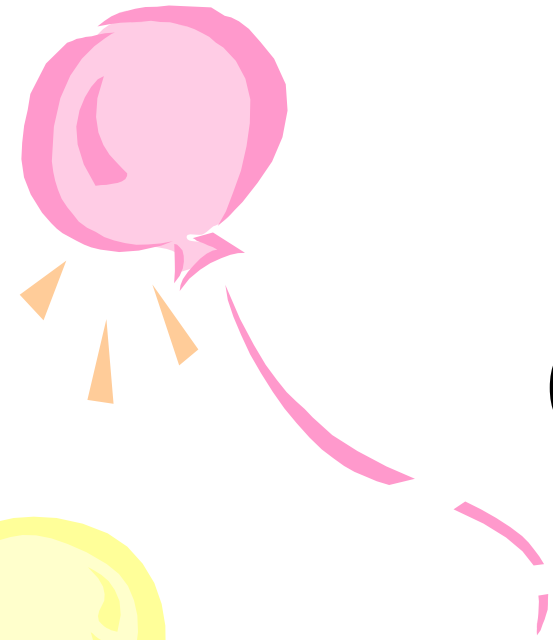


**[k]**

**cold**

**cloudy**

**cool**



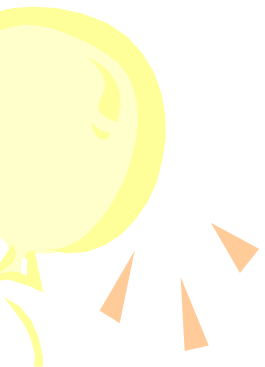
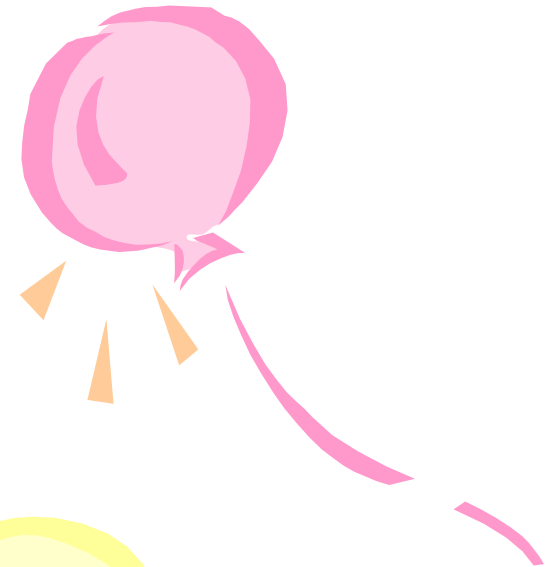


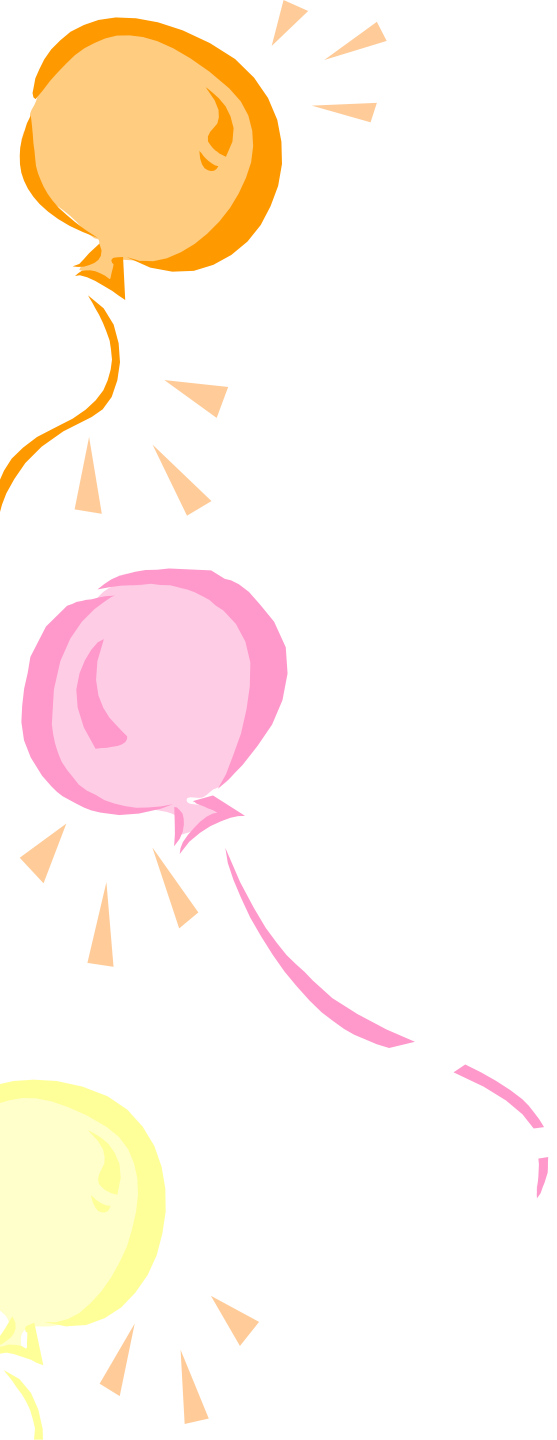
**[t]**

**frosty**

**hot**

**stormy**

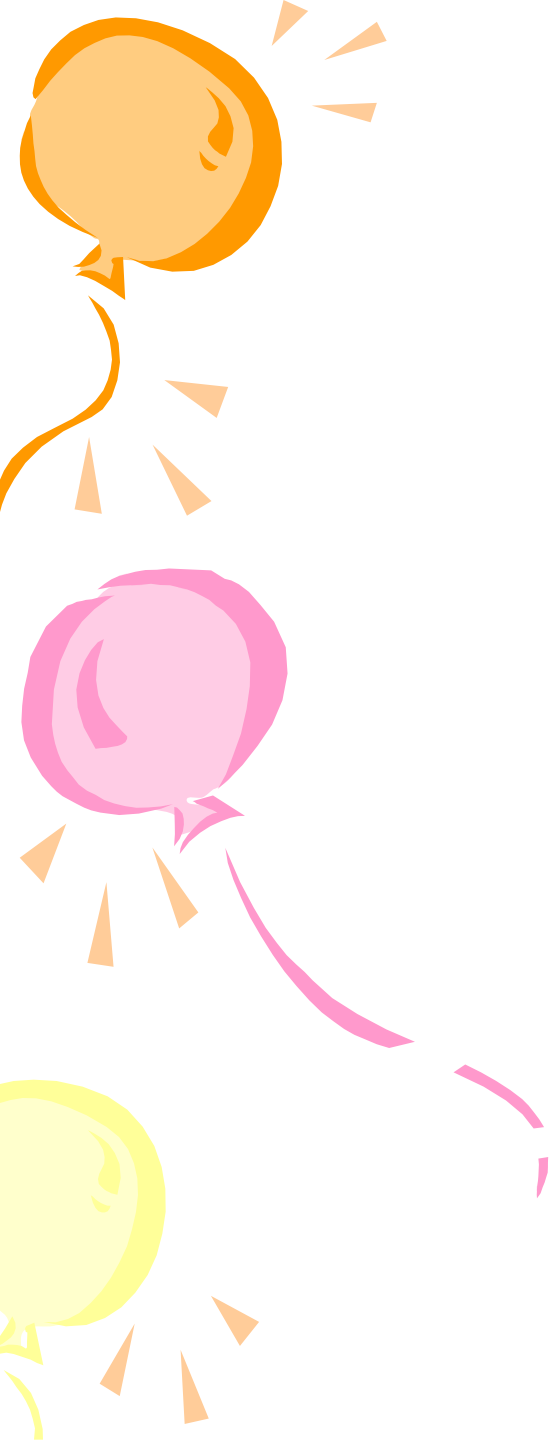




**[f]**

**frosty**

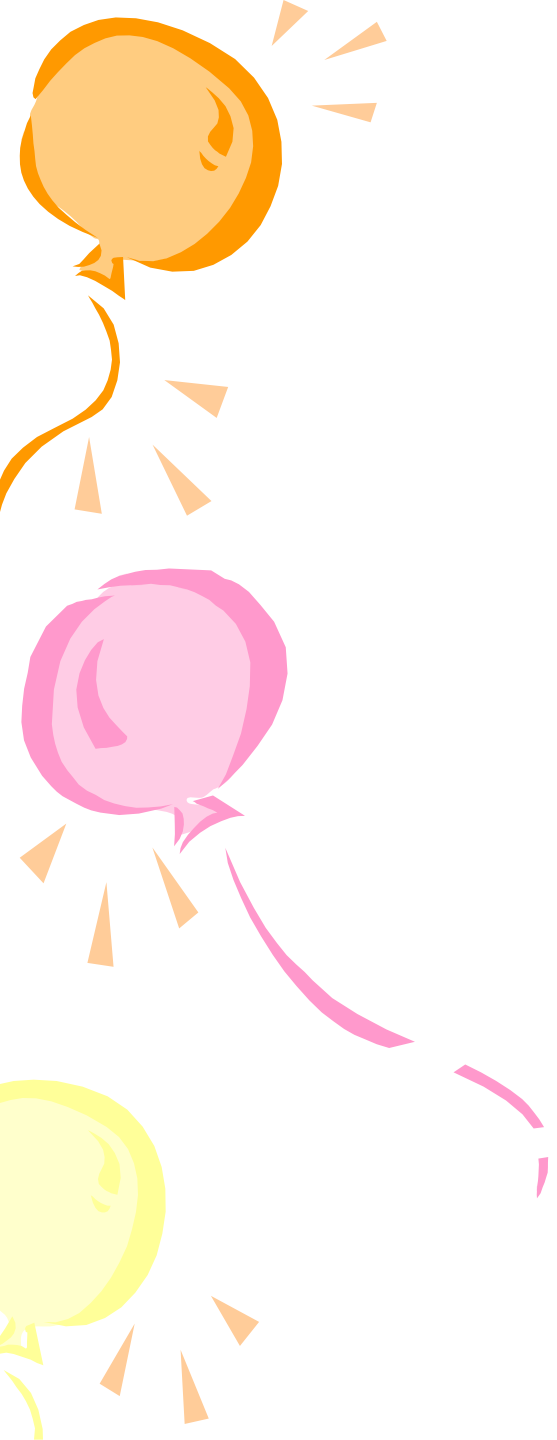
**foggy**



**[w]**

**warm**

**windy**



**[p]**

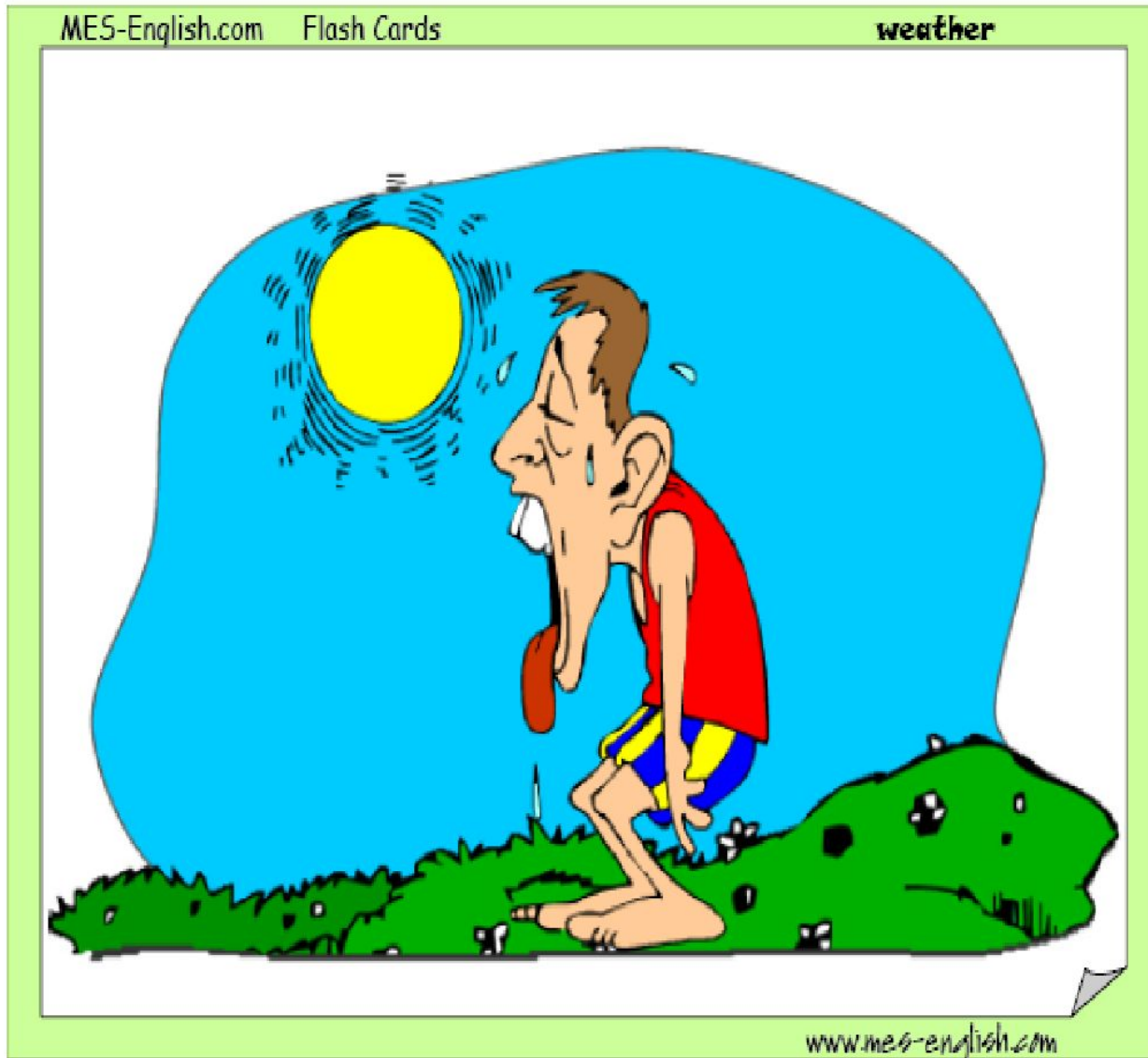
**frosty**

**foggy**

**hot**

**Hot**

**It's  
hot.**





**Cold**

**It's  
cold.**

MES-English.com Flash Cards

weather



[www.mes-english.com](http://www.mes-english.com)

**Snowy**

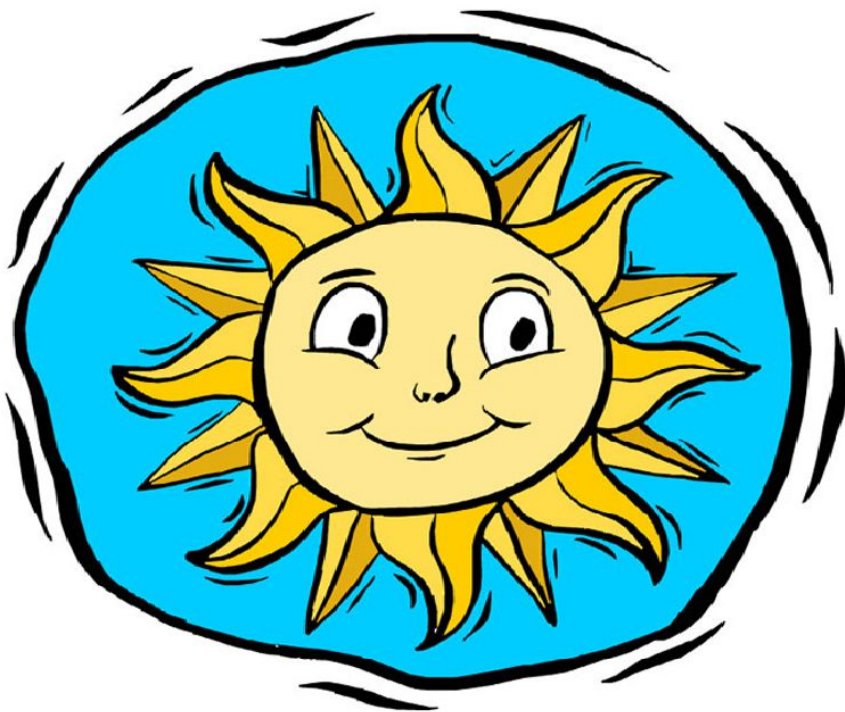
**It's**

**snowy.**



**Sunny**

**It's  
sunny.**



**Windy**

**It's windy.**



**Rainy**

**It's  
rainy.**



# Stormy

# It's stormy.



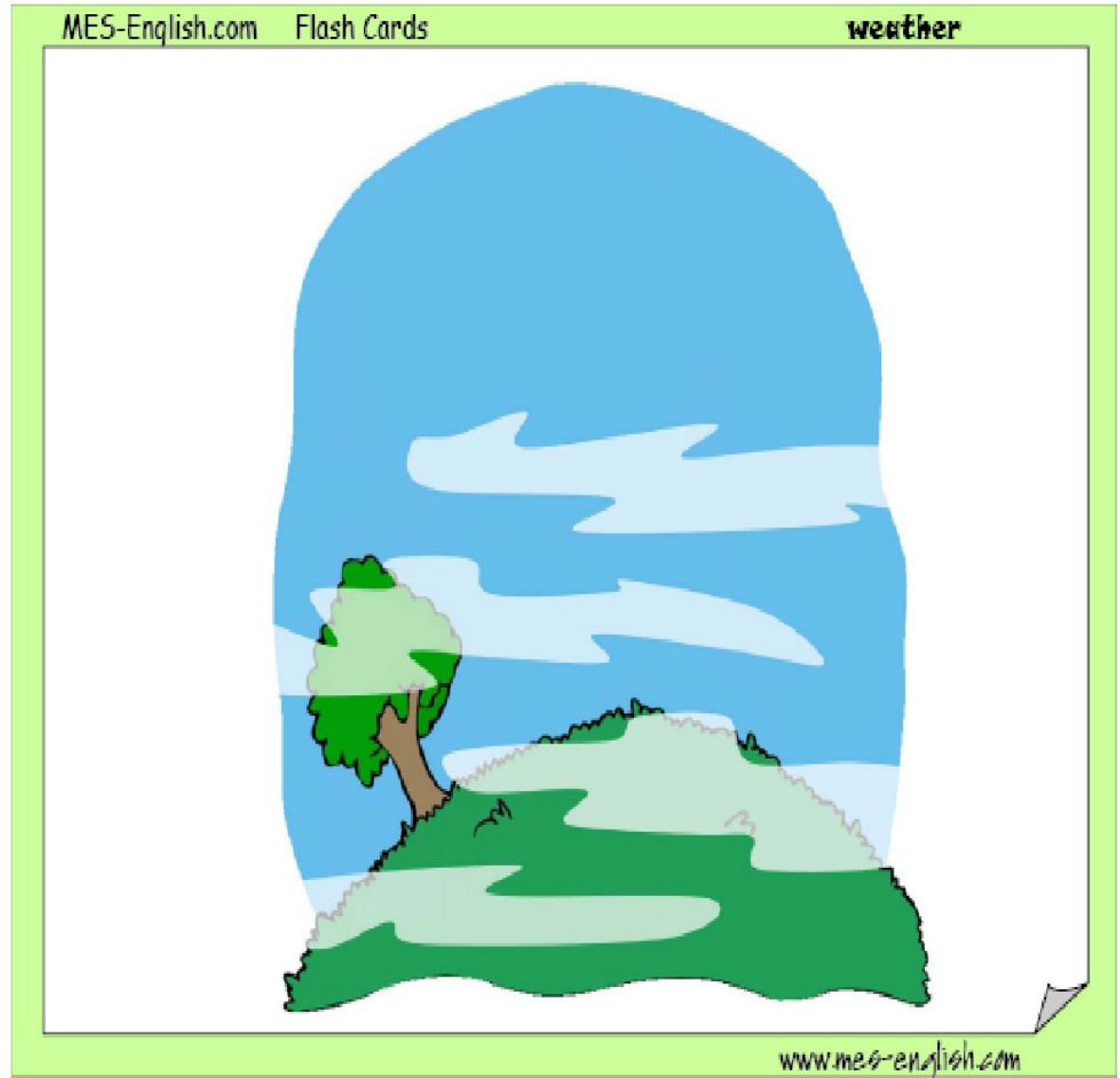
**Cloudy**

**It's  
cloudy.**



**Foggy**

**It's  
foggy.**



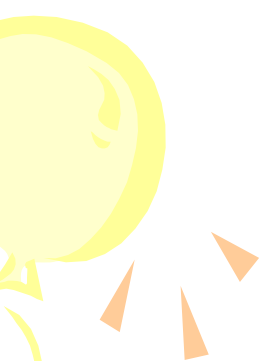




**I like summer because  
it is sunny.**





**I like... because  
it is...**





Read the text and answer  
the question

- 1: What is the weather like in winter?
  - 2: What is the weather like in spring?
  - 3: What is the weather like in summer?
  - 4: What is the weather like in autumn?
- 
- 



What is the weather like in  
your region?



● In winter it's...



● In spring it's...




● In summer it's...



● In autumn it's...



What is the winter  
like in Scotland?



What is the winter  
like in England?



# Match the weather symbols to the words



Match the weather symbols to the words:

hot

windy

cold

cloudy

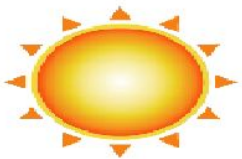
snowy

sunny

stormy

rainy

warm



1



2



3



4



5



6



7



8

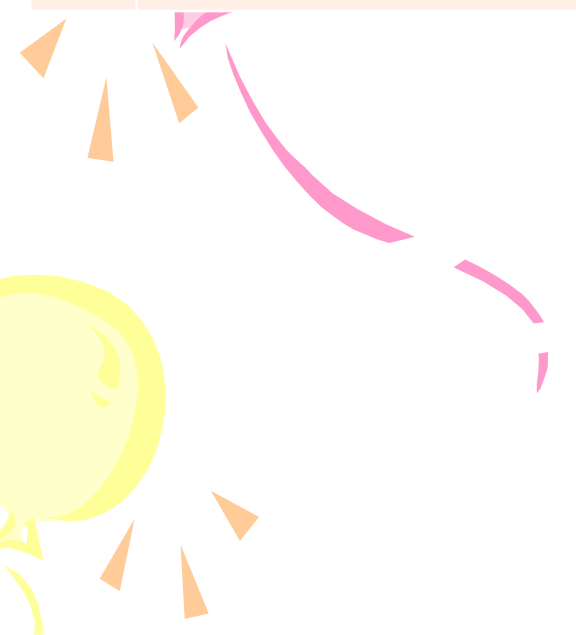


9




# Check each other

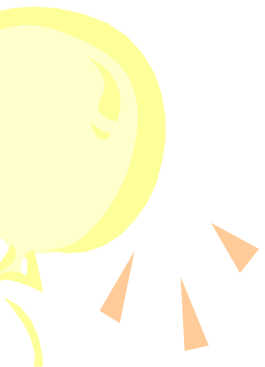
<b>1</b>	<b>Sunny</b>	<b>4</b>	<b>Hot</b>	<b>7</b>	<b>Windy</b>
<b>2</b>	<b>Rainy</b>	<b>5</b>	<b>Cold</b>	<b>8</b>	<b>Snowy</b>
<b>3</b>	<b>Cloudy</b>	<b>6</b>	<b>Warm</b>	<b>9</b>	<b>Stormy</b>





# Home task

- 
- **AB ex. 2, p.63**



Choose the drawing that reflects your  
spirits

