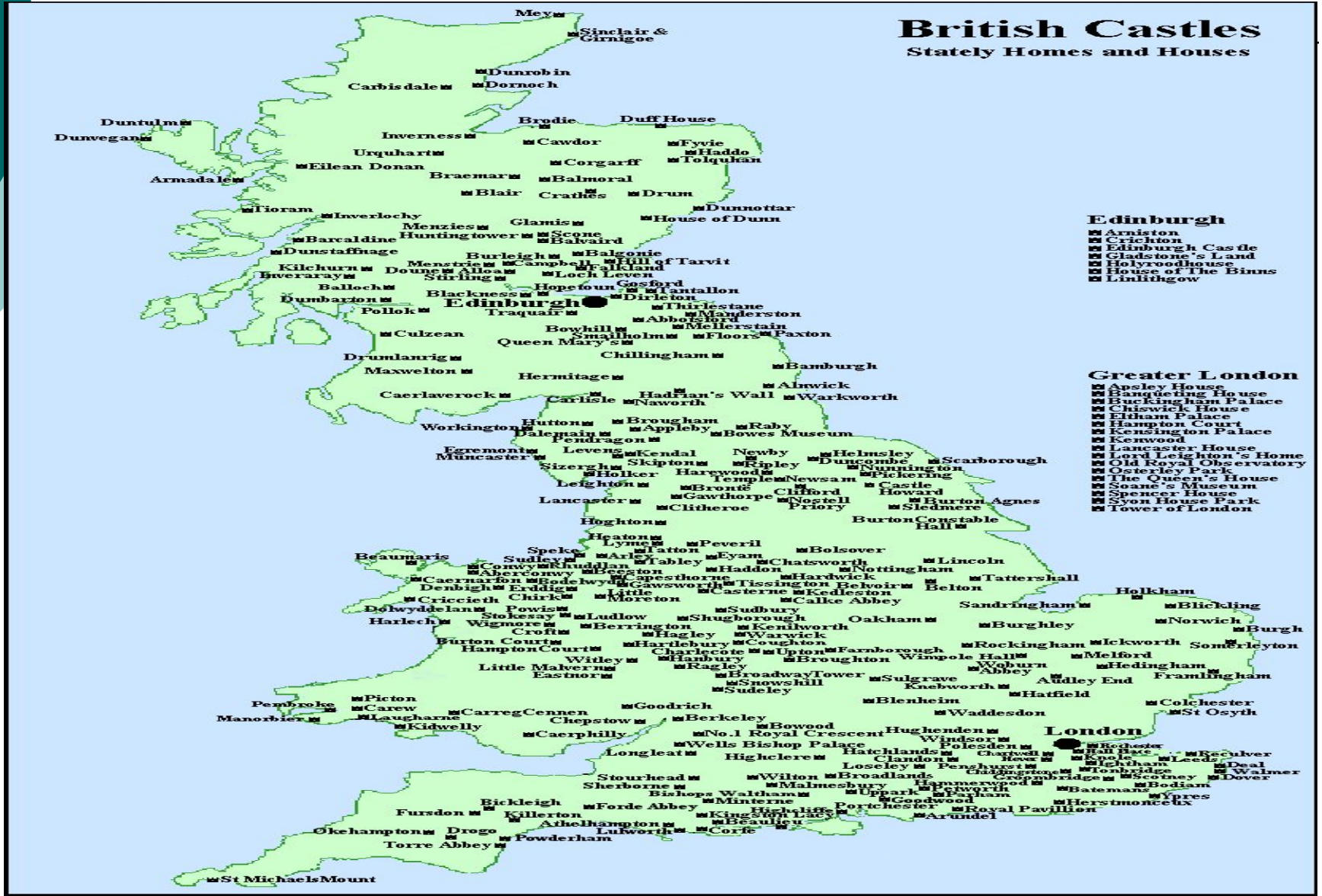


# The History and mystery of British Castles

---



# Map of castles in Great Britain





**Aim:** to find out the role of castles in English history and contemporary world.

---

**Problems:**

- -to study the history of their appearance,
- - to investigate the purpose of their building
- - to trace their further development
- - to analyse their role in contemporary world
- - to find the most interesting information about castles
- - to choose the most popular
- - to find out some legends about mysterious events which are connected with castles



# Periods when castles appeared:

---

- The Bronze Age ( 1800-600BC)
- The Iron Age and the Romans (600BC-400AD)
- The Dark Ages (400AD-1066AD)
- The Middle Ages (1066-1500)

# Purposes of castles

---

- for living
- for trading
- for defending of tribes
- as shelter from cold and animals
- a meeting place
- a symbol of Power

# Warwick castle

---



# History of Warwick castle, its construction

---



Warwick Castle is one of the most famous and daunting castles in the World. It was used as a fortification until the early 17th century, when [Sir Fulke Greville](#)

Warwick Castle is one of the most famous and daunting castles in the World. It was used as a fortification until the early 17th century, when Sir Fulke Greville

# Windsor castle

---





# Reconstruction

William III

Transformed castle in  
gothic style

---



# Reconstruction

---

George IV



**Created the present appearance of the Upper**



# Queen Elizabeth II

---



Nowadays Windsor castle is one of the official residences of Her Majesty Queen Elizabeth II. The Queen is officially in residence at a Windsor castle twice a year : in April and also in June.

# Queen Mary's dollhouse

---



# The Tower of London



# Location

---



The Tower of London is situated on Tower Hill



# Purposes of the Tower of London

---

- A palace
- A prison
- A fortification
- A zoo
- A museum

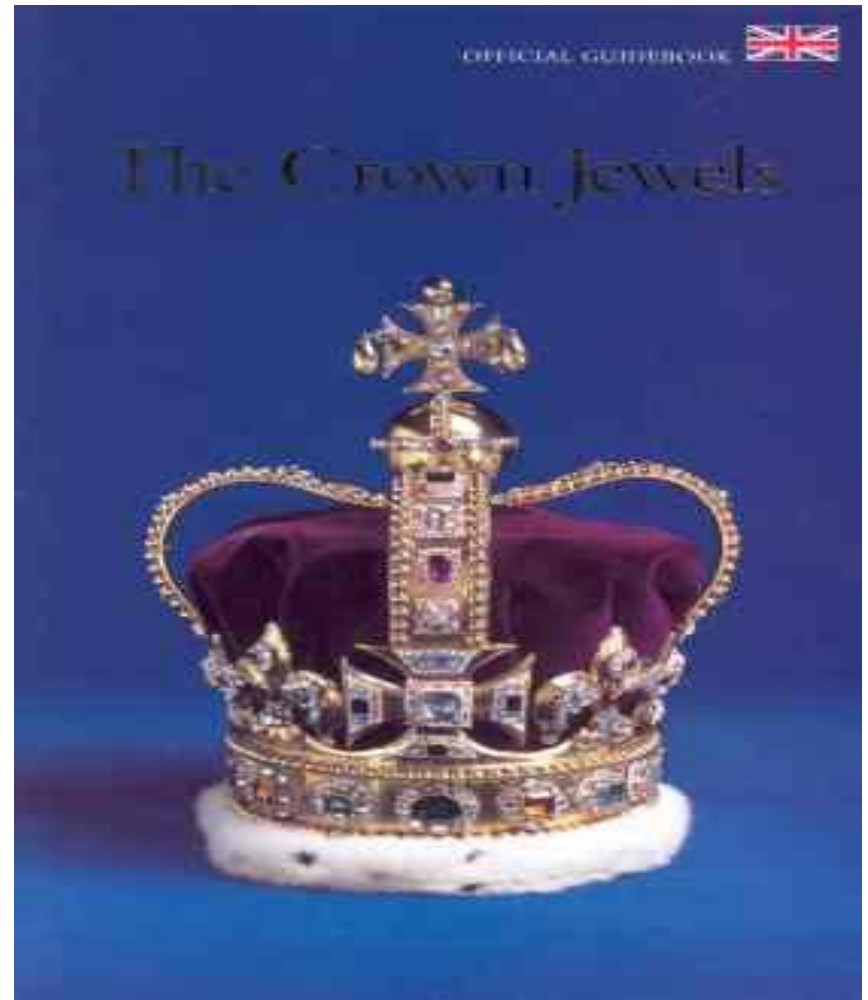
# Exhibitions

Exhibition in the White Tower

The crown Jewels exhibition



Mint of the Tower of London





# Edinburgh Castle

---



# Ghosts of Edinburgh Castle

---

The piper's ghost



The drummer's ghost



# “Greyfriars Booby”

---



Edinburgh has many associations with dogs, including the famous "Greyfriars Bobby".

# Ghosts of the Tower of London

Lady Jane Grey



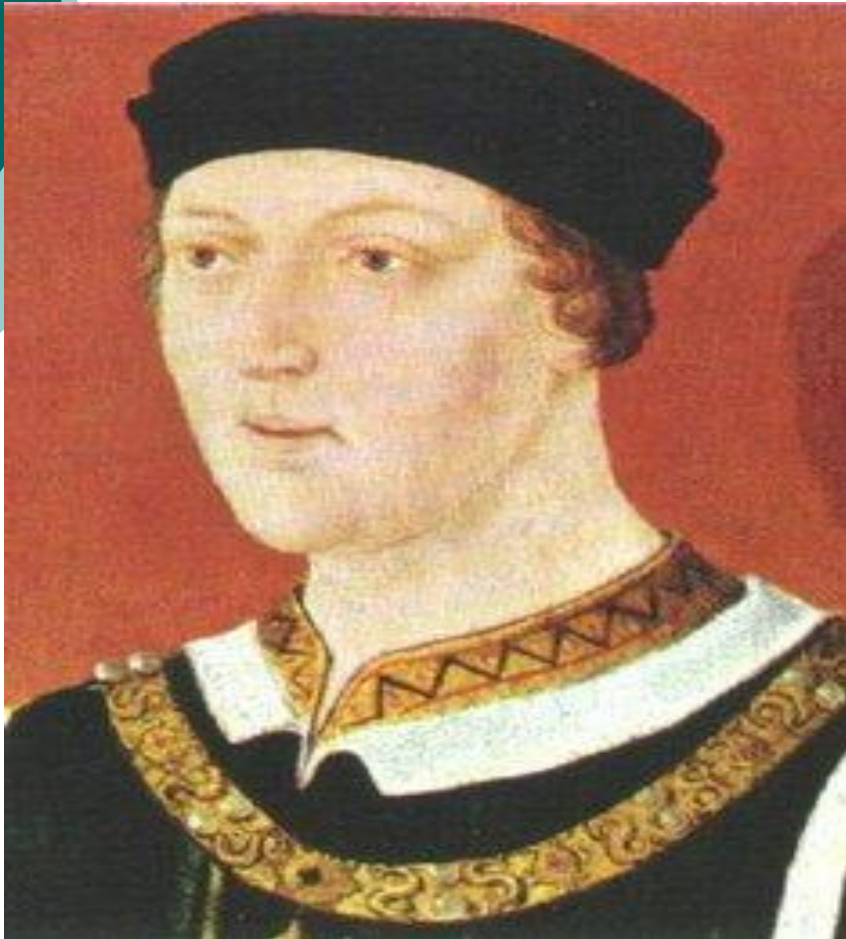
Anne Boleyn



# Ghosts of the Tower of London

HENRY VI

Walter Raleigh





## The most popular:

---

- The Tower of London 165,000
- Windsor Castle 90,500
- Warwick Castle 90,500
- Scotland Edinburgh Castle 74,000
- Wales Cardiff Castle 15,000

# Appearance:

---

- Before Christ



- Middle Ages



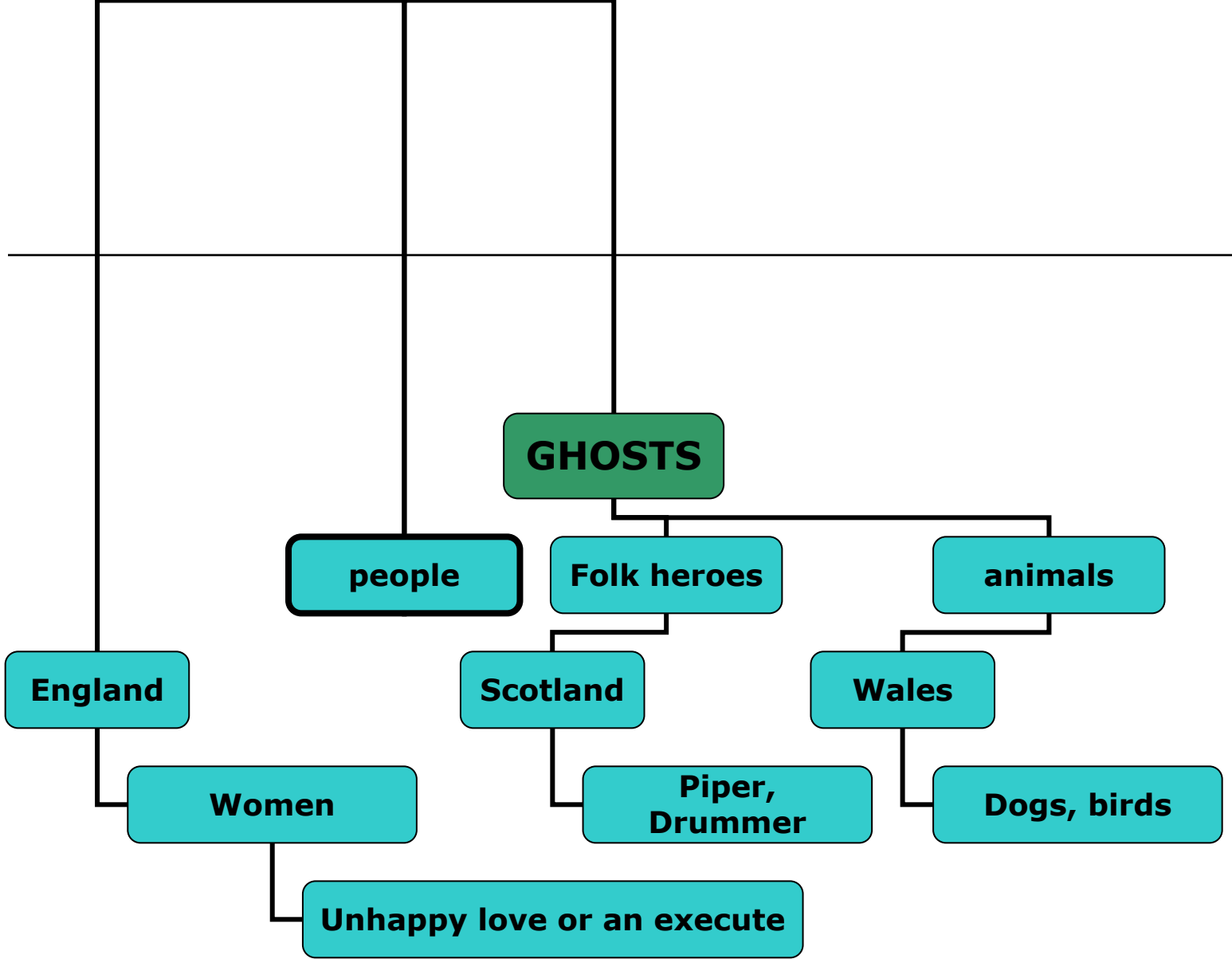


## Our survey

---

We asked some pupils what associations they had when we said “BRITAIN” and 11% of pupils named “CASTLE” as a main part of the country.





# John Mostin theory:

---



We found an answer in article of English psychologist. It was said that British people are very superstitious. They believe in ghosts and see them.



Thank you

---

For your attention