



THE MOST FAMOUS PLACES OF THE USA

Grabenko Anastasiya and Grimashevich Diana



NIAGARA FALLS

is the collective name for three waterfalls that straddle the international border between Canada and the USA ; more specifically, between the province of Ontario and the state of New York. They form the southern end of the Niagara Gorge.



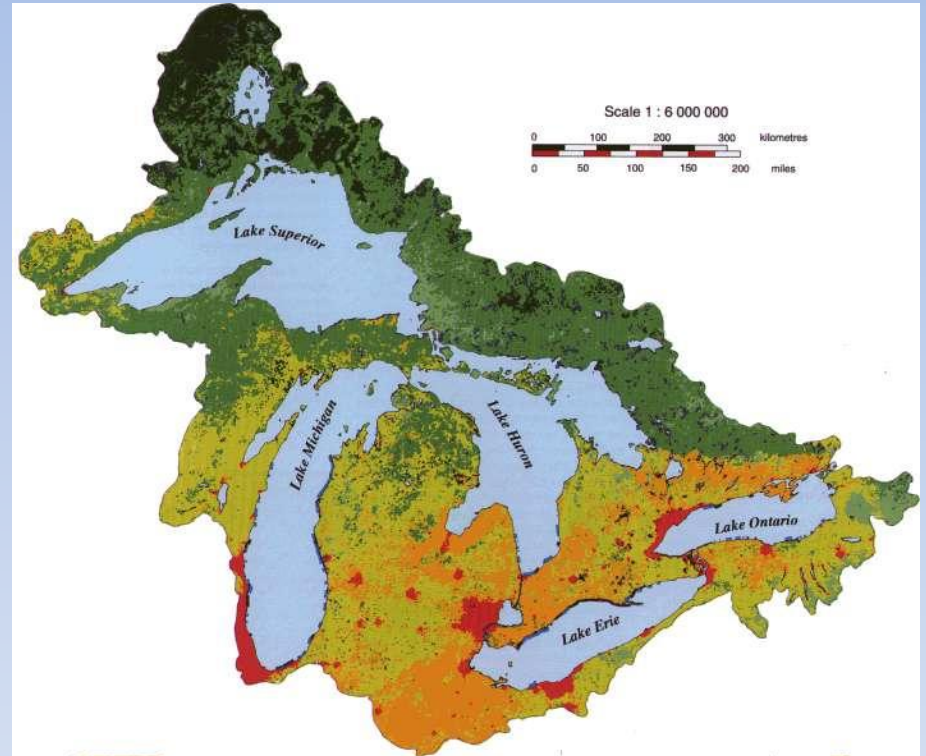
THE GRAND CANYON

is a steep-sided canyon carved by the Colorado River in the state of Arizona in the United States. The Grand Canyon is 277 miles (446 km) long, up to 18 miles (29 km) wide and attains a depth of over a mile (6,000 feet or 1,800 meters).



THE GREAT LAKES

Consist of Lakes Superior, Michigan, Huron (or Michigan–Huron), Erie, and Ontario, they form the largest group of freshwater lakes on Earth, containing 21% of the world's surface fresh water by volume.



	<u>Lake Erie</u>	<u>Lake Huron</u>	<u>Lake Michigan</u>	<u>Lake Ontario</u>	<u>Lake Superior</u>
Surface area ^[5]	9,910 sq mi (25,700 km ²)	23,000 sq mi (60,000 km ²)	22,300 sq mi (58,000 km ²)	7,340 sq mi (19,000 km ²)	31,700 sq mi (82,000 km ²)
Water volume ^[5]	116 cu mi (480 km ³)	850 cu mi (3,500 km ³)	1,180 cu mi (4,900 km ³)	393 cu mi (1,640 km ³)	2,900 cu mi (12,000 km ³)
Elevation ^[11]	571 ft (174 m)	577 ft (176 m)	577 ft (176 m)	246 ft (75 m)	600.0 ft (182.9 m)
Average depth ^[10]	62 ft (19 m)	195 ft (59 m)	279 ft (85 m)	283 ft (86 m)	483 ft (147 m)
Maximum depth ^[12]	210 ft (64 m)	748 ft (228 m)	925 ft (282 m)	804 ft (245 m)	1,335 ft (407 m)



DEATH VALLEY

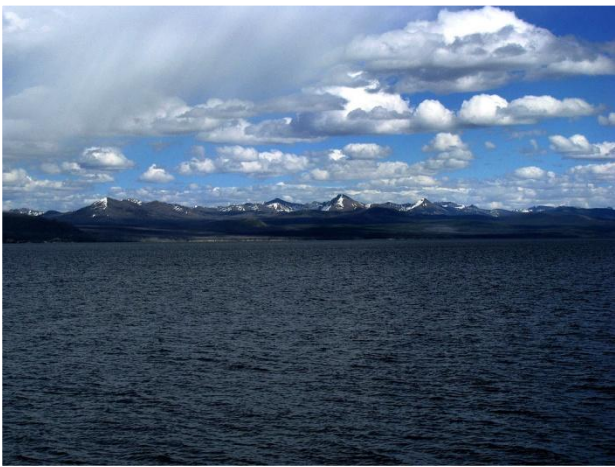
is a desert valley located in Eastern California's Mojave Desert, the lowest, driest, and hottest area in North America.



YELLOWSTONE NATIONAL PARK

is a national park located primarily in the U.S. state of Wyoming, although it also extends into Montana and Idaho.





Yellowstone Lake



Old Faithful Geyser erupts approximately every 91 minutes.



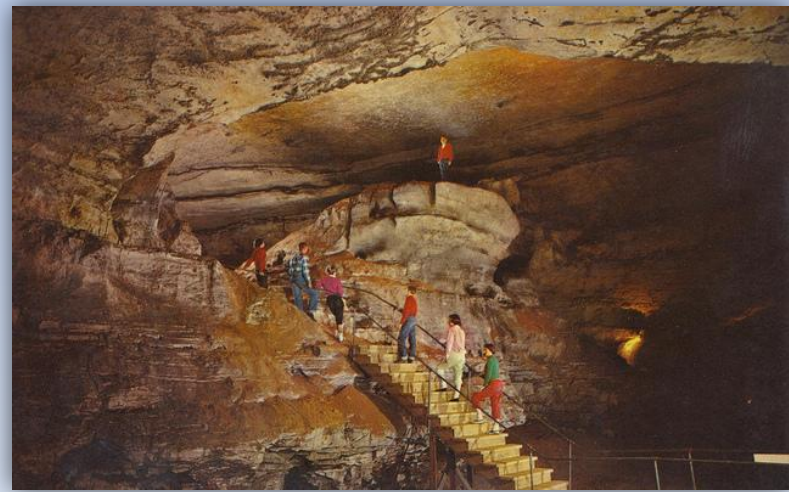
Grand Canyon of Yellowstone



Yellowstone sand verbena are endemic to the Yellowstone's lakeshores.

MAMMOTH CAVE NATIONAL PARK

is a U.S. National Park in central Kentucky, encompassing portions of Mammoth Cave, the longest cave system known in the world.



DISNEYLAND, ANAHEIM, CA

*To all who come to this happy place:
Welcome. Disneyland is your land.
Here age relives fond
memories of the past, and here
youth may savor the challenge
and promise of the future. Disneyland
is dedicated to the ideals, the dreams,
and the hard facts that have created
America, with the hope that it will be a source of joy and inspiration
to all the world, - Walter E. Disney July 17 1955*



**THANK YOU FOR
YOUR ATTENTION**



**NOW CLAP
YOUR HANDS!!**