

THE POLICE OF GREAT BRITAIN

The presentation was
made by the student
group 9101

Akhvetzyanov Nail

The police of Great Britain is a law enforcement agency, established in 1829. In the United Kingdom there is no single centralized system of police as in Russia. There are 52 police formations: 43 in England and Wales, 8 in Scotland and one in Northern Ireland. All of them are subordinated to the Ministry of internal Affairs of great Britain.

The police of London was established by order of the Minister of internal Affairs of Robert Peel. At the time of its appearance, the police of London consisted of 895 constables, 88 sergeants, 20 inspectors and eight superintendents.

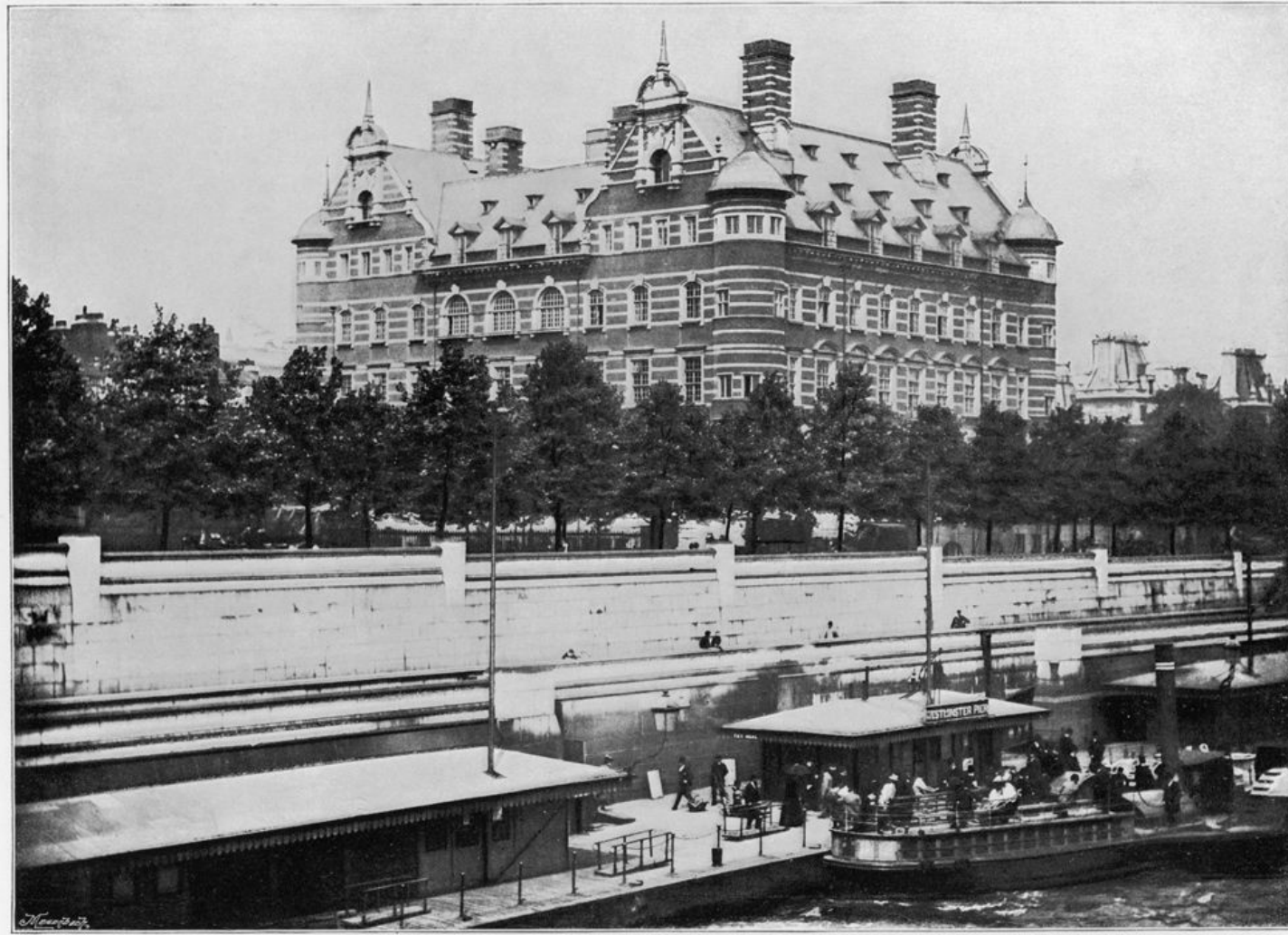


29 September 1829 the first constables of the Metropolitan police began to carry the patrol and sentry service in the city. The police were clad in dark blue jackets and pants, and black hats. Special clothing was to distinguish them from the soldiers. Their only weapon was a short club and the London police had a special rattle to call for help.



Scotland Yard — the headquarters of the police of greater London, excluding the city of London, which has its own police. The name is often used in the media to refer to the London police. Largest police Agency in England. It has 31 thousand officers, who are responsible for a population of 7.2 million people in London and the surrounding area.

The first building of London police



FROM WESTMINSTER BRIDGE.

[From a Photo. by York & Son, Notting Hill.]

The current building of the police of greater London



Today, the Service of the Metropolitan police includes many divisions. Territorial police are 32 squads for the protection of areas of London and a detachment for the protection of Heathrow airport. The territorial police are traffic police, mounted police, the canine, the marine support unit.



London police in 1850 and now



Thanks for watching!