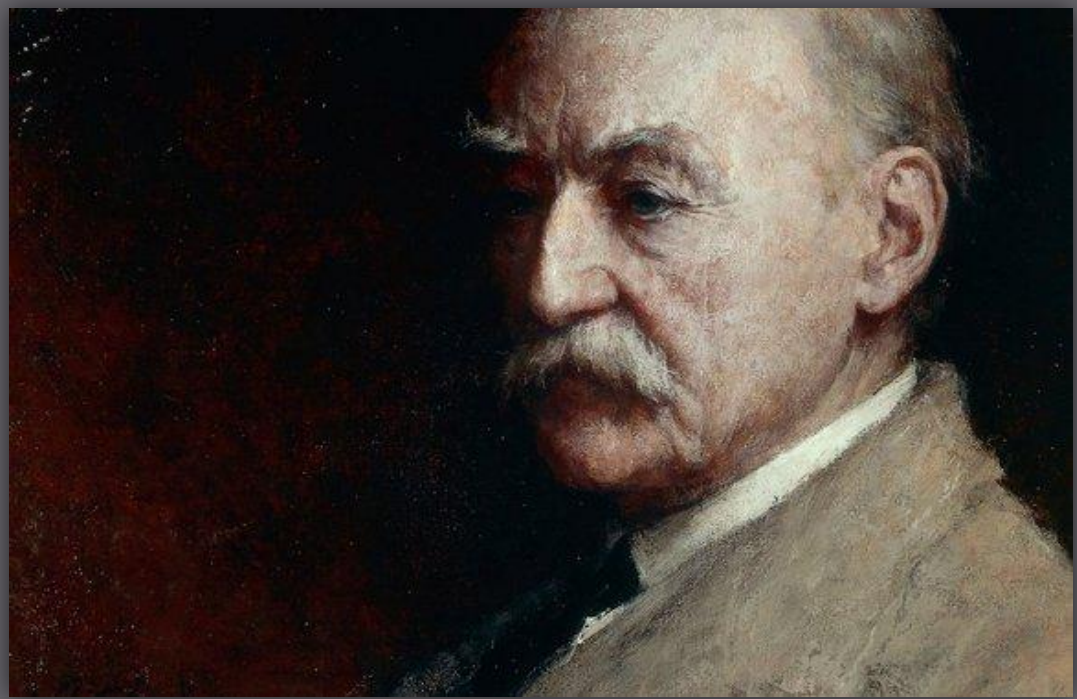


“A strong woman who recklessly throws away her strength, she is worse than a weak woman who has never had any strength to throw away.”

- Thomas Hardy,  
*Tess of the D'Urbervilles*

Thomas Hardy  
(1840-1928)

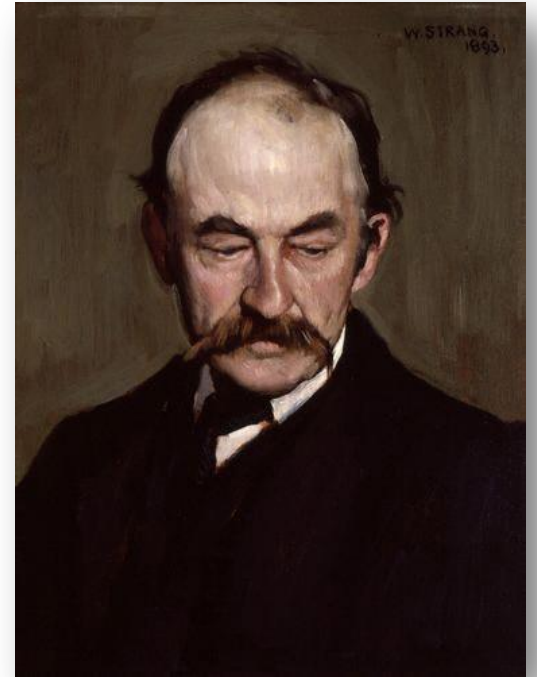


«grieving and courageous painter»

A novel *Tess of the D'Urbervilles*

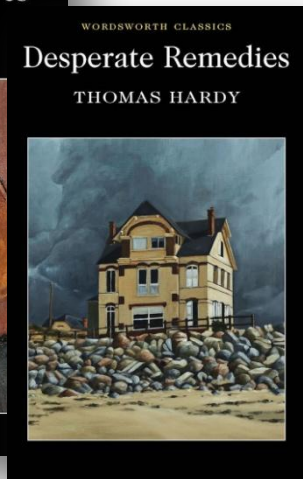
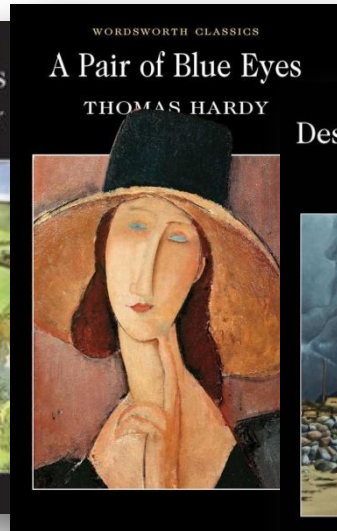
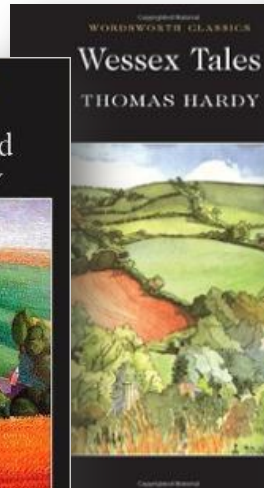
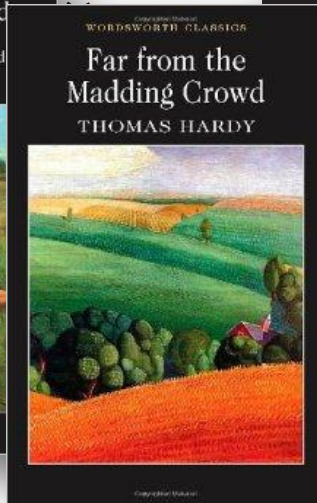
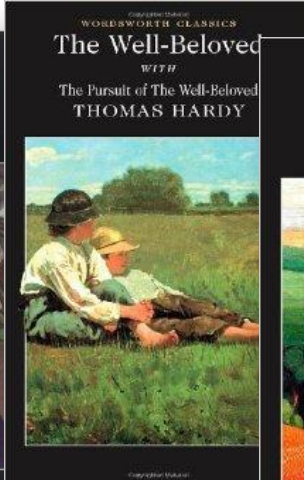
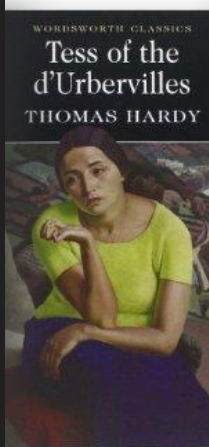
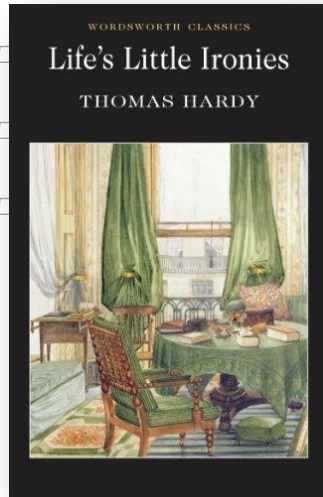
# Biography

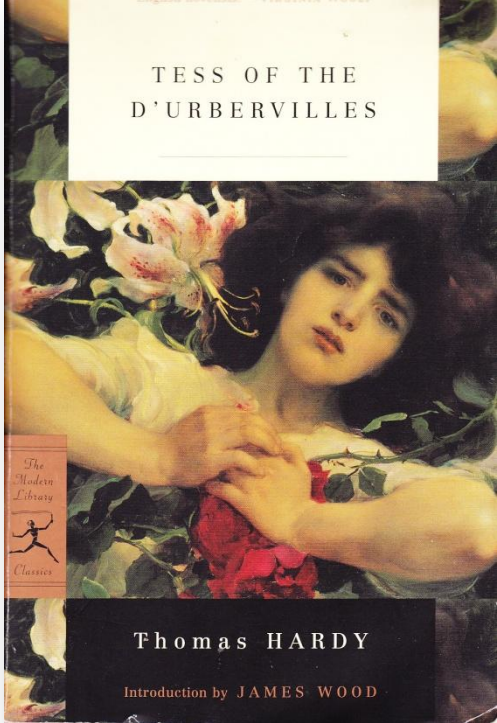
---



# Major novels

- *Under the Greenwood Tree* (1872)
- *A Pair of Blue Eyes* (1873)
- *Far from the Madding Crowd* (1874)
- *The Return of the Native* (1878)





TESS OF THE  
D'URBERVILLES

The  
Modern  
Library  
Classes

Thomas HARDY

Introduction by JAMES WOOD