

W e l c o m e t o

The word "Welcome to" is written in a playful, rounded font. Each letter is a different color and has a unique cartoon character integrated with it. The 'W' is green with a small green character on top. The 'e' is red with a blue character on its left side. The 'l' is yellow with a white character on its right side. The 'c' is green with a white character on its top curve. The 'o' is blue with a blue character on its right side. The 'm' is brown with a yellow character on its top curve. The 'e' is yellow with a blue character on its left side. The 't' is green with a brown character on its top curve. The 'o' is blue with a blue character on its right side.

L e t t e n d

The word "Letten d" is written in a playful, rounded font. Each letter is a different color and has a unique cartoon character integrated with it. The 'L' is red with a white character on its left side. The 'e' is yellow with a blue character on its left side. The 't' is green with a brown character on its top curve. The 't' is green with a brown character on its top curve. The 'e' is red with a blue character on its left side. The 'n' is green with a yellow character on its top curve. The 'd' is red with a white character on its left side. The 'd' is red with a yellow character on its right side.







# What can you do?

I can



one



two



three





four

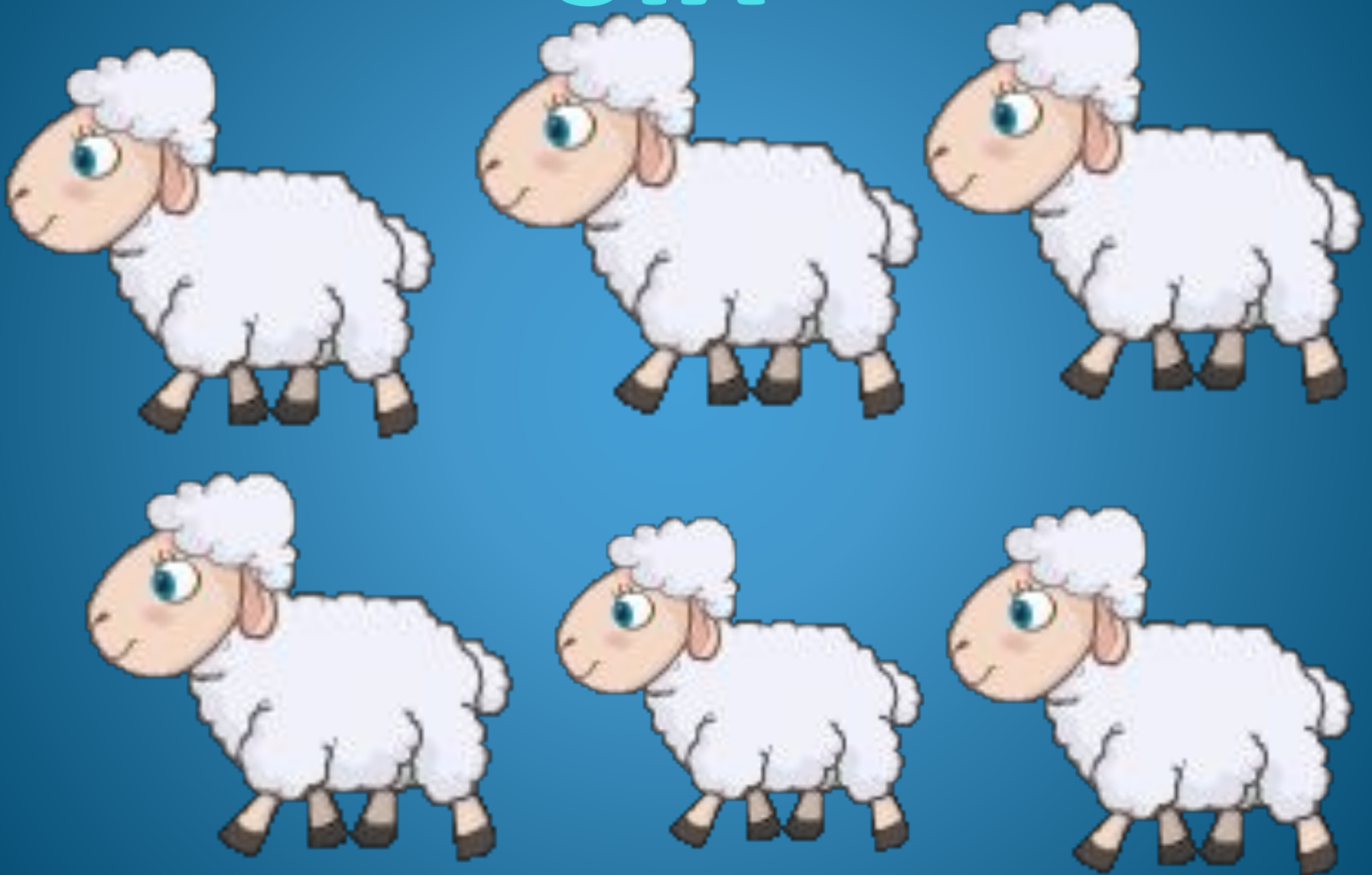




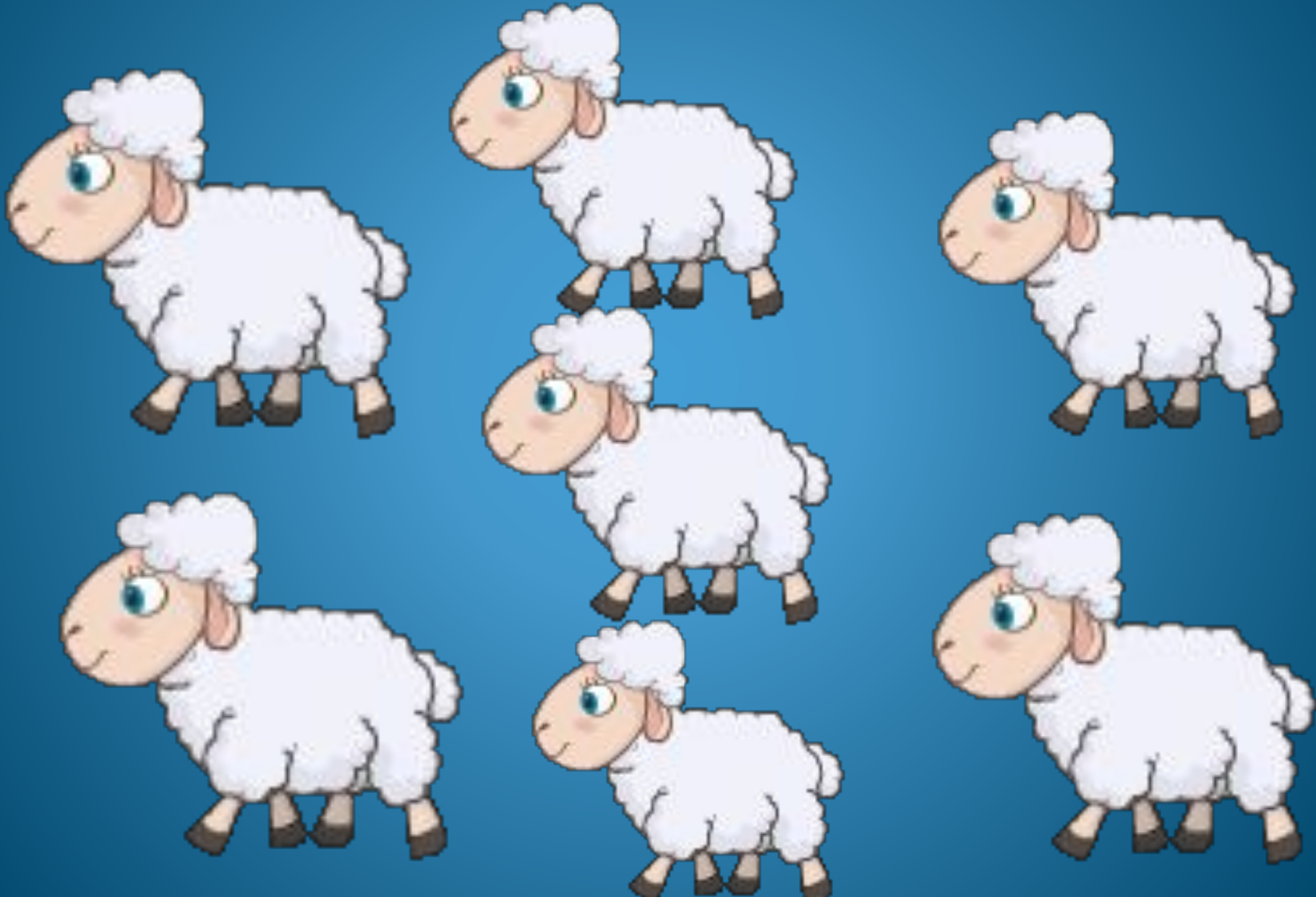
five



six

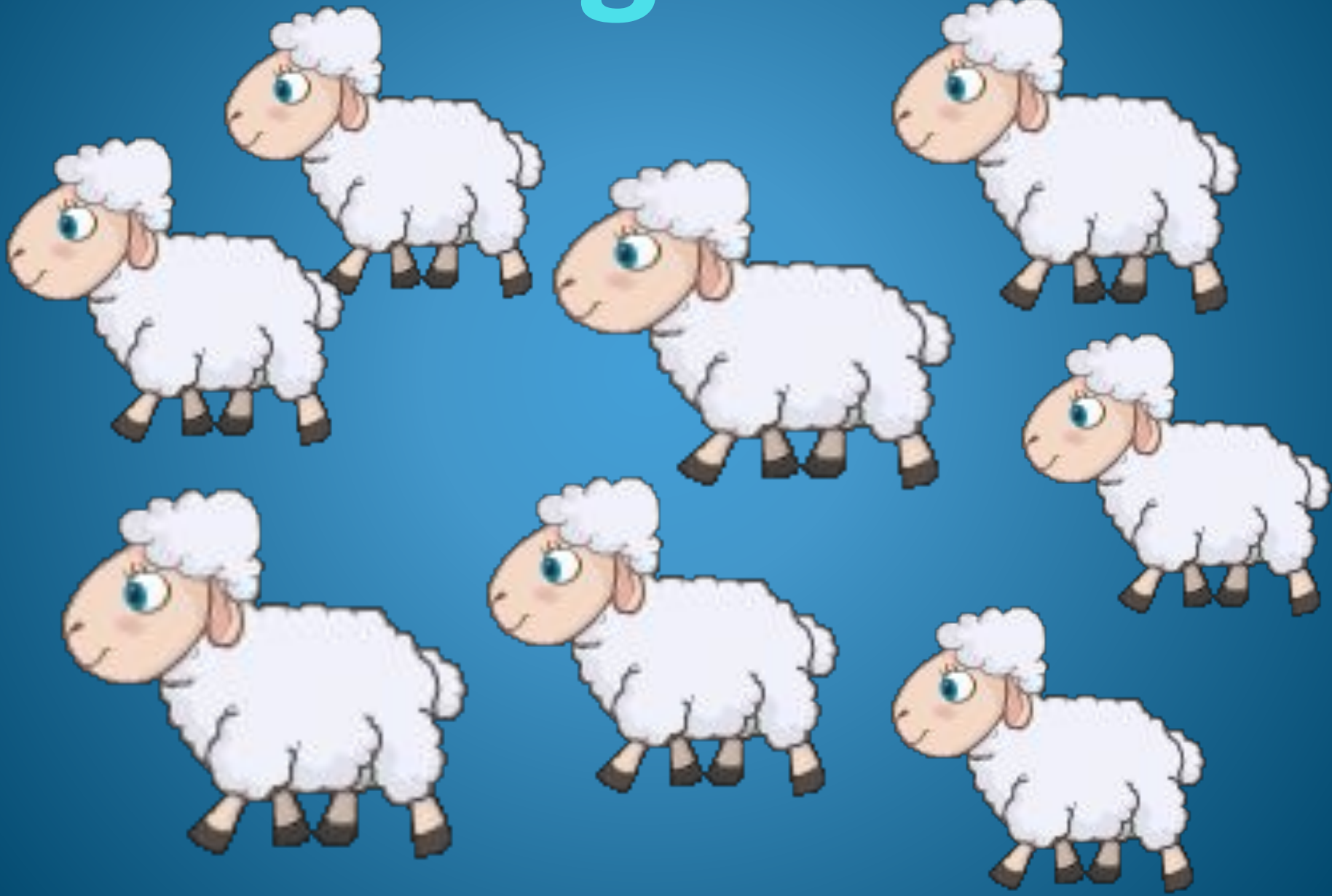


seven





# eight



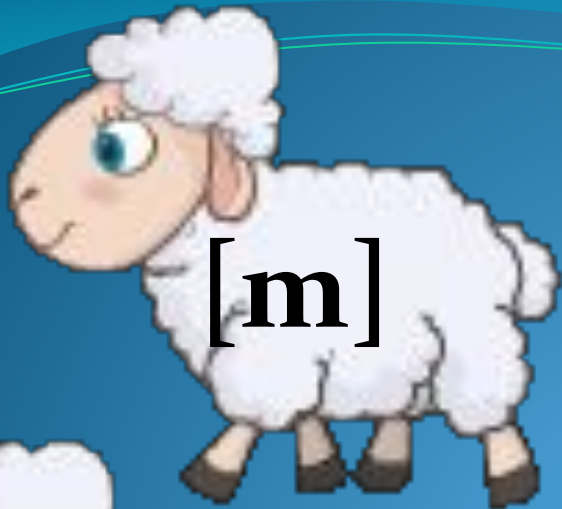


nine



ten







# Bear





# Cat



**Dog**





# Elephant



# Fox





# Goose



Frog



**Pig**





Horse





# Kangaroo



# Mouse









