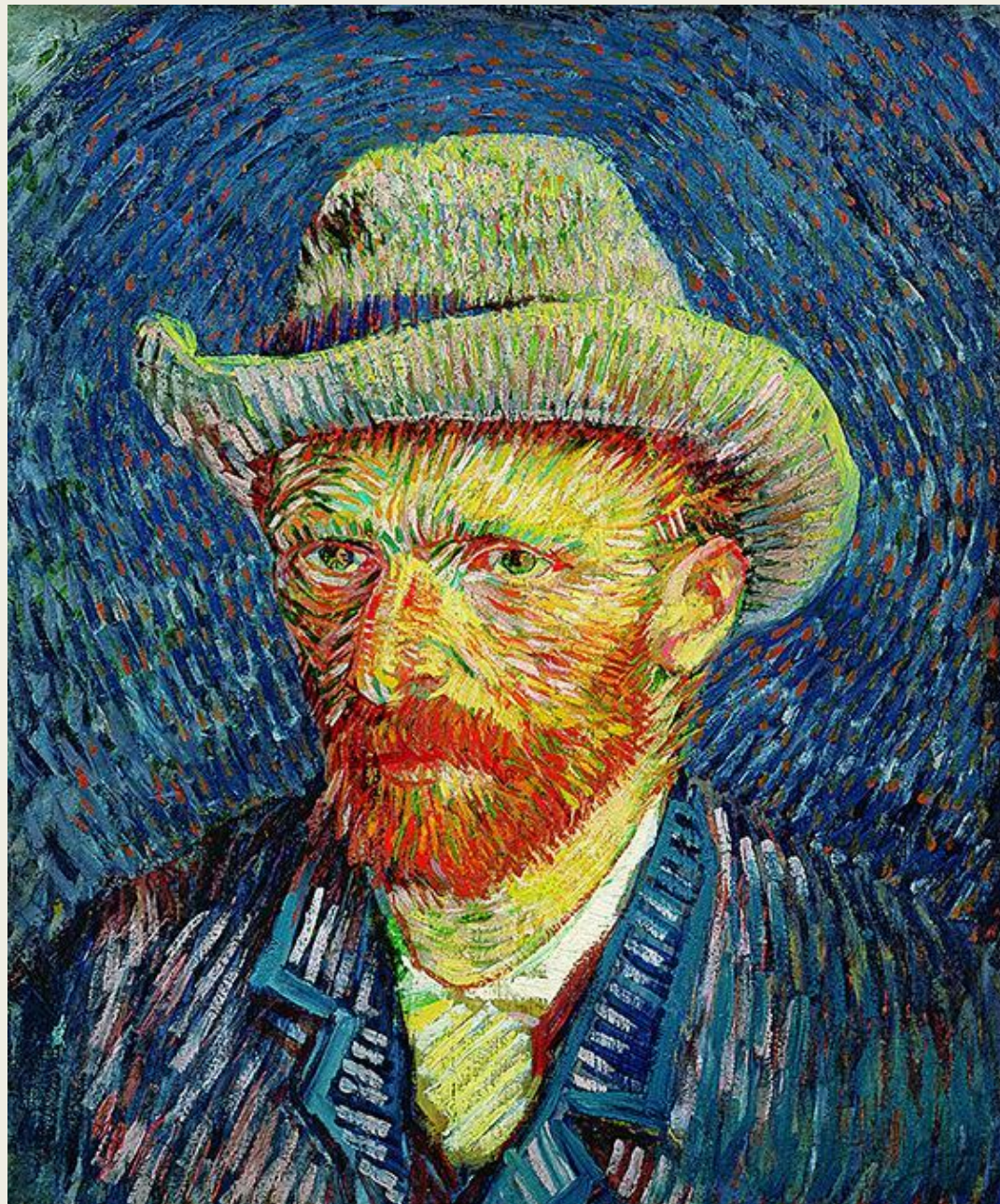


Sardiyarov
a Victoriya
312 group



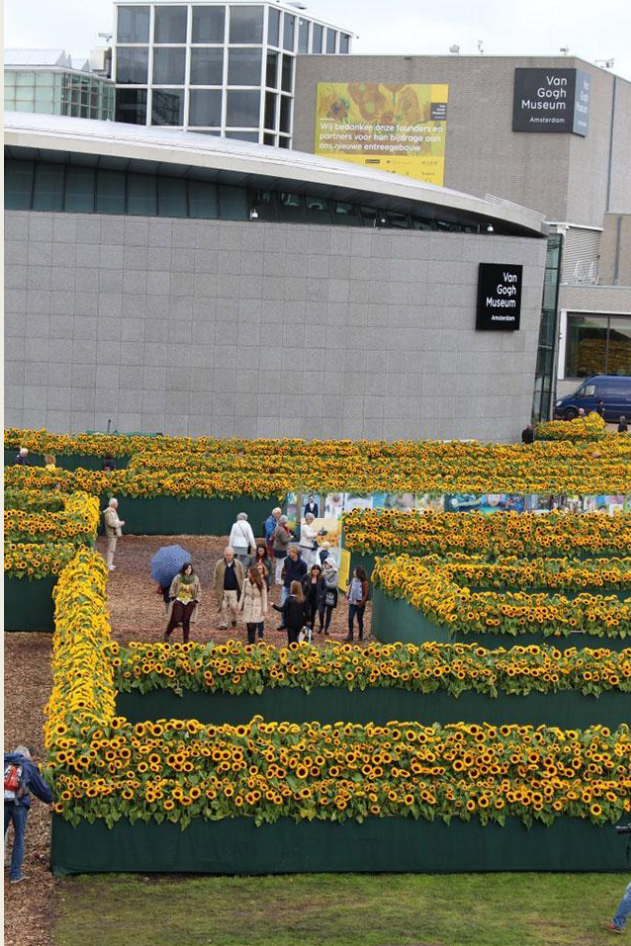
Van
Gogh
Museum
Amsterdam

The Van Gogh Museum is an art museum dedicated to the works of Vincent van Gogh and his contemporaries. The museum's collection is the largest collection of Van Gogh's paintings and drawings in the world.

The museum opened on **2 June 1973**.



Van Gogh Museum.



In **2017**, the museum had **2.3** million visitors, and was the most visited museum in the Netherlands and the **23rd** most visited art museum in the world.

A ticket costs 18 euros.

Unsold works.



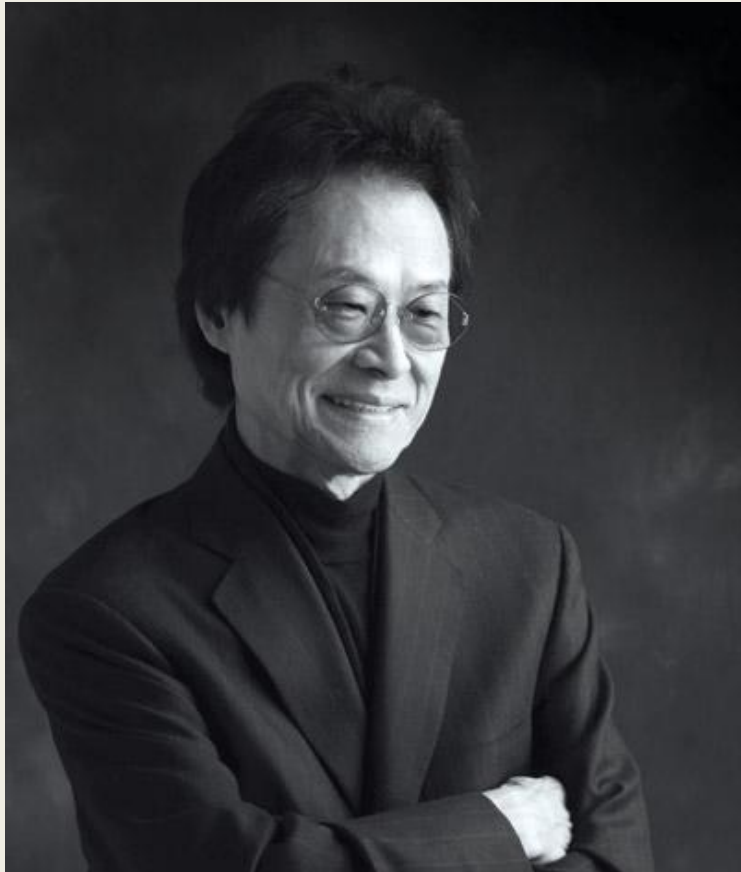
Upon **Vincent van Gogh's** death in **1890**, his work not sold fell into the possession of **Johanna van Gogh-Bonger**. Selling many of **Vincent's** paintings with the ambition of spreading knowledge of his artwork, Johanna maintained a private collection of his works.

Dedicated museum.



Design for a **Van Gogh Museum** was commissioned by the Dutch government in **1963** to Dutch architect and furniture designer **Gerrit Rietveld**. Rietveld died a year later, and the building was not completed until 1973, when the museum opened its doors.

Dedicated museum.



In **1998** and **1999**, the building was renovated by the Dutch architect **Martien van Goor** and an exhibition wing by the Japanese modernist architect **Kisho Kurokawa** was added.

Dedicated museum.



Starting in late **2012**, the museum was closed for renovations for six months. During this period, **75** works from the collection were shown in the Hermitage Amsterdam.

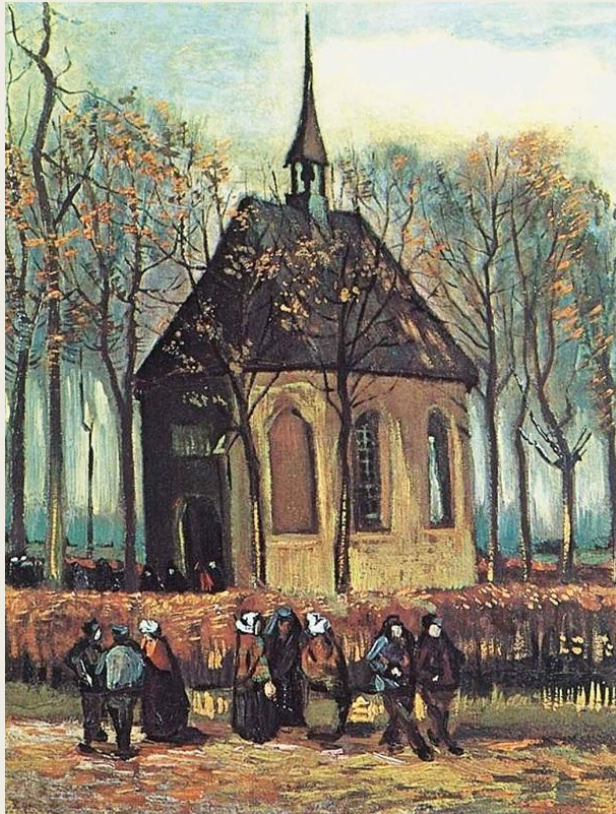
Art thefts.



In **1991**, twenty paintings were stolen from the museum, among them **Van Gogh's** early painting **The Potato Eaters**.

Art thefts.

Congregation leaving the reformed church in Nuenen.



View of the sea at Scheveningen.



Buildings.



The museum is situated at the Museumplein in Amsterdam-Zuid, on the Paulus Potterstraat 7.

The museum consists of **two buildings**, the **Rietveld** building, designed by Gerrit Rietveld, and the **Kurokawa** wing, designed by Kisho Kurokawa.

Rietveld building.



The **Rietveld** building is the main structure of the museum and exhibits the **permanent collection**. The building has a rectangular floor plan and is four stories high.

Kurokawa wing.



The **Kurokawa wing** is used for major temporary exhibitions. The building has an oval floor plan and is three stories high. The entrance to the Kurokawa wing is via an underground tunnel from the **Rietveld building**.

Collection.



The **Van Gogh Museum** has the largest Van Gogh collection in the world. It comprises **200** paintings, **400** drawings, and **700** letters by Vincent van Gogh. The main exhibition chronicles the various phases of Van Gogh's artistic life.

Works by his contemporaries.

Auguste Rodin



Jules Dalou



Works by his contemporaries.

Édouard Manet.



Claude Monet.



Thank you for attention.

