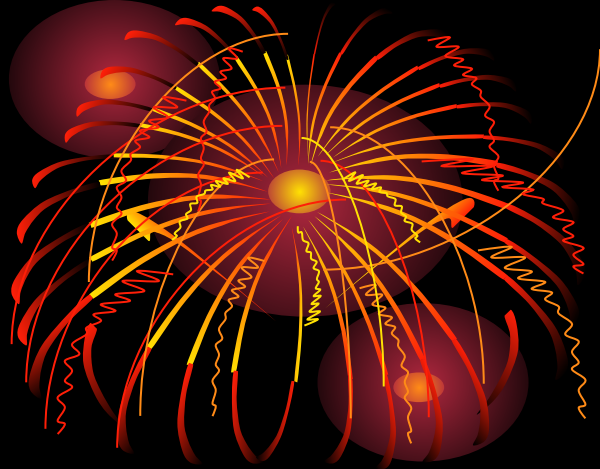


Wong Kei restaurant



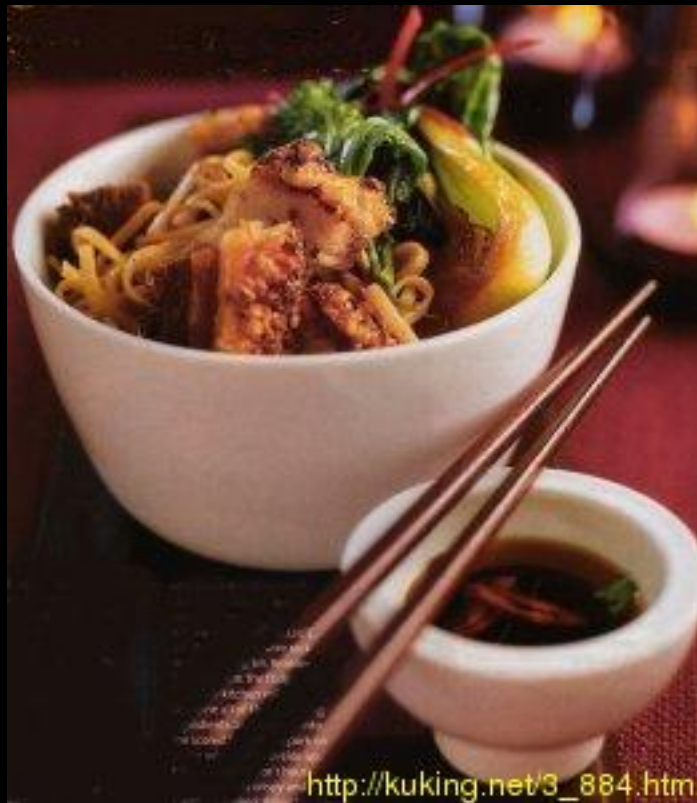
Wong Kei restaurant is situated in London's Chinatown. It is one of the largest Chinese restaurants in the UK. Wong Kei is situated at 41-43 Wardour Street. It is designed by the architect H.M. Wakley.



The building contains four storeys and a garret. The front is designed in a style combining Baroque and art nouveau forms. The doorway is centred between display windows. In 1972, another Chinese restaurant, called Lee Ho Fook occupied the ground floor of the building.



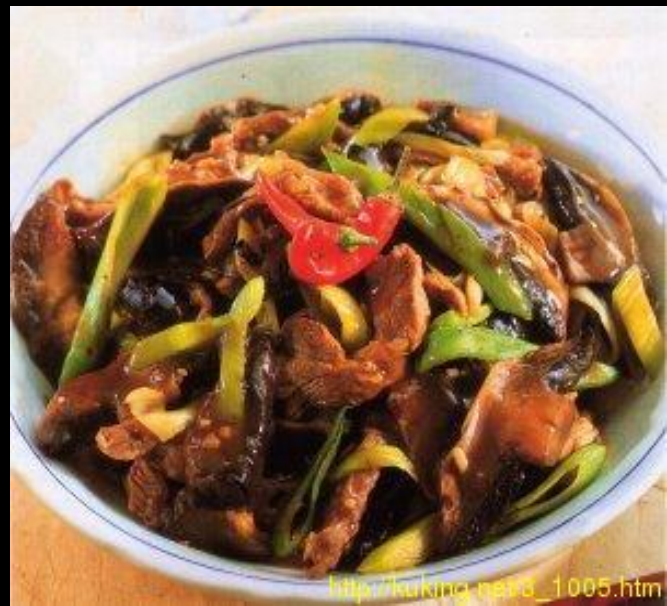
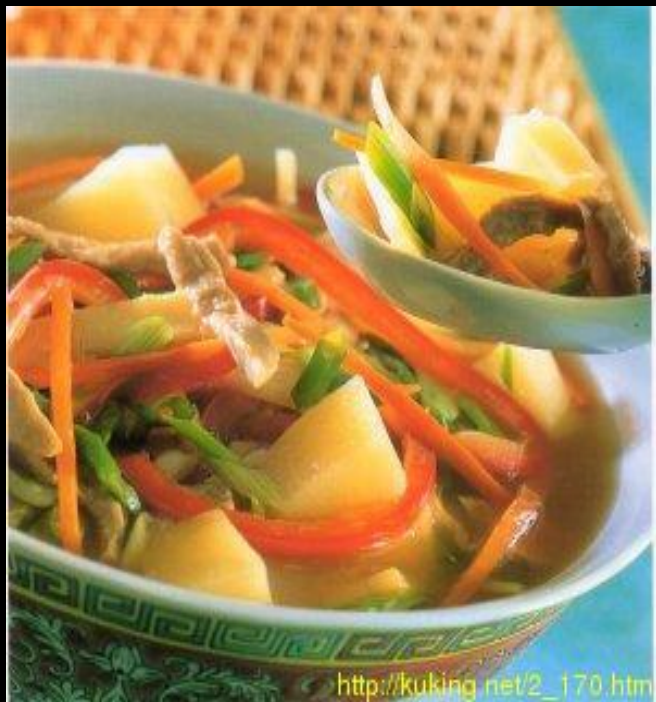
Most regular diners would agree that the cuisine of this restaurant has very authentic Hong Kong/Chinese cuisine.



http://kuking.net/3_884.htm



The usuals are there: Chicken and Sweetcorn soup, Duck with Pancakes, spring Rolls etc.



The most popular Menu choices at Wong Kei are just one plate meals based around rice, dishes with meat or vegetables. The popular combinations include barbecue pork, roast chicken, beef, roasted duck etc.



http://kuking.net/3_1039.htm



http://kuking.net/3_1054.htm

The based deserts are pastry filled with custard, biscuit with hazel nut and fruit salad.



Wong Kei is popular with
locals and tourists, serving
Chinese food at low prices.

