



The animals and birds ABC

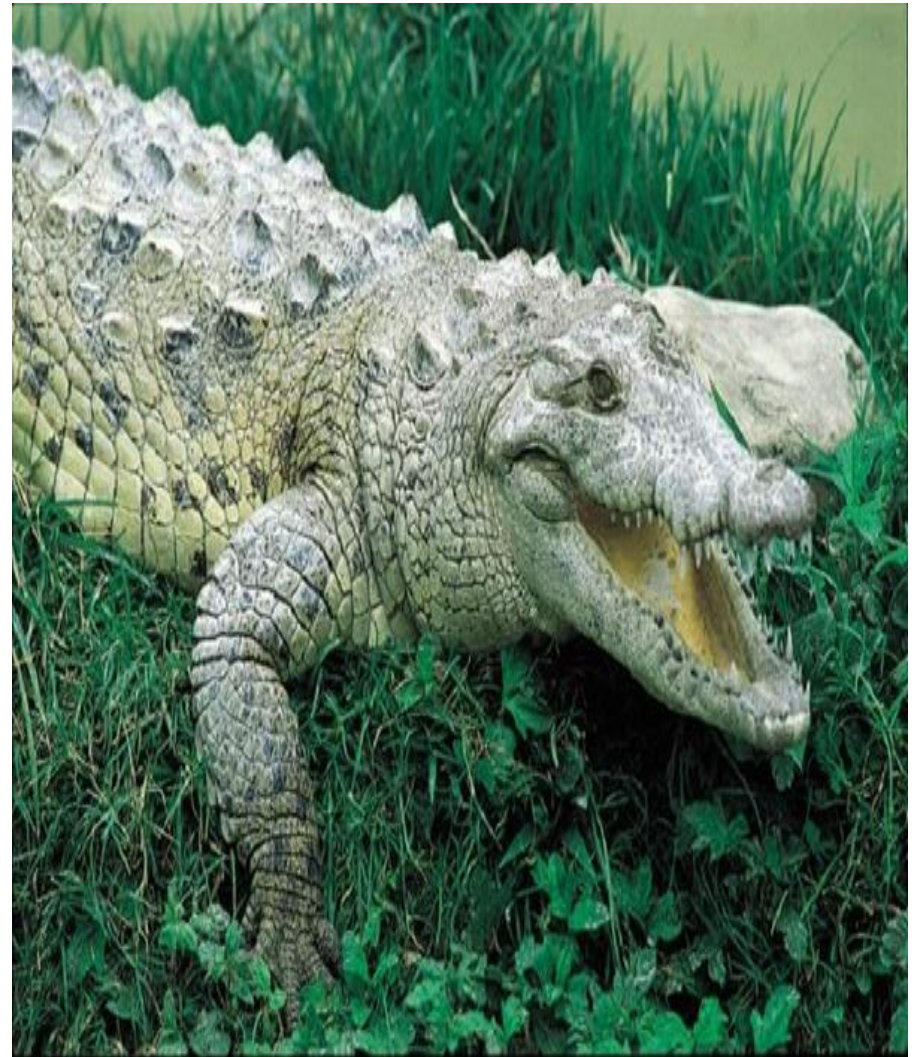
A a

alligator

The alligator sails quickly

It goes on the land slowly.

It lives in Africa



B b



- **Bear**

The Bear lives in the forest.

It loves fish and honey.

It sleeps in winter.

C c

A cat.

A cat is a pet.

It loves fish and milk

It is a kind animal.



D d



■ **Dog**

It is a domestic animal.

They do not love cats.

**The dogs are strong.
They help people.**

E e

An elephant

The elephant is big and strong.

They live in Africa.

They are wild animals



F f



- **A Fox**

It is a wild animal.

It is cunning.

It lives in the forest.

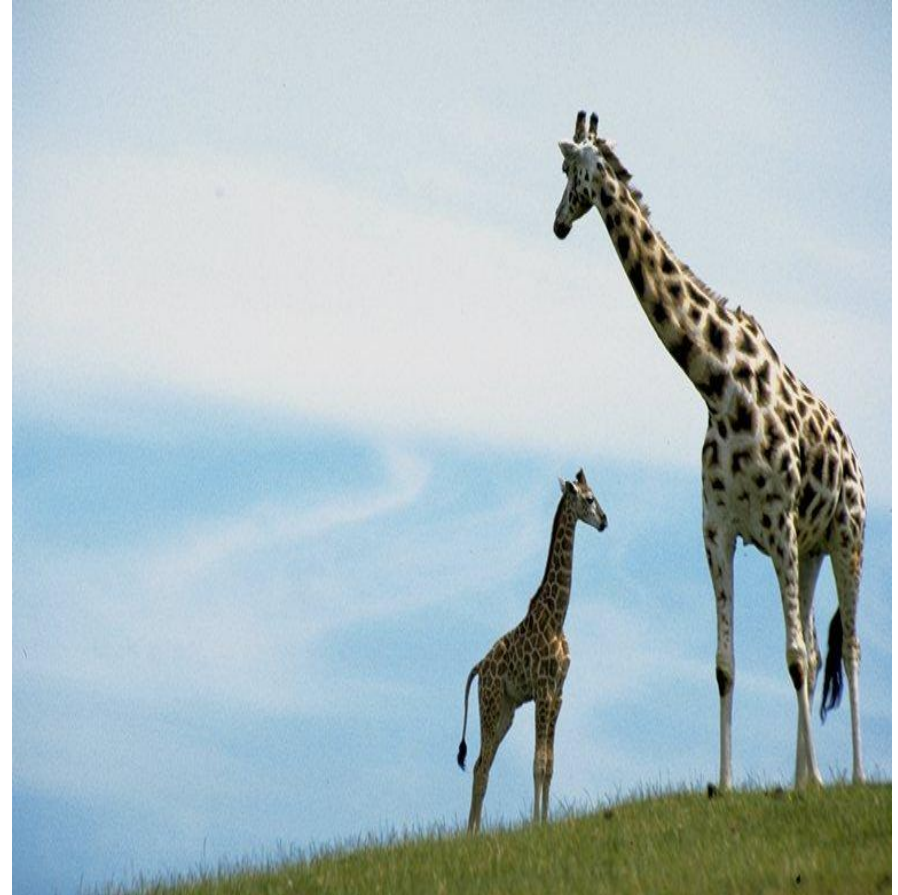
G g

- giraffes

They live in Africa.

They have long necks.

They are the wild animals.



H h



■ *hippopotamus*

They are funny.

**They live in Africa and
in the Zoo.**

They are fatЮ

l i

■ *Iguanas*

They are small.

They eat bugs.

They live in the jungle.



J j



- ***Jaguars***

They run quickly.

They are wild animals.

They live in the jungle.

K k

- ***Kangaroo***

The kangaroo jumps highly.

It is a wild animal.

It lives in Africa.



LI



- ***Lion***

The Lion is a wild animal.

It is strong.

It lives in Africa.

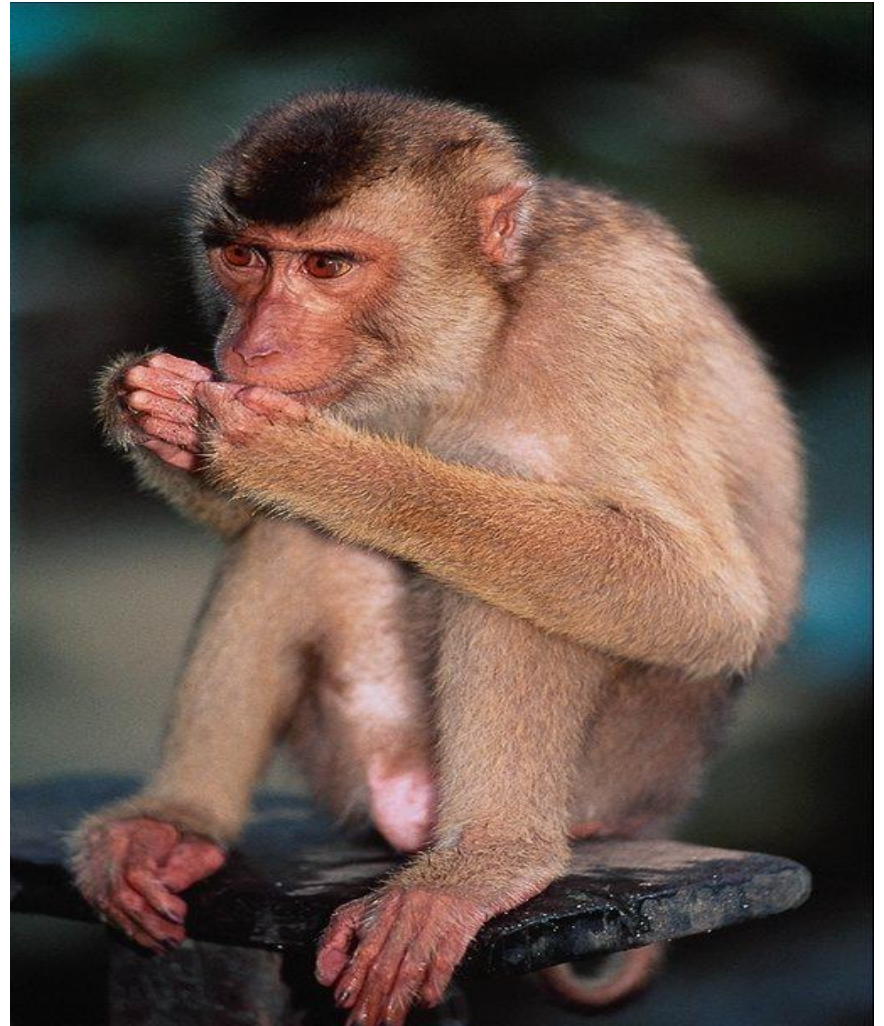
M m

■ **Monkey**

It is a wild animal.

It loves bananas.

It lives in Africa and in the Zoo.



N n



Newt

It is lazy.

It loves bugs.

It lives in the jungle.

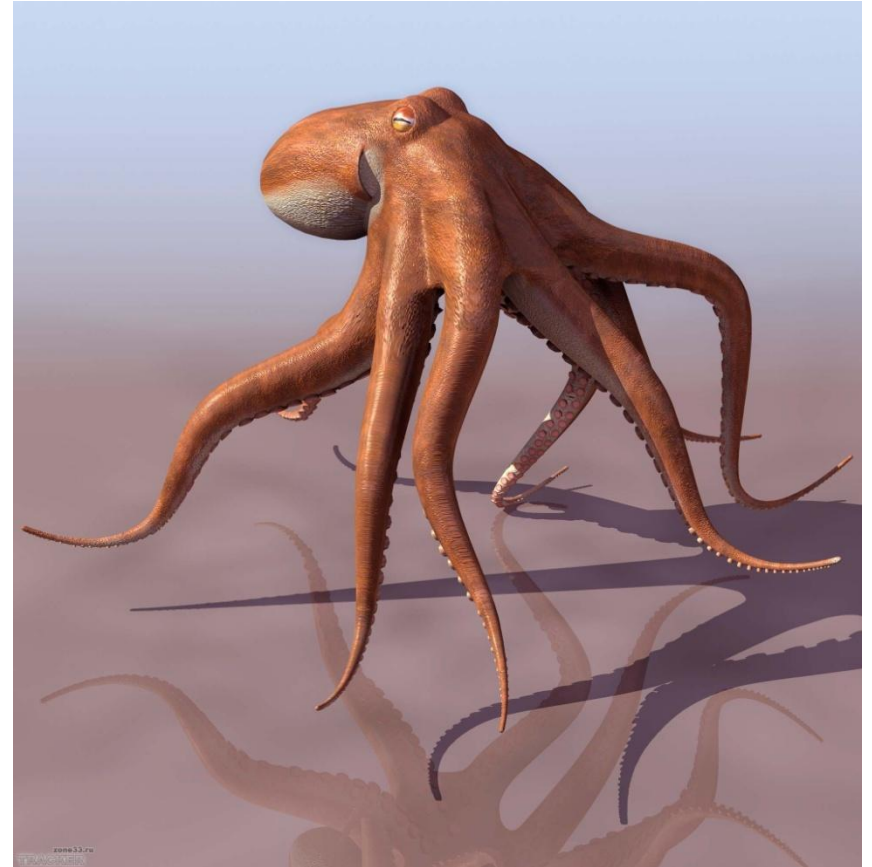
O o

■ *Octopus*

It is a sea animal.

It has many legs.

It lives in the sea.



P p



- ***Pretty peacock***

It has the big tail.

It is very beautiful.

It lives in the Zoo.

Q q



quails

They are birds. They fly.

They live in the forest.

R r

■ *Rabbit*

It runs quickly.

It eats grass.

**It lives in the
forest and in
the farm.**



S s



Snake

**A snake is dangerous.
It lives in the forest and
in the jungle.**

T t

Tiger

**It is strong.
It is a wild animal.
It lives in the jungle.
It is the dangerous
animal.**



U u



- ***umbrella bird***

It is small.

It has a head like the umbrella.

It lives in the jungle.

V v

■ **Vulture**

It is a wild bird.

It eats mice.

It flies quickly.



W w



Wolf

It is a wild animal.

It is strong.

It lives in the forest

X x



- ***Fox***

It lives in the taiga.

It is a wild animal.

Y y

■ ***Yak***

It is big.

It has big horns.

It is strong.



Z z



- **Zebras**

they are wild animals.

They live in Africa.

They live in the Zoo.

Thank you for attention!

