



# The animals and birds ABC

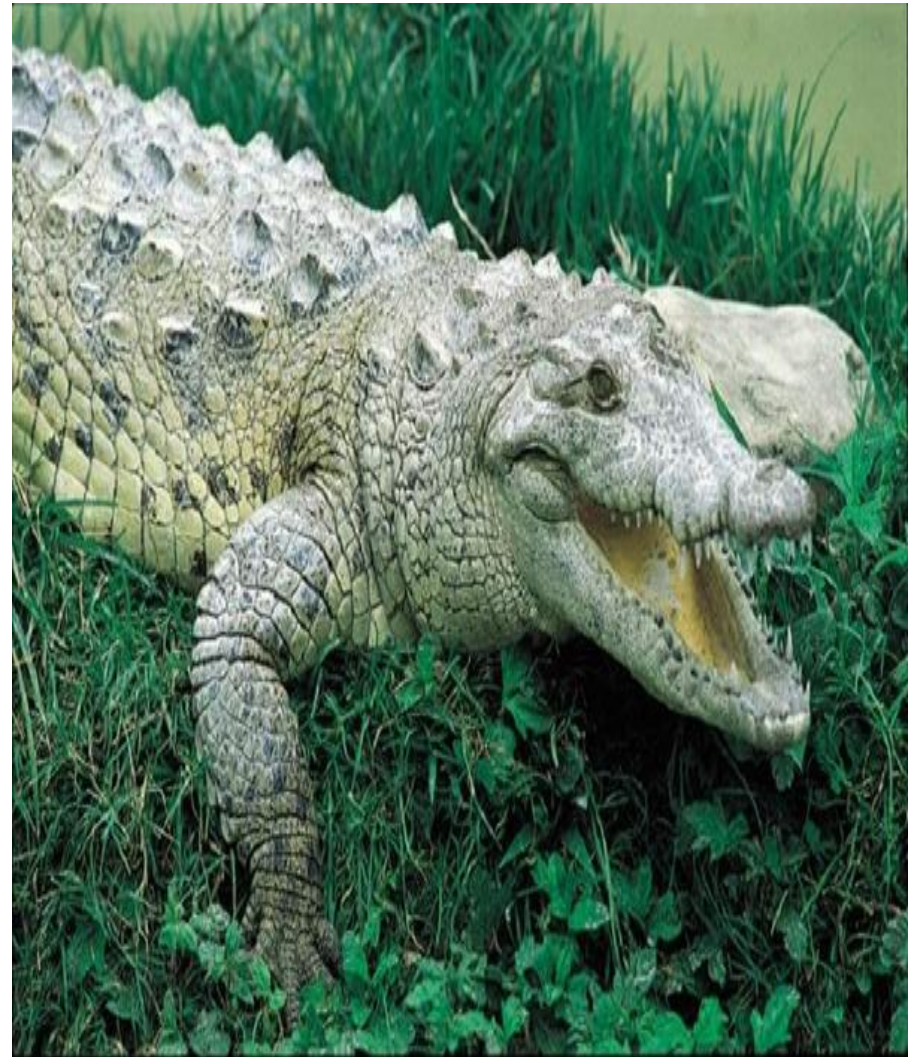
A a

*alligator*

***The alligator sails quickly***

**It goes on the land slowly.**

**It lives in Africa**



B b



- ***Bear***

***The Bear lives in the forest.***

***It loves fish and honey.***

***It sleeps in winter.***

C c

A cat.

**A cat is a pet.**

**It loves fish and milk**

**It is a kind animal.**



D d



■ **Dog**

**It is a domestic animal.**

**They do not love cats.**

**The dogs are strong.  
They help people.**

E e

*An elephant*

**The elephant is big and strong.**

**They live in Africa.**

**They are wild animals**



F f



- **A Fox**

**It is a wild animal.**

**It is cunning.**

**It lives in the forest.**

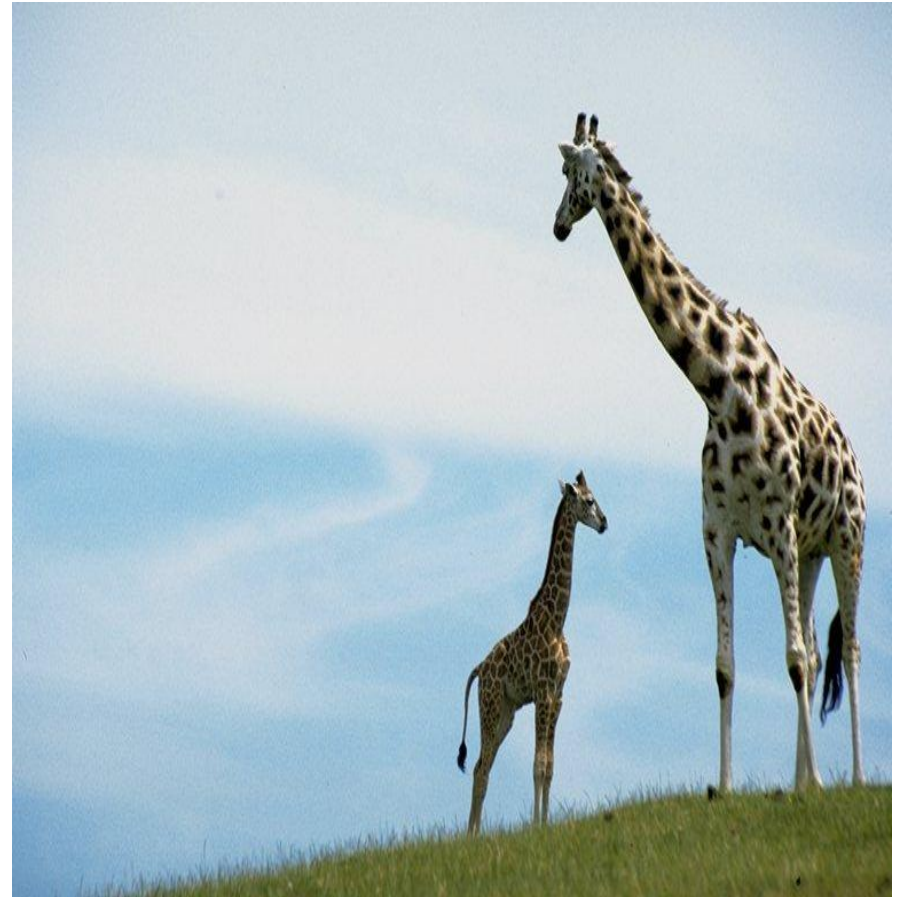
# G g

- giraffes

**They live in Africa.**

**They have long necks.**

**They are the wild animals.**





H h



■ *hippopotamus*

**They are funny.**

**They live in Africa and  
in the Zoo.**

**They are fatЮ**

l i

■ *Iguanas*

**They are small.**

**They eat bugs.**

**They live in the jungle.**



J j



- ***Jaguars***

**They run quickly.**

**They are wild animals.**

**They live in the jungle.**

# K k

- ***Kangaroo***

**The kangaroo jumps highly.**

**It is a wild animal.**

**It lives in Africa.**



LI



- *Lion*

**The Lion is a wild animal.**

**It is strong.**

**It lives in Africa.**

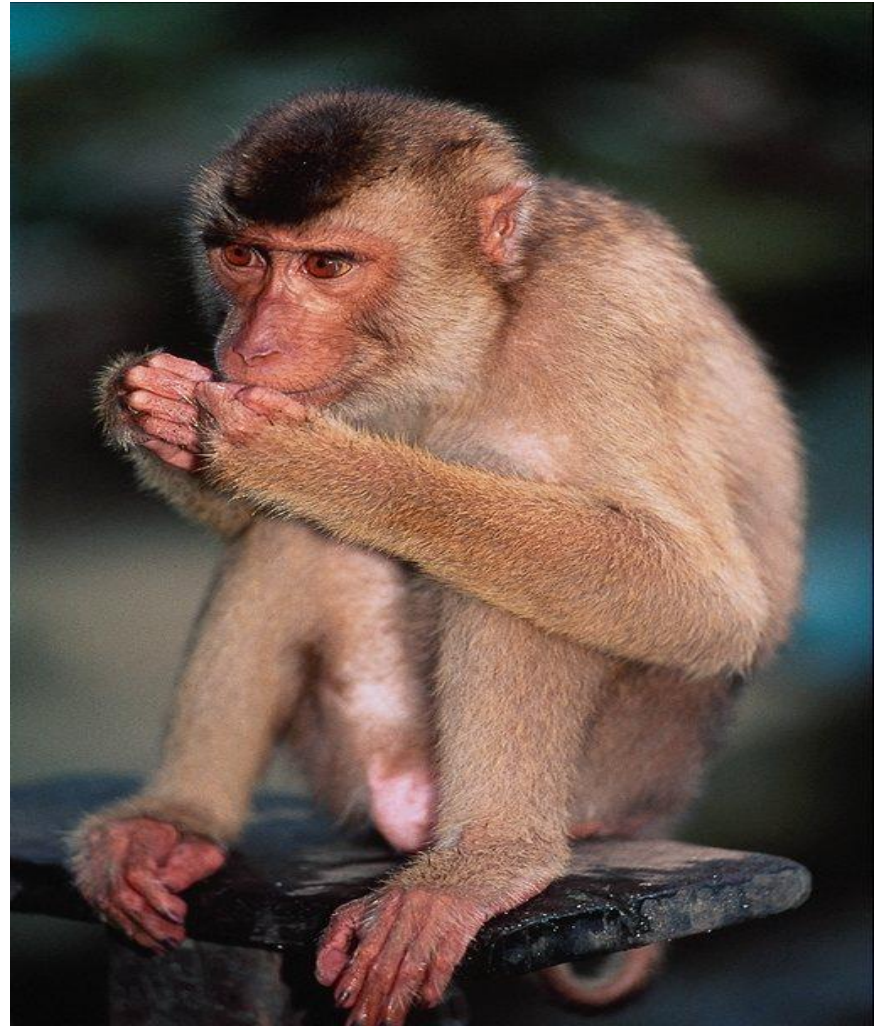
M m

■ **Monkey**

**It is a wild animal.**

**It loves bananas.**

**It lives in Africa and in the Zoo.**



N n



***Newt***

**It is lazy.**

**It loves bugs.**

**It lives in the jungle.**

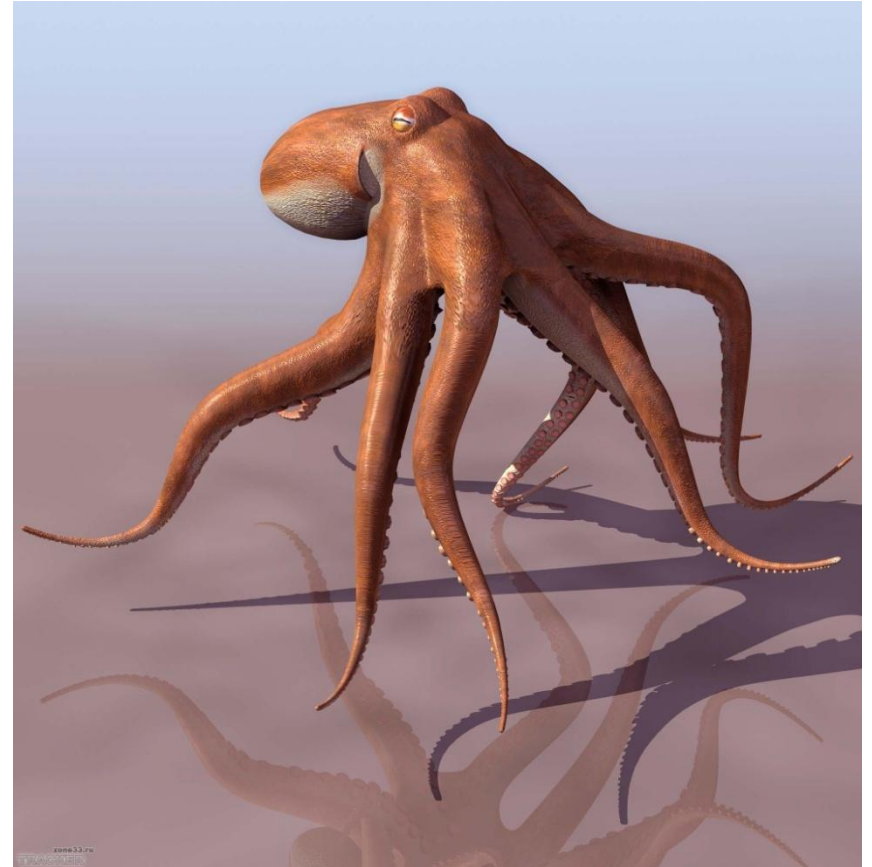
O o

■ *Octopus*

**It is a sea animal.**

**It has many legs.**

**It lives in the sea.**





P p



- ***Pretty peacock***

**It has the big tail.**

**It is very beautiful.**

**It lives in the Zoo.**

Q q



*quails*

**They are birds. They fly.**

**They live in the forest.**

# R r

## ■ *Rabbit*

**It runs quickly.**

**It eats grass.**

**It lives in the  
forest and in  
the farm.**



S s



## *Snake*

**A snake is dangerous.  
It lives in the forest and  
in the jungle.**

T t

## *Tiger*

**It is strong.  
It is a wild animal.  
It lives in the jungle.  
It is the dangerous  
animal.**



U u



- ***umbrella bird***

**It is small.**

**It has a head like the umbrella.**

**It lives in the jungle.**

V v

■ **Vulture**

**It is a wild bird.**

**It eats mice.**

**It flies quickly.**



W w



Wolf

**It is a wild animal.**

**It is strong.**

**It lives in the forest**



X x



- ***Fox***

**It lives in the taiga.**

**It is a wild animal.**

Y y

■ ***Yak***

**It is big.**

**It has big horns.**

**It is strong.**



Z z



- **Zebras**

**they are wild animals.**

**They live in Africa.**

**They live in the Zoo.**

Thank you for attention!

