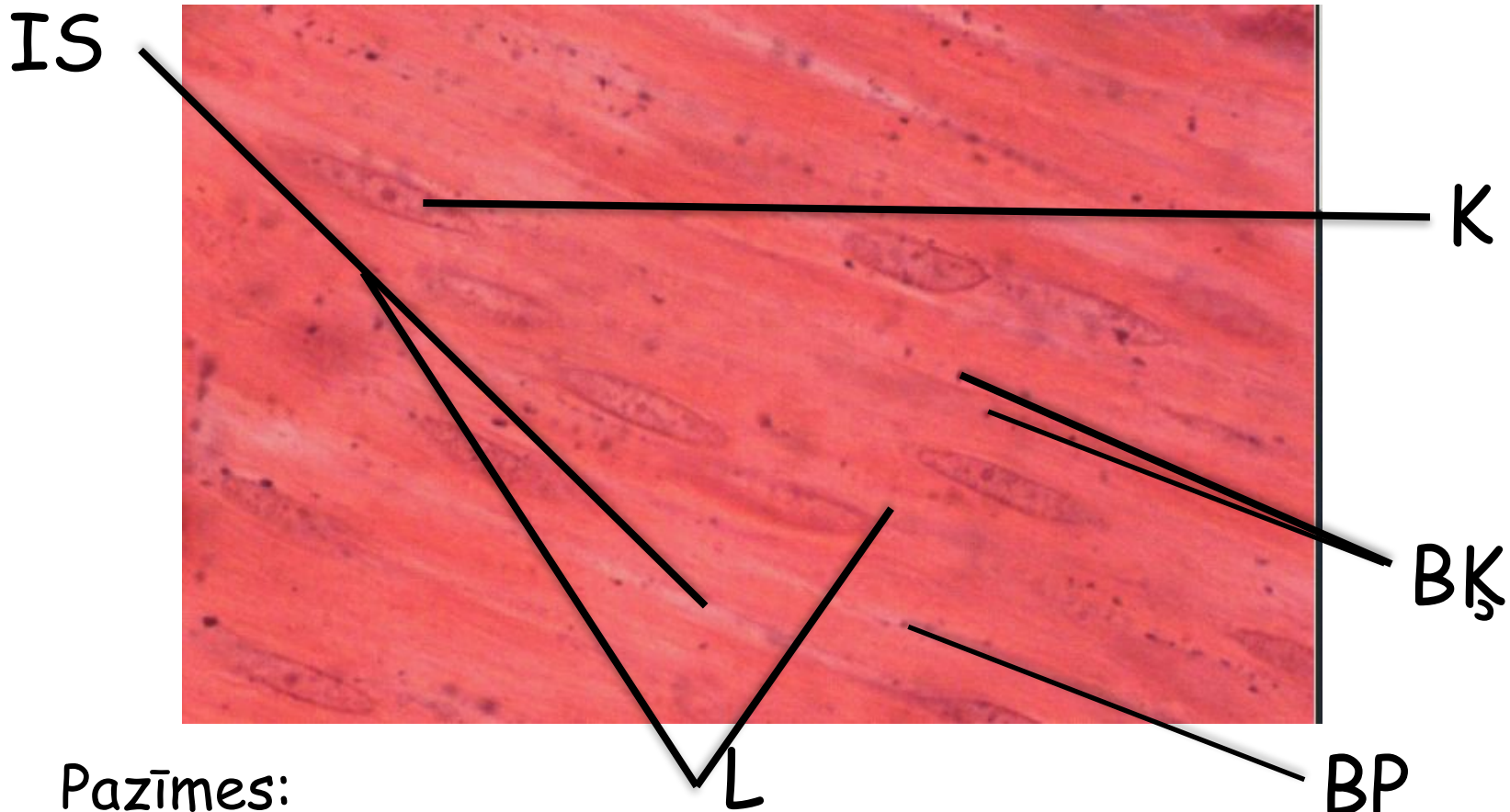


Gludie muskuļi



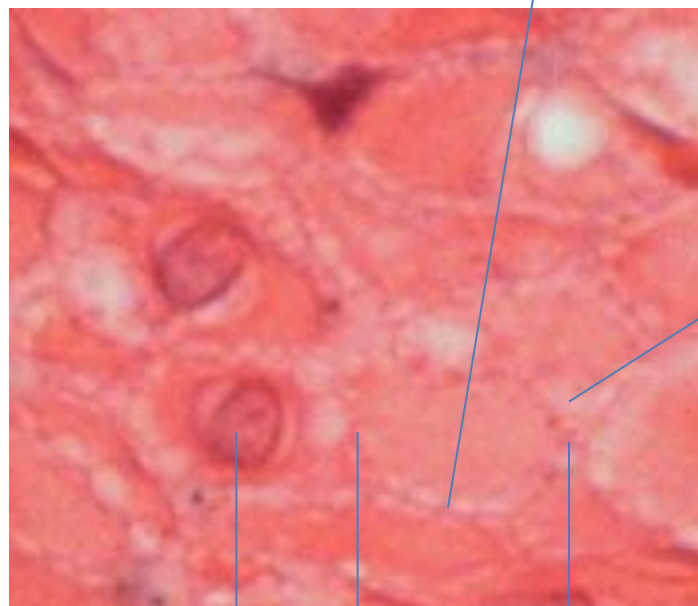
Pazīmes:

- Šūnām nosmailināti gali, $l=30$ iedaļas, $d=4$ iedaļas
- Vārpstveida kodols šūnas centrā, $l=8$, $d=3$
- Blīvie ķermenīši (BKs)
- Blīvās plātnītes (BP)
- Irdenie saistaudi starp šūnām (IS)
- Šūnu savienotas laterāli un proksimāli-distāli.

20 mikrometri

Šķērsgriezums

Šūnas ir savienotas

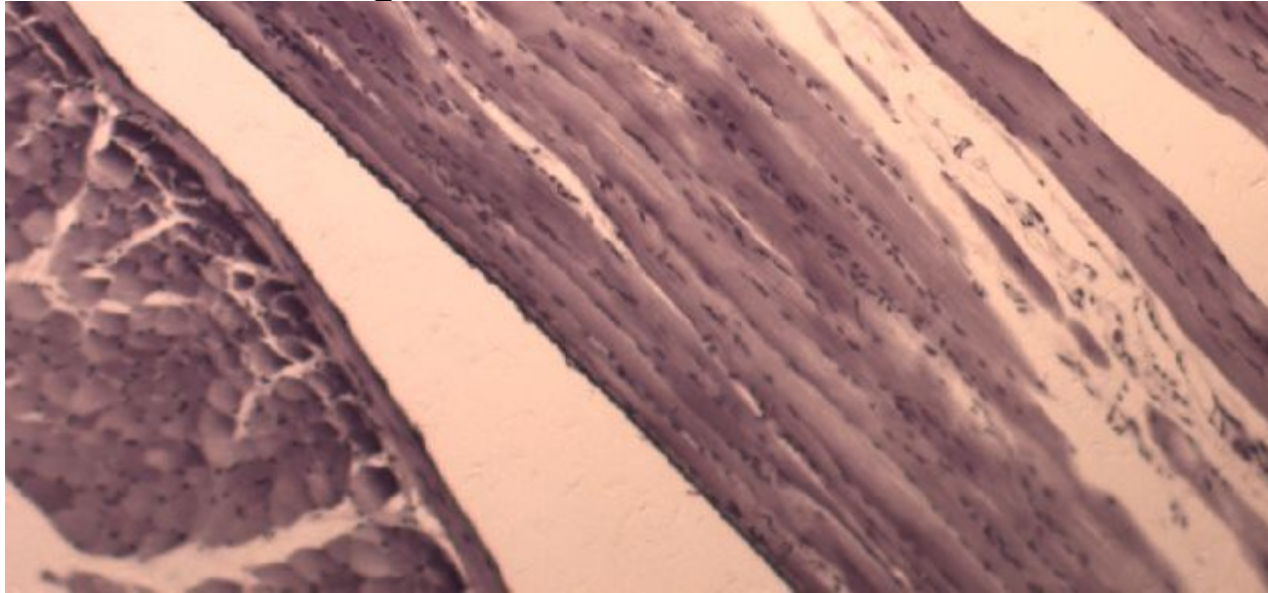


IS

K

L

Skeleta šķērssvītrotie muskuļi



Endomīzijs

Primīzijs ar asinsvadu

Fibroblasta kodols

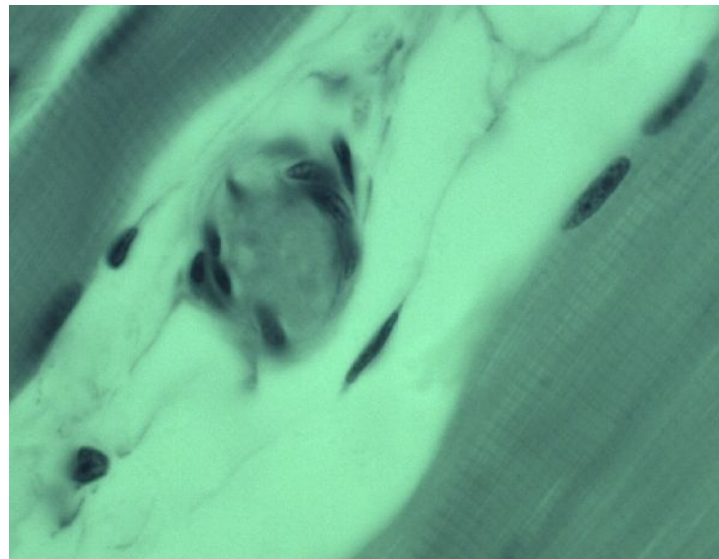
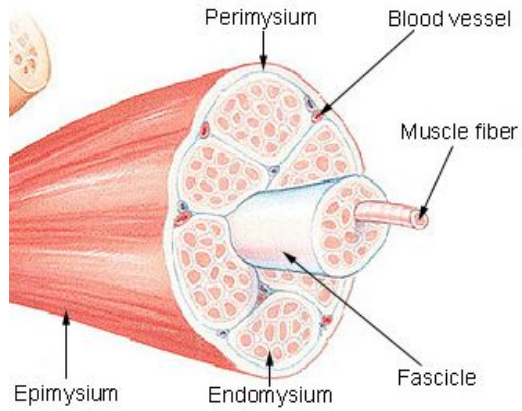
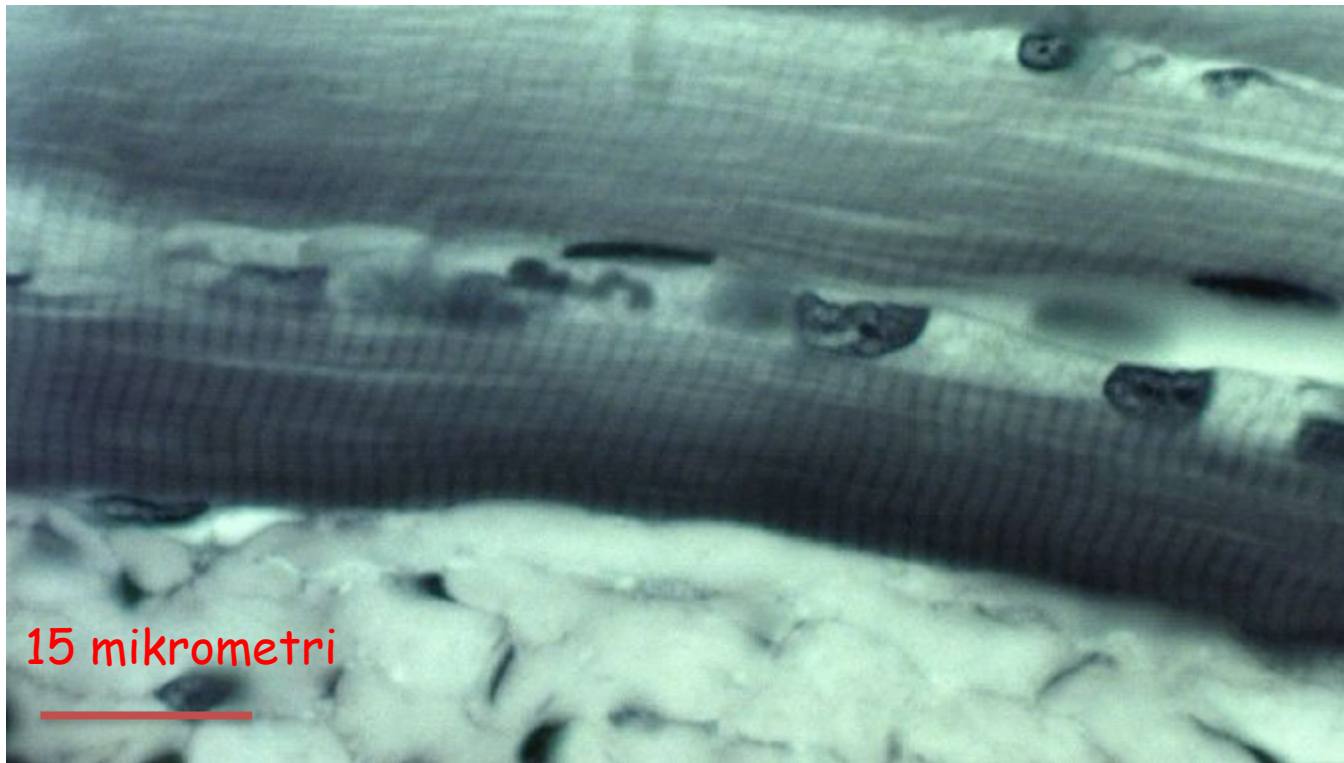
2 miocītu fragmenti

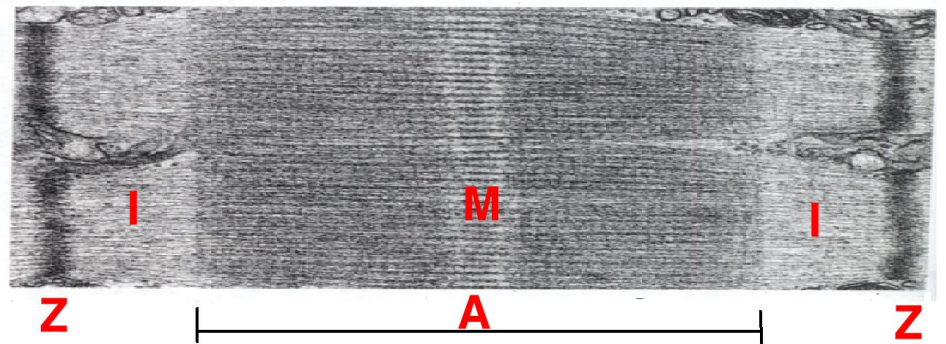
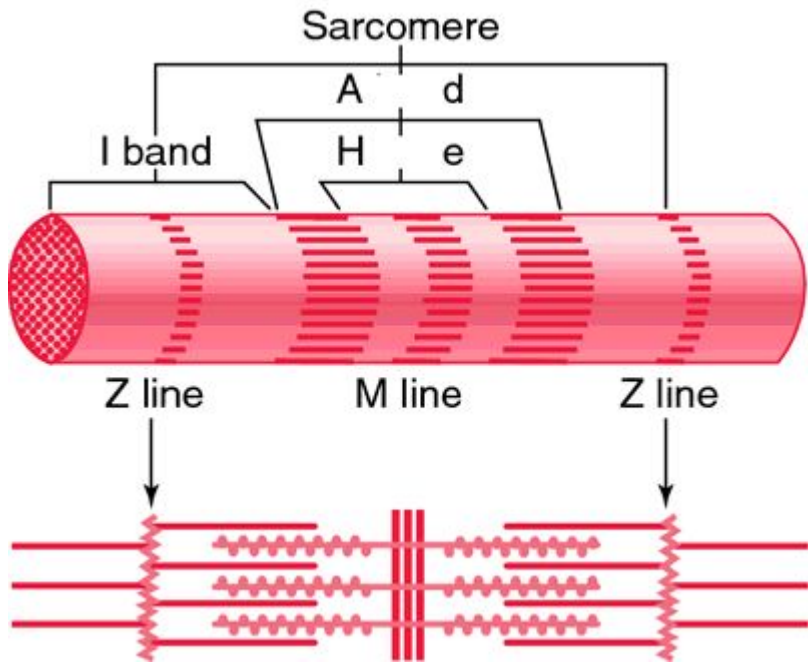
Miocīta kodoli

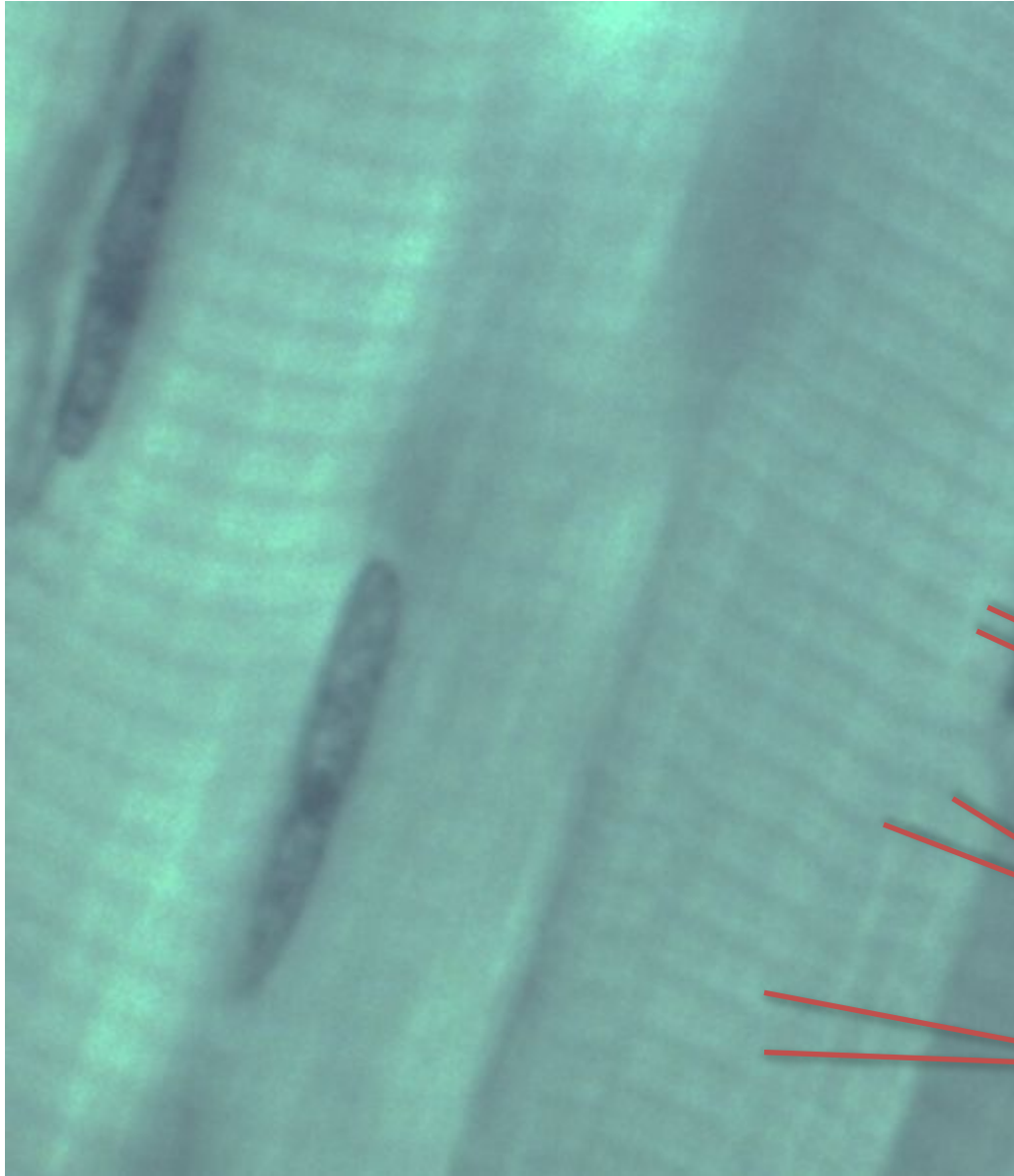
A zona

Z līnija

I - josla





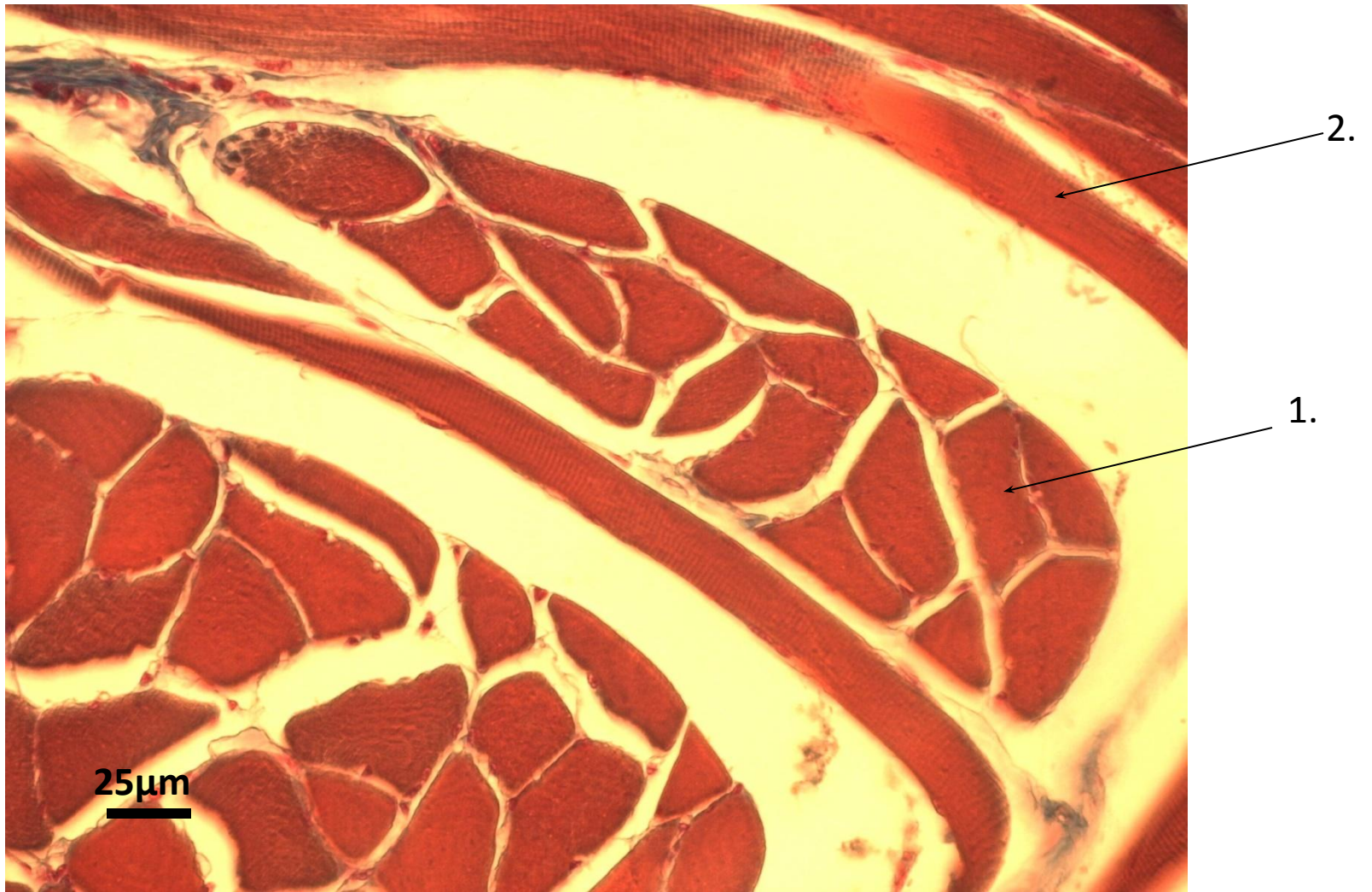


A

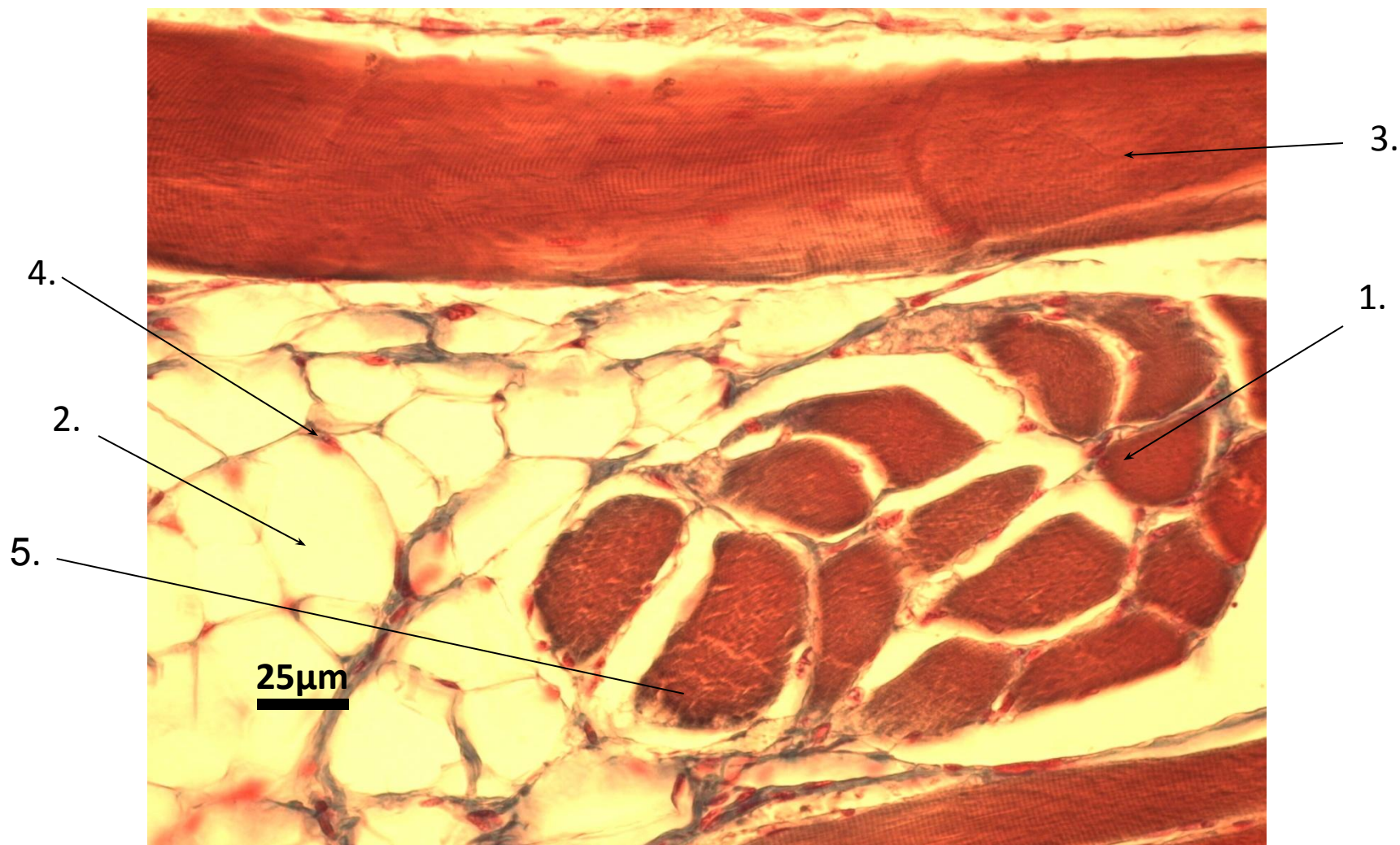
I

Z

Mēle

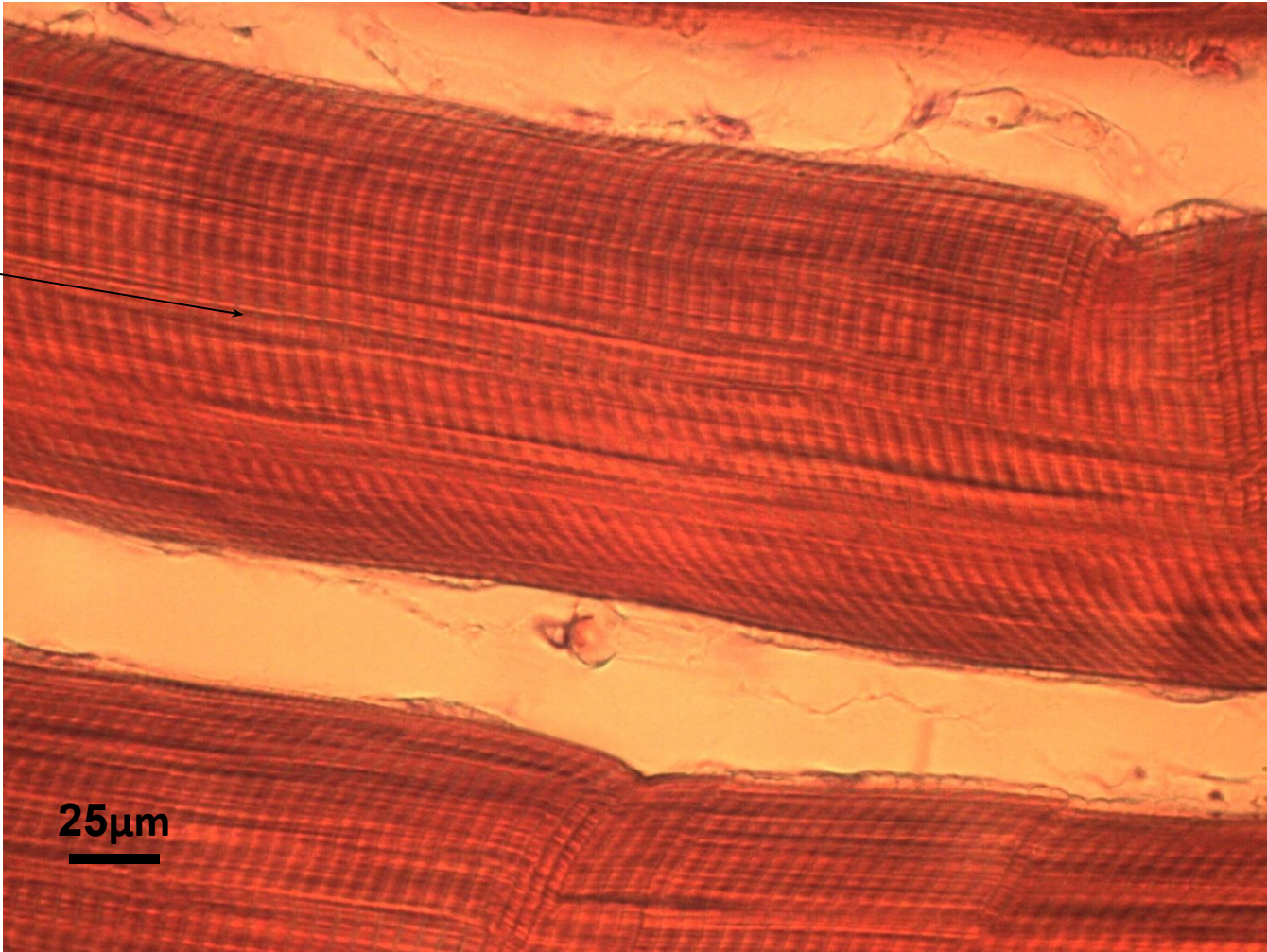


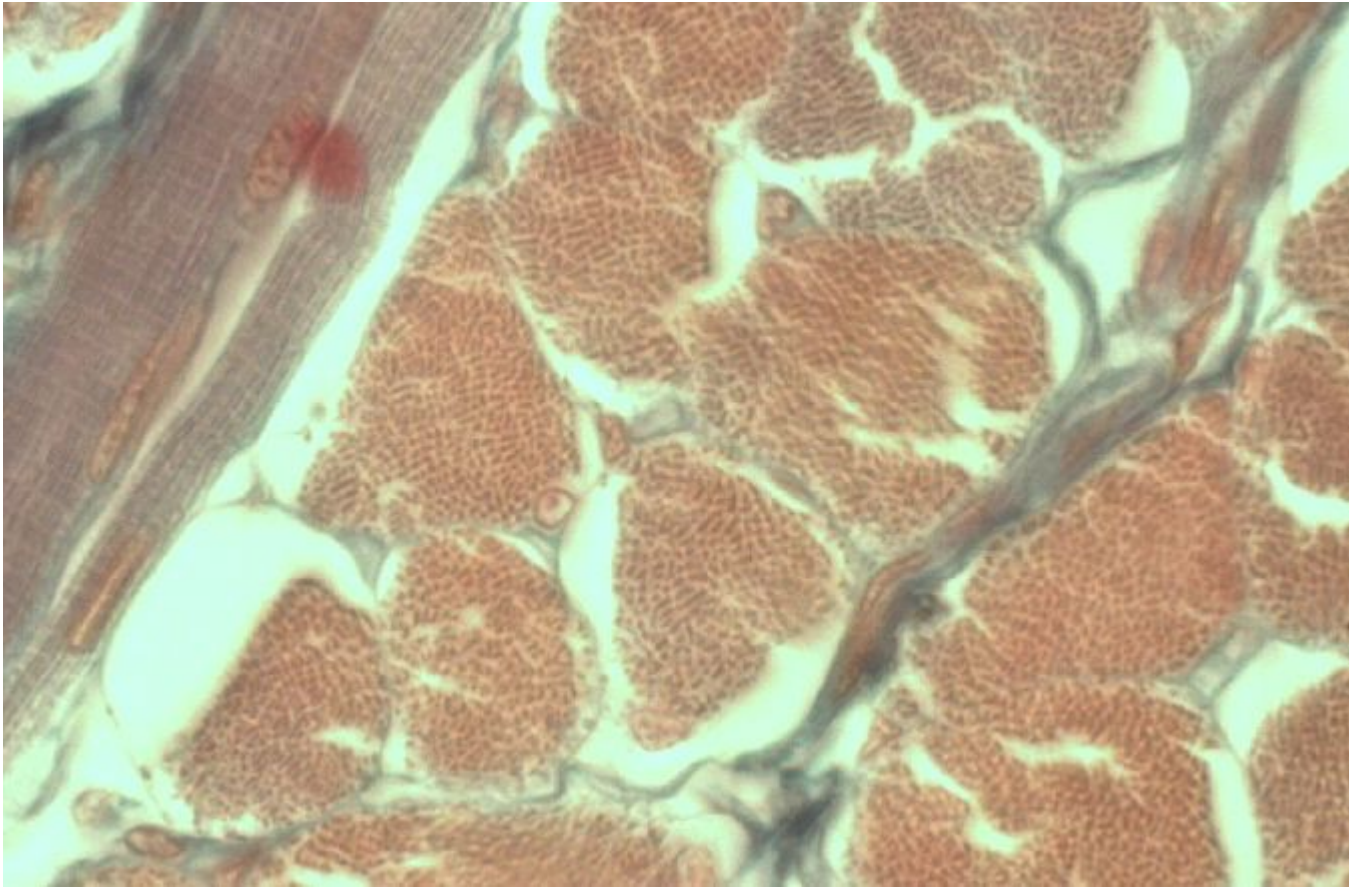
1. Šķērsgriezums; 2. Gargriezums.



1. Šķērsgriezums, 2. Adipocīts, 3. Gargriezums, 4. Kodols, 5. – Koheima laukums.

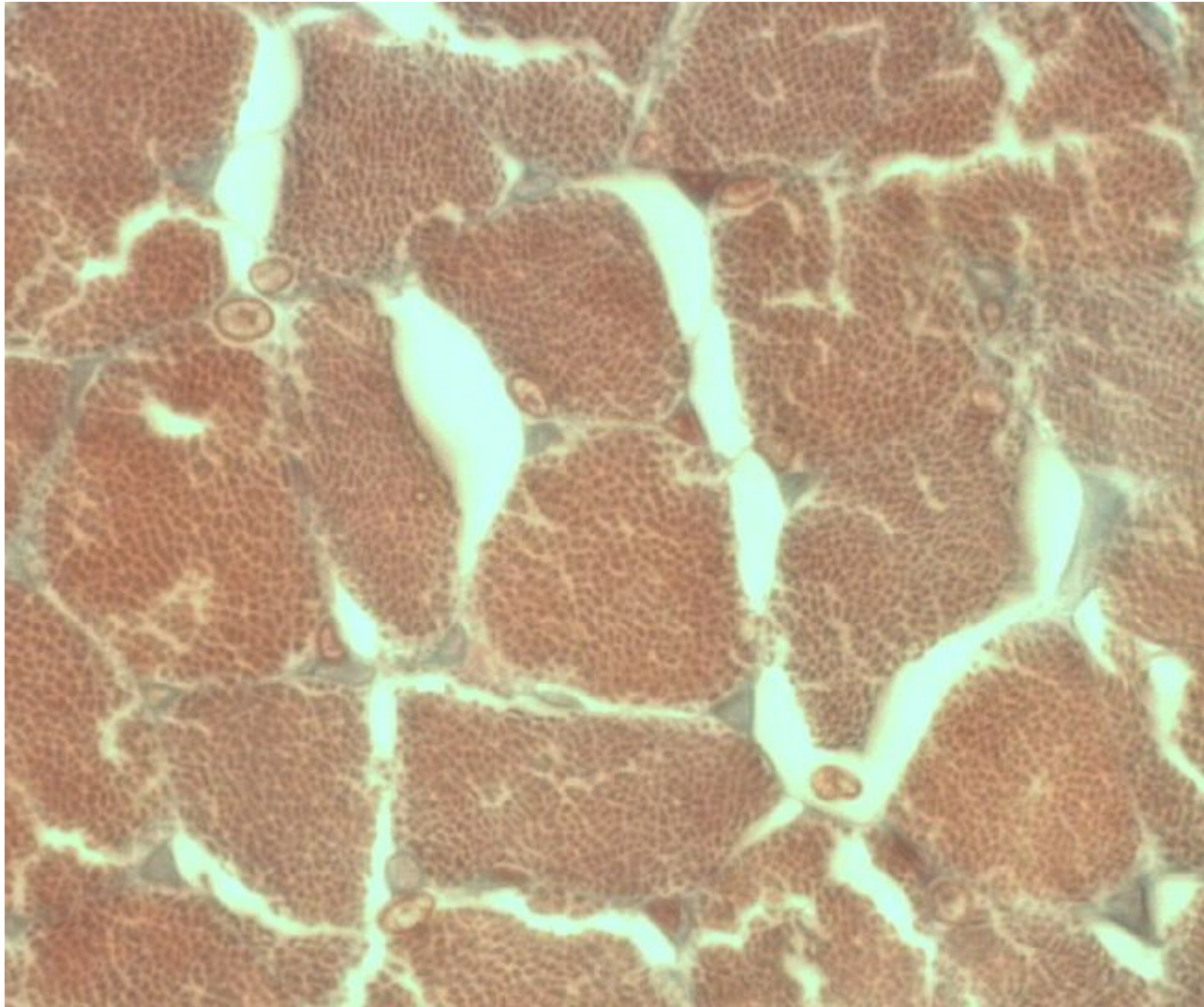
1.

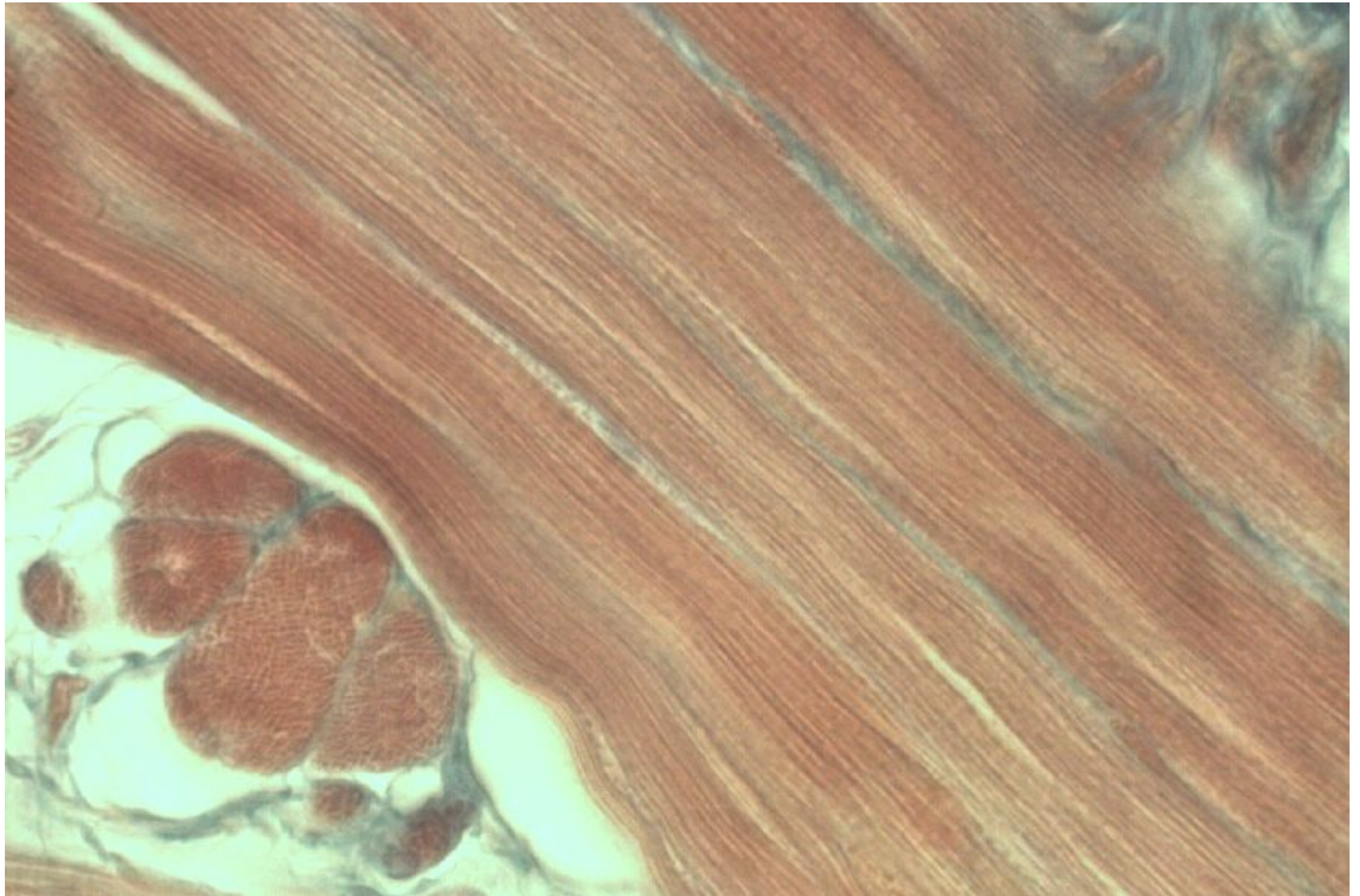




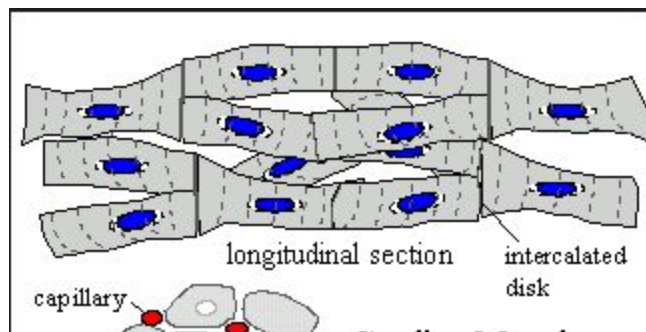
Pazīmes

- 1.
- 2.
- 3.
- 4.
- 5.
- 6.
- 7.
- 8.
- 9.
- 10.





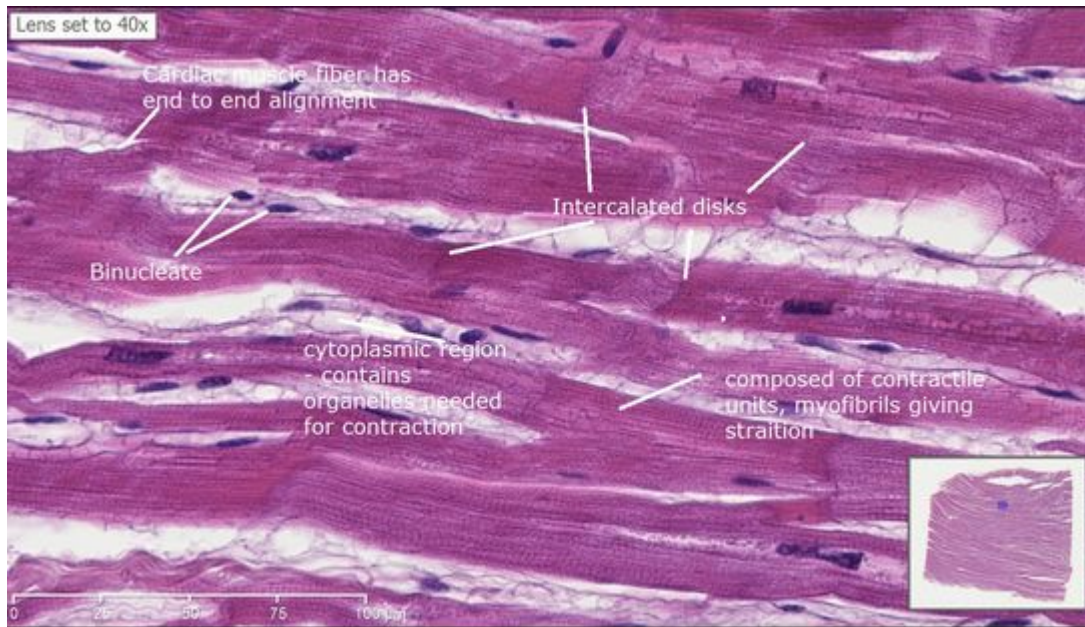
Sirds muskuļi

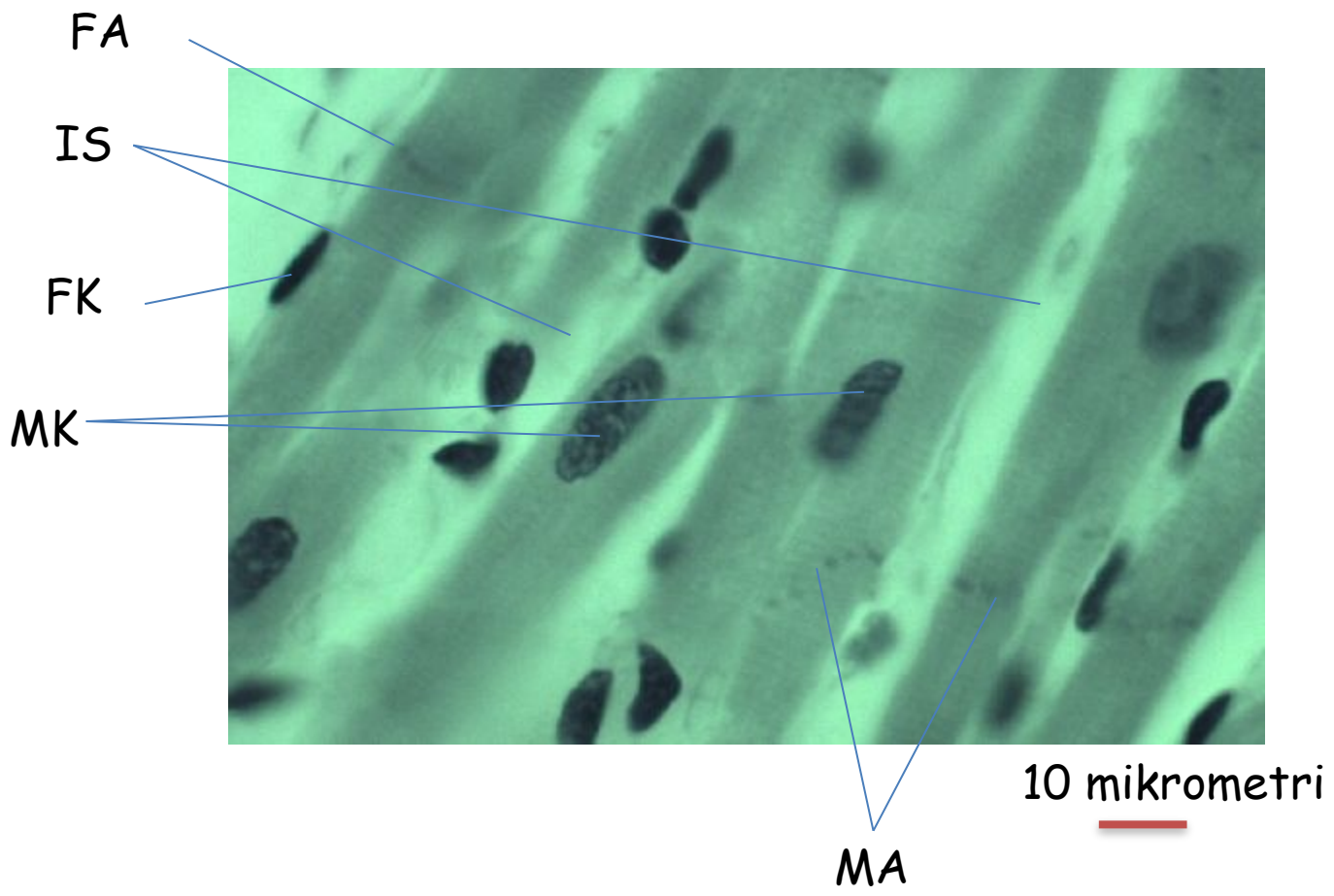


3 kļūdas zīmējumā

- 1.
- 2.
- 3.

Cardiac muscle, Cardiomyocytes





A zona
I josla

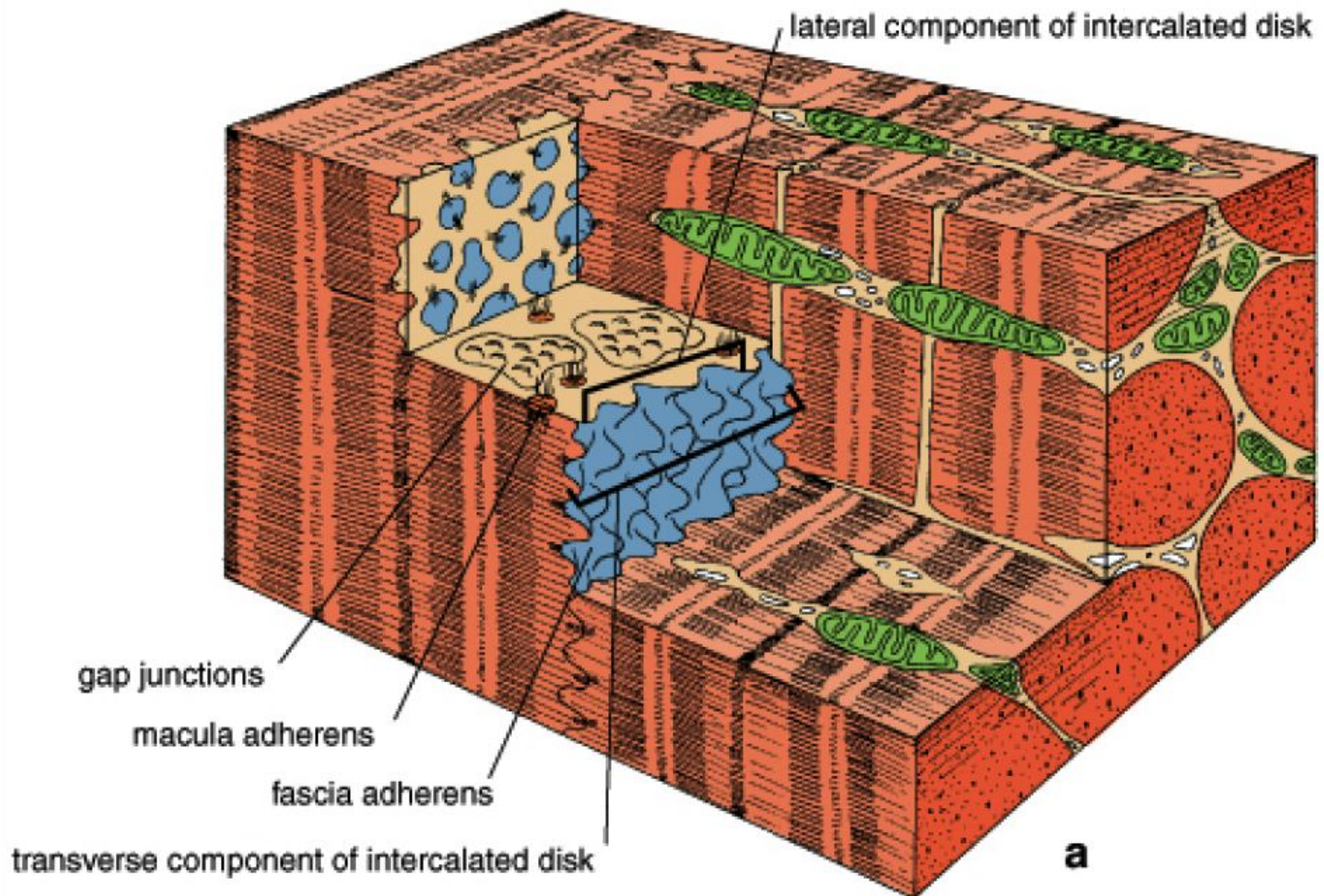
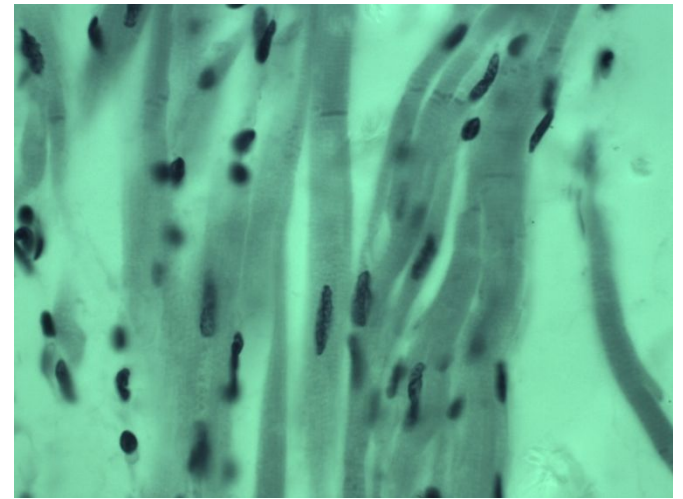


Figure 10.15a. **Three-dimensional view of an intercalated disk.**



Pazīmes:

- Svītrojums perpendikulāri šūnas garenasij

- Eliptisks kodols šūnas centrā

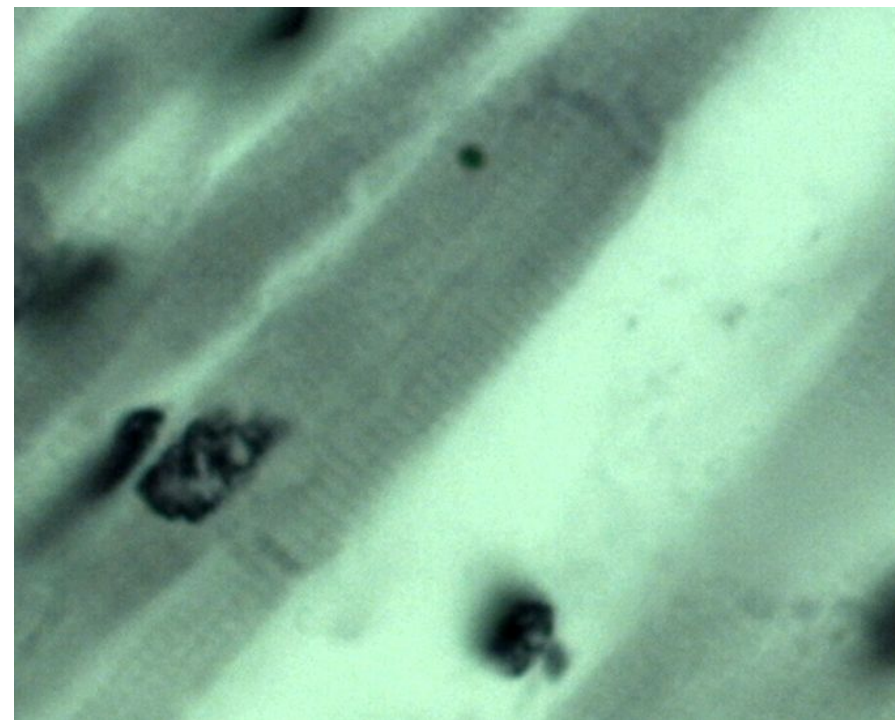
- Šūnas sazarojās

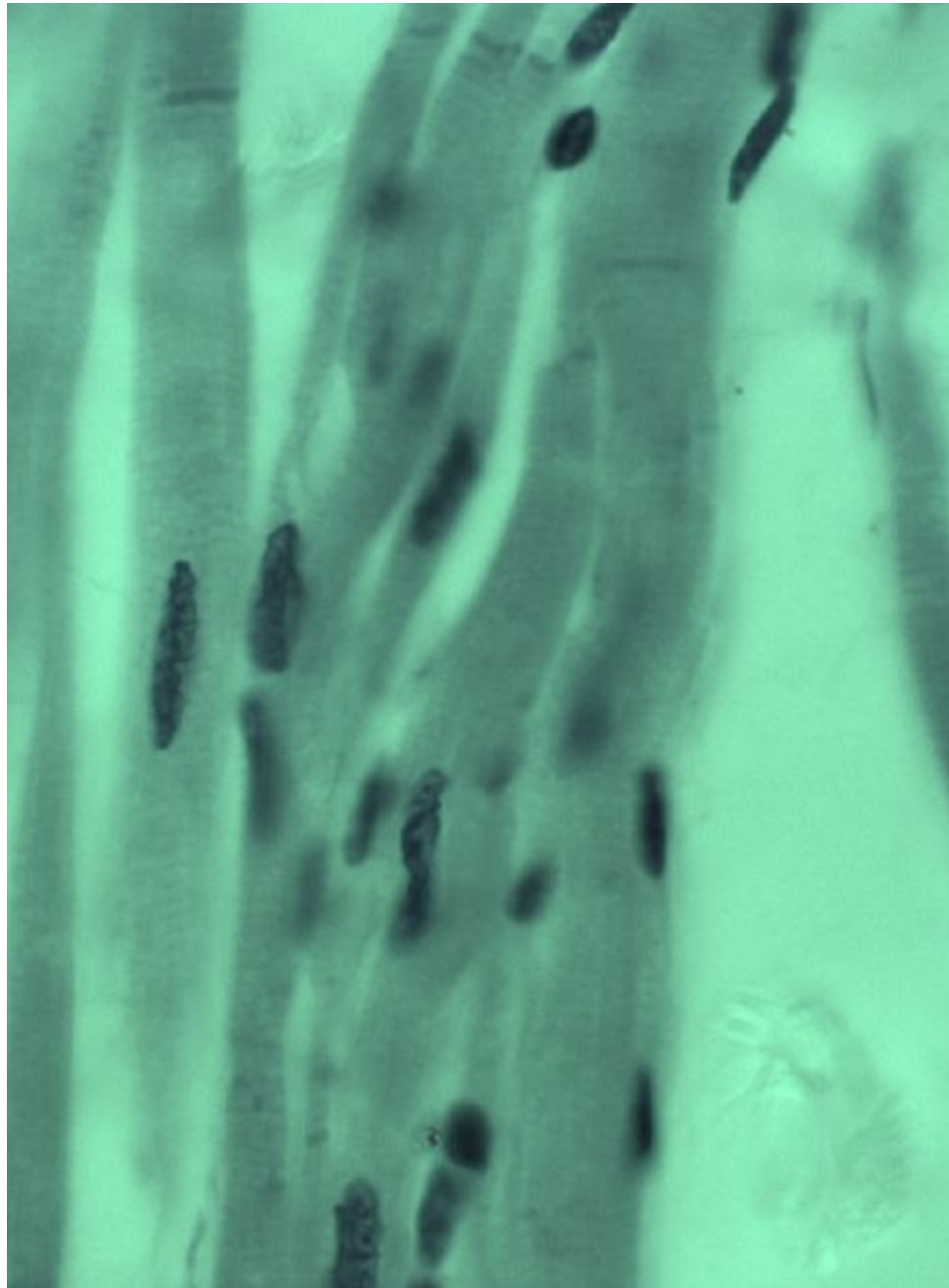
- Starpdiski

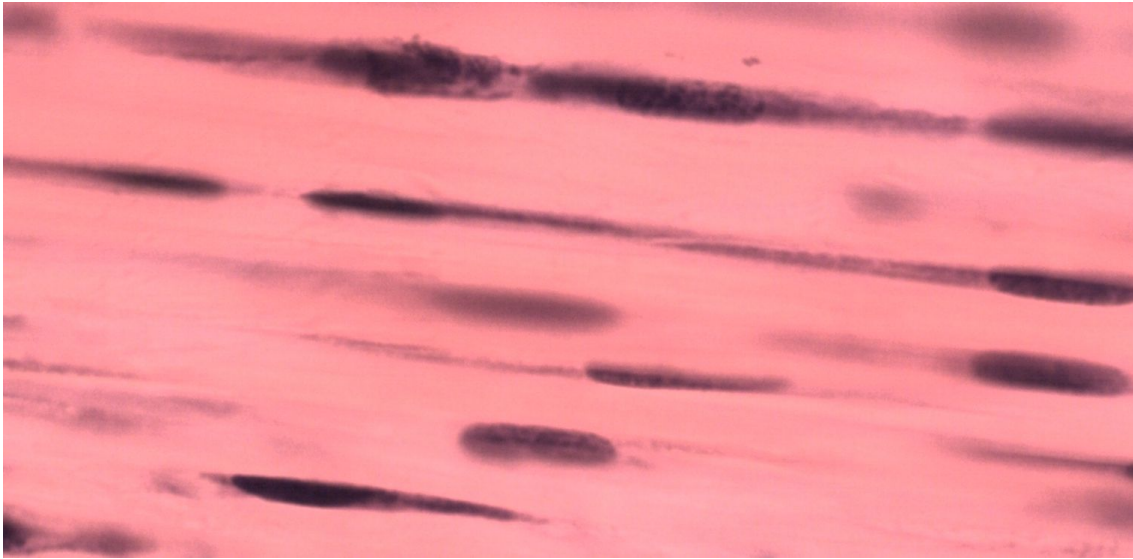
a) Distālie un proksimālie gali,

b) Laterāli savienojumi

- Starp šūnām ir denie saistaudi







Audi:
Pazīmes: