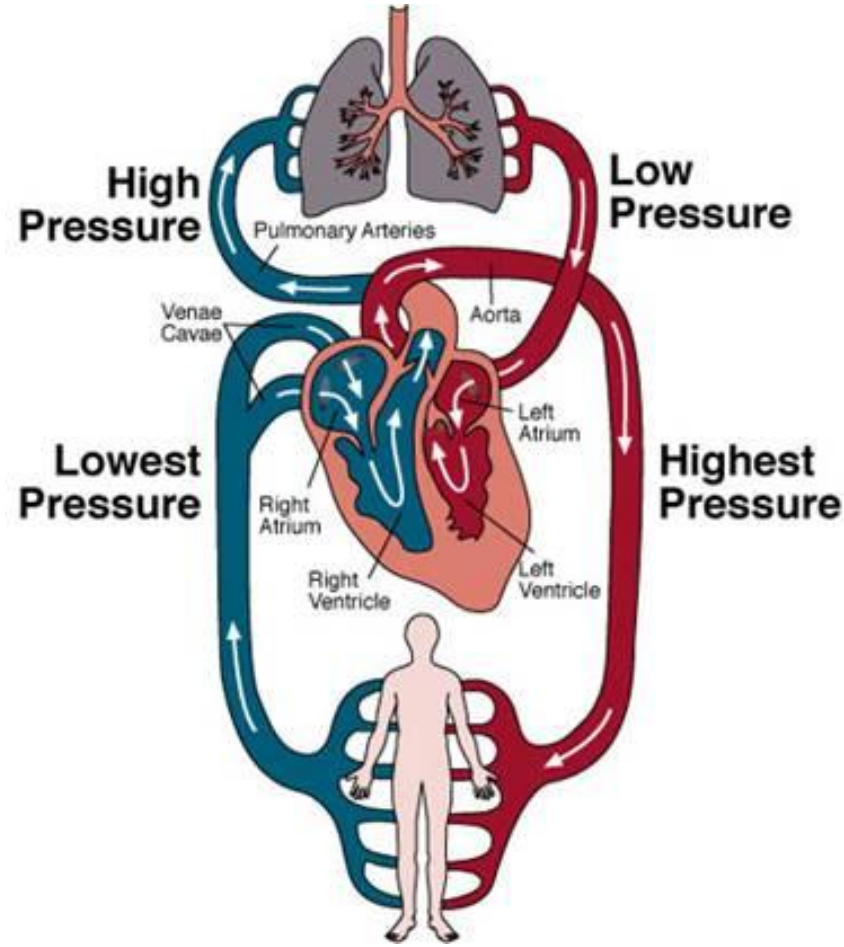




# Heart Structure

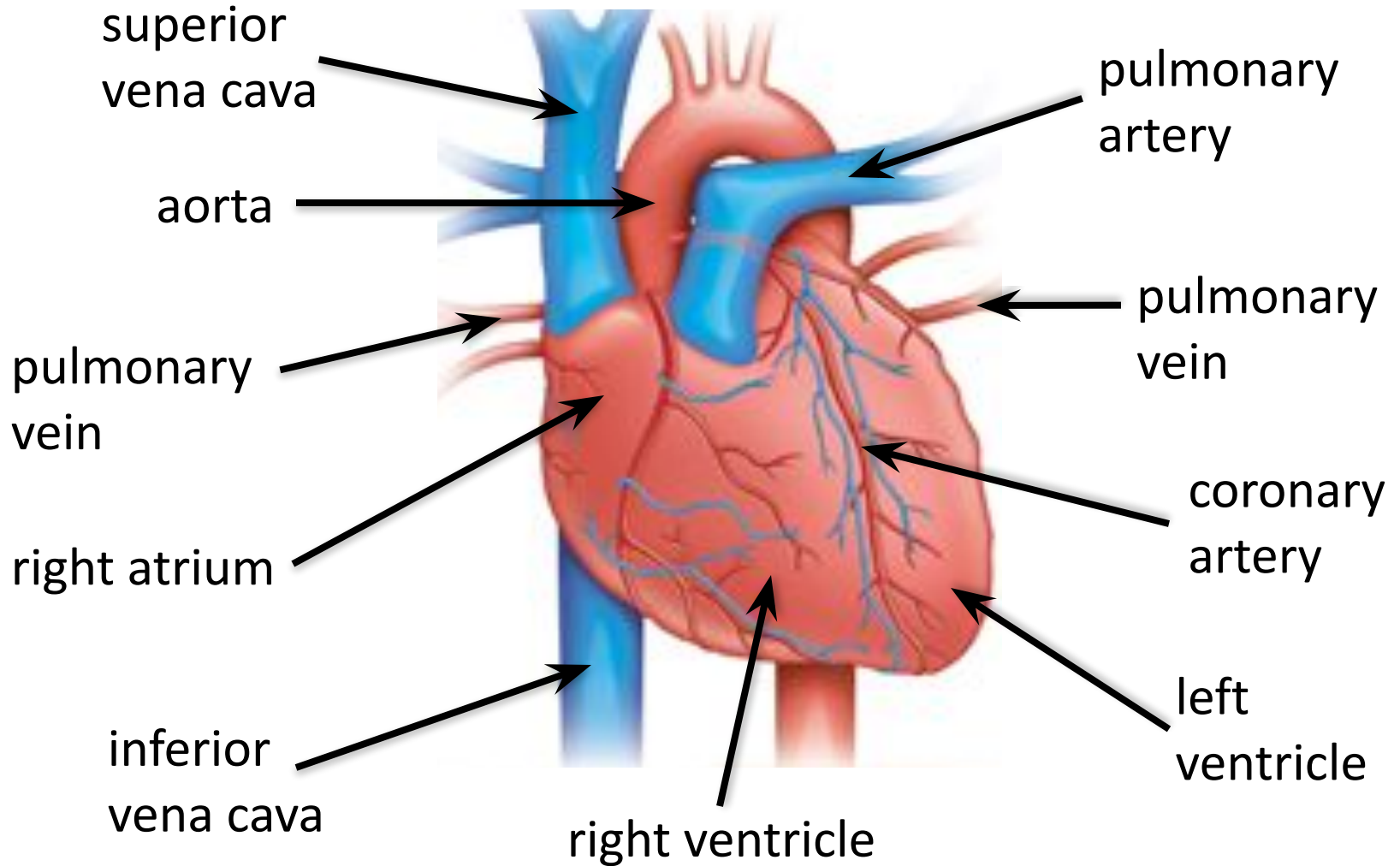
Faiq Bin Zahid

Blood travels through the heart twice before returning to the body



**The double circulatory system**

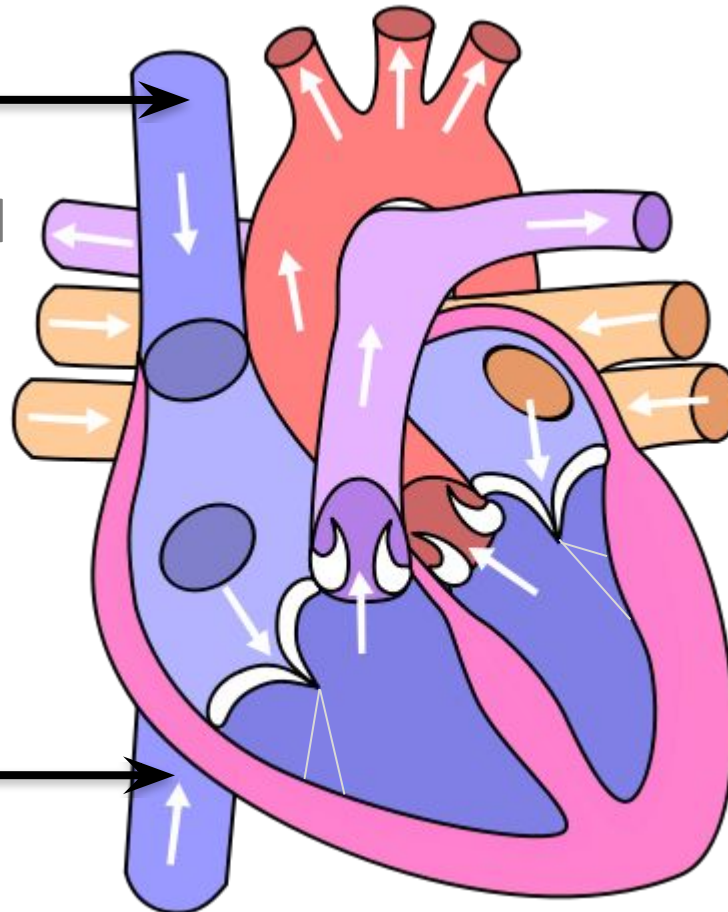
# External view of the heart



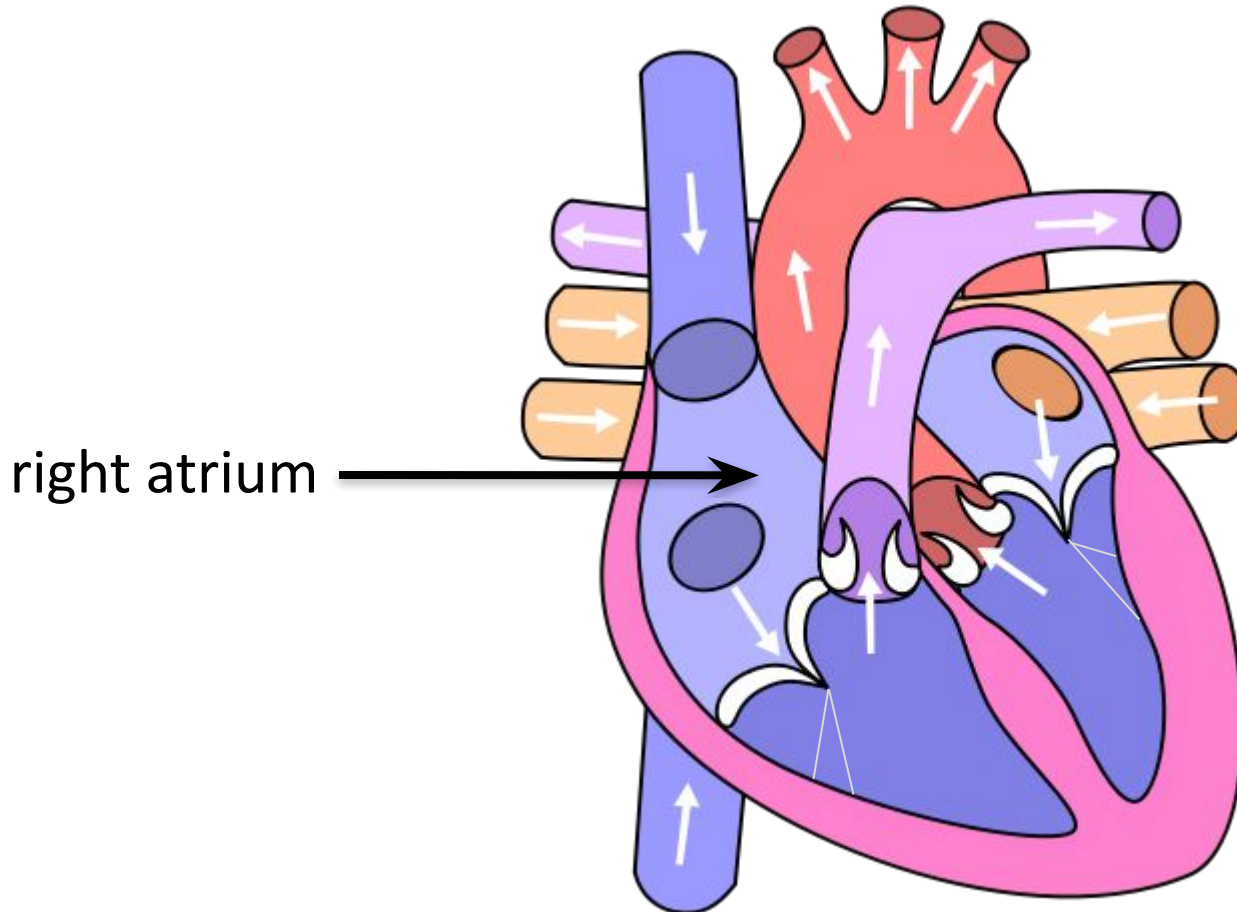
# The vena cava carries deoxygenated blood from the body to the right atrium

superior  
vena cava  
(transports blood  
from the head)

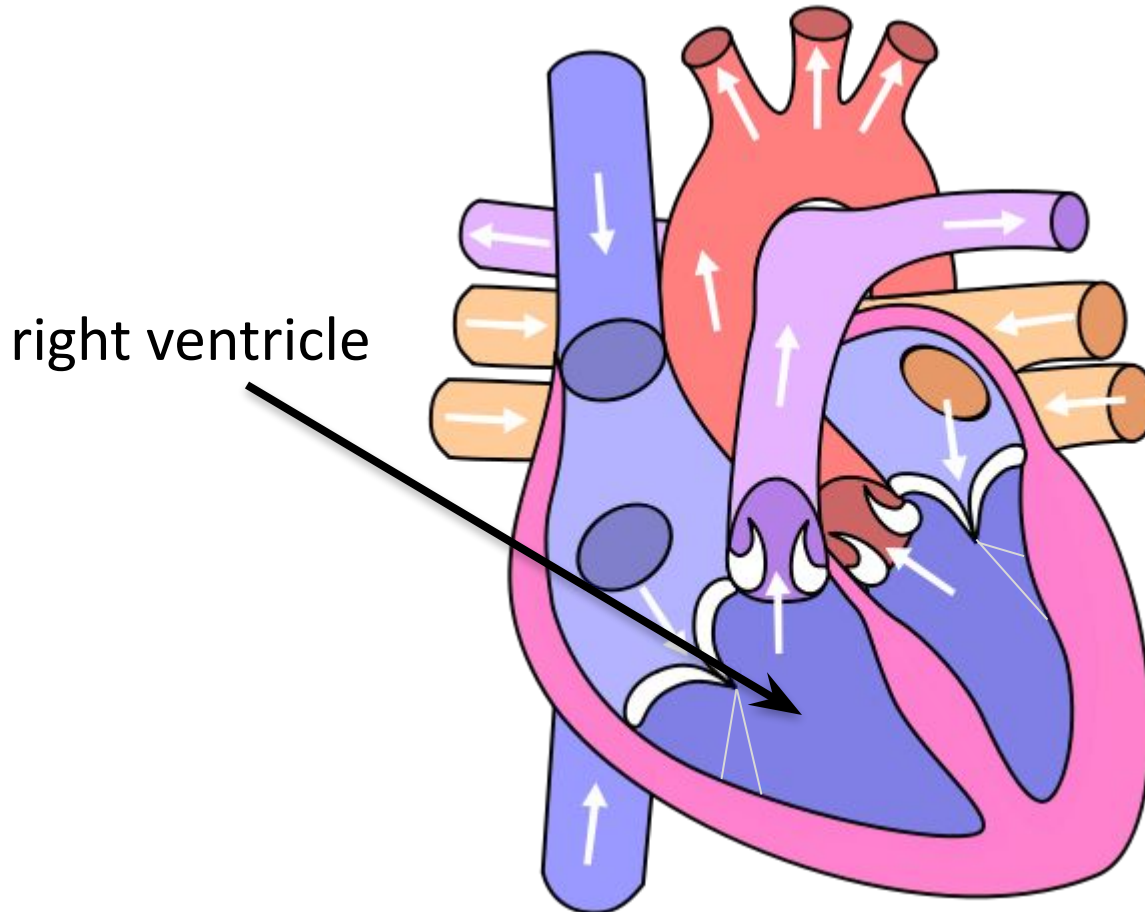
inferior  
vena cava  
(transports blood  
from rest of body)



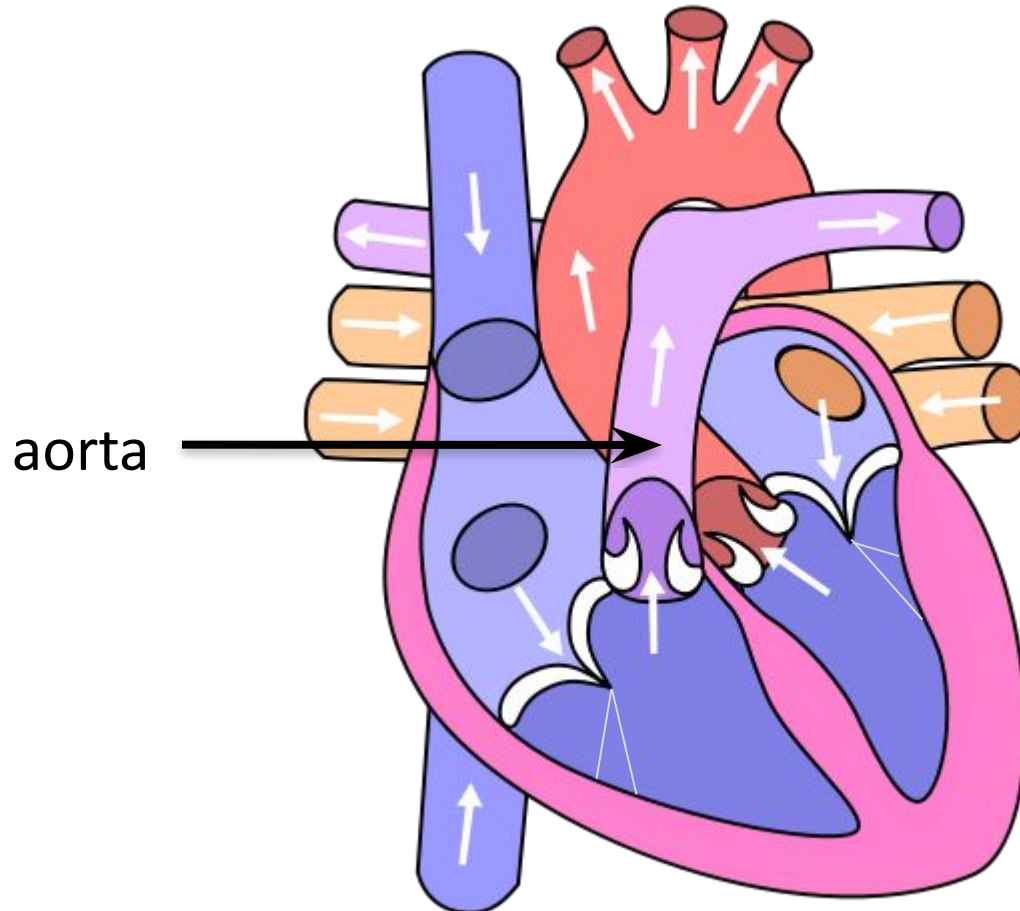
The right atrium collects deoxygenated blood and pumps it to the right ventricle



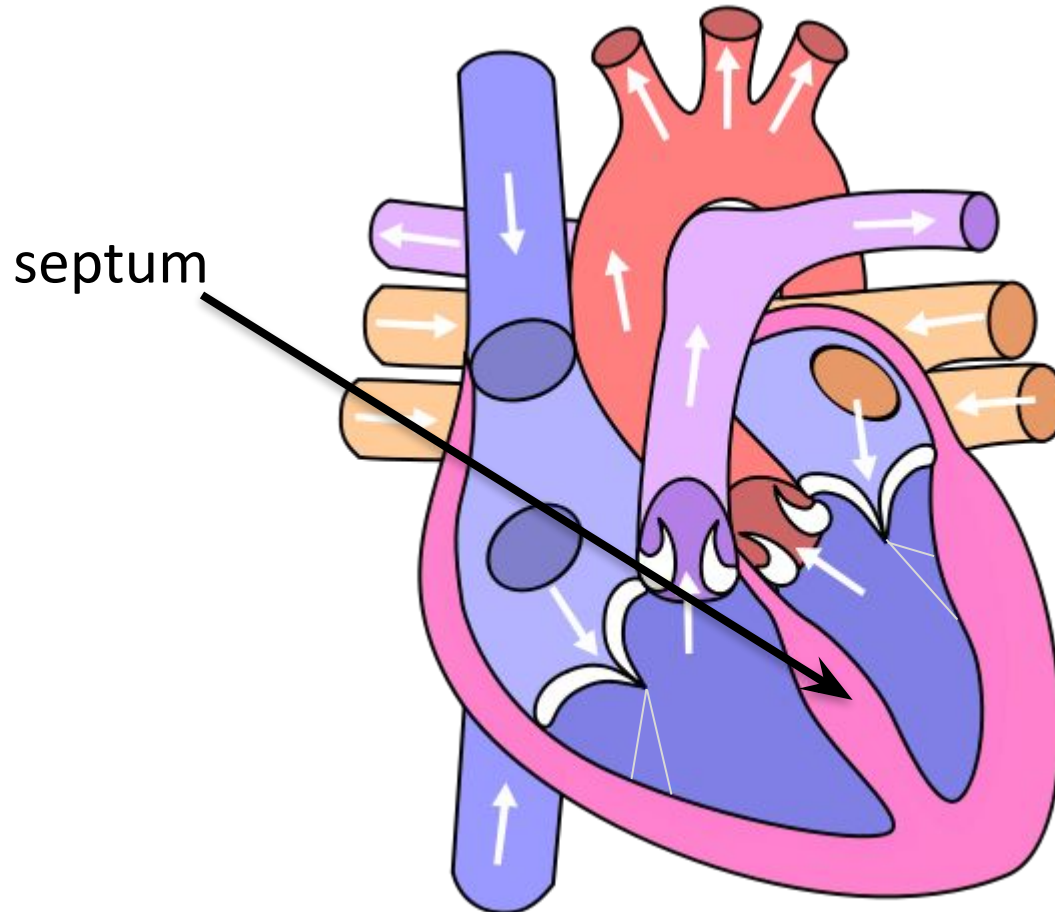
The right ventricle pumps deoxygenated blood to the lungs



The pulmonary artery carries deoxygenated blood from the right ventricle to the lungs

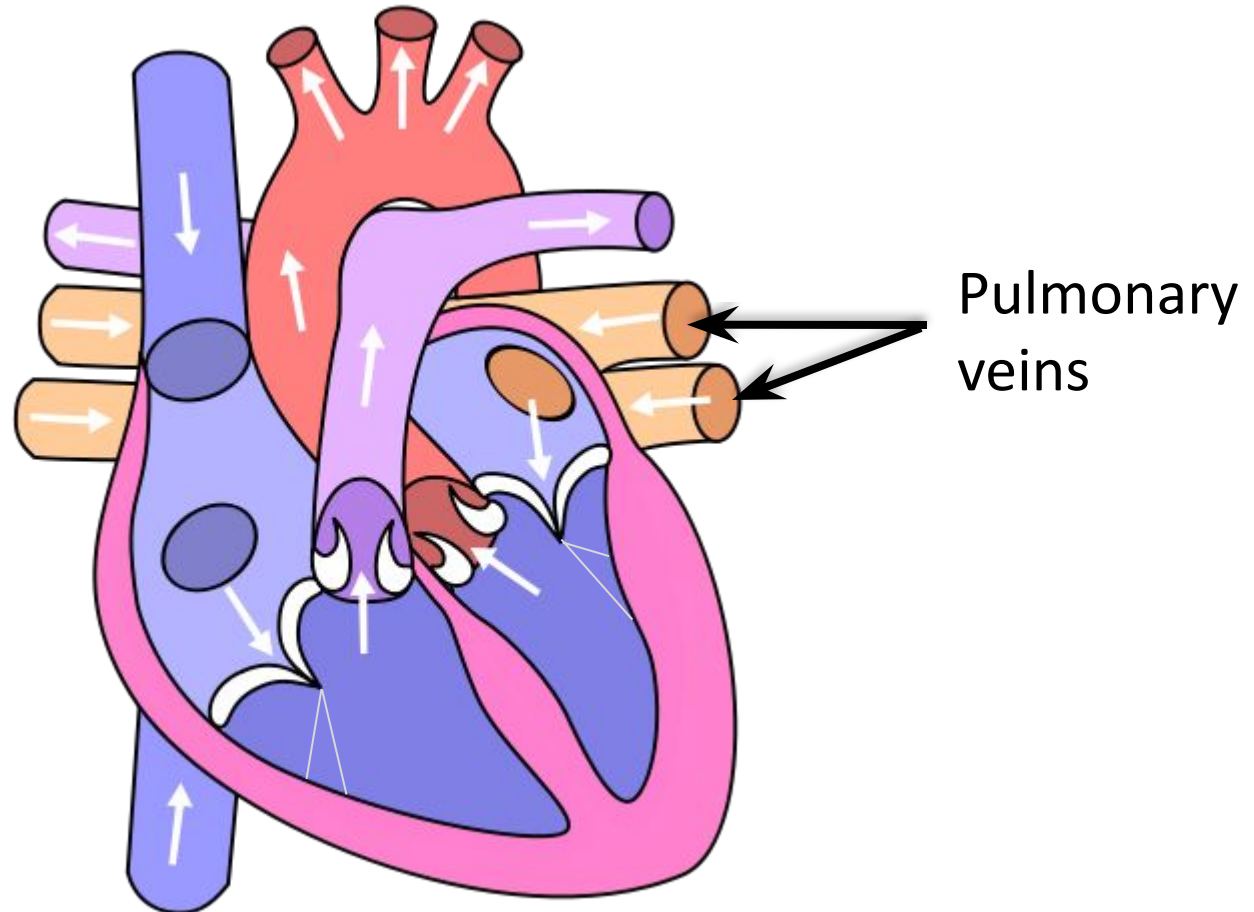


The septum separates the left and right sides of the heart

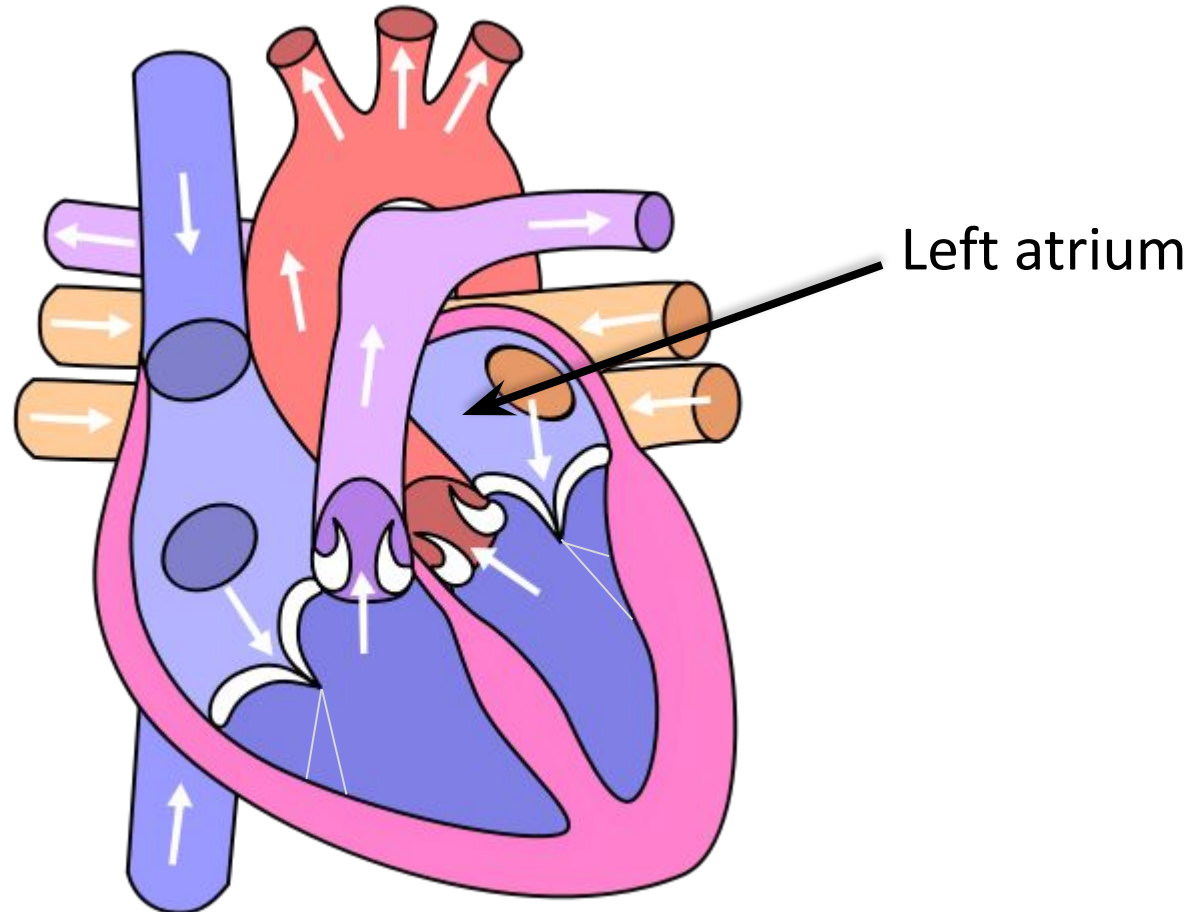




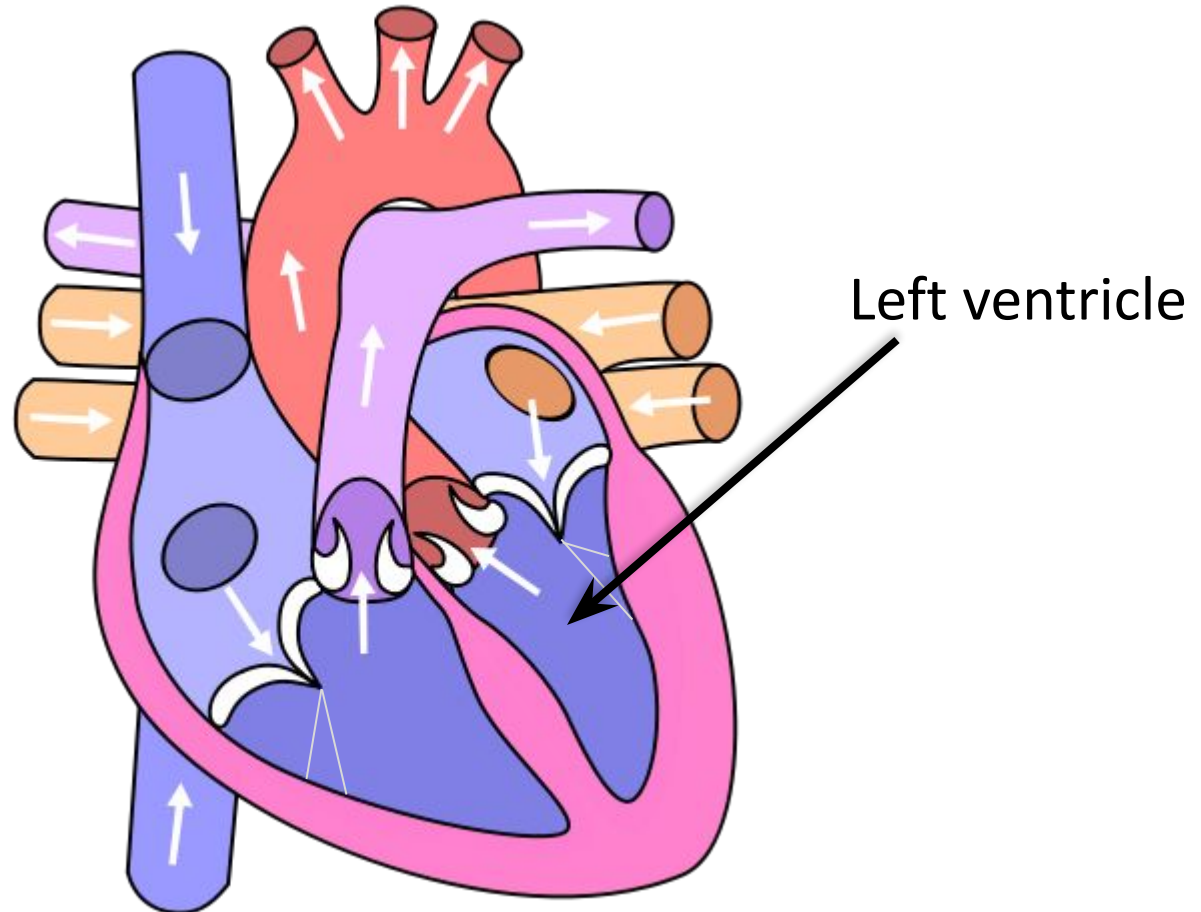
The pulmonary veins carry oxygenated blood from the lungs to the left atrium



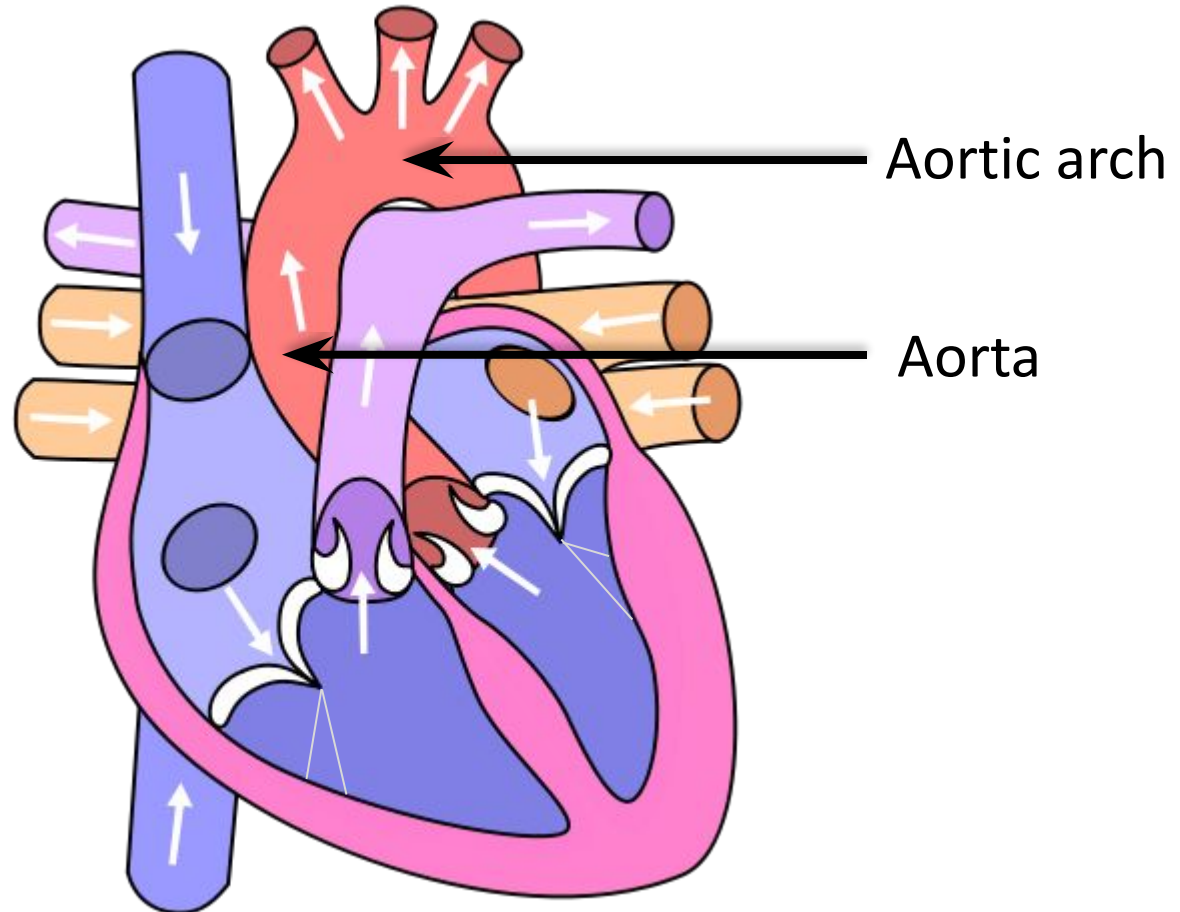
The left atrium collects the oxygenated blood and pumps it to the left ventricle



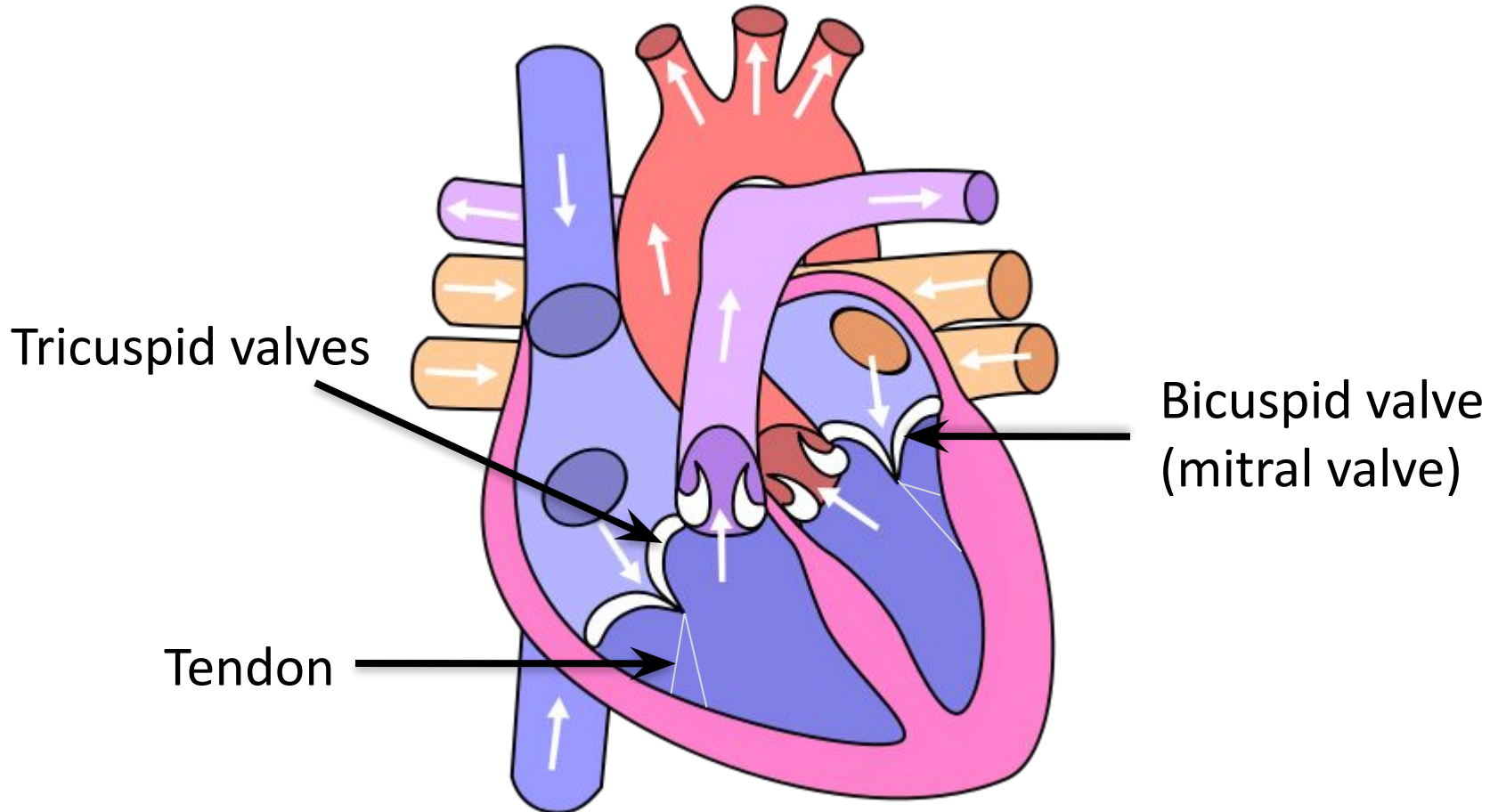
The left ventricle pumps oxygenated blood to the body via the aorta



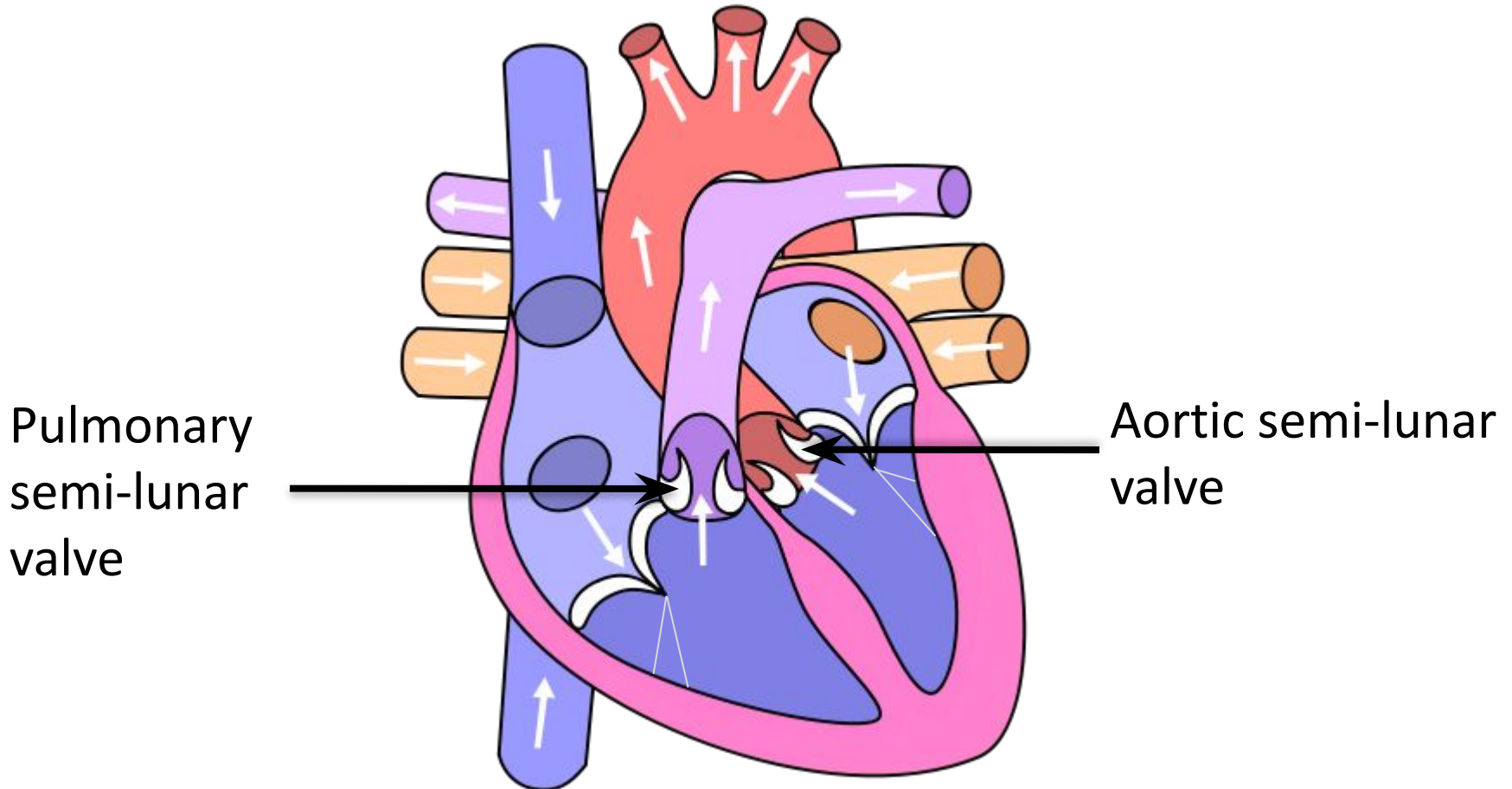
The aorta carries the oxygenated from the left ventricle to the rest of the body



# Atrio-ventricular valves prevent backflow of blood into the atria when ventricles contract

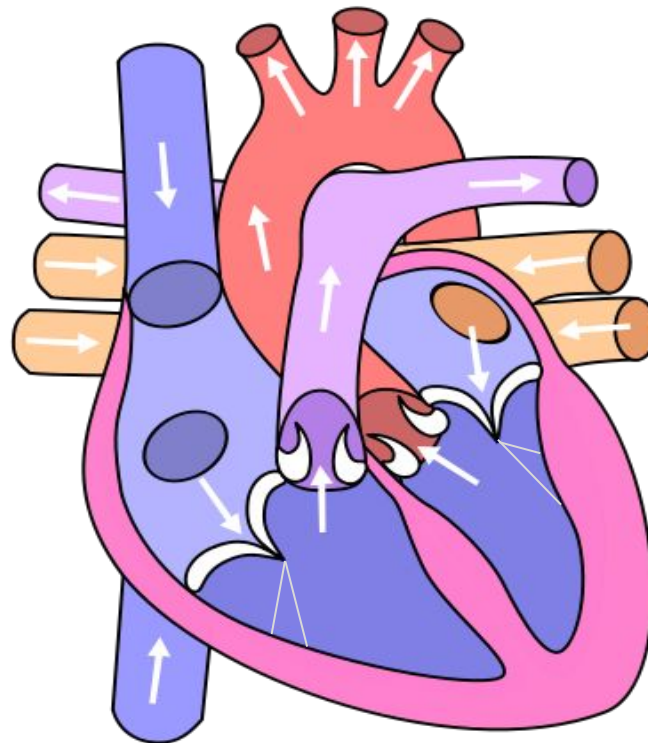


The semi-lunar valves prevent backflow of blood from the arteries into the ventricles

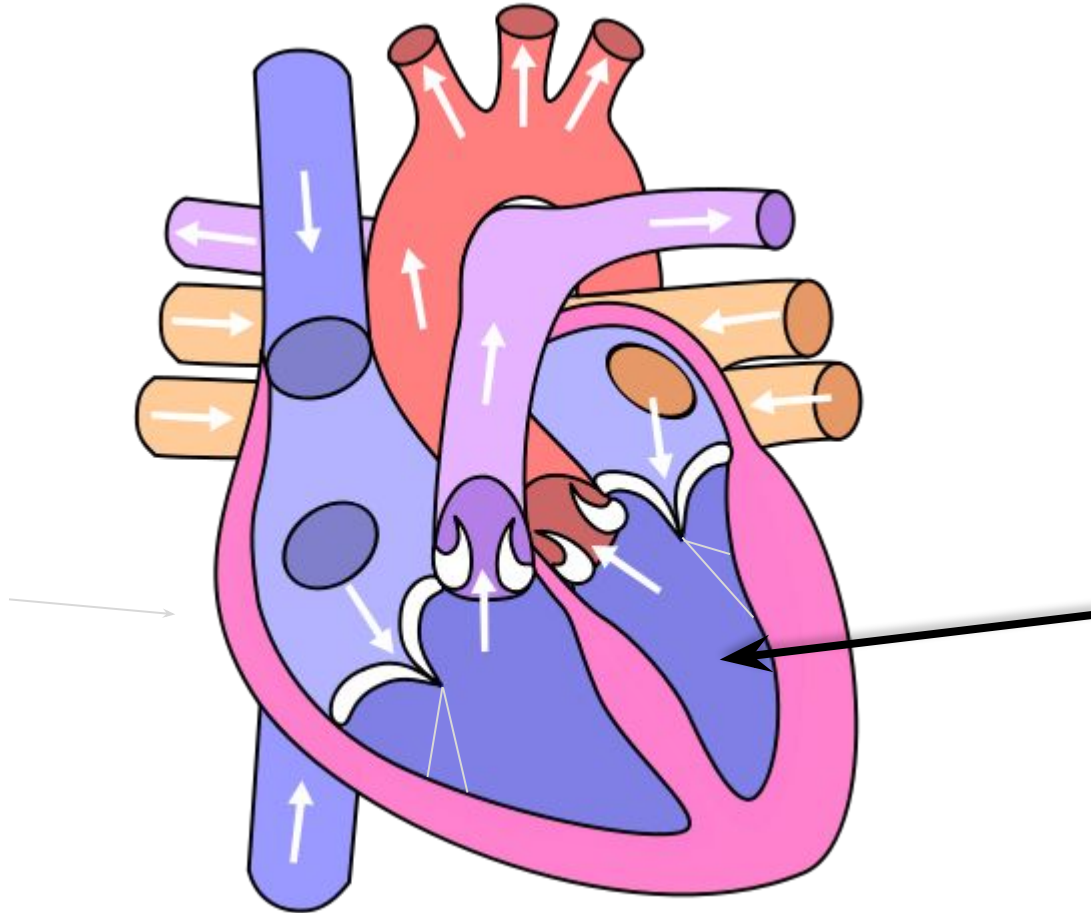


# Summary Quiz

Identify the part of the heart indicated by an arrow .  
There are 10 questions in total.

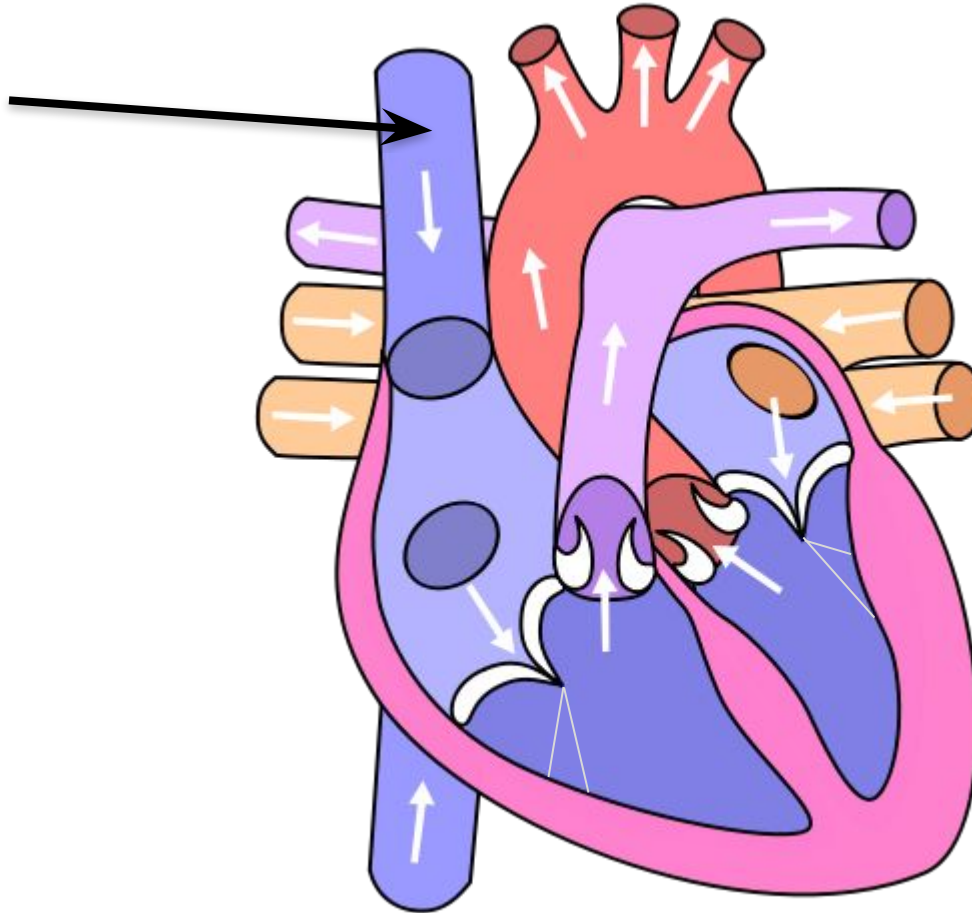


# Question 1

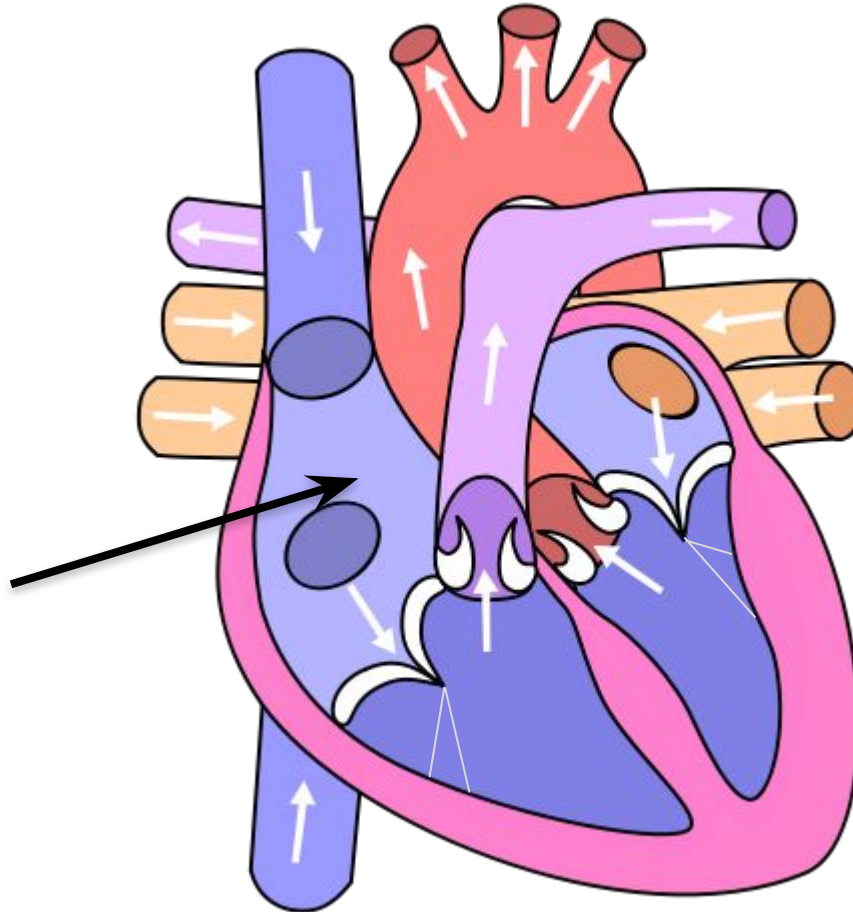




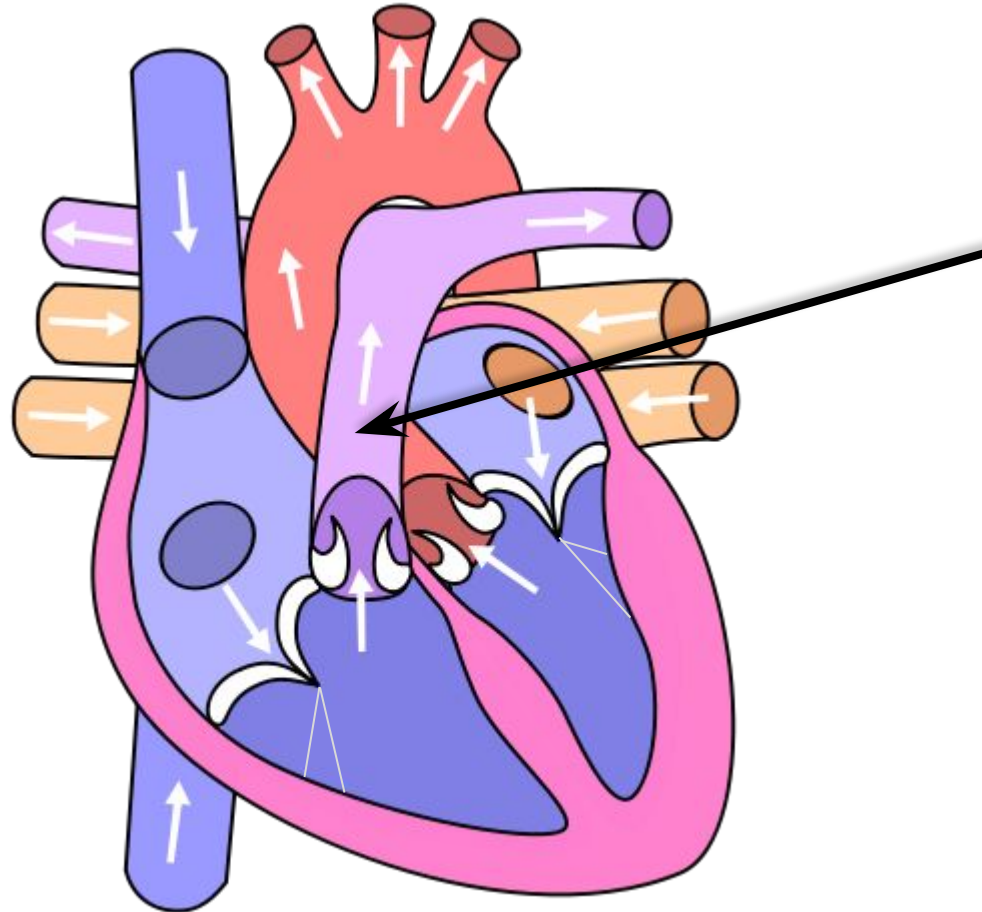
# Question 2



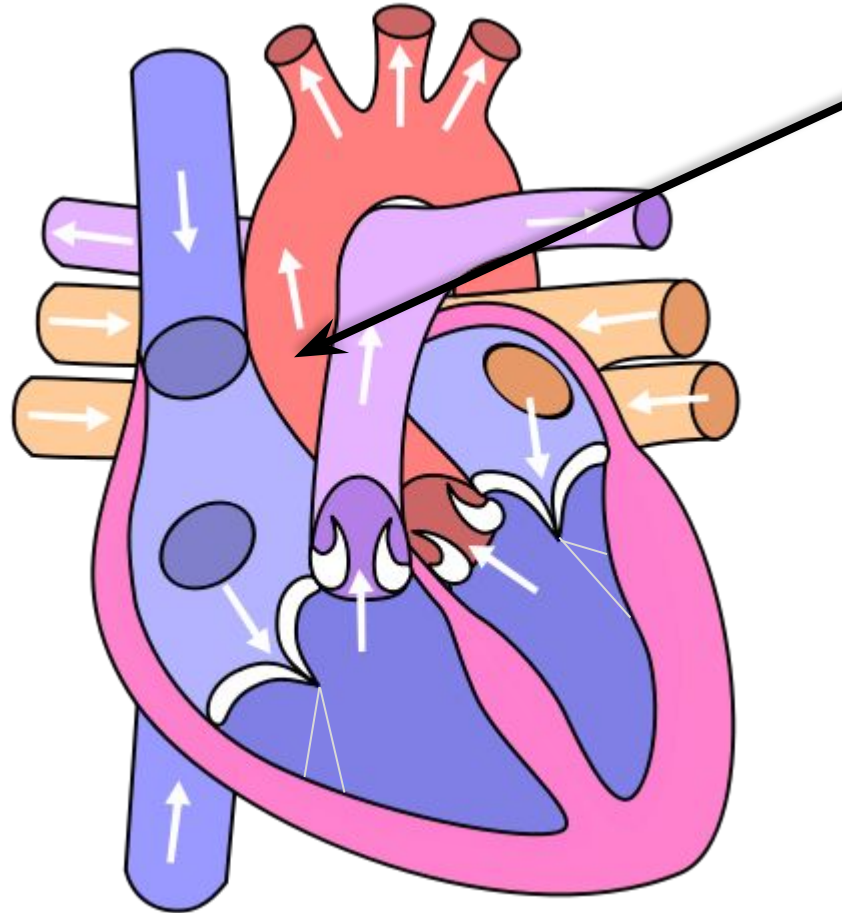
# Question 3



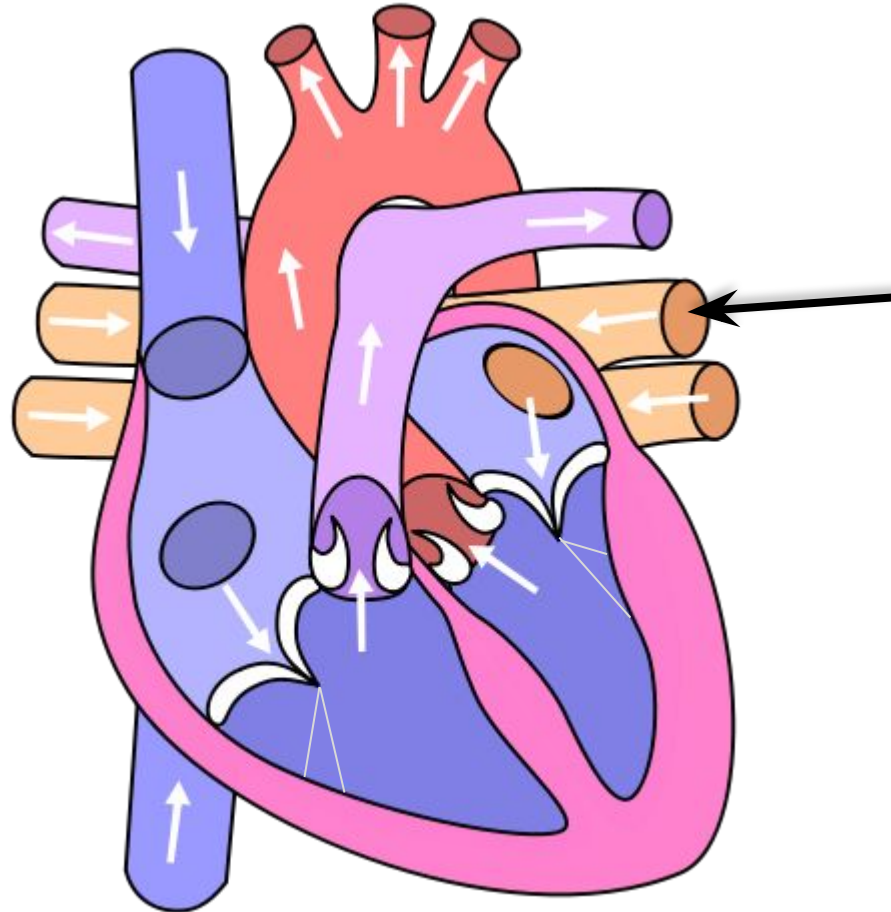
# Question 4



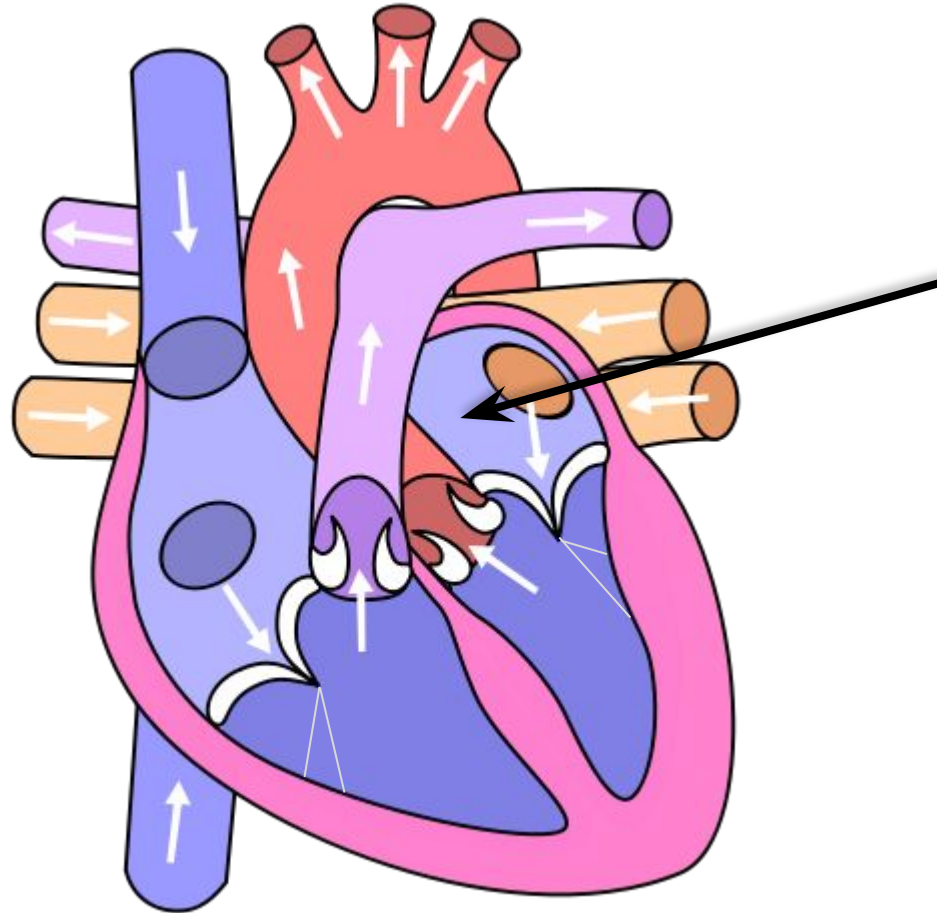
# Question 5



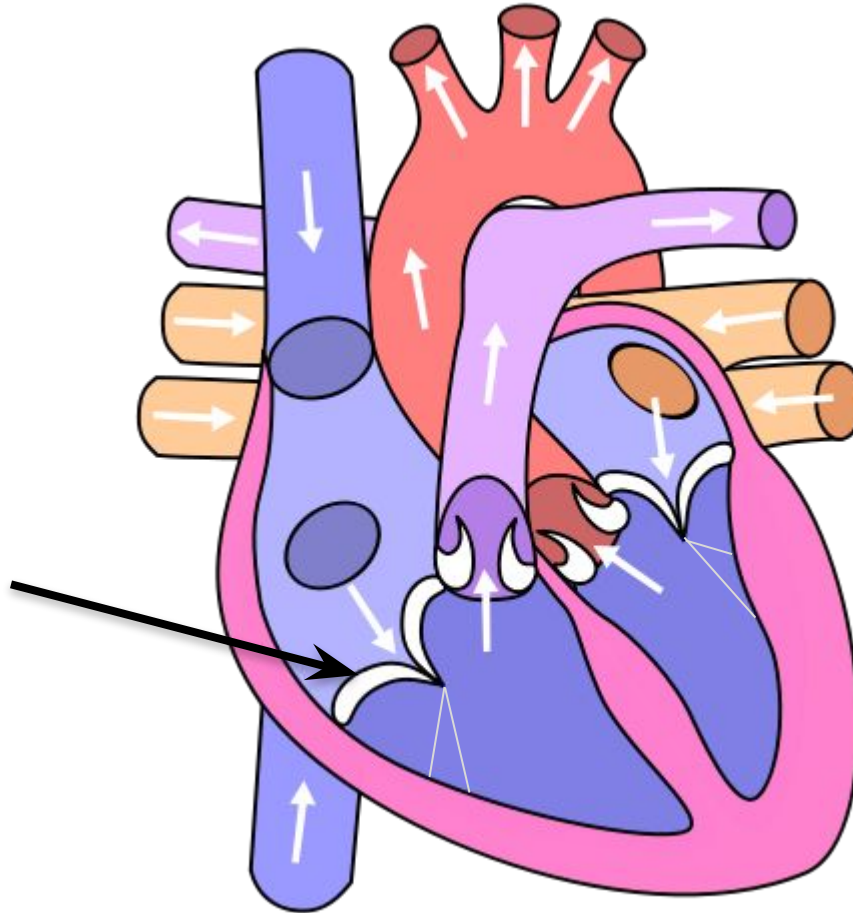
# Question 6



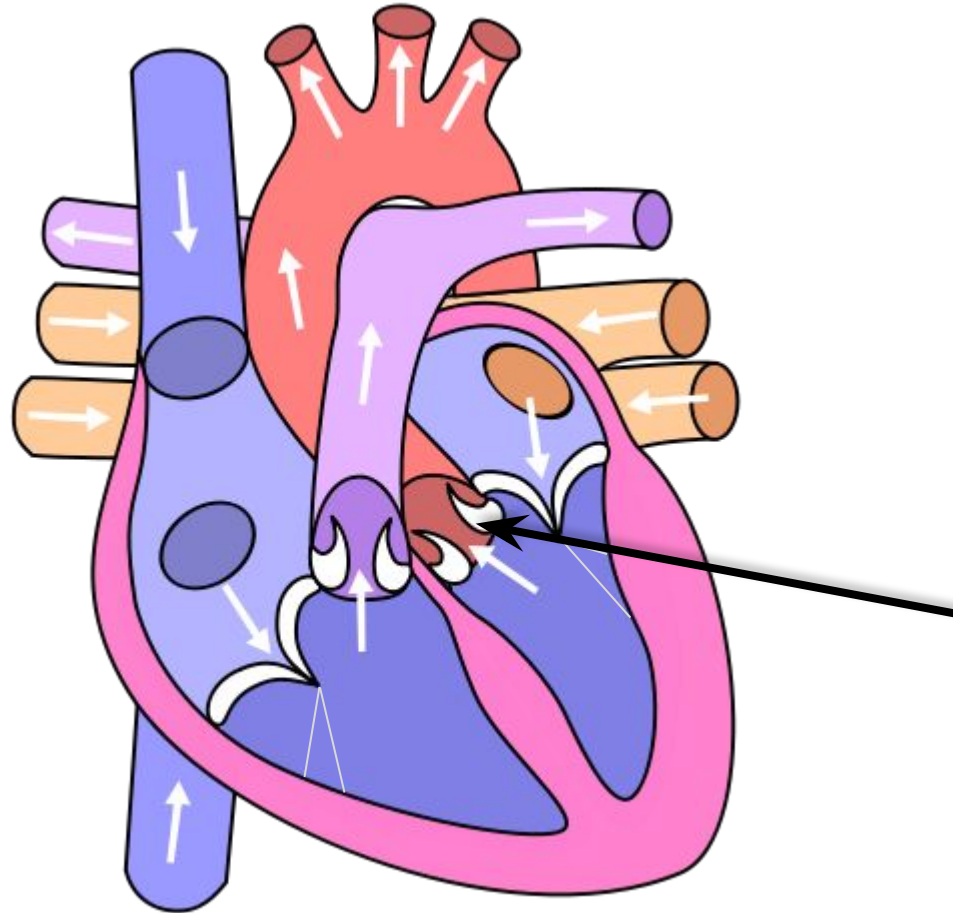
# Question 7



# Question 8

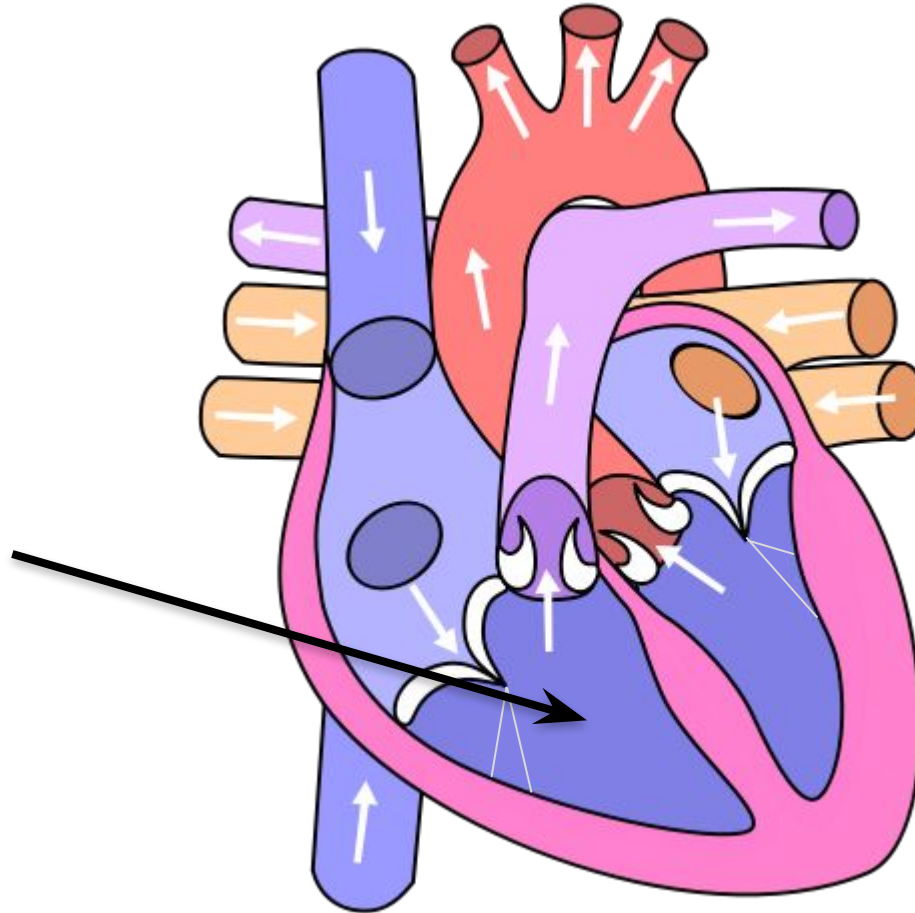


# Question 9



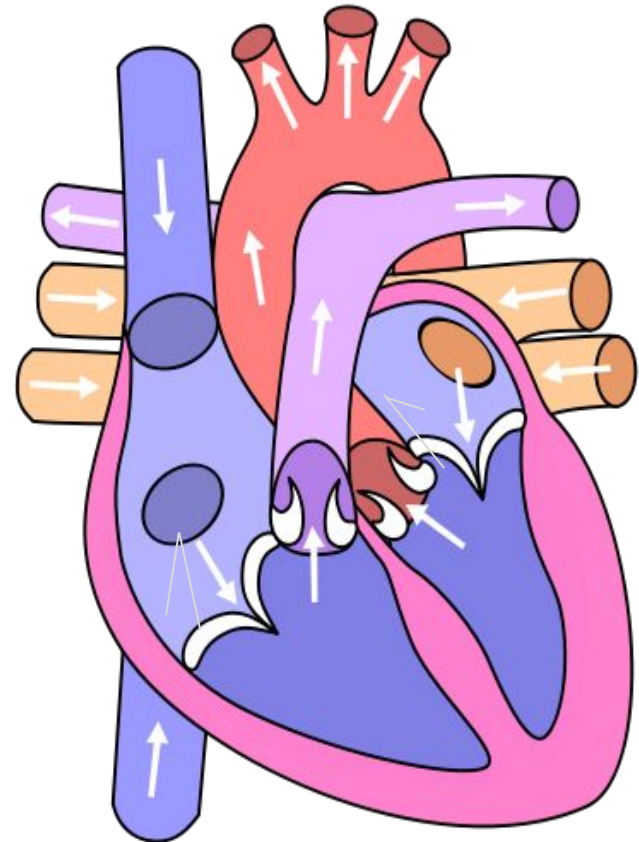


# Question 10



# Answers

- 1 left ventricle
- 2 vena cava
- 3 right atrium
- 4 pulmonary artery
- 5 aorta
- 6 pulmonary vein
- 7 left atrium
- 8 atrio-ventricular (tricuspid) valve
- 9 semi-lunar (aortic) valve
- 10 right ventricle





Finish

Faiq Bin Zahid