



DEPARTMENT OF FOREIGN LANGUAGE

# Human skeleton

Faculty: General medicine

Group: 022-1k

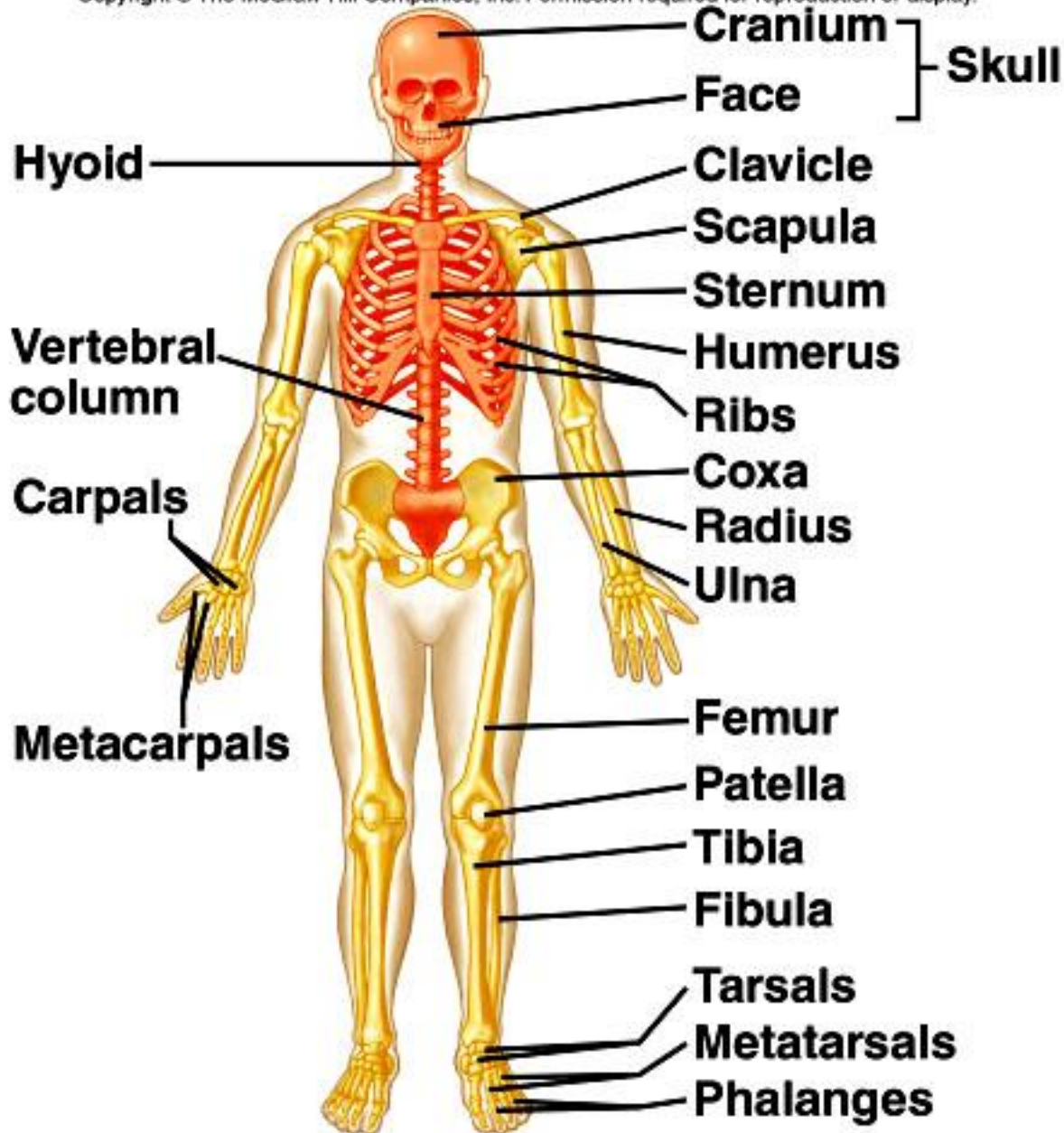
Done by: Kanapiyanova M.

Checked by: Ibragimova A.



*What is the human skeleton?*

*The skeleton (from Greek skeletos "dried up") is the body part that forms the supporting structure of an organism.*



# The Skeletal System

## Parts of the skeletal system:

- *Bones (skeleton)*
- *Joints*
- *Cartilages*
- *Ligaments (bone to bone)(tendon=bone to muscle)*

# Bones of the Human Body

- The skeleton has **206** bones
- Two basic types of bone tissue

## **Compact** bone

- Homogeneous

## **Spongy** bone

- Small needle-like pieces of bone
- Many open spaces

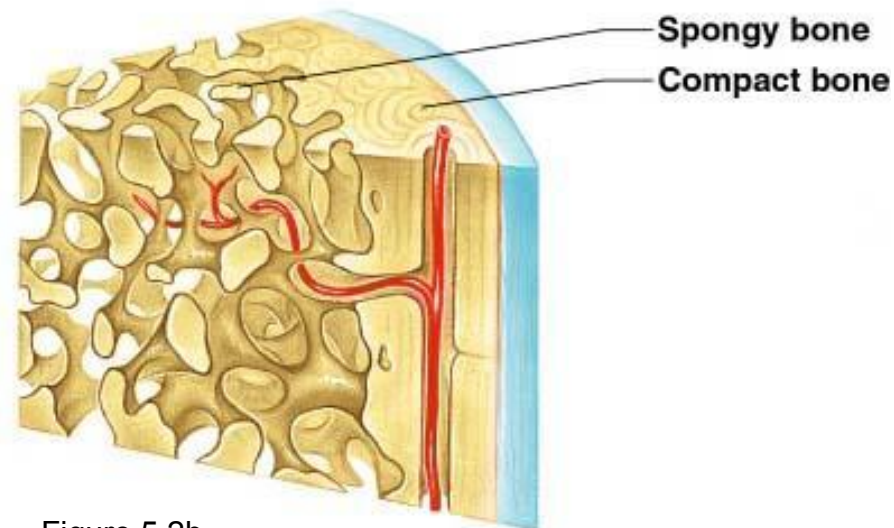

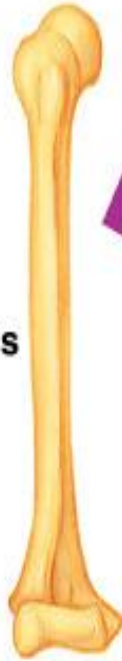


Figure 5.2b

# Bones are classified by their shape:

1. **Long-** bones are longer than they are wide (arms, legs)
  2. **Short-** usually square in shape, cube like (wrist, ankle)
  3. **Flat-** flat , curved (skull, Sternum)
  4. **Irregular-** odd shapes (vertebrae, pelvis)
- 

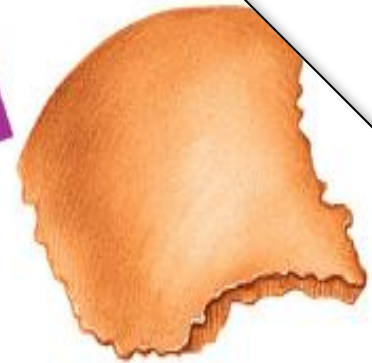
**(a) Long bone**  
(e.g., humerus  
of arm)



**(b) Short bones**  
(e.g., carpals  
of wrist)



**(c) Flat bone**  
(e.g., parietal  
bone of skull)



**(d) Irregular bone**  
(e.g., vertebra)



# The Axial Skeleton

Divided into three parts

- ***Skull***
- ***Vertebral Column***
- ***Rib Cage***



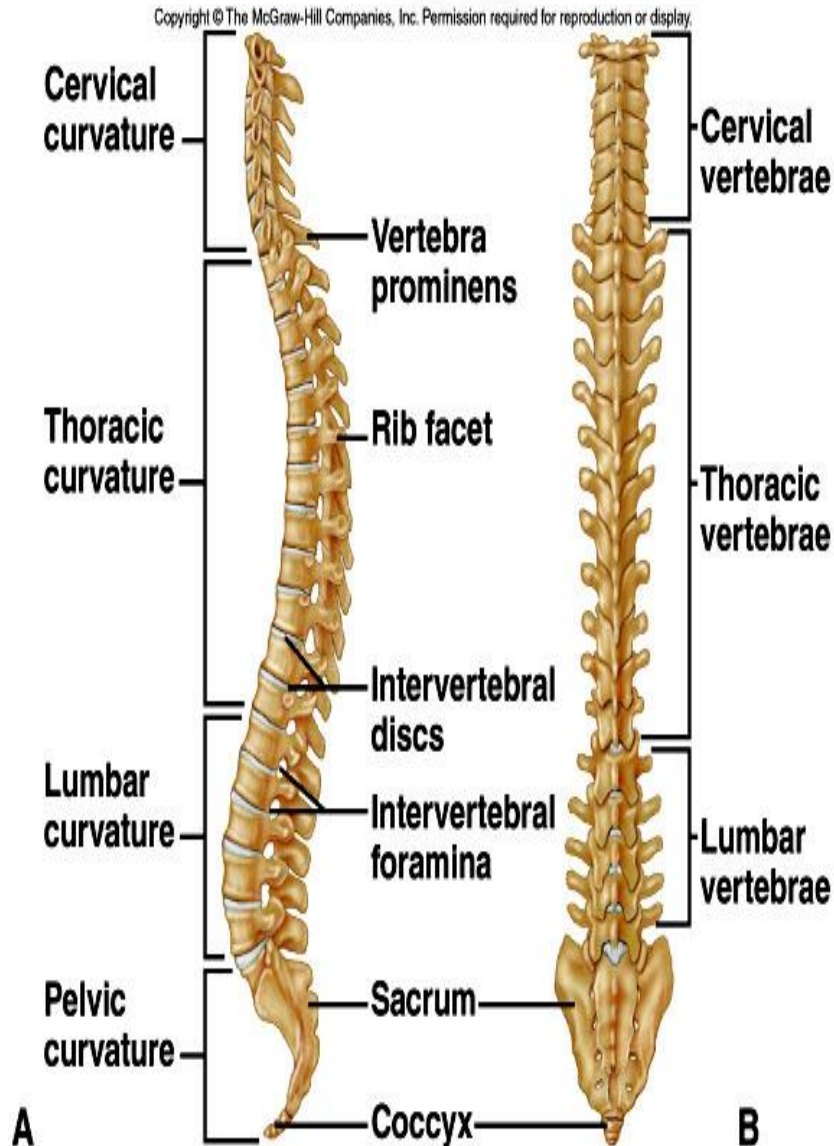


# The Skull



The bones of the skull consist of *cranial* and *facial* parts. There are 26 bones in the skull.

# The Vertebral Column

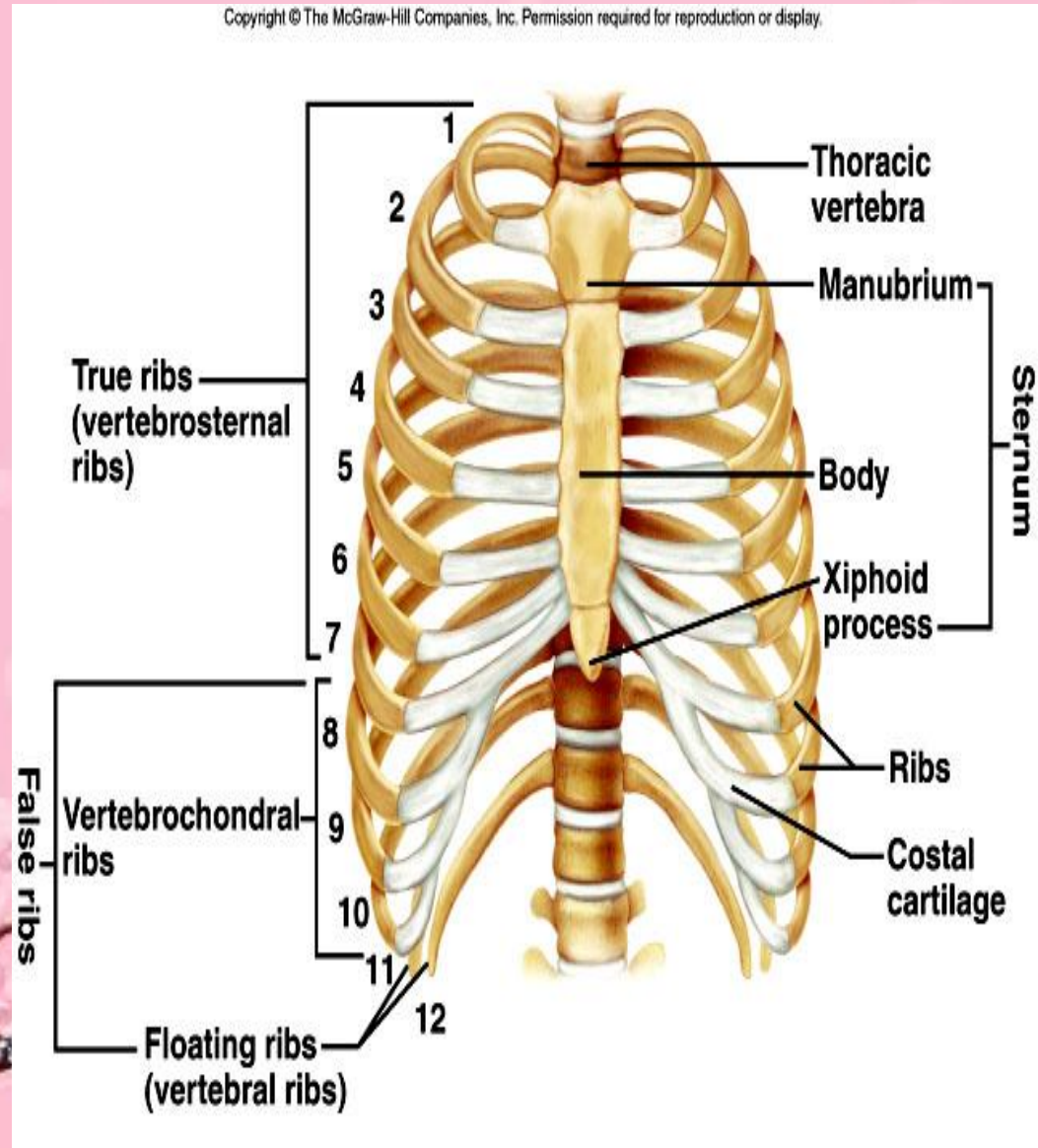


In the spinal column there are 7 cervical vertebrae, 12 thoracic vertebrae, 5 lumbar, 5 sacral vertebrae and 4-5 coccyx

There are 32 or 34 vertebrae in the

# The Ribs

- True ribs are directly attached to the sternum (first seven pairs)
- Three false ribs are joined to the 7<sup>th</sup> rib





**THANK YOU FOR  
YOUR  
ATTENTION**