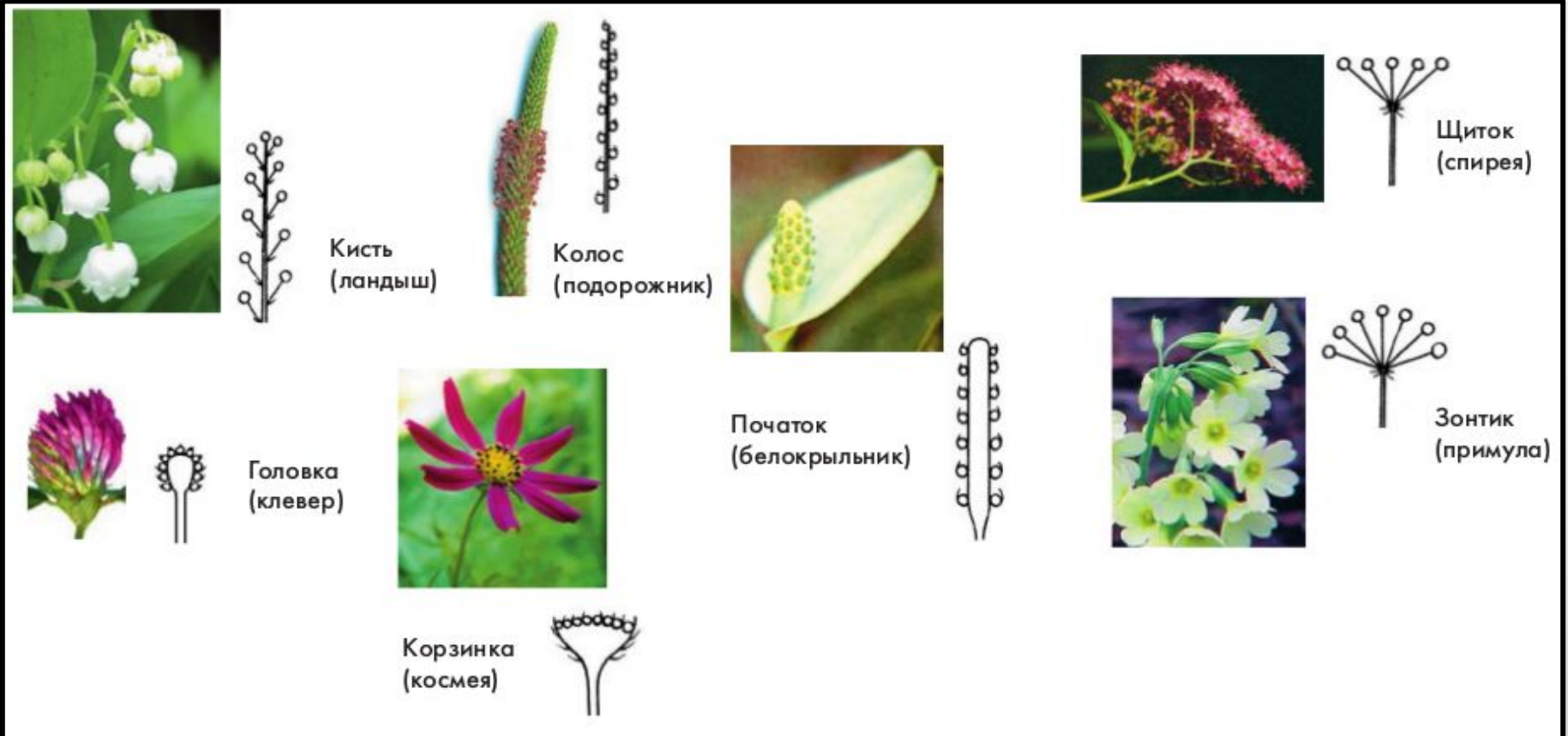


# Inflorescence

Wrote: Zhunuspaeva Aisana BM13  
Checked: Korogod N.P.

**The inflorescence** is a year long shoot of a plant, which grows a group of flowers.



Called **simple**  
**inflorescence** in  
which all  
flowers are  
located only on  
the major axis.



**Raceme** in this inflorescence, the individual flowers are arranged one after another along the well-marked peduncle, extending from the long axis.



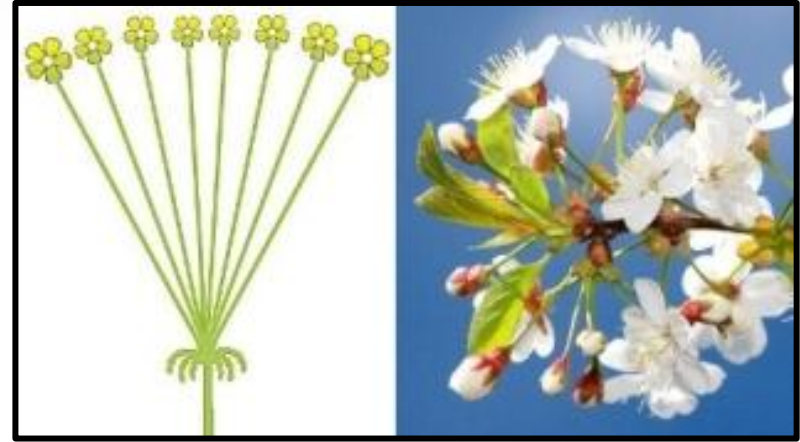
**Simple spike** form do not have stalks (i.e. sessile) flowers arranged on a common axis of inflorescence, as plantain.



**The cob** is different from spike thick, typically fleshy rachis.



**Simple umbrella** - the inflorescence in which pedicels emerge from the top of the axis of the inflorescence. This inflorescence are primrose, cherry.



**Head** in the inflorescence usually of numerous small sessile flowers, situated on oelstrom and enlarged the bed of the inflorescence.



The compound inflorescence is an axis to which are attached the simple inflorescences.



**Panicle (a compound brush)** — formed the main axis, to which are attached simple brush (grape, lilac), or simple spikes (rice, millet, oats )





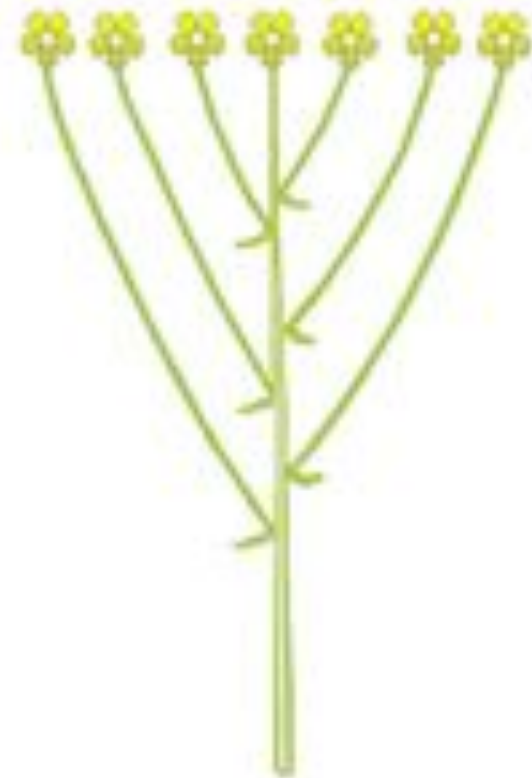
**Compound umbel** — an inflorescence in which the apex of the main axis, like the spokes of an umbrella, depart ordinary umbels (dill, parsley, carrots).



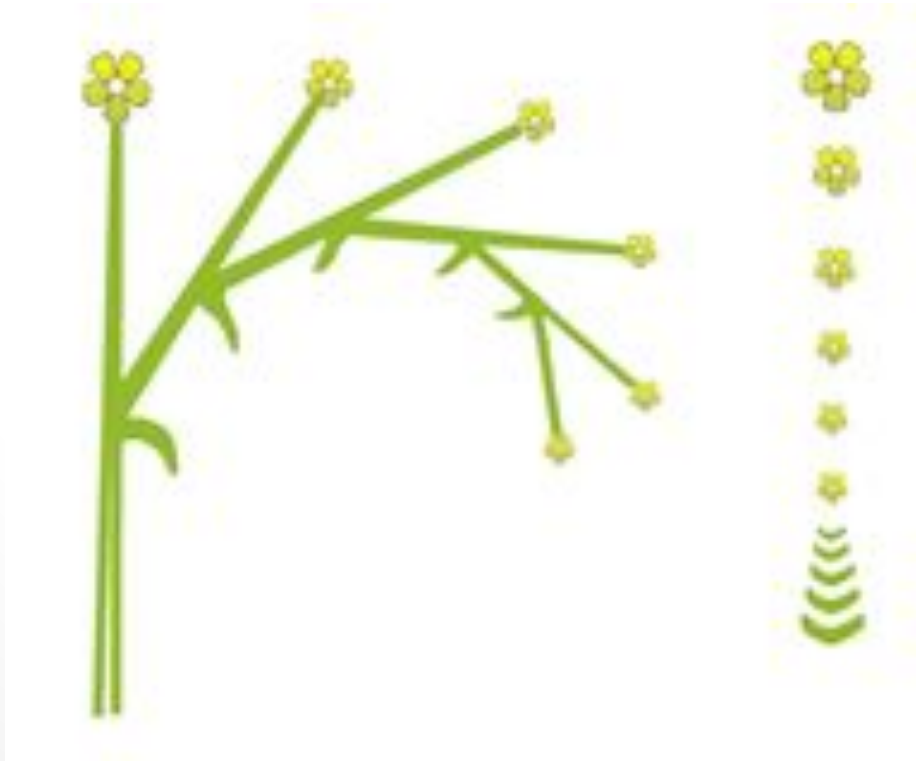
**Compound spike** — an inflorescence where the main axis of the depart simple spikes (wheat, rye and other cereals)



**Compound corymb** is constituted by a set of simple corymbs (mountain ash) or plain baskets (tansy) extending from one major axis.



**Curl** — the inflorescence in which main axis with a single flower, leaves another axis, also with a single flower, etc.(flax, forget-me-not, comfrey)



<b>Inflorescence</b>	<b>Соцветие</b>	<b>Гүлшоғыр</b>
Simple inflorescence	Простое соцветие	Жай гүлшоғыр
Compound inflorescence	Сложное соцветие	Күрделі гүлшоғыр
Simple spike	Простой колос	Жай масақ
Simple umbrella	Простой зонтик	Жай шатыргүл
Head	Корзинка	Себет
Panicle	Метелка	Сыпыртқы
Compound umbel	Сложный зонтик	Күрделі шатыршагүл
Compound spike	Сложный колос	Күрделі масақ
Compound corymb	Сложный щиток	Күрделі қалқанша
Curl	Завиток	Шармауық

Thank you for your attention!