

Sınıf

CEPHALOPODA

Kafadan bacaklılar



Filum MOLLUSCA

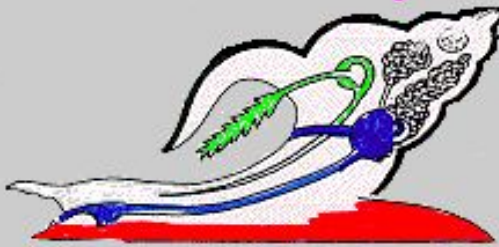
Sınıf CEPHALOPODA



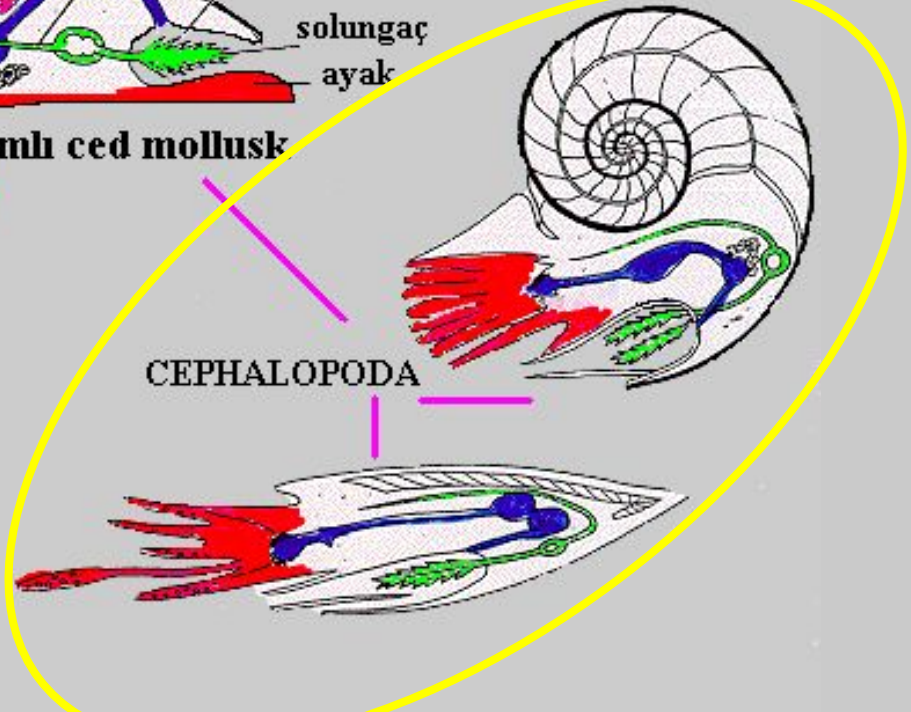
BIVALVIA



varsayımı mollusk



GASTROPODA



CEPHALOPODA

Sınıf CEPHALOPODA

Altsınıf **NAUTILOIDEA** **Kambriyen-Güncel**
“nautiloidler” güncel örnek: ***Nautilus***

Altsınıf **AMMONOIDEA** **Devoniyen-Kretase**
“ammonoidler” nesli tükenmiş

Altsınıf **COLEOIDEA** **Karbonifer-Güncel**
“koleoidler” güncel örnek: ahtopod
mürekkep balığı

Sınıf CEPHALOPODA

Altsınıf **COLEOIDEA** **Karbonifer-Güncel**
“koleoidler”

GÜNCEL KOLEOİD örnekleri

Cins *Sepia*

Cins *Spirula*

Cins *Argonauta*

NESLİ TÜKENMİŞ KOLEOİD örnekleri

belemnitler

Cins *Ausseites*

Cins *Belemnitella*

Cins *Aulacoceras*

Cins *Hibolites*

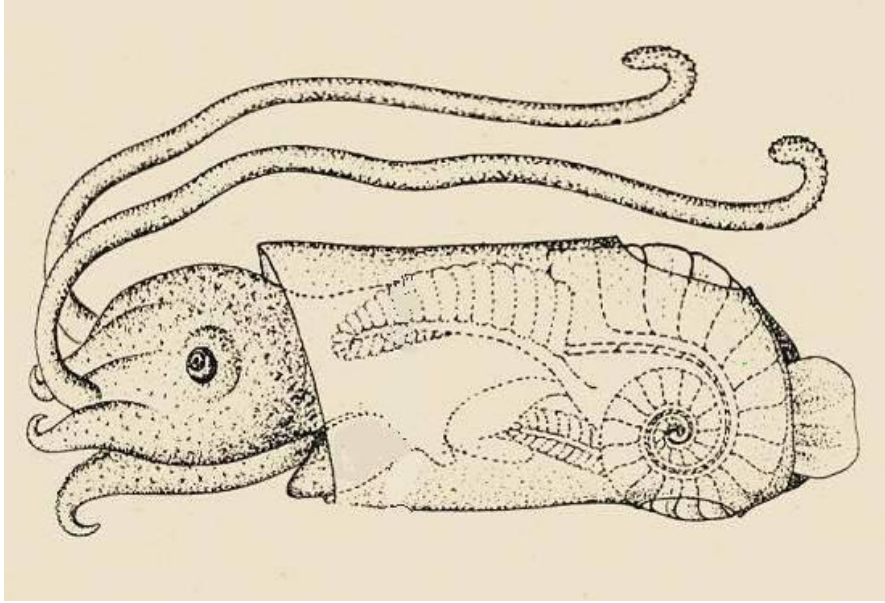
GÜNCEL KOLEOİD örnekleri

Cins *Sepia*



GÜNCEL KOLEOİD örnekleri

Cins *Spirula*



35



40

A

B

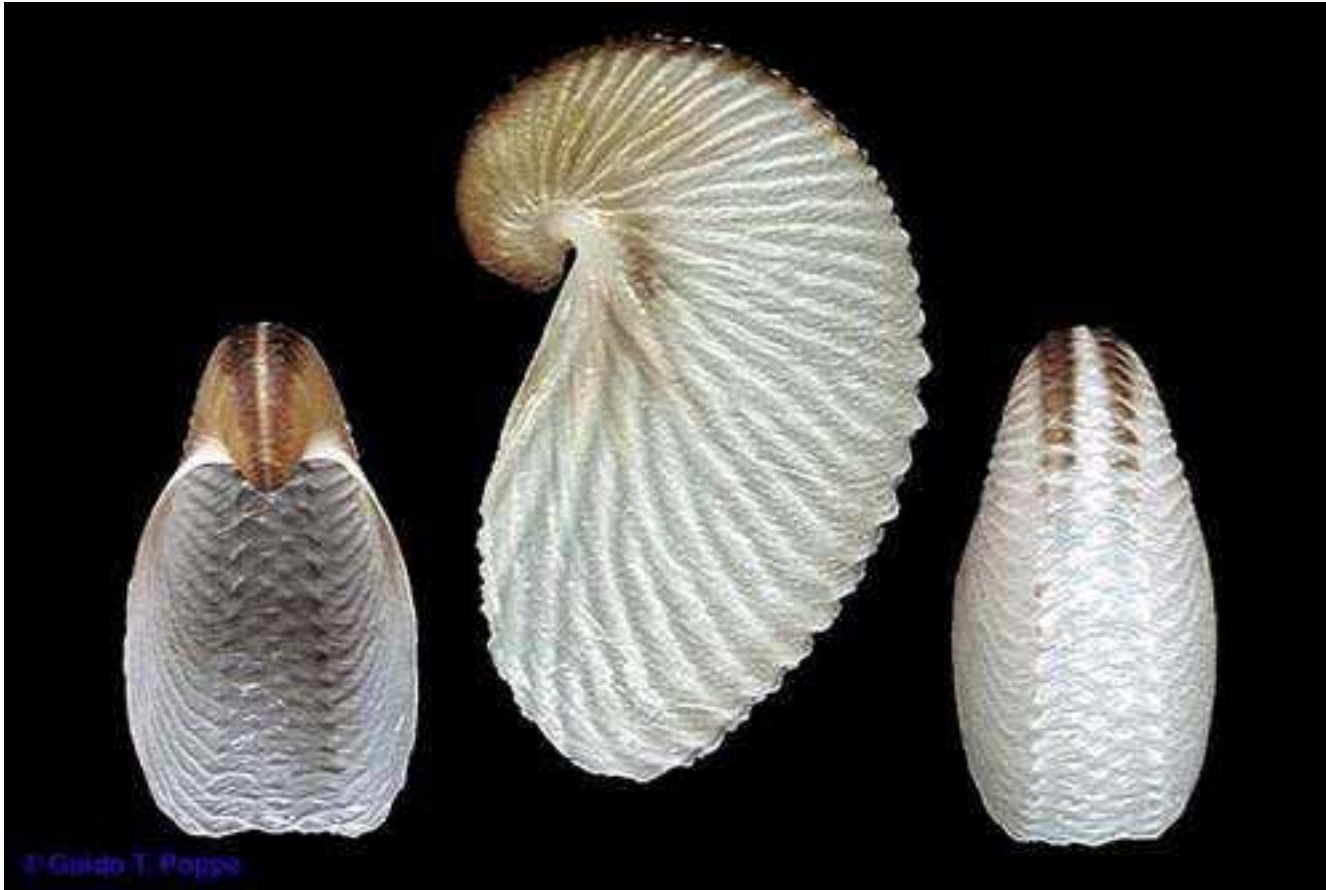
C

Cins *Argonauta*

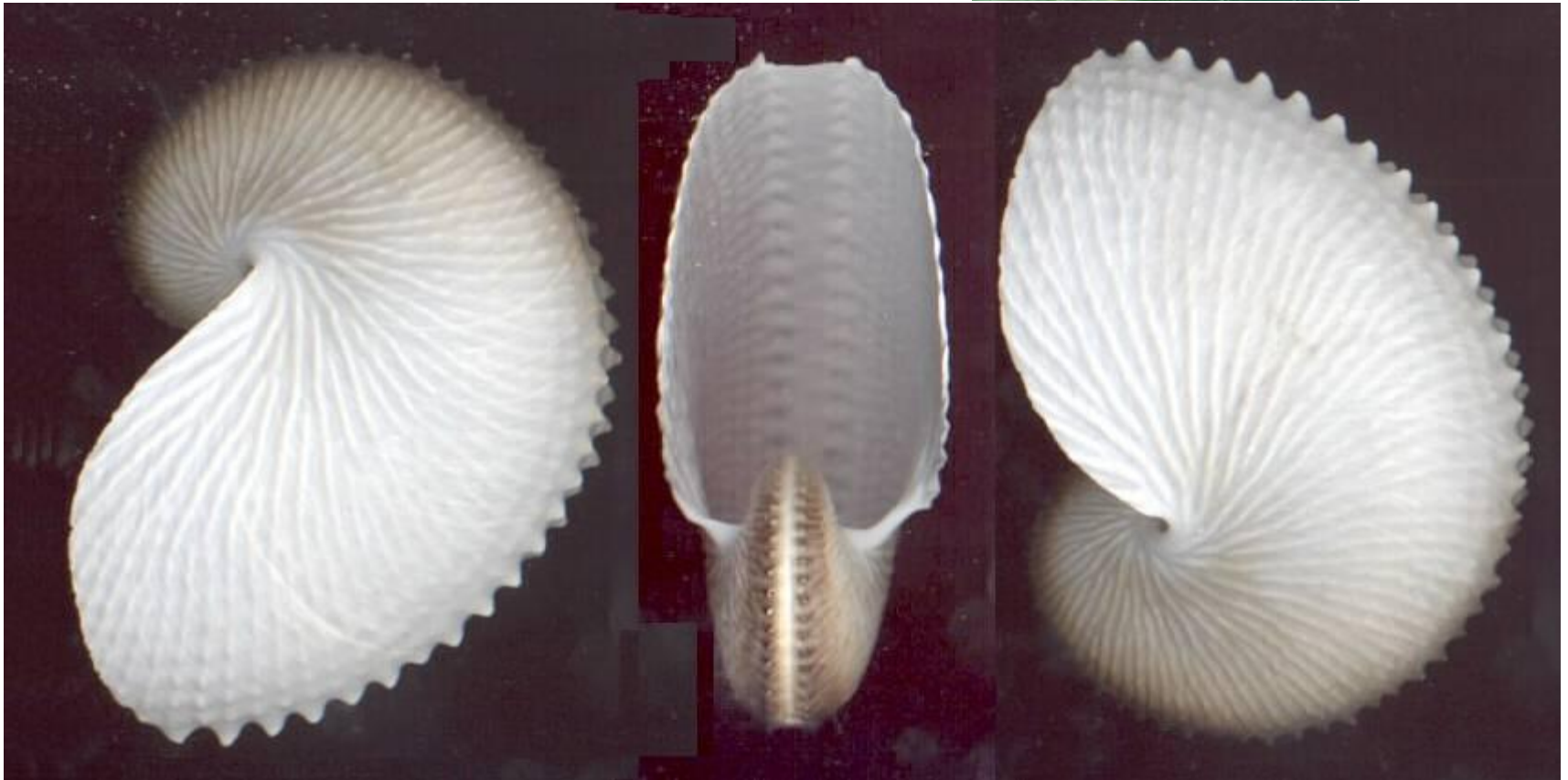
GÜNCEL KOLEOİD örnekleri



Cins *Argonauta*



Cins *Argonauta*



Sınıf CEPHALOPODA

Altsınıf **COLEOIDEA** “koleoidler”

NESLİ TÜKENMİŞ KOLEOİD örnekleri

Belemnitler

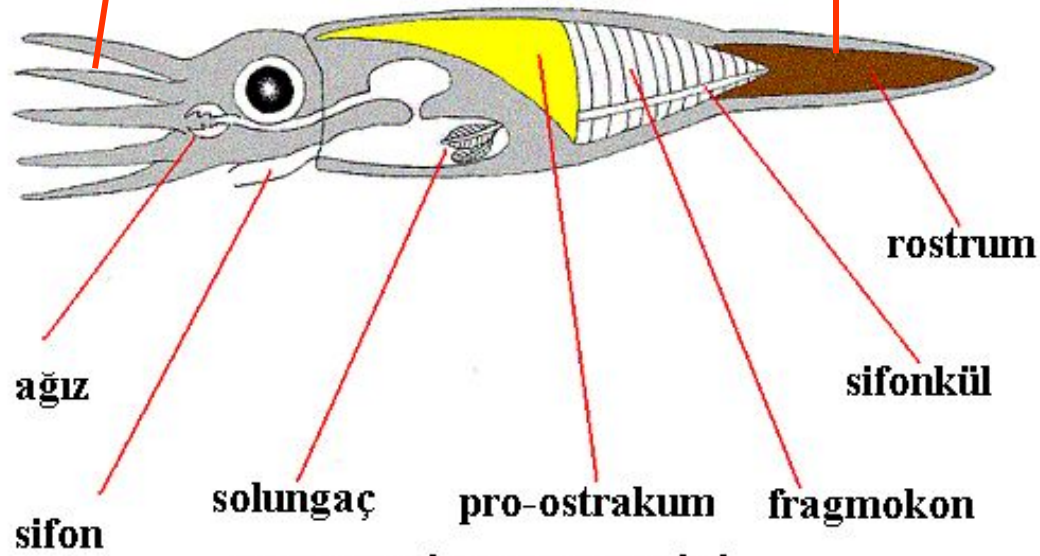
Üst Karbonifer- Kretase , yerel olarak Eosen

Cins ***Ausseites***

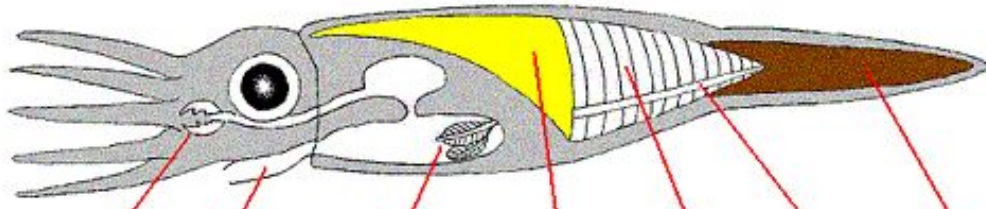
Cins *Belemnitella*

Cins *Aulacoceras*

Cins *Hibolites*



BELEMNİT ANATOMİSİ



ağız

sifon

solungaç

pro-ostrakum

fragmokon

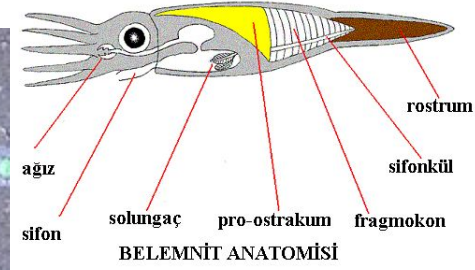
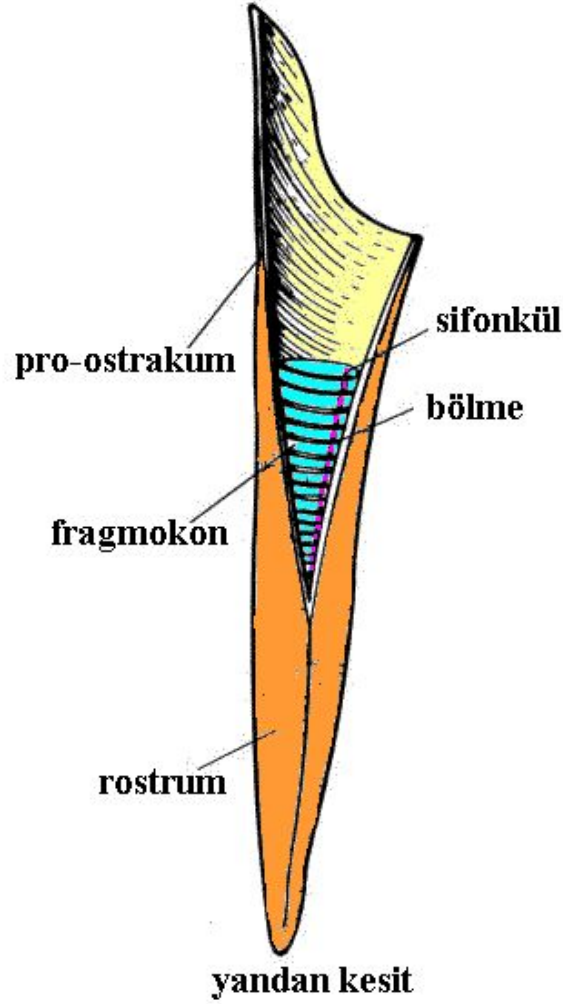
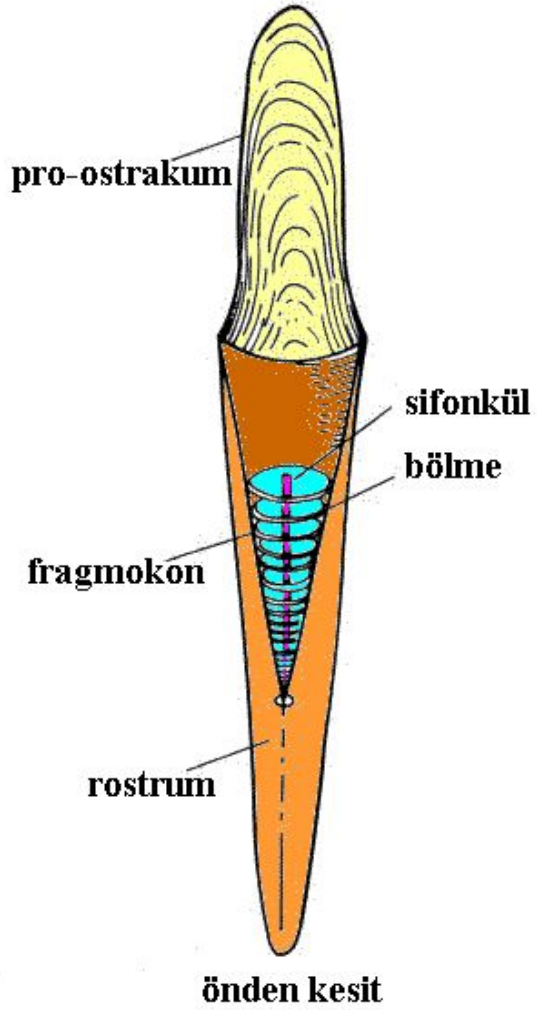
rostrum

sifonkül

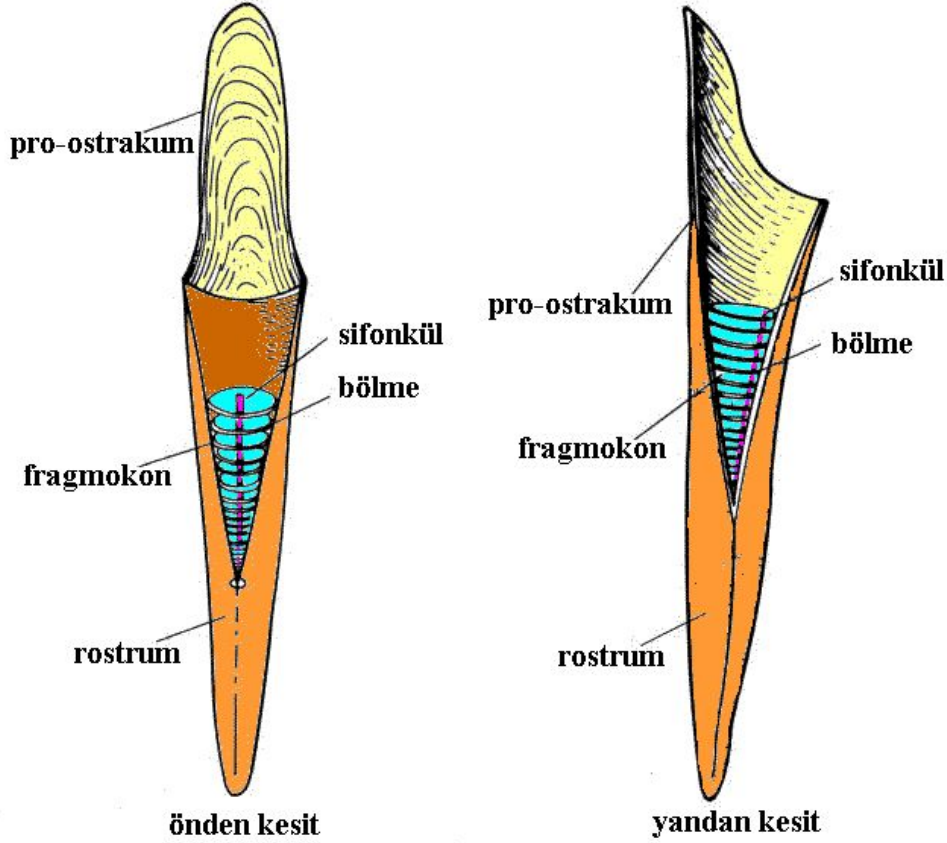
BELEMNİT ANATOMİSİ



ROSTRUM ve FRAGMOKON

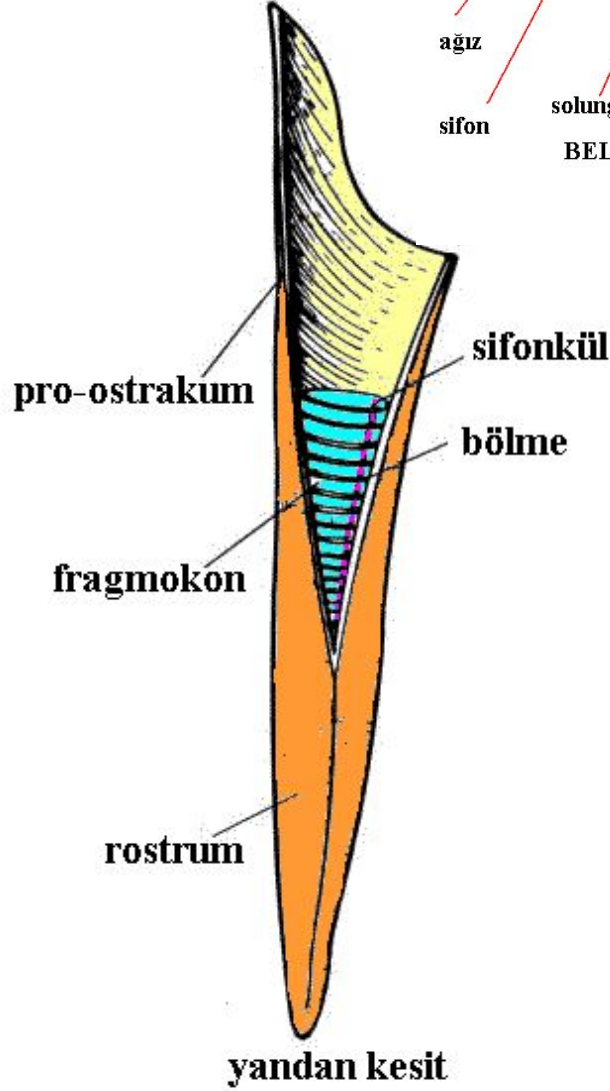
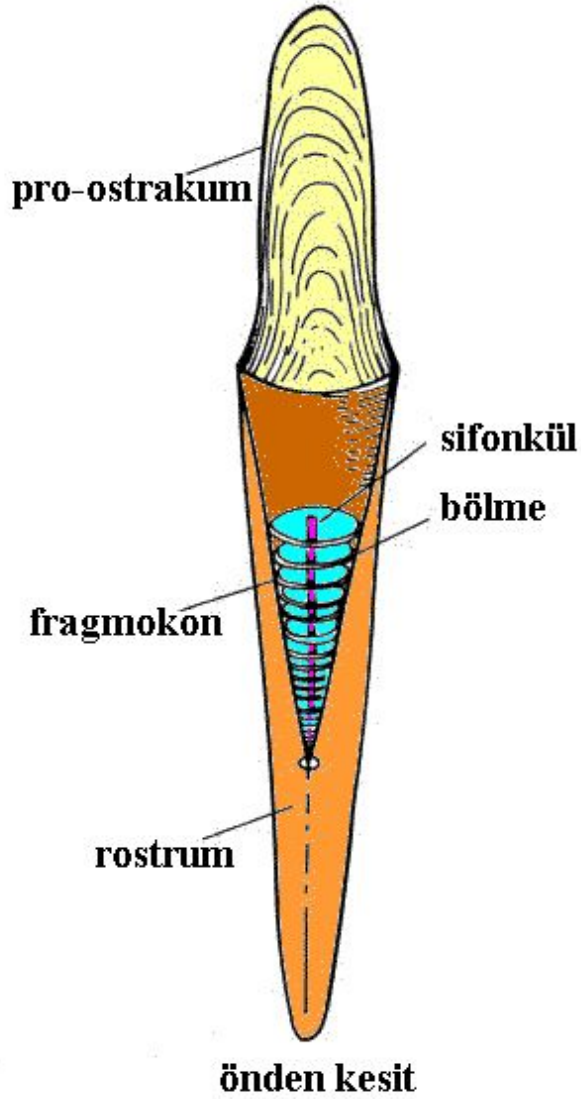
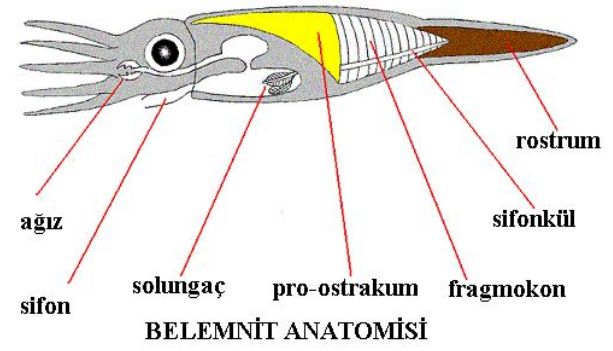


ROSTRUM ve FRAGMOKON



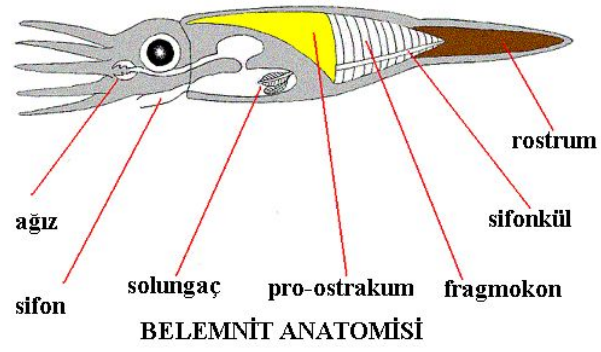
belemnit rostrumu - boyuna kesit

ROSTRUM ve FRAGMOKON



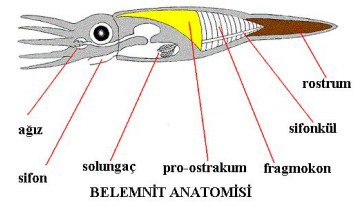
belemnit rostrumu
dış görünüm

BELEMNİT ROSTRUMU



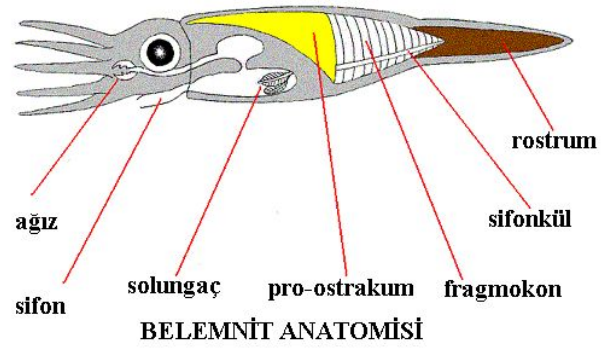
belemnite rostrumu - dış görünüm

BELEMNİT ROSTRUMU



belemnite rostrumu – Lab.Örneği

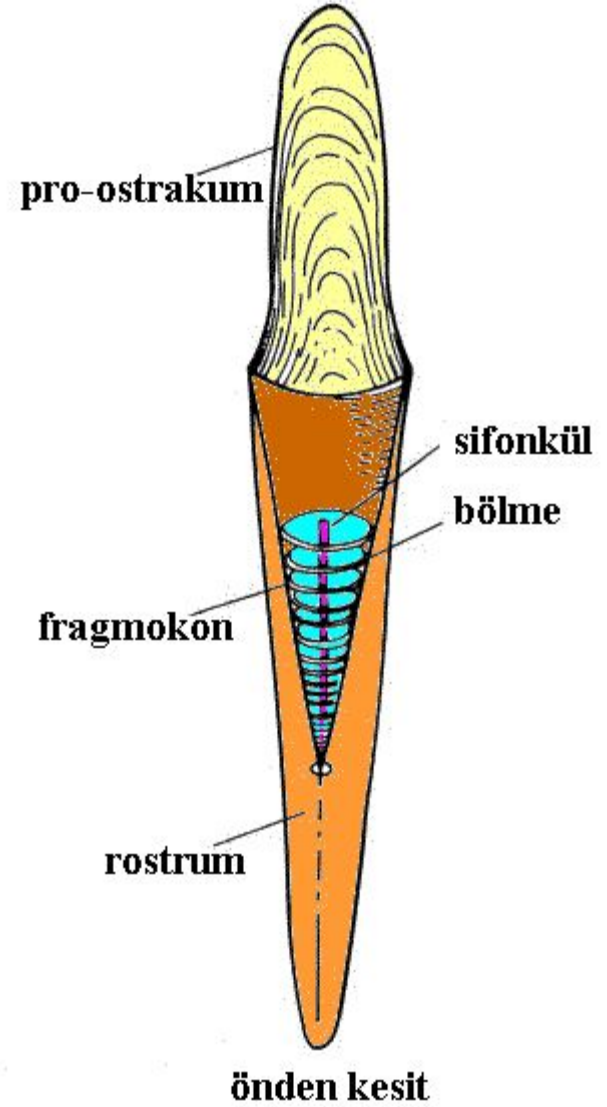
BELEMNİT ROSTRUMU



belemnite rostrumu - dış görünüm

Cins *Ausseites* Triyas – Alt Jura

Füsun
Alkaya



Lab.Örnekləri

Cins *Ausseites* Triyas – Alt Jura

