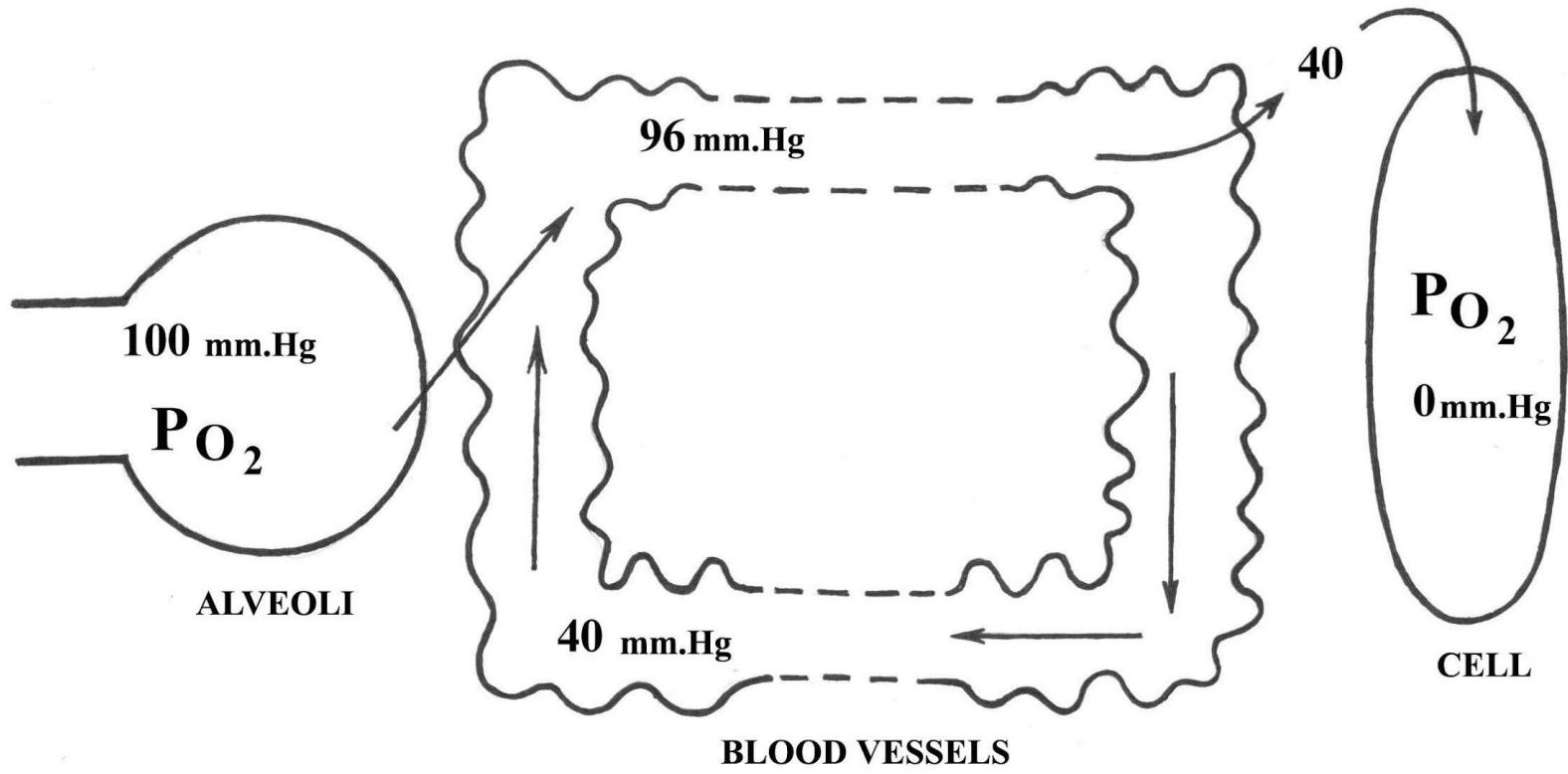
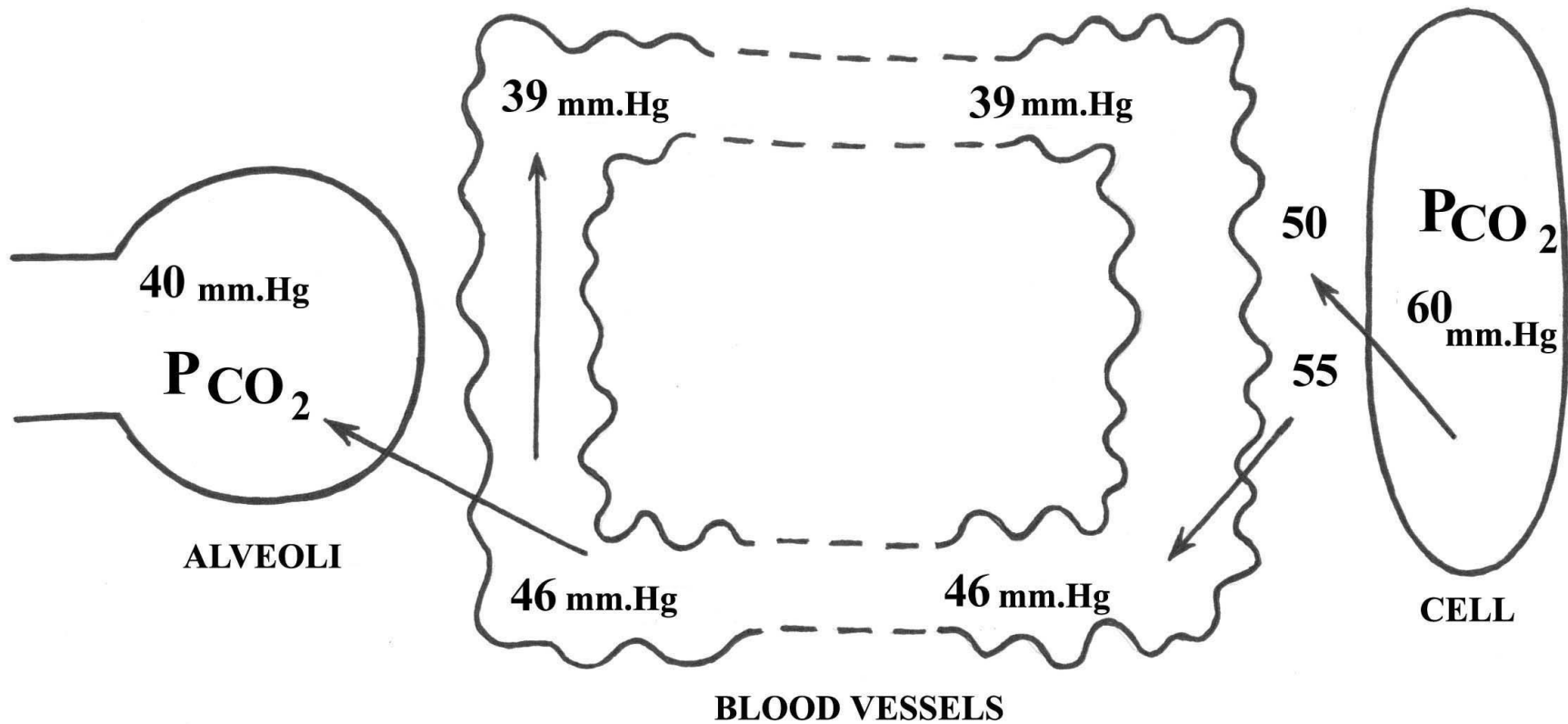


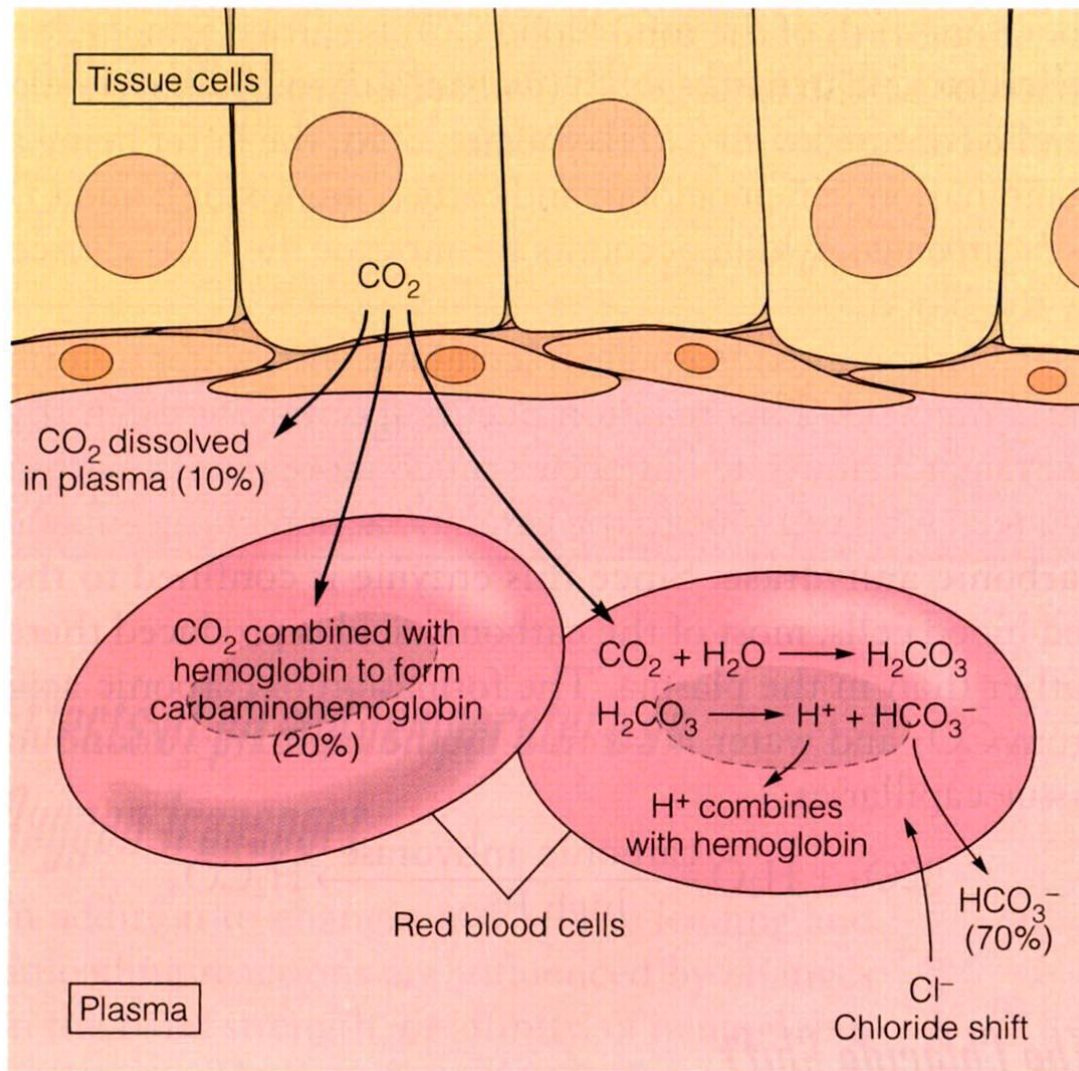
Transport of gases.  
Regulation of respiration



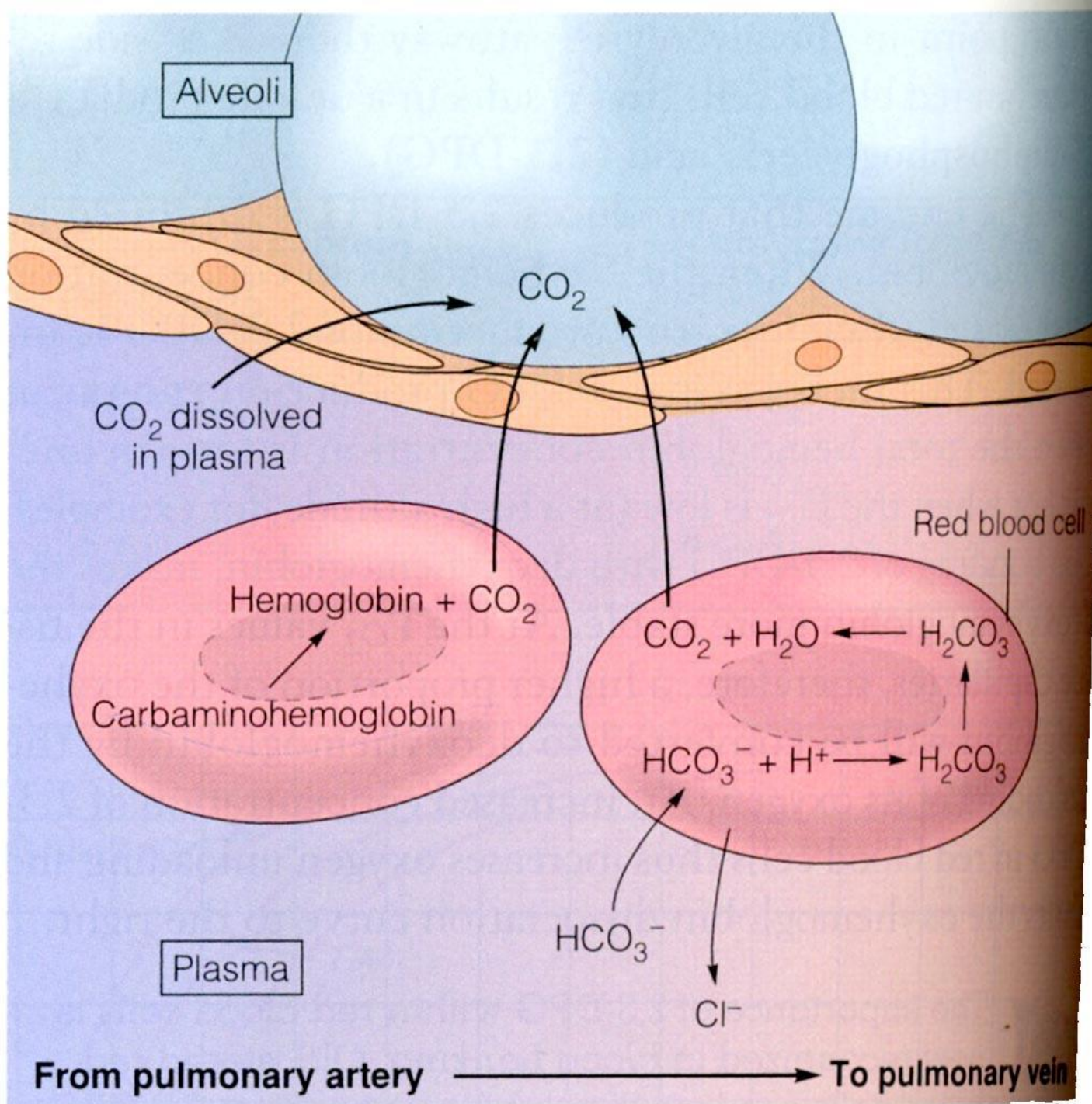
**OXYGEN TRANSPORT BY BLOOD**



**CARBON DIOXIDE TRANSPORT BY BLOOD**



An illustration of carbon dioxide transport by the blood and the "chloride shift." Carbon dioxide is transported in three forms: as dissolved  $\text{CO}_2$  gas, attached to hemoglobin as carbaminohemoglobin, and as carbonic acid and bicarbonate. Percentages indicate the proportion of  $\text{CO}_2$  in each of the forms.



# REGULATION OF RESPIRATION

