

Число и цифра 4

Выполнила :

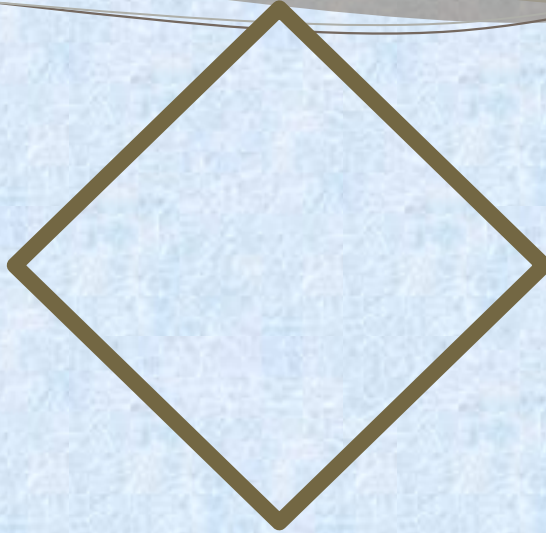
Учитель начальных классов

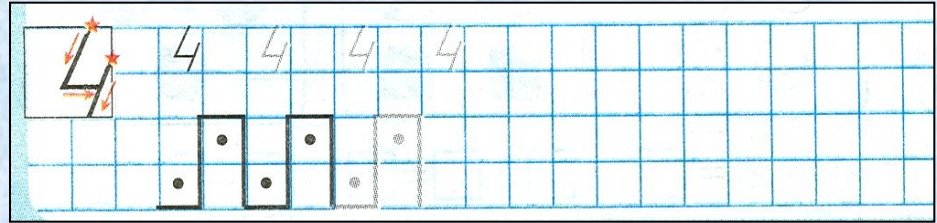
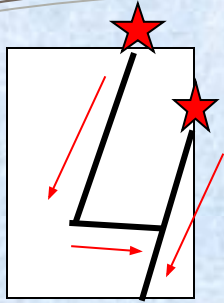
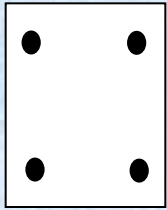
МБОУ СОШ №34

г. Ставрополя

Попова Елена Викторовна







$$4 - 3 = 1$$

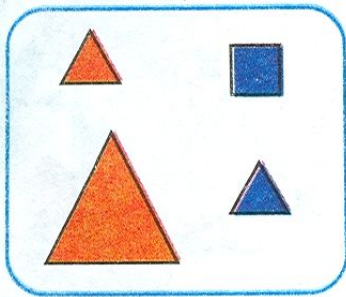
$$4 - 2 = 2$$

$$1 + 3 = 4$$

$$3 + 1 = 4$$

$$3 + \boxed{1} = 4 \quad 2 + \boxed{2} = 4 \quad \boxed{4} - 1 = 3$$

3 Разбей фигуры на части по форме:



$$\underline{\Gamma} + \underline{K} = \textcircled{\Phi}$$

$$3 + 1 = \boxed{4}$$

$$\underline{K} + \underline{\Gamma} = \textcircled{\Phi}$$

$$1 + 3 = \boxed{4}$$

$$\textcircled{\Phi} - \underline{\Gamma} = \underline{K}$$

$$4 - 3 = \boxed{1}$$

$$\textcircled{\Phi} - \underline{K} = \underline{\Gamma}$$

$$4 - \boxed{1} = \boxed{3}$$

На какие ещё части можно разбить эти фигуры?

$$\underline{K} + \underline{C} = \textcircled{\Phi}$$

$$2 + 2 = 4$$

$$\underline{M} + \underline{B} = \textcircled{\Phi}$$

$$1 + 3 = 4$$

$$\underline{C} + \underline{K} = \textcircled{\Phi}$$

$$\underline{B} + \underline{M} = \textcircled{\Phi}$$

$$3 + 1 = 4$$

$$\textcircled{\Phi} - \underline{K} = \underline{C}$$

$$4 - 2 = 2$$

$$\textcircled{\Phi} - \underline{M} = \underline{B}$$

$$4 - 1 = 3$$

$$\textcircled{\Phi} - \underline{C} = \underline{K}$$

$$\textcircled{\Phi} - \underline{B} = \underline{M}$$

$$4 - 3 = 1$$