

WHO IS IT?

Lemeseva Viktoriya Mihailovna
English teacher

Данная презентация составлена для учеников 2
класса для изучения описания животных



IT IS A BEAR
IT IS BIG AND FAT



IT IS A HORSE
IT IS BLACK
IT IS BIG



IT IS RHINO
IT IS GREY
IT IS BIG AND FAT

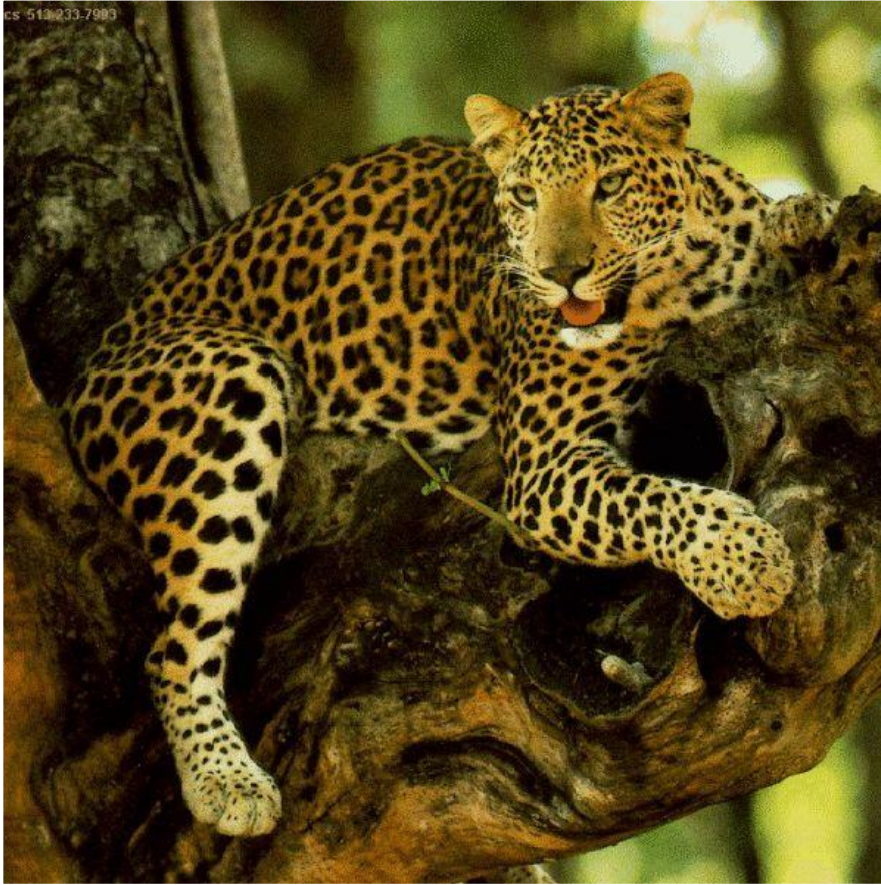


IT IS A DOG
IT IS BLACK AND
WHITE

It is a cat
It is grey
It is small



**IT IS A BIRD
IT IS BLUE
IT IS BEAUTIFUL**



IT IS A LEOPARD
IT IS BROWN AND
BLACK

cs 513-233-7993



IT IS A WOLF
IT IS GREY AND
SMALL

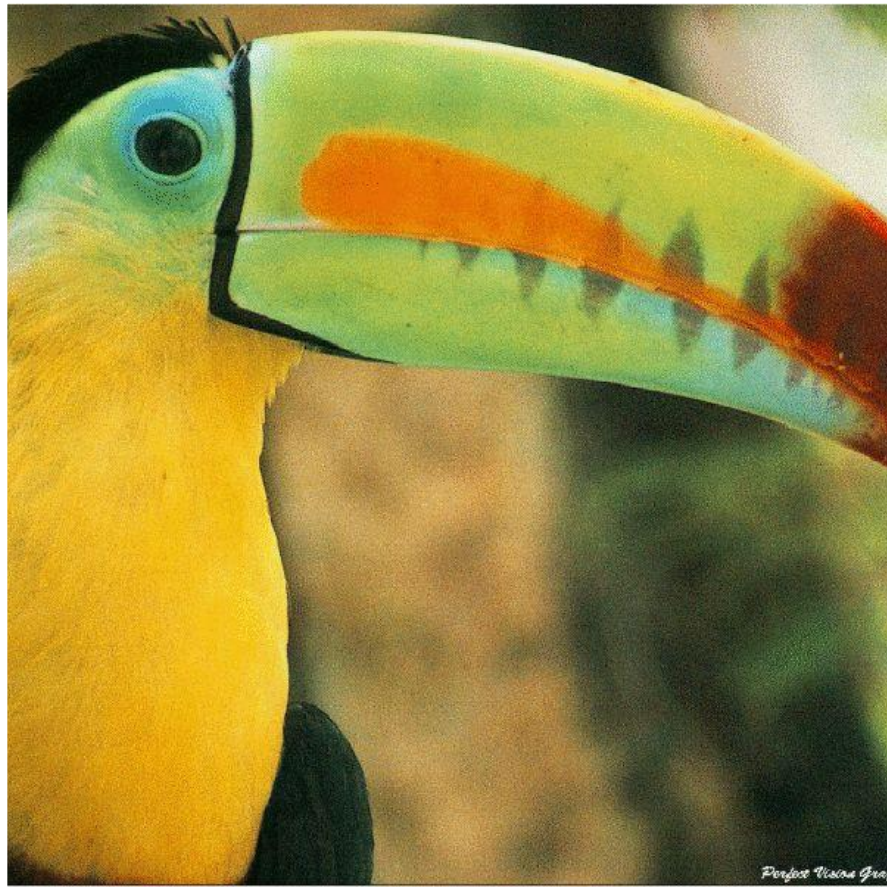
ics 513.233.7993



**THERE ARE TWO
BEARS
THEY ARE WHITE**



IT IS AN ELEPHANT
IT IS GREY AND
BIG



IT IS A BIRD
IT IS BIG
IT IS
MANYCOLORED



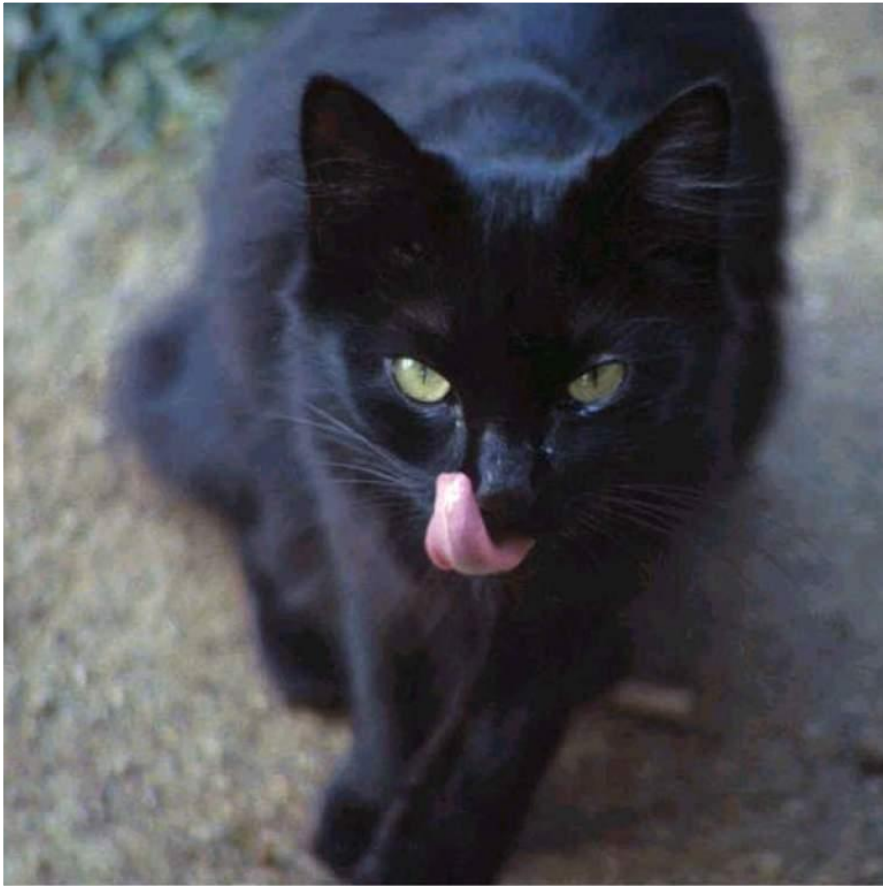
**IT IS A TIGER
IT IS BIG
IT IS BROWN WITH
BLACK STRIPES**



IT IS A PARROT
IT IS NOT BIG
IT IS GREEN,
YELLOW AND RED



IT IS A PANDA
IT IS BIG AND FAT
IT IS BLACK AND
WHITE



IT IS A CAT
IT IS BLACK
IT IS THIN AND
SMALL



IT IS A DOG
IT IS SMALL AND FAT
IT IS WHITE, BROWN
AND BLACK



IT IS A CROCODILE
IT IS STRONG
IT IS GREEN



IT IS A MOUSE
IT IS WHITE AND
SMALL



**IT IS A FISH
IT IS ORANGE AND
SMALL**

8



IT IS A FROG
IT IS SMALL AND
GREEN