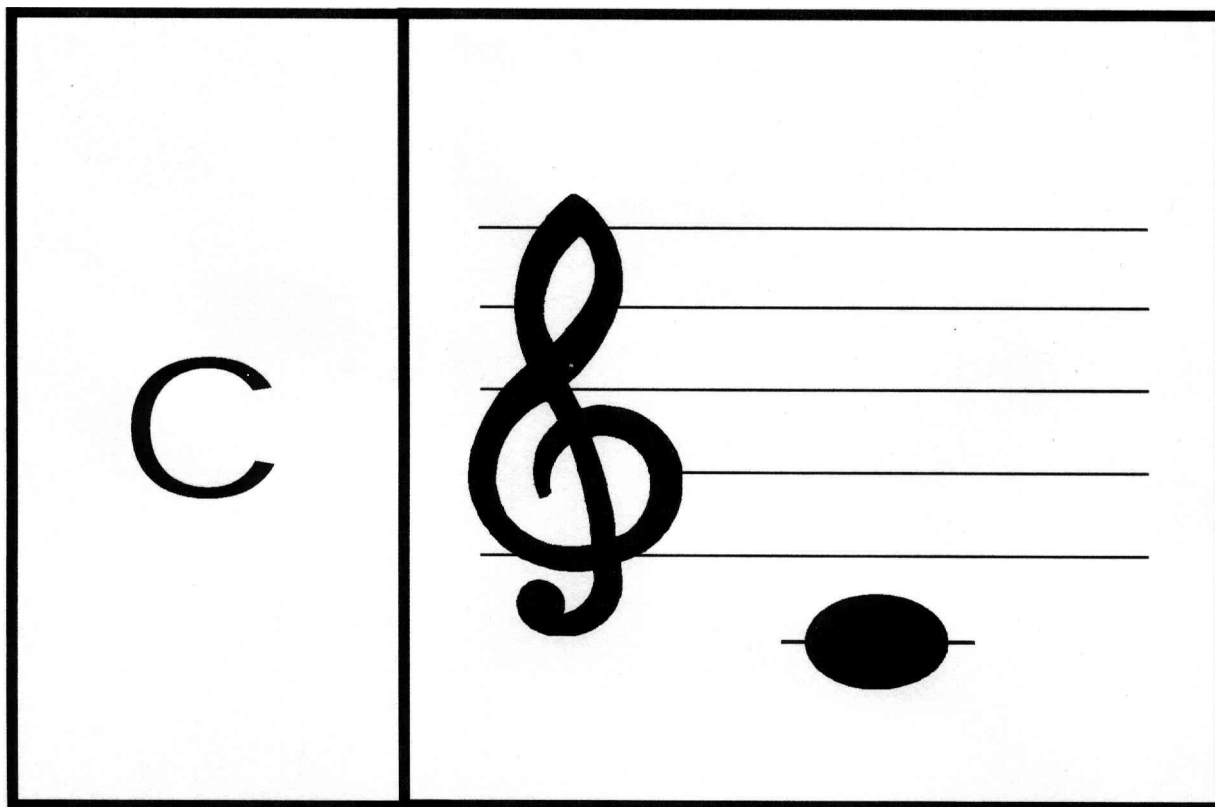
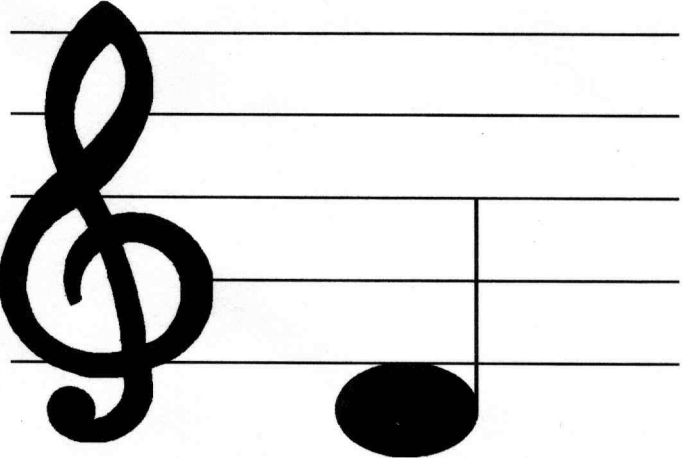


**музыкальные**

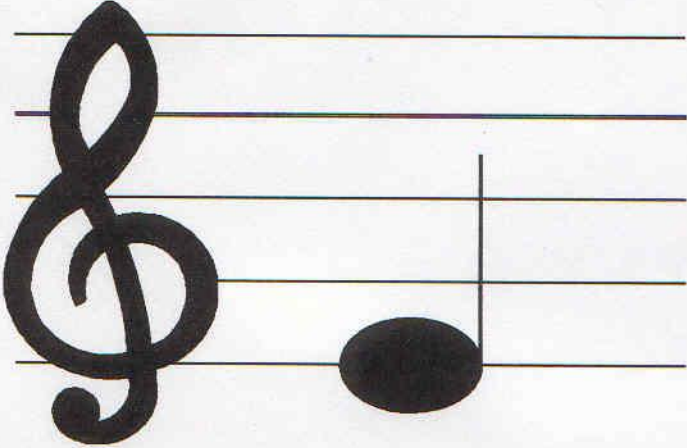
**НОТЫ**



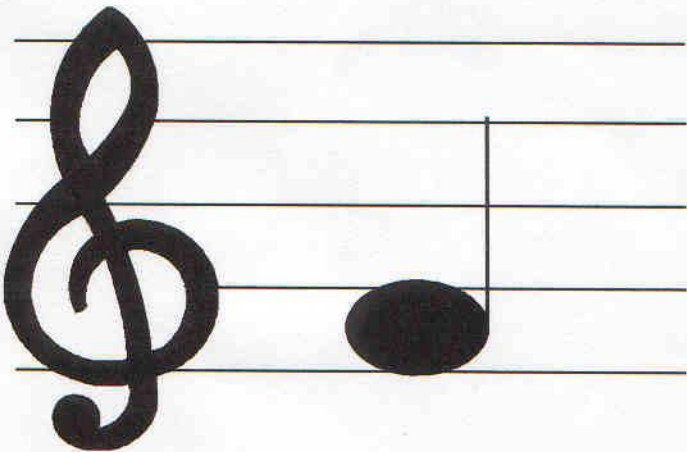
**ДО**

d	
---	--

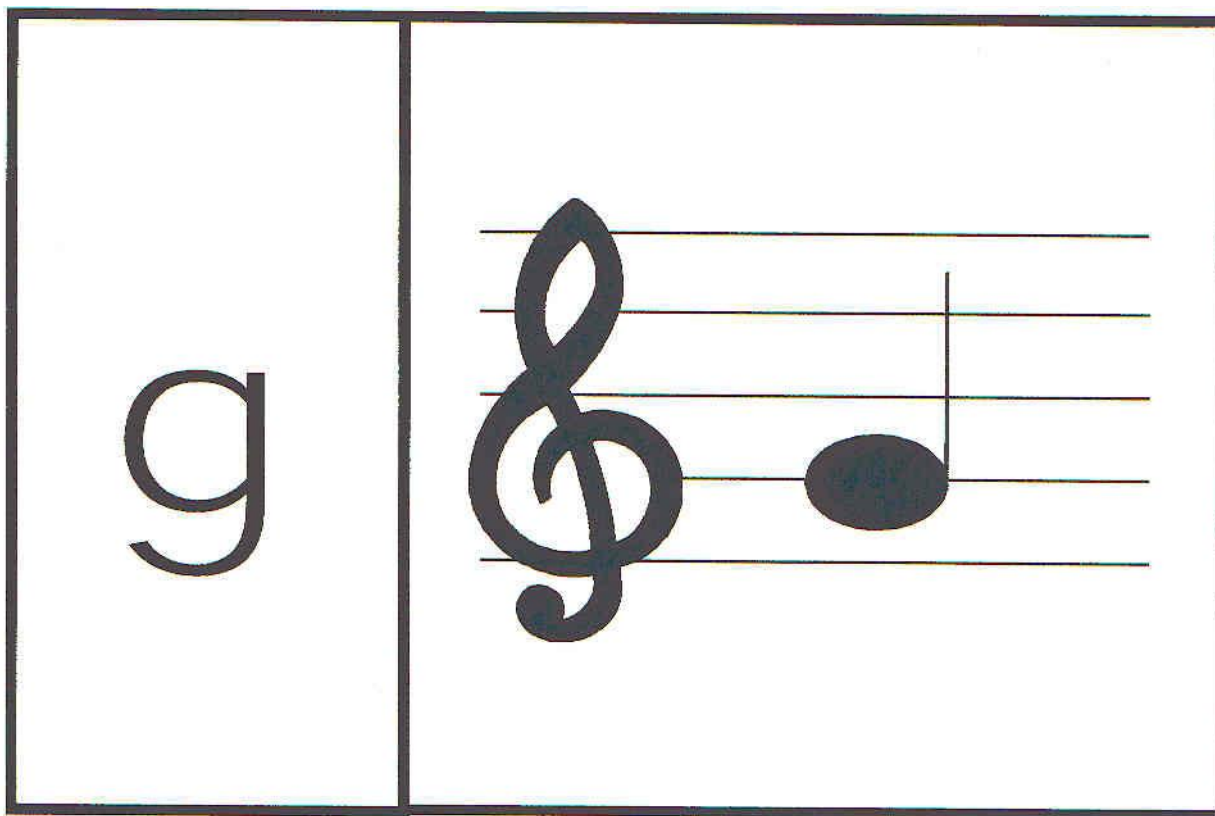
pe

e	 A musical staff with five horizontal lines. A treble clef is positioned on the left side. A single black note is placed on the second line from the bottom.
---	--

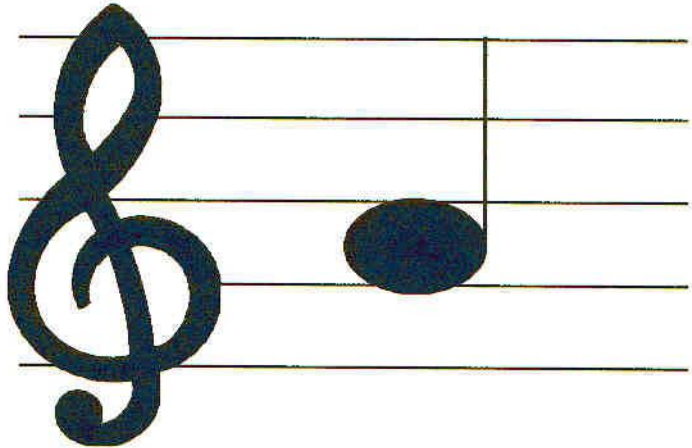
**МИ**

f	 A musical staff with five horizontal lines. On the left side, there is a treble clef. On the right side, there is a single note with a solid black oval head and a vertical stem, positioned on the second line from the bottom.
---	---

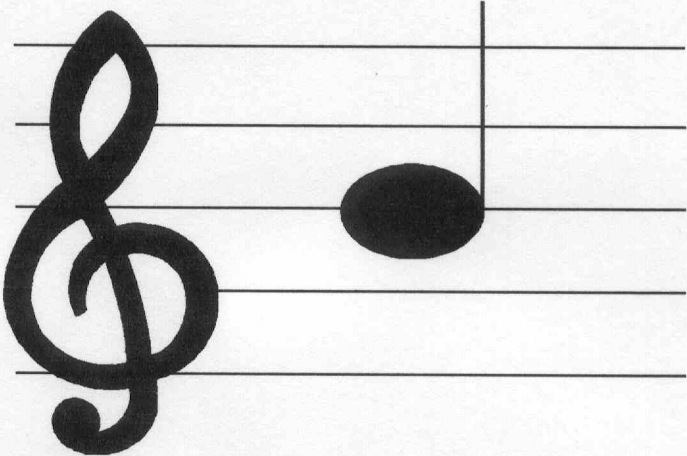
**фа**



**СОЛЬ**

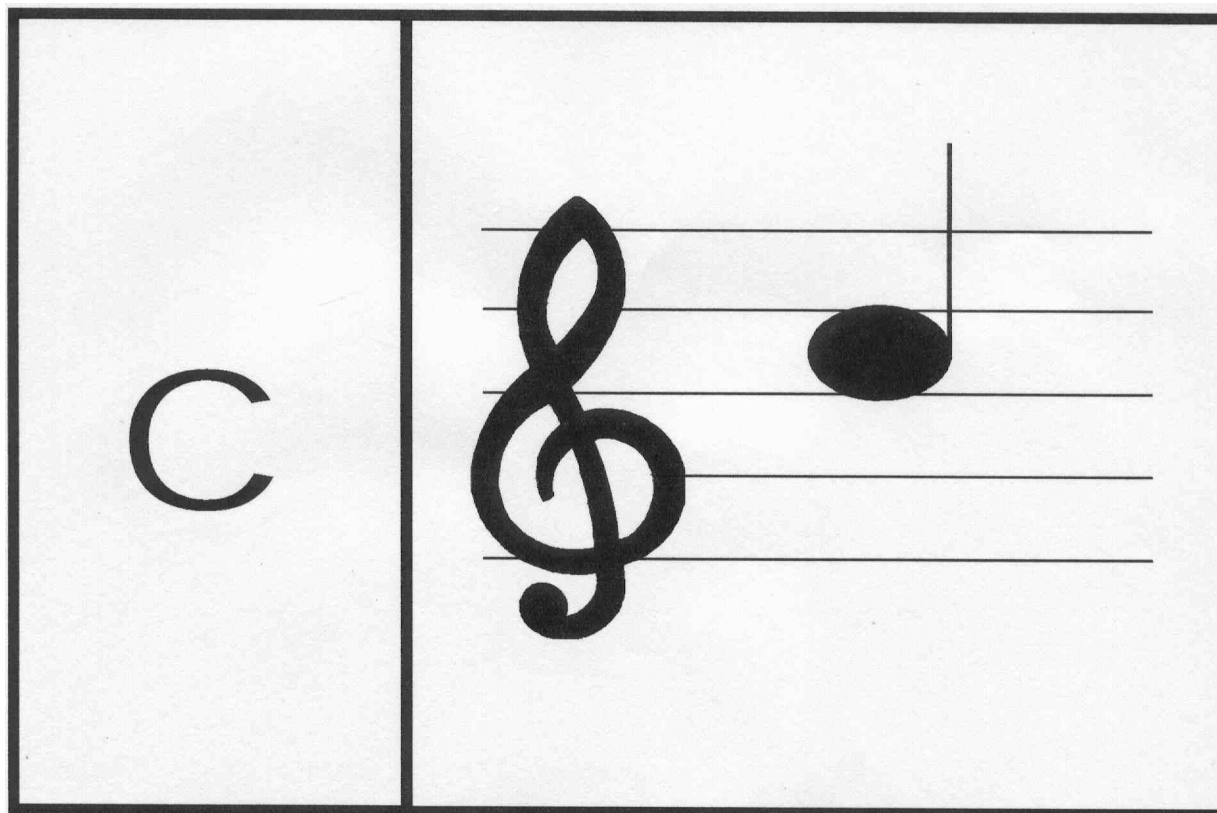
а	 A musical staff with five horizontal lines. A treble clef is positioned on the left side. A single solid black note is placed on the second line from the bottom.
---	--

**ля**

<p>b</p>	 <p>A musical staff with five horizontal lines and a treble clef on the left. A single black note is positioned on the second line from the bottom.</p>
----------	---

**СИ**





**ДО**